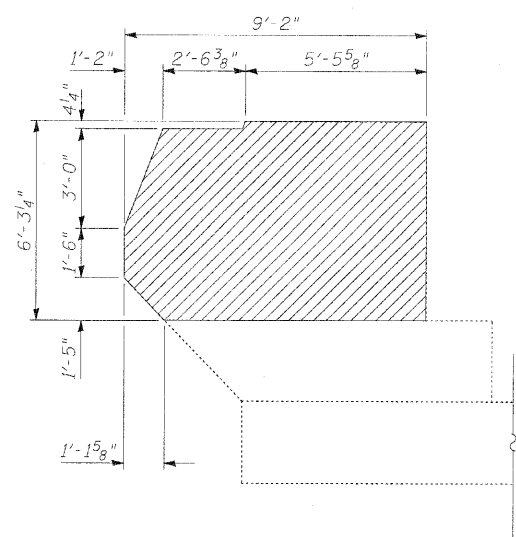
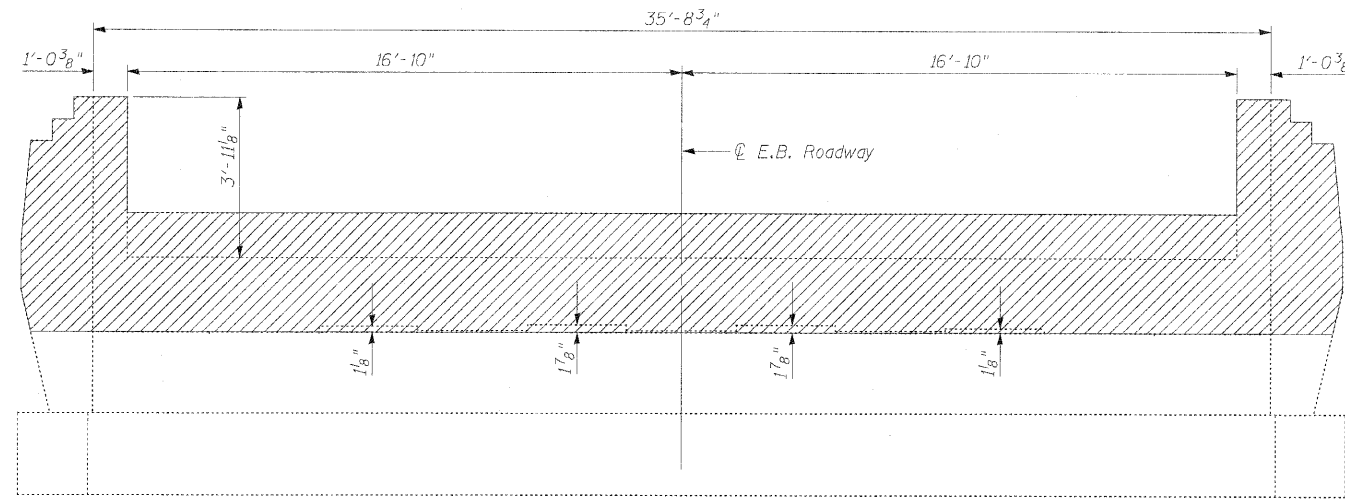


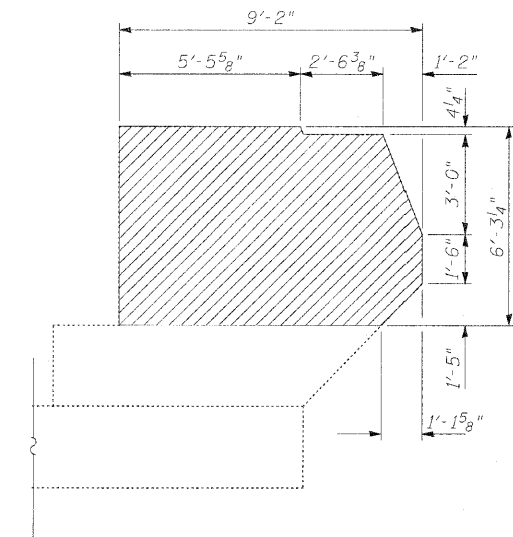
STATE OF ILLINOIS
DEPARTMENT OF TRANSPORTATION



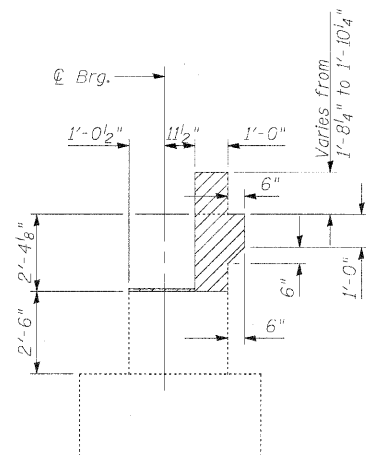
NORTH WINGWALL ELEVATION



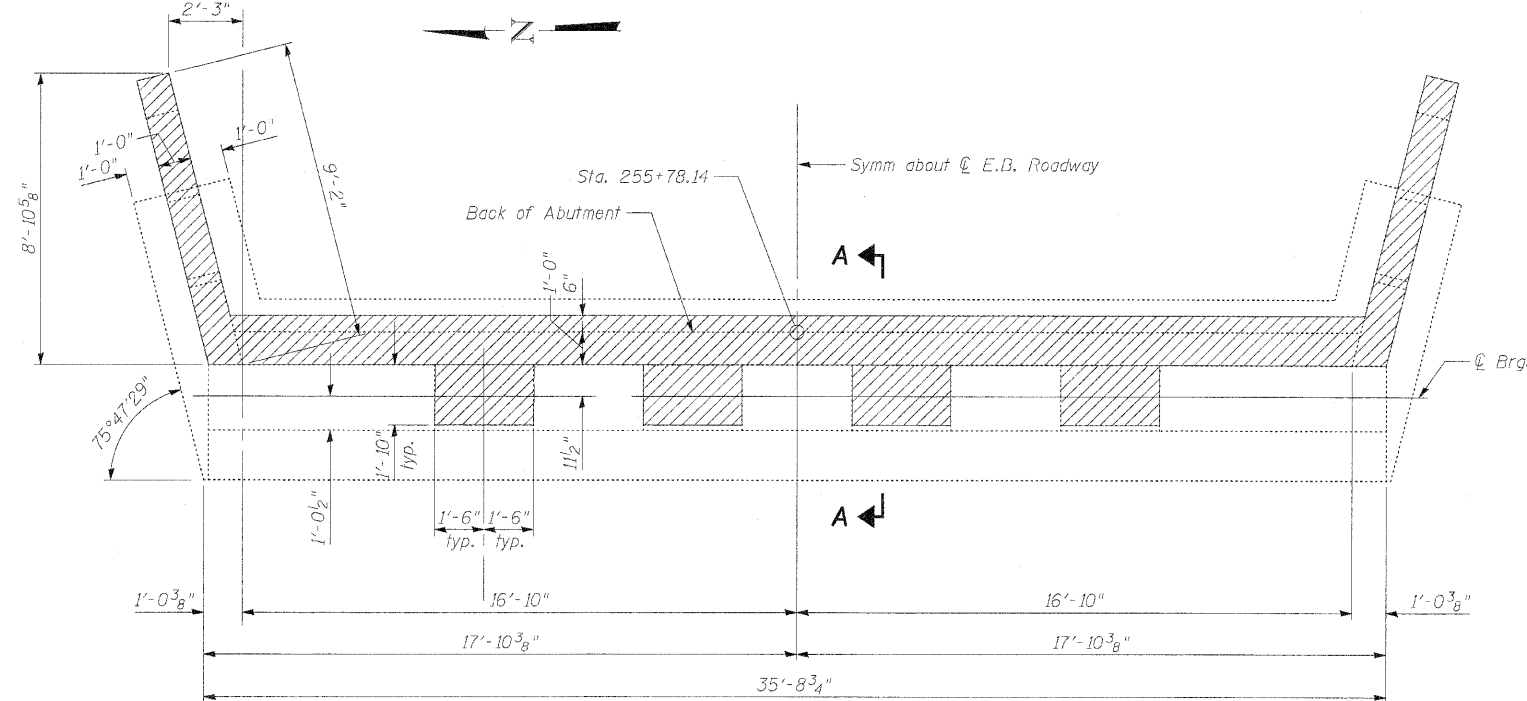
ELEVATION
(Looking East)



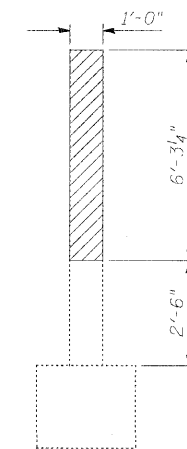
SOUTH WINGWALL ELEVATION



SECTION A-A



PLAN



SECTION THRU WINGWALL

BILL OF MATERIAL

Item	Unit	Total
Concrete Removal	Cu. Yd.	9.9

Note:
Existing reinforcement bars that project from the abutment after concrete removal shall be cut flush with the concrete left in place. Cost included with Concrete Removal.

DESIGNED	SST
CHECKED	SPK
DRAWN	ASJ
CHECKED	SPK

Concrete Removal



INFRASTRUCTURE ENGINEERING | INCORPORATED
 33 West Monroe | Suite 1540 | Chicago, IL 60603
 P 312.425.9560 | F 312.425.9564 | www.infrastructure-eng.com

SHEET NO. 33 54 SHEETS	F.A.I. RTE. 280	SECTION 81-1(HB-2)R	COUNTY ROCK ISLAND	TOTAL SHEETS 503	SHEET NO. 315
	CONTRACT NO. 64815				
FED. ROAD DIST. NO. _ ILLINOIS FED. AID PROJECT					

**E.B. ROADWAY EAST ABUTMENT CONCRETE REMOVAL
STRUCTURE NO. 081-0022 (E.B.)
STRUCTURE NO. 081-0023 (W.B.)**