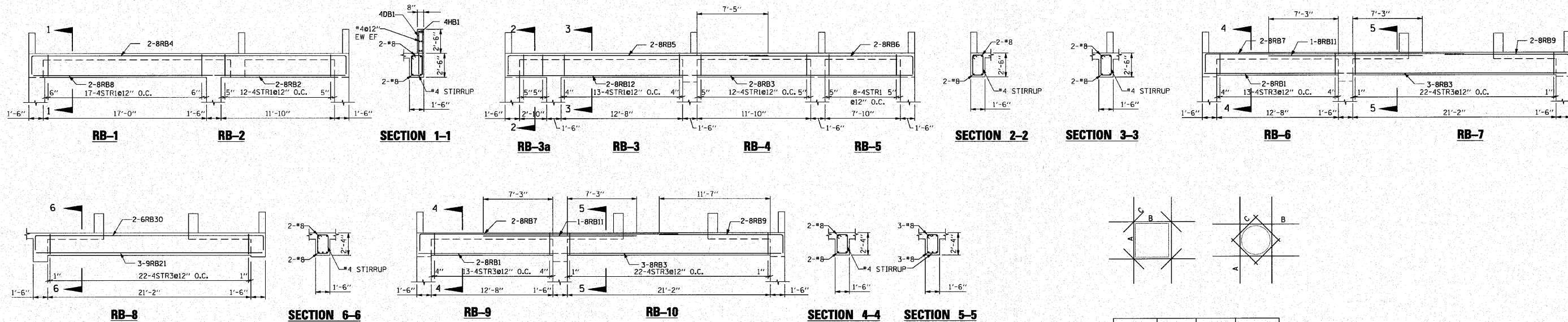


F.A.I. RTE.	SECTION	COUNTY	TOTAL SHEETS	SHEET NO.
190	0102.1 S	COOK	107	26
FED. ROAD DIST. NO.		ILLINOIS	FED. AID PROJECT	



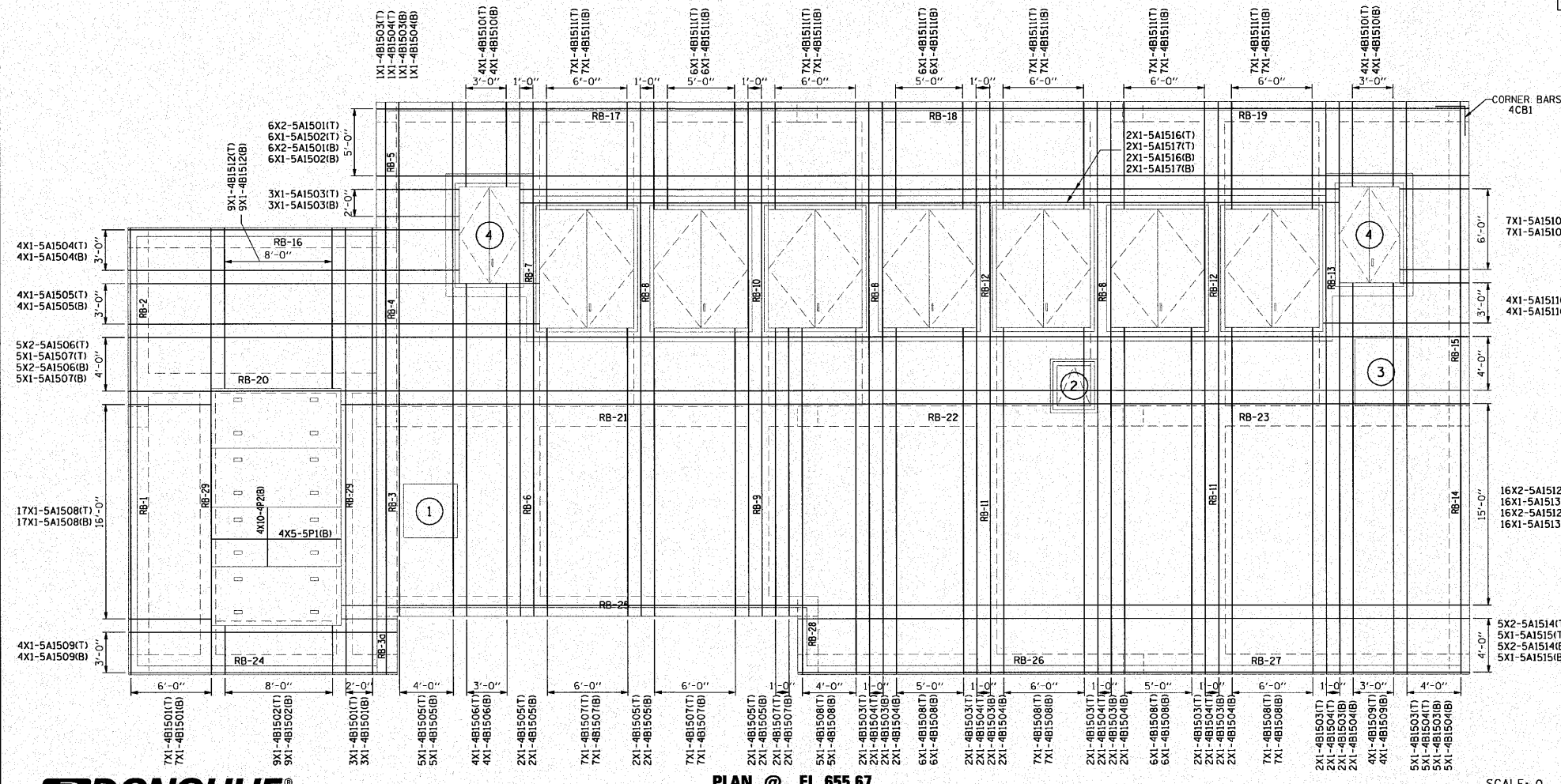
OPENING	A	B	C
1	12'-8"	12'-8"	3'-0"
2	10'-8"	9'-8"	3'-0"
3	14'-8"	12'-8"	3'-0"
4	19'-0"	13'-8"	3'-0"

BAR 1A = OPENING 1, BAR A

**ROOF OPENINGS**

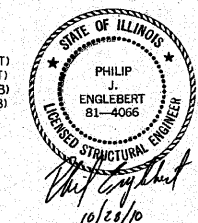
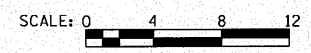
**BILL OF MATERIALS**

BAR NO.	SIZE	LENGTH	SHAPE	BAR NO.	SIZE	LENGTH	SHAPE
BRB1	4	8	14'-8"	4A1501	24	4	30'-0"
BRB2	2	8	12'-10"	4A1502	12	4	24'-6"
BRB3	17	8	23'-2"	4A1503	6	4	5'-10"
BRB4	2	8	25'-6"	4A1504	8	4	24'-4"
BRB5	2	8	29'-0"	4A1505	8	4	30'-4"
BRB6	2	8	12'-0"	4A1506	20	4	40'-0"
BRB7	4	8	29'-3"	4A1507	10	4	23'-0"
BRB8	11	8	19'-0"	4A1508	34	4	5'-10"
BRB9	10	8	15'-0"	4A1509	8	4	19'-10"
BRB10	4	8	35'-0"	4A1510	14	4	4'-10"
BRB11	13	8	11'-0"	4A1511	8	4	10'-8"
BRB12	2	8	18'-2"	4A1512	84	4	30'-0"
BRB13	13	8	23'-5"	4A1513	20	4	27'-2"
BRB15	7	8	32'-6"	4B1501	32	4	33'-0"
BRB16	4	8	24'-1"	4B1502	18	4	3'-4"
BRB17	9	8	24'-9"	4B1503	32	4	30'-0"
BRB18	11	8	19'-8"	4B1504	32	4	10'-7"
BRB19	6	8	24'-10"	4B1505	22	4	38'-0"
BRB20	6	8	24'-10"	4B1506	8	4	24'-6"
BRB21	12	9	23'-10"	4B1507	32	4	21'-6"
BRB22	6	8	22'-2"	4B1508	62	4	25'-6"
BRB23	2	8	5'-6"	4B1509	8	4	28'-10"
BRB24	4	8	19'-6"	4B1510	16	4	6'-0"
BRB25	4	8	29'-10"	4B1511	94	4	7'-8"
BRB26	4	8	26'-3"	4B1512	18	4	11'-8"
BRB27	6	8	16'-0"	4CB1	60	4	4'-10"
BRB28	2	8	40'-0"	4DB1	602	4	4'-8"
BRB29	7	6	24'-0"	4HB1	20	4	40'-0"
BRB30	6	6	27'-10"	5P1	20	5	9'-4"
BRB31	6	6	26'-6"	4P2	40	4	4'-2"
BRB32	2	6	9'-10"	1A	8	5	12'-8"
BRB33	4	8	17'-0"	1B	8	5	12'-8"
BRB34	3	8	18'-0"	1C	8	5	3'-0"
BRB35	5	9	31'-10"	2A	8	5	10'-8"
BRB36	2	6	36'-10"	2B	8	5	9'-8"
4STR1	288	4	7'-6"	2C	8	5	3'-0"
4STR2	55	4	6'-4"	3A	8	5	14'-8"
4STR3	236	4	7'-2"	3B	8	5	12'-8"
4STR5	66	4	8'-6"	3C	8	5	3'-0"
				4A	16	5	19'-0"
				4B	16	5	12'-8"
				4C	16	5	3'-0"
REINFORCEMENT BARS EPOXY COATED				POUNDS	30,500		
CONCRETE STRUCTURES				CU YD	210		



**PLAN @ EL. 655.67**

- NOTES:  
 1. ALL SPLICES LOCATIONS SHALL BE STAGGERED.  
 2. ALL REINFORCING BARS SHALL BE PRE-CUT AT SHOP AT OPENING LOCATIONS.



S15

REVISIONS	
NAME	DATE

ILLINOIS DEPARTMENT OF TRANSPORTATION  
**PUMP STATION NO. 24  
 RELOCATION**  
**REINFORCEMENT DETAILS  
 ROOF SLAB @ EL. 655.67**  
 SCALE: AS SHOWN      DRAWN BY: FL  
 DATE: 11-22-10      CHECKED BY: PJE

