

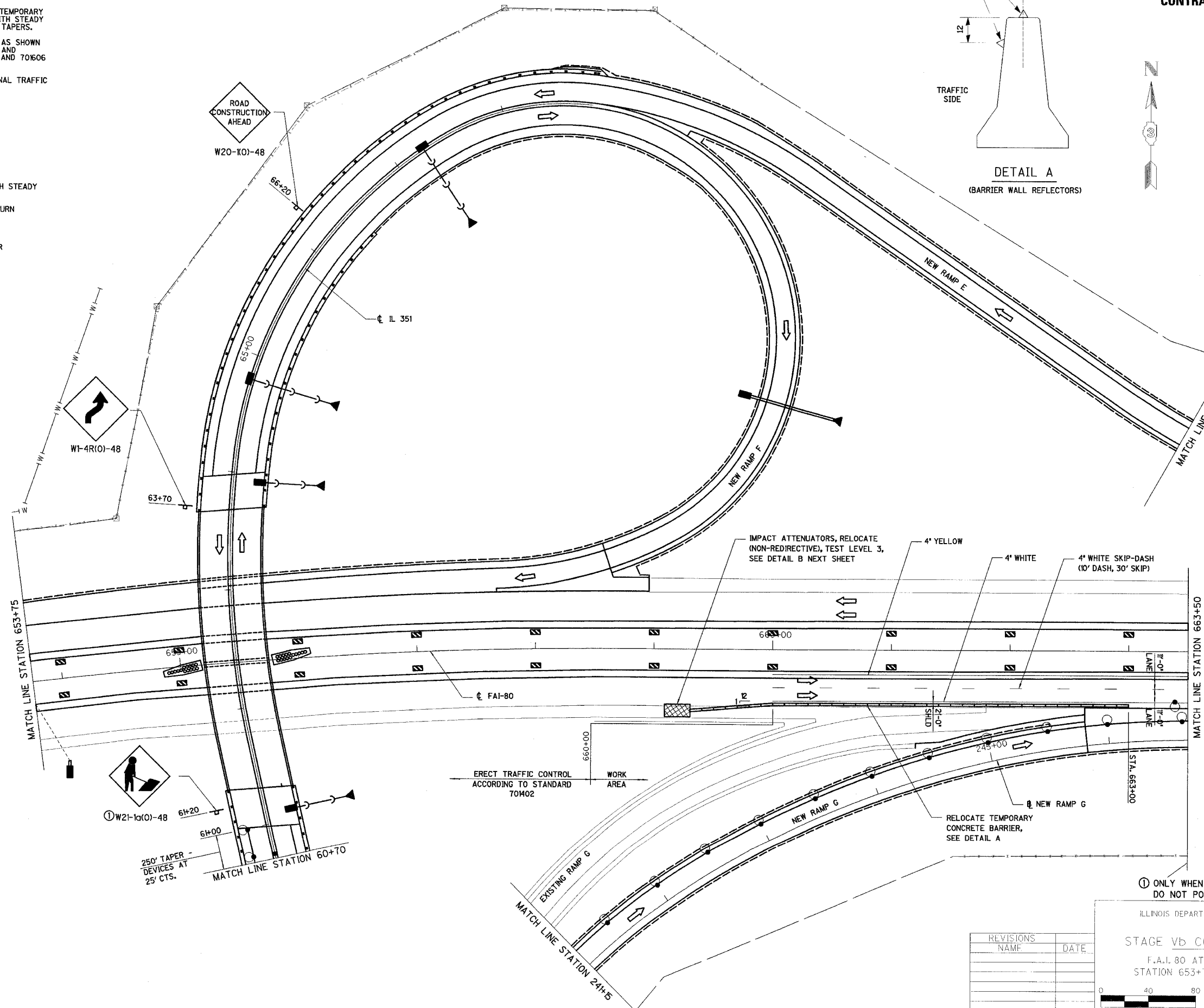
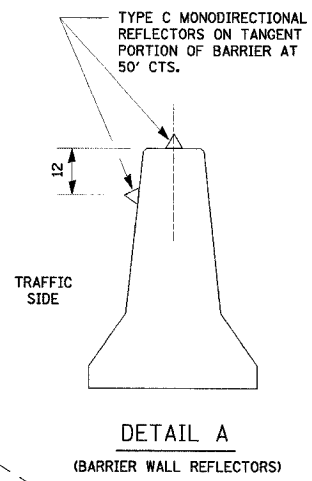
RTE.	SECTION	COUNTY	TOTAL SHEETS	SHEET NO.
FAI 80	(50-2)HBR	LA SALLE	46	82
STA. 653+75		TO STA. 663+50		
FED. ROAD DIST. NO.		ILLINOIS	FED. AID PROJECT	

CONTRACT NO. 86603

STAGE Vb NOTES

- REFLECTORIZED TEMPORARY PAVEMENT MARKING TAPE SHALL BE PLACED THROUGHOUT TAPERS AND ALONG-SIDE THE WORK AREAS. THE EDGE LINE SHALL BE WHITE OR YELLOW AS SHOWN.
- MOUNT VERTICAL PANELS ON TOP OF TEMPORARY CONCRETE BARRIER AT 25' CENTERS WITH STEADY BURNING MONODIRECTIONAL LIGHTS ON TAPERS.
- TRAFFIC CONTROL SHALL BE ERECTED AS SHOWN AND ACCORDING TO TRAFFIC CONTROL AND PROTECTION STANDARDS 70402, 70411, AND 70406 AS APPLICABLE.
- SEE SPECIAL PROVISIONS FOR ADDITIONAL TRAFFIC CONTROL REQUIREMENTS.

- LEGEND
- ↑ ARROW BOARD
  - DIRECTION OF TRAFFIC
  - ⊥ SIGN
  - ▲ DIRECTION INDICATOR BARRICADE WITH STEADY BURN MONODIRECTIONAL LIGHT
  - DRUM OR BARRICADE WITH STEADY BURN MONODIRECTIONAL LIGHT
  - ▬ TEMPORARY CONCRETE BARRIER
  - △ TYPE C MONODIRECTIONAL REFLECTOR
  - ⚡ FLASHING LIGHT
  - FLEXIBLE DELINEATOR
  - ▨ TEMPORARY WIDENING
  - ⊥ TYPE III BARRICADE
  - ▩ IMPACT ATTENUATORS
  - ▭ VERTICAL PANEL



NOTE: ADVANCE WARNING SIGNS TO BE SAME AS STAGE Va

① ONLY WHEN WORKERS ARE PRESENT. DO NOT POST MOUNT.

REVISIONS NAME	DATE

ILLINOIS DEPARTMENT OF TRANSPORTATION

STAGE Vb CONSTRUCTION PLAN

F.A.I. 80 AT ILLINOIS ROUTE 351

STATION 653+75 TO STATION 663+50

SCALE IN FEET

DATE: 09/04

DRAWN BY: MES/DWH

CHECKED BY: MID