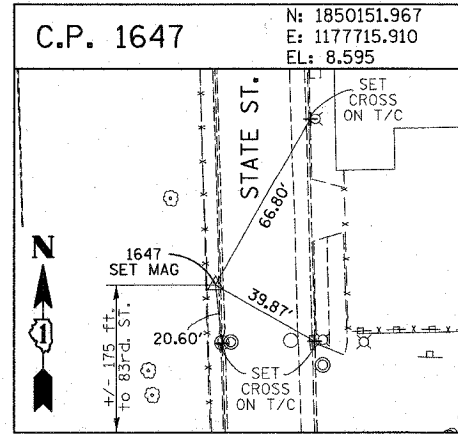
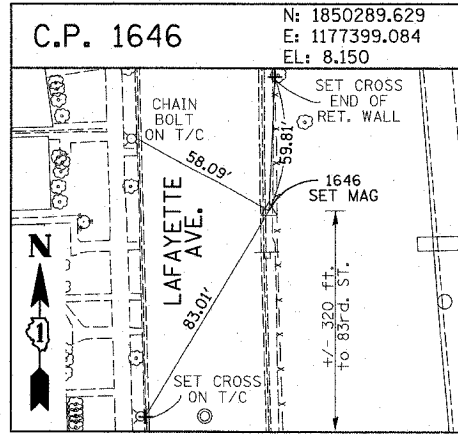
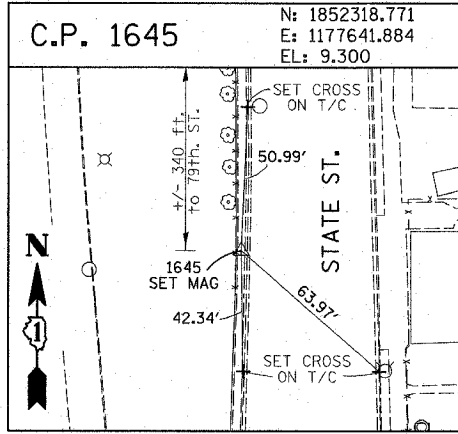
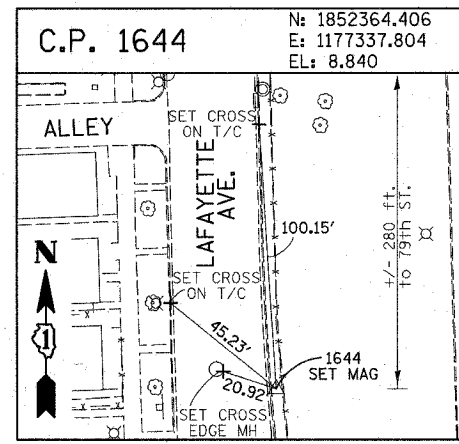
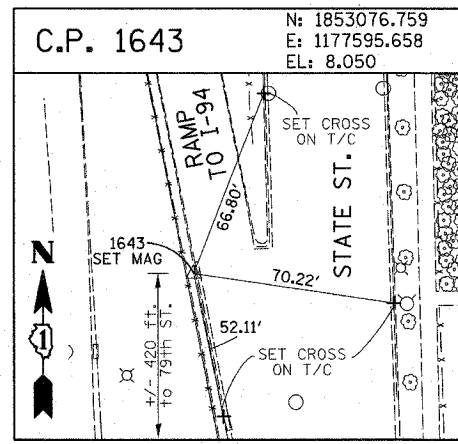
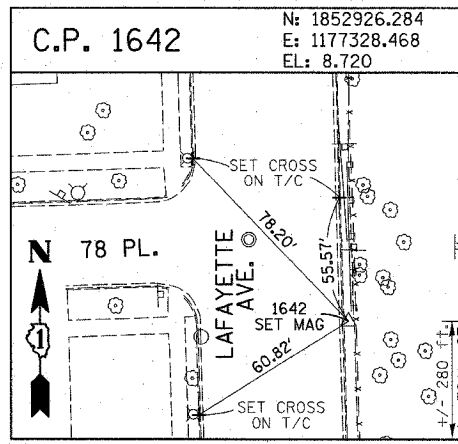
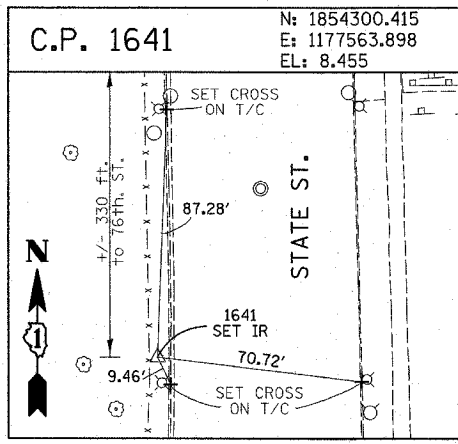
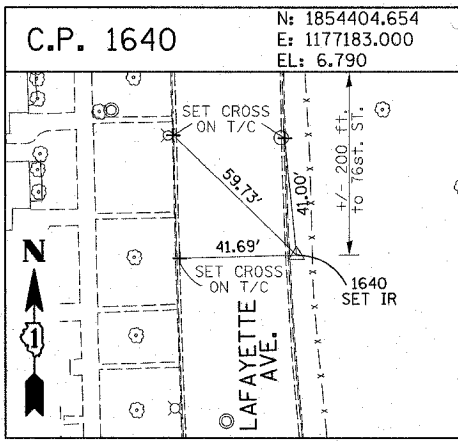
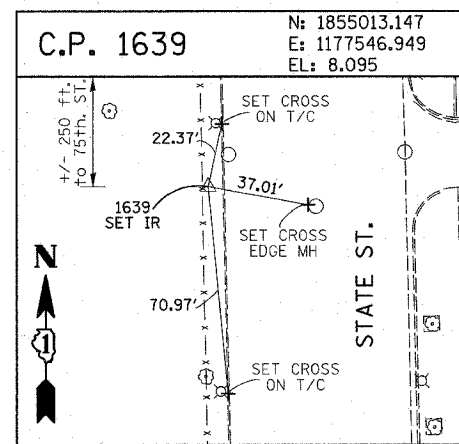
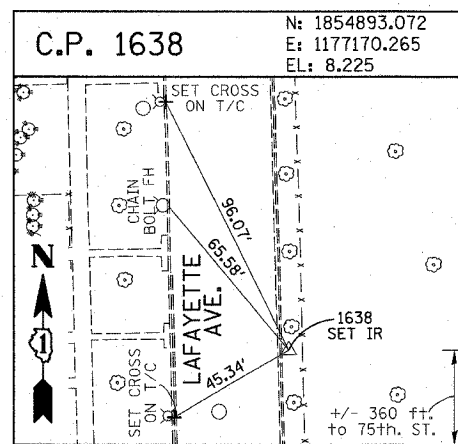
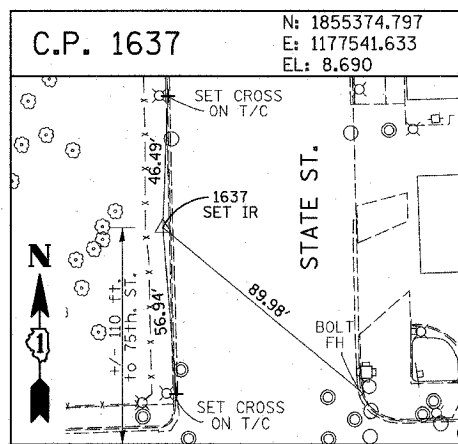
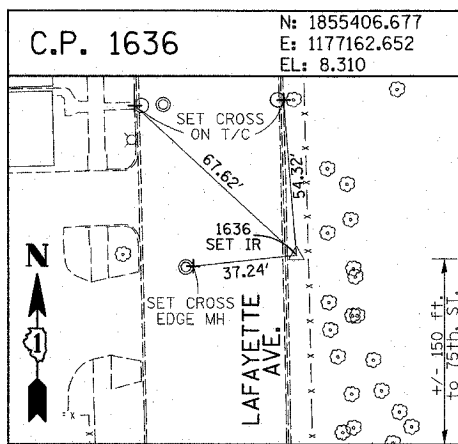
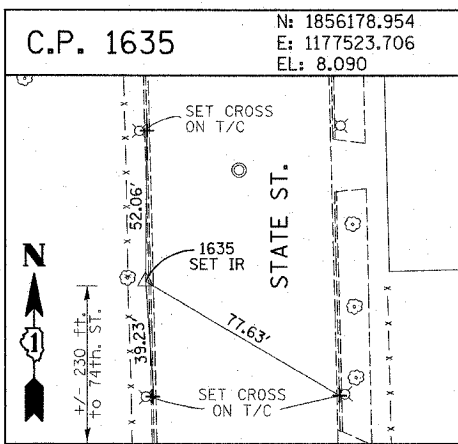
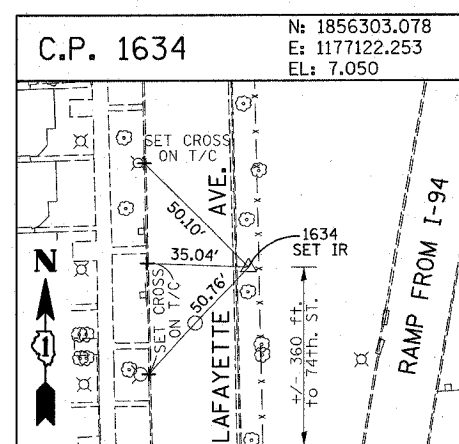
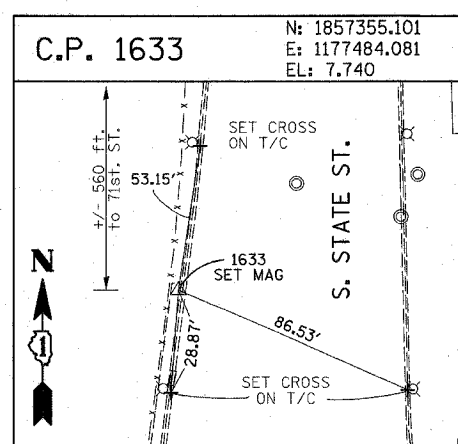
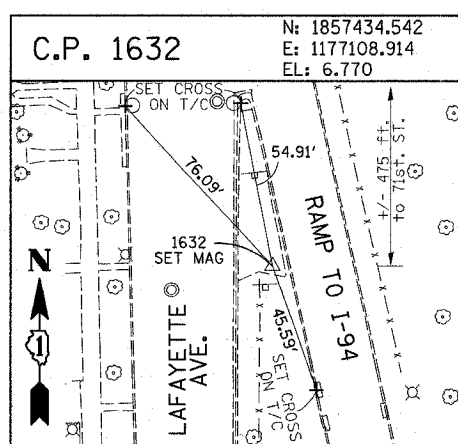
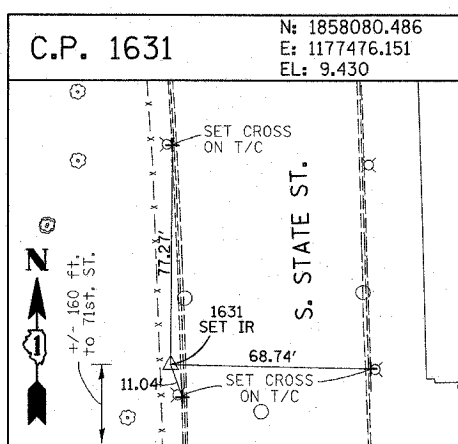
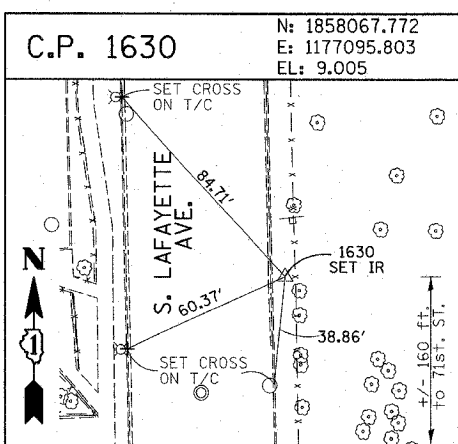


F.A.I. RTE.	SECTION	COUNTY	TOTAL SHEETS	SHEET NO.
90/94	2003-0311	COOK	976	16
STA.		TO STA.		
FED. ROAD DIST. NO.		ILLINOIS FED. AID PROJECT		
62583				



American Surveying Consultants, P.C.
1100 North Dearborn Street, Suite 200, Chicago, IL 60610
Tel: 312-467-1234 Fax: 312-467-1235

REVISIONS	
NAME	DATE

ILLINOIS DEPARTMENT OF TRANSPORTATION
F.A.I. 90/94 (DAN RYAN EXPRESSWAY)
31st STREET TO I-57

SURVEY TIES FOR CONTROL POINTS
SHEET 2 OF 4

SCALE: 1"=30'
DATE: OCTOBER 29, 2004
DRAWN BY: GSP
CHECKED BY: MMW

01/15/2004 09:54:00 PM