

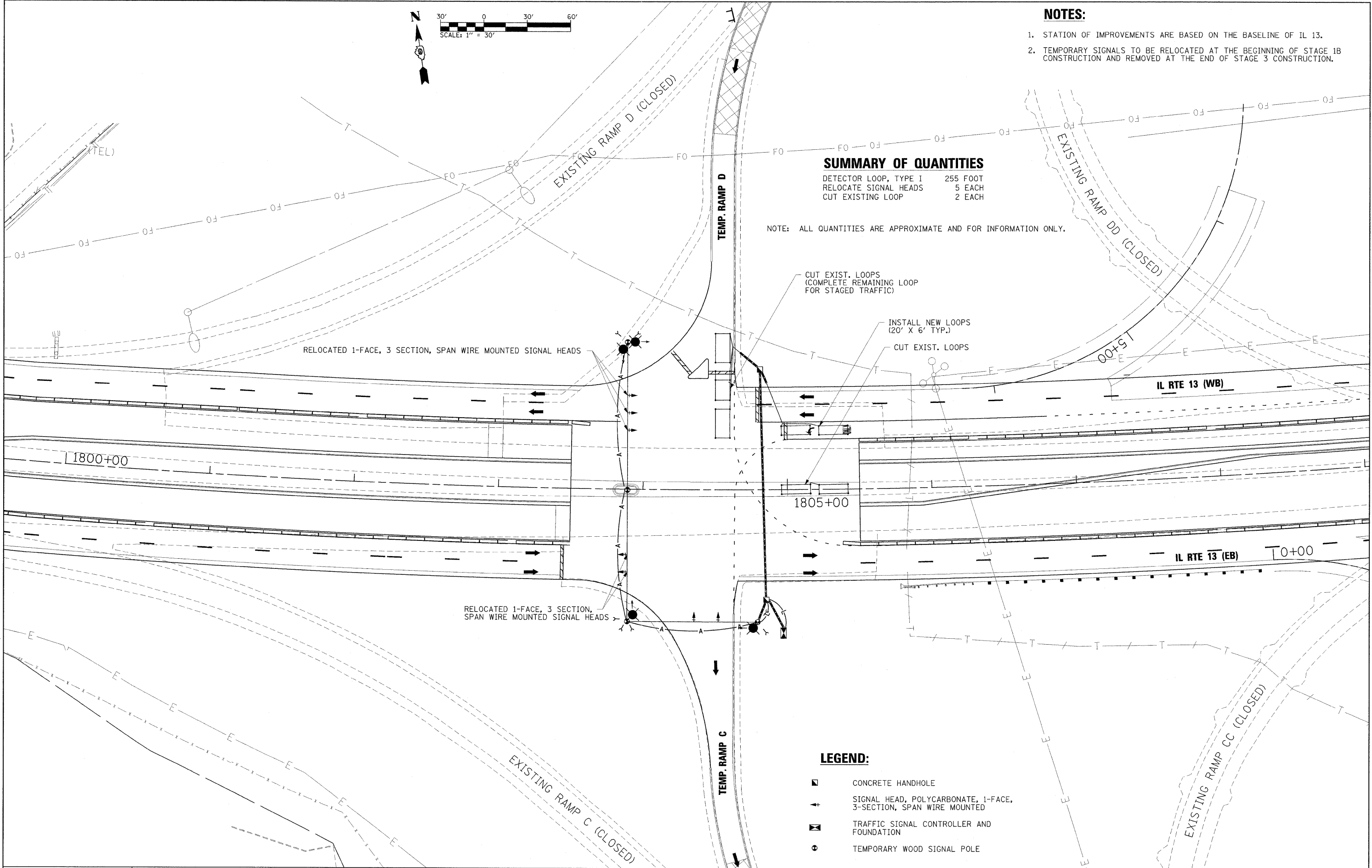
**NOTES:**

1. STATION OF IMPROVEMENTS ARE BASED ON THE BASELINE OF IL 13.
2. TEMPORARY SIGNALS TO BE RELOCATED AT THE BEGINNING OF STAGE 1B CONSTRUCTION AND REMOVED AT THE END OF STAGE 3 CONSTRUCTION.

**SUMMARY OF QUANTITIES**

DETECTOR LOOP, TYPE I	255 FOOT
RELOCATE SIGNAL HEADS	5 EACH
CUT EXISTING LOOP	2 EACH

NOTE: ALL QUANTITIES ARE APPROXIMATE AND FOR INFORMATION ONLY.



**LEGEND:**

- ◻ CONCRETE HANDHOLE
- ↑ SIGNAL HEAD, POLYCARBONATE, 1-FACE, 3-SECTION, SPAN WIRE MOUNTED
- ◻ TRAFFIC SIGNAL CONTROLLER AND FOUNDATION
- ⊙ TEMPORARY WOOD SIGNAL POLE

FILE NAME =	USER NAME = Brad Downen	DESIGNED - BSE	REVISED -
...D978182-shr-temp_stg007-stage1b.dgn		DRAWN - BSE	REVISED -
	PLOT SCALE = 30.0000' / IN.	CHECKED - SPH	REVISED -
	PLOT DATE = 10/12/2011	DATE - 10/07/11	REVISED -

**STATE OF ILLINOIS  
DEPARTMENT OF TRANSPORTATION**

**TEMPORARY SIGNAL & LIGHTING PLAN-STAGE 1B  
TEMPORARY RAMP C & D**

SCALE: 1" = 30'    SHEET NO.    OF    SHEETS    STA.    TO STA.

F.A. RTE.	SECTION	COUNTY	TOTAL SHEETS	SHEET NO.
*	(X1-6-2)HBK-2, HB-1,2; (IX-1R-1	WILLIAMSON	968	227
* F.A.I. 57 AND F.A.P. 331			CONTRACT NO. 78182	
ILLINOIS FED. AID PROJECT				