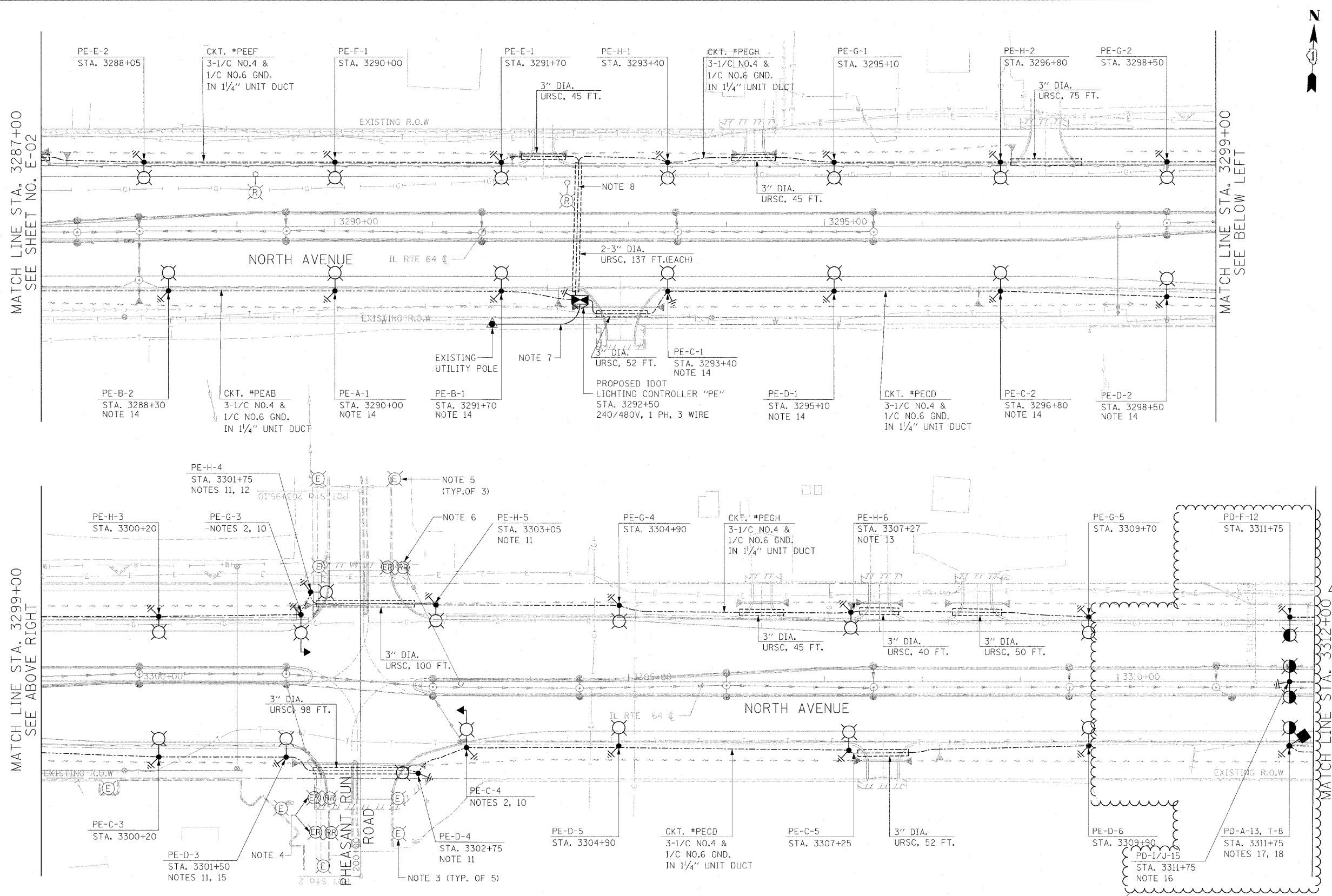


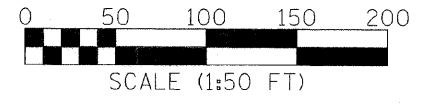
F.A.P. RTE.	SECTION	COUNTY	TOTAL SHEETS	SHEET NO.
307	130 R-2	DUPAGE, KANE	647	417
STA.	TO STA.			
FED. ROAD DIST. NO.	ILLINOIS	FED. AID PROJECT	62410	



- NOTES:**
- SEE SHEET E-01 FOR ELECTRICAL SYMBOLS, CALL-OUT SAMPLES, ABBREVIATIONS AND GENERAL NOTES.
 - SEE TRAFFIC SIGNAL PLANS FOR THE EXACT LOCATIONS OF COMBINATION TRAFFIC SIGNAL/LIGHT POLES.
 - EXISTING ORNAMENTAL LIGHTING UNIT OWNED AND OPERATED BY PHEASANT RUN RESORT. CONTRACTOR SHALL PROTECT LIGHTING UNIT FROM DAMAGE DURING CONSTRUCTION.
 - REMOVE, STORE AND PROTECT EXISTING LIGHTING UNIT AND REINSTALL EXISTING LIGHTING UNIT 3 FEET FROM PROPOSED BACK OF CURB TO THE FACE OF LIGHT POLE. CONTRACTOR SHALL MATCH EXISTING POLE FOUNDATION AND RE-CIRCUIT EXISTING LIGHTING UNIT. COORDINATE ALL WORK WITH PHEASANT RUN RESORT.
 - EXISTING ORNAMENTAL LIGHTING UNIT OWNED AND OPERATED BY HILTON GARDEN INN. CONTRACTOR SHALL PROTECT LIGHTING UNIT FROM DAMAGE DURING CONSTRUCTION.
 - REMOVE, STORE AND PROTECT EXISTING LIGHTING UNIT AND REINSTALL EXISTING LIGHTING UNIT 3 FEET FROM PROPOSED BACK OF CURB TO THE FACE OF LIGHT POLE. CONTRACTOR SHALL MATCH EXISTING POLE FOUNDATION AND RE-CIRCUIT THE EXISTING LIGHTING UNIT. COORDINATE ALL WORK WITH HILTON GARDEN INN.
 - PROVIDE 3-350 KCMIL TYPE USE IN 4" URSC FROM THE UTILITY POLE TO THE LIGHTING CONTROLLER CABINET. COORDINATE ALL WORK WITH COMED.
 - INSTALL ONE 1/4" UNIT DUCT PER URSC UNDER ROADWAY.
 - THE TYPICAL LIGHT POLE SETBACK SHALL BE 15 FEET FROM THE EDGE OF PAVEMENT TO THE FACE OF LIGHT POLE, UNLESS NOTED OTHERWISE.
 - PROVIDE 4" PVC CONDUIT SLEEVES IN THE POLE FOUNDATION FOR LIGHTING UNIT DUCTS. COORDINATE ALL WORK WITH TRAFFIC SIGNAL INSTALLATION.
 - LUMINAIRE SHALL BE 400W HPS.
 - LIGHT POLE SETBACK SHALL BE 2 FEET FROM CENTERLINE OF POLE TO BACK EDGE OF SIDEWALK.
 - OFFSET LIGHTING UNIT 25'-6" FEET FROM THE EDGE OF PAVEMENT TO THE FACE OF LIGHT POLE.
 - OFFSET LIGHTING UNIT 18'-6" FROM THE EDGE OF PAVEMENT TO THE FACE OF LIGHT POLE.
 - OFFSET LIGHTING UNIT 16'-0" FROM THE EDGE OF PAVEMENT TO THE FACE OF LIGHT POLE.
 - FOR LIGHT POLES LOCATED IN THE MEDIAN AREA, CONTRACTOR SHALL CENTER LIGHT POLES BETWEEN MEDIAN OR ADJUST LIGHT POLES TO MEET MINIMUM 2 FEET CLEARANCE FROM THE BACK OF CURB TO THE FACE OF LIGHT POLE.
 - PROVIDE 2 - 3/2" PVC CONDUIT SLEEVES IN THE POLE FOUNDATION FOR LIGHTING UNIT DUCTS.

NOTES:

18. PROVIDE AN AVIATION OBSTRUCTION WARNING LUMINAIRE. THE OBSTRUCTION LUMINAIRE SHALL BE OPERATED AT 240 VOLTS. SEE SHEET E-12 FOR AVIATION OBSTRUCTION WARNING LUMINAIRE MOUNTING DETAILS.



REVISIONS	
NAME	DATE
ADDENDUM NO. 1	12/23/11

ILLINOIS DEPARTMENT OF TRANSPORTATION
 F.A.P. ROUTE 307 (ILLINOIS ROUTE 64)

ROADWAY LIGHTING PLAN
 STA. 3287+00 TO STA. 3312+00

SCALE: 1" = 50'
 DATE: NOVEMBER 1, 2011

DRAWN BY: HR
 CHECKED BY: JM

