

STATE OF ILLINOIS  
DEPARTMENT OF TRANSPORTATION  
DIVISION OF HIGHWAYS  
PLANS FOR PROPOSED HIGHWAY

SCALES { PLAN  
PROFILE HORIZ.  
PROFILE VERT.  
CROSS SECTIONS

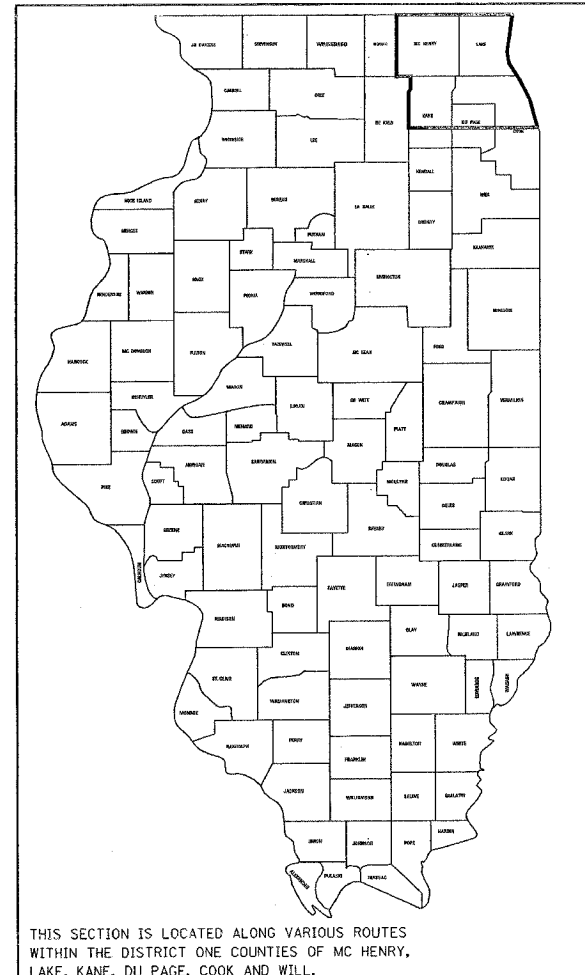
ROUTE: VARIOUS EXPRESSWAYS AND ARTERIAL  
HIGHWAYS – NORTHERN PART, DISTRICT ONE  
SECTION: 2005-025 I  
FENCE REPAIR  
COUNTY: VARIOUS DISTRICT WIDE  
C-91-212-05

FOR INDEX OF SHEETS, SEE SHEET 2

SEE LOCATION MAPS  
SHEETS 4 THRU 8

FA. RTE.	SECTION	COUNTY	TOTAL SHEETS	SHEET NO.
VAR.	2005-025 I	VARIOUS	14	1
PLAN, A. REL.	ILLINOIS	PROJECT		

D-91-212-05  
CONTRACT NO. 62959



THIS SECTION IS LOCATED ALONG VARIOUS ROUTES  
WITHIN THE DISTRICT ONE COUNTIES OF MC HENRY,  
LAKE, KANE, DU PAGE, COOK AND WILL.

STATE OF ILLINOIS	
DEPARTMENT OF TRANSPORTATION	
DIVISION OF HIGHWAYS	
SUBMITTED	September 16, 20 05 Dina O'Leary / PP
EXAMINED	October 14, 20 05 Mike Kane / 10
PASSED	October 14, 20 05 Eric E. Kern / 10
	DEPUTY DIRECTOR OF HIGHWAYS/SECTION ENGINEER
	ENGINEER OF DESIGN AND ENVIRONMENT
	DEPUTY DIRECTOR, DIVISION OF HIGHWAYS

PRINTED BY AUTHORITY OF THE  
STATE OF ILLINOIS

CONTRACT NO. 62959

VARIOUS ROUTES SECTION 2005-025 I COUNTY: VARIOUS

F.A. RTE.	SECTION	COUNTY	TOTAL SHEETS	SHEET NO.
VAR.	2005-025 I	VAR.	14	2
STA.		TO STA.		
FED. ROAD DIST. NO.		ILLINOIS	FED. AID PROJECT	

INDEX OF SHEETS

1. TITLE SHEET
2. INDEX OF SHEETS  
LIST OF APPLICABLE STATE STANDARDS
3. SUMMARY OF QUANTITIES
4. COOK COUNTY (NORTH OF ILL. 38) LOCATION MAP
5. DUPAGE COUNTY (NORTH OF ILL. 38) LOCATION MAP
6. KANE COUNTY (NORTH OF ILL. 38) LOCATION MAP
7. LAKE COUNTY LOCATION MAP
8. MCHENRY COUNTY LOCATION MAP
9. DETAILS OF PEDESTRIAN BARRIER TYPE III (STD. 10-SS-514R)
10. CHAIN LINK FENCE (STD. 10-SS-506B)
11. CHAIN LINK FENCE POST SLEEVE REPAIR DETAIL
12. PROPOSED PEDESTRIAN BARRIER AND CHAIN LINK FENCE  
WITH TENSION WIRE AND FENCE RAIL REMOVAL
13. SPECIAL DETAILS
14. TRAFFIC CONTROL DETAILS FOR SHOULDER CLOSURE AND  
PARTIAL RAMP CLOSURES

STATE STANDARDS

664001-01  
665001  
701001-01  
701006-02  
701101-01  
701106-01  
701201-02  
701301-02  
701411-03  
701421-01  
701422-01  
701501-03  
701606-04  
710701-04  
701801-03

REVISIONS	
NAME	DATE

ILLINOIS DEPARTMENT OF TRANSPORTATION

INDEX OF SHEETS AND  
STATE STANDARDS

SCALE: VERT.  
DATE:     HORIZ.

DRAWN BY  
CHECKED BY

CONTRACT NO. 62959				
F.A. RTE.	SECTION	COUNTY	TOTAL SHEETS	SHEET NO.
VAR.	2005-025 I	VAR.	14	3
STA.		TO STA.		
FED. ROAD DIST. NO.		ILLINOIS	FED. AID PROJECT	

URBAN Y102					
CODE NO.	ITEM DESCRIPTION	UNIT	TOTAL	CONT. MAINT.	MCHD
66400505	CHAIN LINK FENCE, 8'	FOOT	215	170	45
66410300	CHAIN LINK FENCE REMOVAL	FOOT	50	40	10
66410705	CHAIN LINK GATES (SPECIAL)	SQ FT	875	700	175
66500105	WOVEN WIRE FENCE, 4'	FOOT	2500	2000	500
X0300160	PULL POST ARRANGEMENT	EACH	2	1	1
X0321153	CHAIN LINK FENCE POST SLEEVE REPAIR	EACH	50	40	10
X6640100	FENCE RAIL REMOVAL	FOOT	2000	1600	400
Z0009600	CHAIN LINK FABRIC, SPECIAL, 5'-0"	FOOT	25	20	5
Z0009700	CHAIN LINK FABRIC, SPECIAL, 6'-0"	FOOT	1600	1320	280
Z0009800	CHAIN LINK FABRIC, SPECIAL, 7'-0"	FOOT	10	8	2
Z0009810	CHAIN LINK FABRIC, SPECIAL, 8'-0"	FOOT	75	60	15
Z0009900	CHAIN LINK FABRIC, TYPE 1, 4'-0"	FOOT	21000	16800	4200
Z0010300	CHAIN LINK FABRIC, TYPE 3, SPECIAL	FOOT	500	400	100
Z0033200	LINE POST, TYPE 1	EACH	900	720	180
Z0033305	LINE POST, TYPE 3 (SPECIAL)	EACH	25	20	5
Z0042500	POST, SPECIAL	EACH	75	60	15
Z0042505	POST REMOVAL AND REPLACEMENT	EACH	5	4	1
Z0074000	TERMINAL POST, TYPE 1	EACH	50	40	10
Z0074010	TERMINAL POST, TYPE 3 SPECIAL	EACH	5	4	1

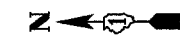
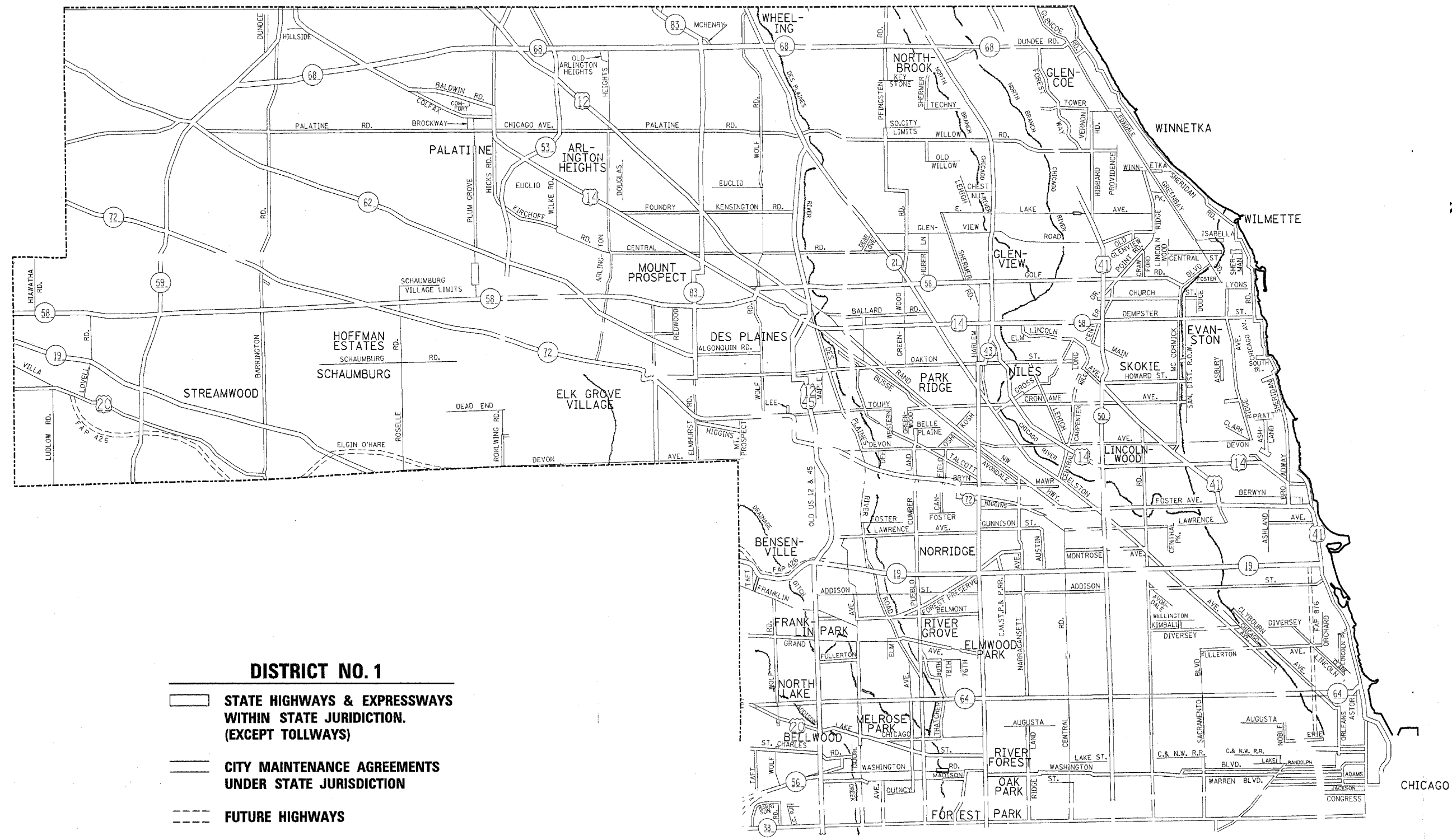
REVISIONS	
NAME	DATE

ILLINOIS DEPARTMENT OF TRANSPORTATION

SUMMARY OF QUANTITIES

SCALE: VERT.  
DATE:                      HORIZ.

DRAWN BY  
CHECKED BY



- DISTRICT NO. 1**
- STATE HIGHWAYS & EXPRESSWAYS  
WITHIN STATE JURIDICION.  
(EXCEPT TOLLWAYS)
  - CITY MAINTENANCE AGREEMENTS  
UNDER STATE JURIDICION
  - FUTURE HIGHWAYS
  - VARIOUS AGENCIES HIGHWAYS

REVISIONS	
NAME	DATE

ILLINOIS DEPARTMENT OF TRANSPORTATION  
NORTHERN PART, DISTRICT 1

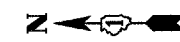
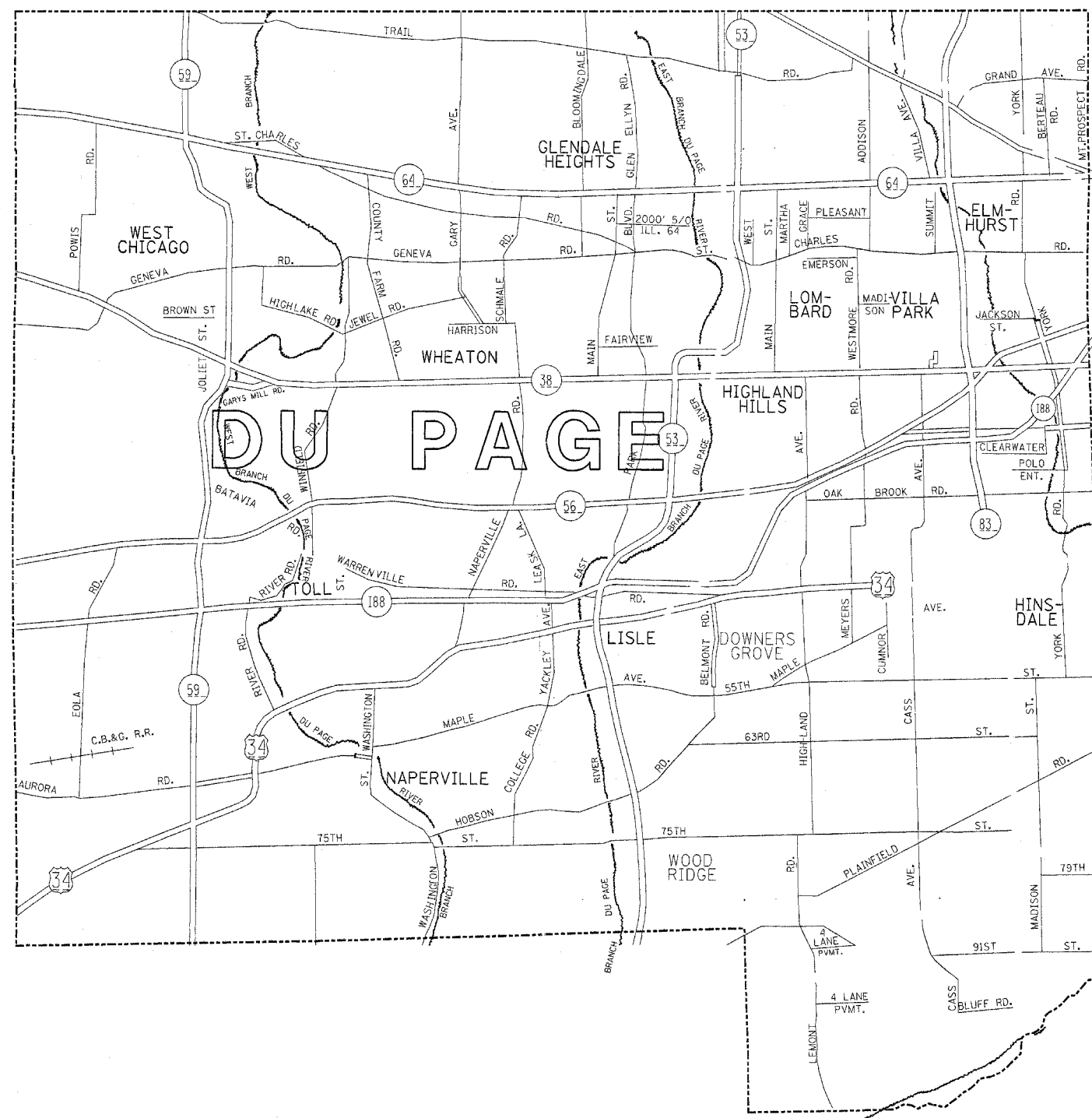
FENCE REPAIR LOCATION MAP  
COOK COUNTY  
NORTH OF AND INCLUDING  
IL. ROUTE 38

SCALE: DATE: 9/16/2005

DRAWN BY: CHECKED BY:

F.A. RTE.	SECTION	COUNTY	TOTAL SHEETS	SHEET NO.
VAR.	2005-025 I	*	14	5
STA.		TO STA.		
FED. ROAD DIST. NO.		ILLINOIS	FED. AID PROJECT	

\*WILL, KANE, DU PAGE AND COOK  
CONTRACT NO. 62959



### DISTRICT NO. 1

- CITY MAINTENANCE AGREEMENTS UNDER STATE JURISDICTION
- FUTURE HIGHWAYS
- VARIOUS AGENCIES HIGHWAYS

REVISIONS	
NAME	DATE

ILLINOIS DEPARTMENT OF TRANSPORTATION  
NORTHERN PART, DISTRICT 1

FENCE REPAIR  
DU PAGE COUNTY  
NORTH AND INCLUDING OF IL. ROUTE 38



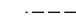

SCALE: 1"=1.5 MILES  
DATE: 9/16/2005

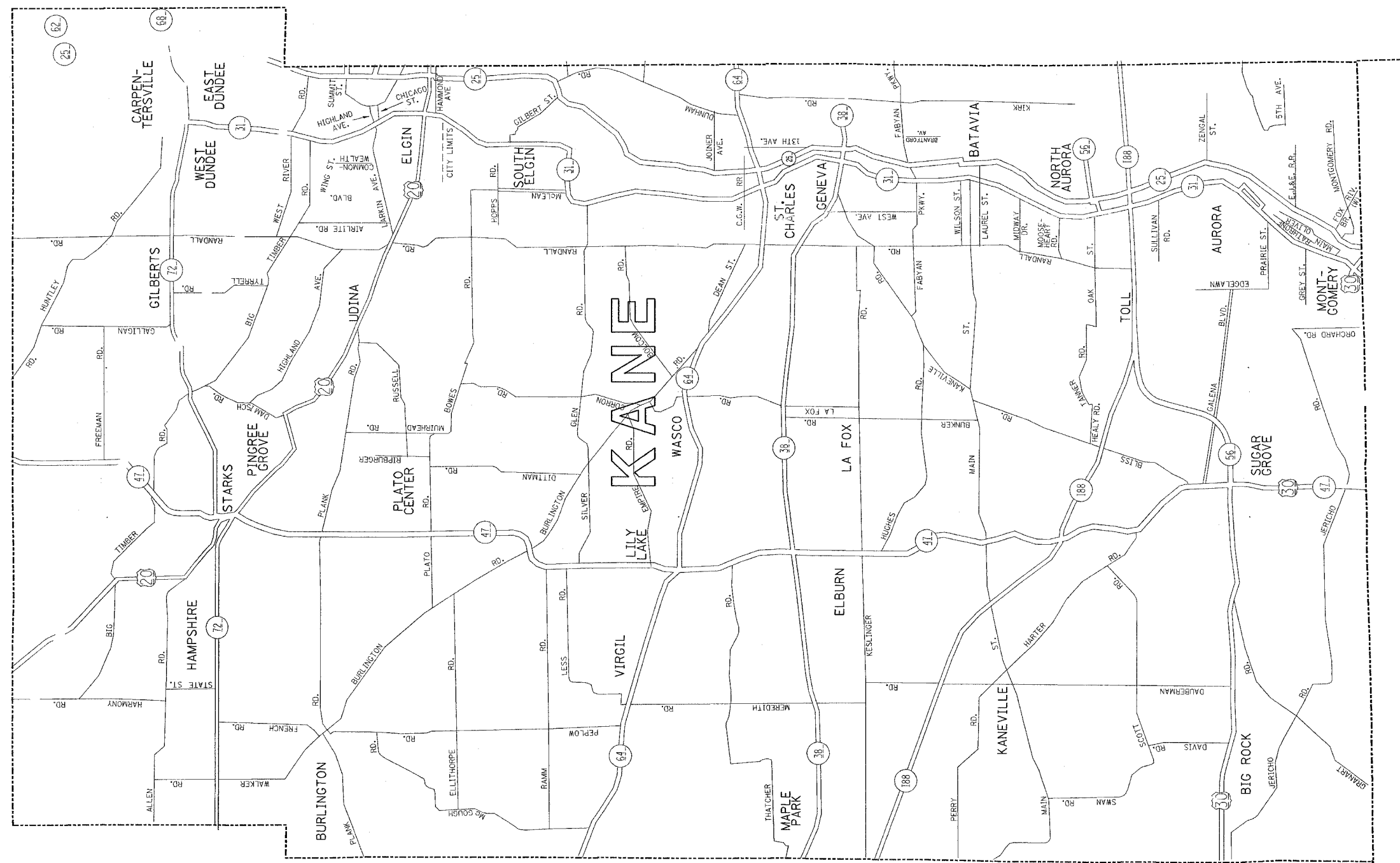
DRAWN BY  
CHECKED BY

F. A. RT.	SECTION	COUNTY	TOTAL SHEETS	SHEET NO.
VAR.	2005-025 I	*	14	6
STA.		TO STA.		
FED. ROAD DIST. NO.		ILLINOIS		FED. AID PROJECT

\* MC HENRY, LAKE, KANE, DU PAGE AND COOK  
CONTRACT NO. 62959

## DISTRICT NO. 1

-  STATE HIGHWAYS & EXPRESSWAYS WITHIN STATE JURIDICITION. (EXCEPT TOLLWAYS)
-  CITY MAINTENANCE AGREEMENTS UNDER STATE JURIDICITION
-  FUTURE HIGHWAYS
-  VARIOUS AGENCIES HIGHWAYS



REVISIONS	
NAME	DATE

ILLINOIS DEPARTMENT OF TRANSPORTATION  
NORTHERN PART, DISTRICT 1  
FENCE REPAIR  
LOCATION MAP  
KANE COUNTY  
NORTH OF AND INCLUDING IL. ROUTE 38  
SCALE: 1"=1.5 MILES  
DATE: 9/16/2005  
DRAWN BY  
CHECKED BY

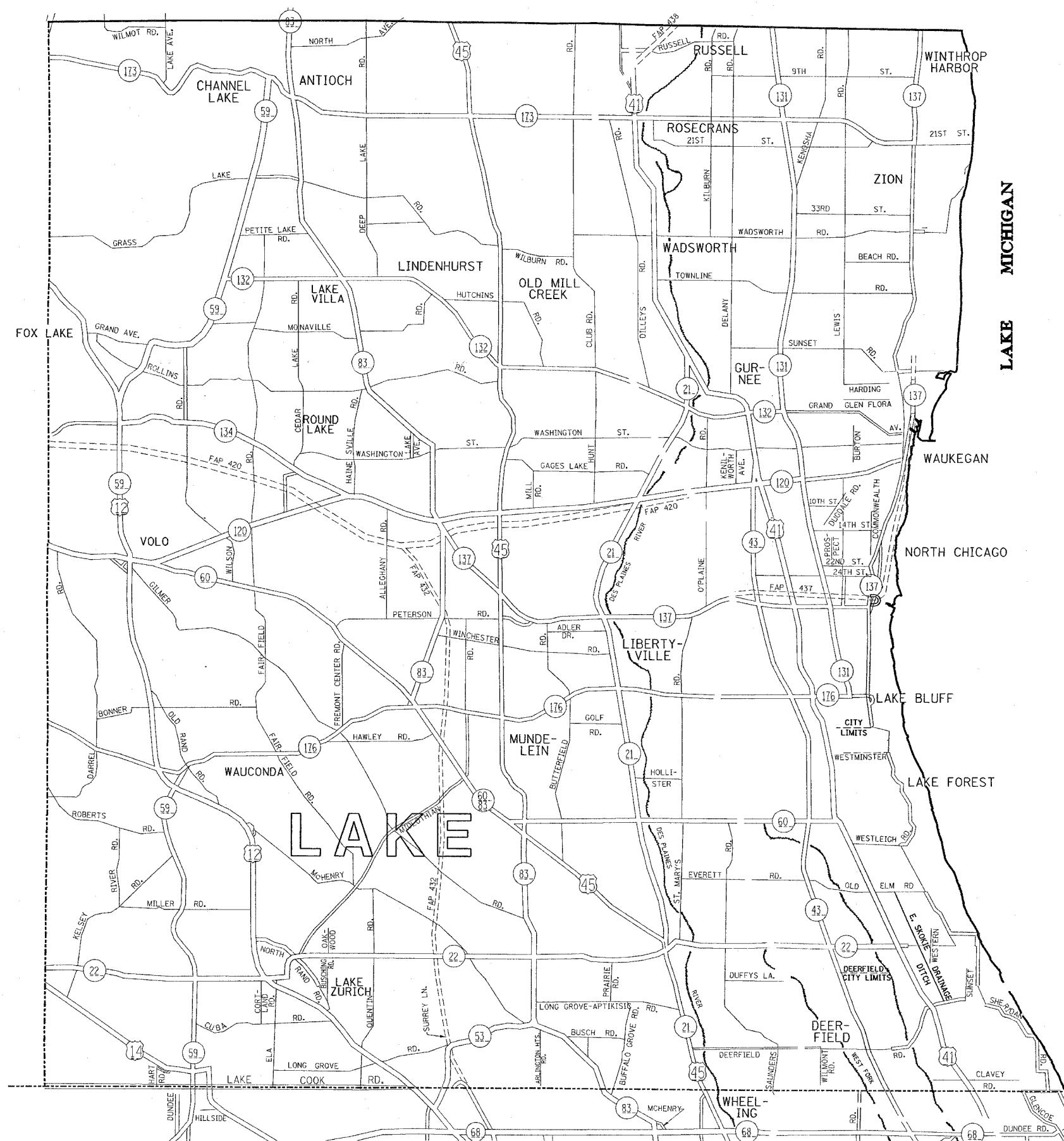
F. & H. NO.	SECTION	COUNTY	TOTAL SHEETS	SHEET NO.
VAR.	2004-082 I	*	12	7
STA.	TO STA.			
FED. ROAD DIST. NO.	ILLINOIS	FED. AID PROJECT		

\* MC HENRY, LAKE, KANE, DU PAGE AND COOK  
CONTRACT NO. 62824



## DISTRICT NO. 1

- STATE HIGHWAYS & EXPRESSWAYS  
WITHIN STATE JURISDICTION.  
(EXCEPT TOLLWAYS)
- CITY MAINTENANCE AGREEMENTS  
UNDER STATE JURISDICTION
- FUTURE HIGHWAYS
- VARIOUS AGENCIES HIGHWAYS



ILLINOIS DEPARTMENT OF TRANSPORTATION  
NORTHERN PART, DISTRICT 1

FENCE REPAIR  
LOCATION MAP  
LAKE COUNTY

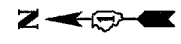
SCALE: 1"=1.5 MILES  
DATE: 9/16/2005

DRAWN BY  
CHECKED BY

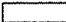


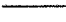
REVISIONS	
NAME	DATE

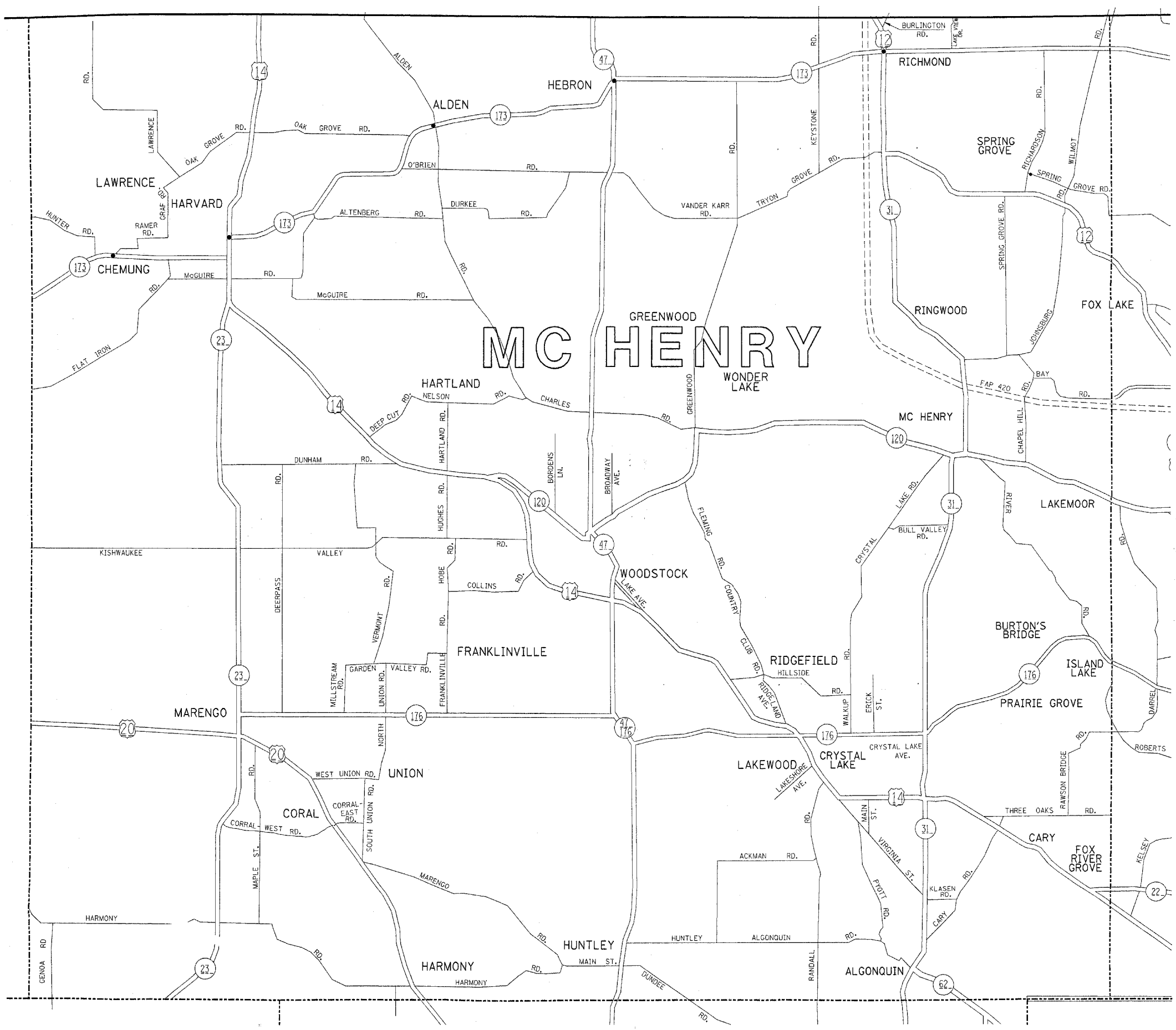
F. A. Rte.	SECTION	COUNTY	TOTAL SHEETS	SHEET NO.
VAR.	2005-025 I	*	14	8
STA.	TO STA.			
FED. ROAD DIST. NO.	ILLINOIS	FED. AID PROJECT		

\* MC HENRY, LAKE, KANE, DU PAGE AND COOK  
CONTRACT NO. 62959



### DISTRICT NO. 1

-  STATE HIGHWAYS & EXPRESSWAYS  
WITHIN STATE JURISDICTION.  
(EXCEPT TOLLWAYS)
-  CITY MAINTENANCE AGREEMENTS  
UNDER STATE JURISDICTION
-  FUTURE HIGHWAYS
-  VARIOUS AGENCIES HIGHWAYS



REVISIONS	
NAME	DATE

ILLINOIS DEPARTMENT OF TRANSPORTATION  
NORTHERN PART, DISTRICT 1

FENCE REPAIR  
LOCATION MAP  
MC HENRY COUNTY

SCALE: 1"=1.5 MILES  
DATE : 9/16/2005

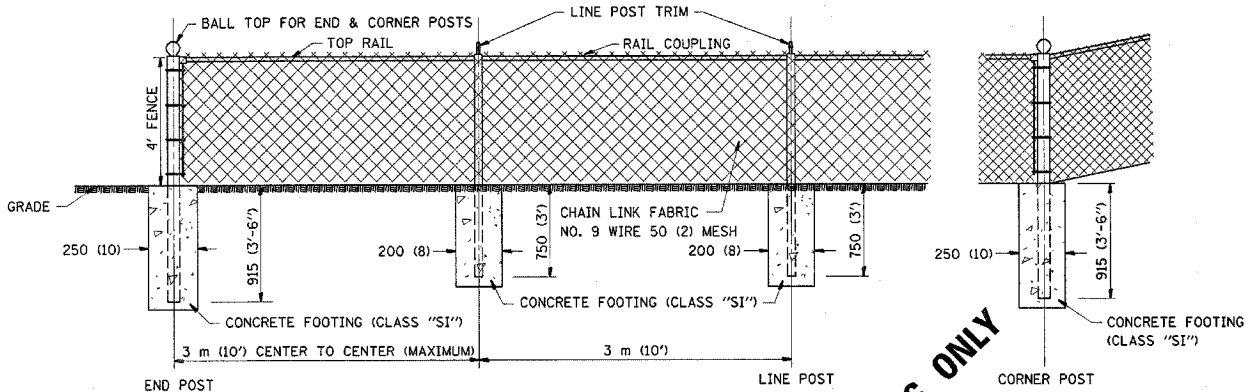
DRAWN BY CADD  
CHECKED BY



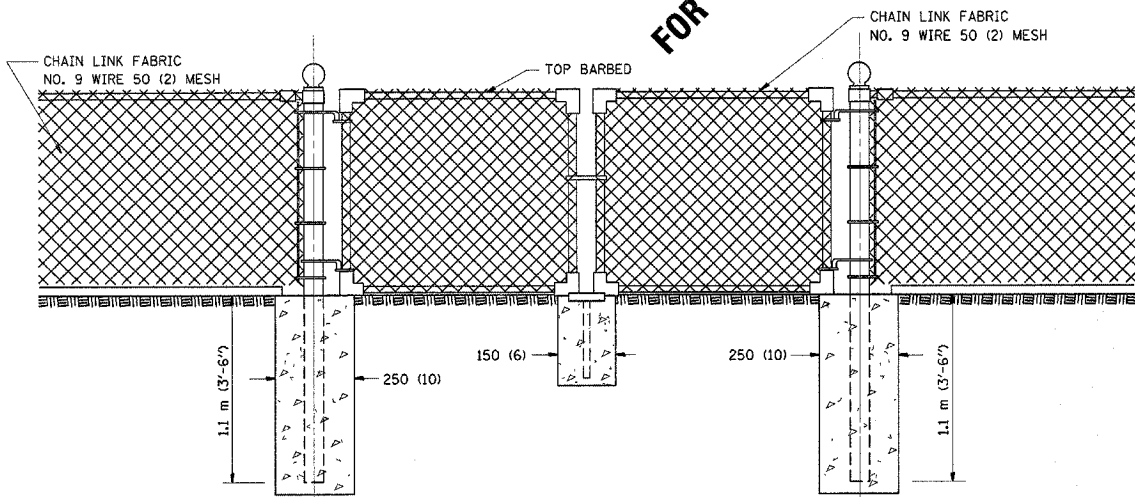


F.A. RTE.	SECTION	COUNTY	TOTAL SHEETS	SHEET NO.
VAR.	2005-025 1	VARIOUS	14	10
FED. ROAD DIST. NO. _ ILLINOIS FED. AID PROJECT				

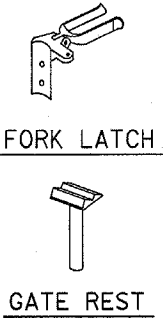
CONTRACT NO. 62959



CHAIN LINK FENCE



DRIVE GATE 1 m (3'-7") X 3 m (10')



FORK LATCH

GATE REST

ALL DIMENSIONS ARE IN MILLIMETERS (INCHES)  
UNLESS OTHERWISE SHOWN.

ILLINOIS DEPARTMENT OF TRANSPORTATION

CHAIN LINK FENCE  
10-SS-506 B

SCALE: NONE  
DATE: 9/16/2005

DRAWN BY C.A.D.D.  
CHECKED BY

REVISIONS	
NAME	DATE

NOTE:

THE CHAIN LINK FENCE AS SHOWN HEREIN SHALL BE CONSTRUCTED AT SUCH LOCATIONS AS SHOWN ON PLANS AND IN ACCORDANCE WITH THE SPECIAL PROVISIONS

THE ENGINEER SHALL ESTABLISH ALL NECESSARY LINE AND GRADE PRIOR TO THE ERECTION OF THE FENCE IN CONFORMANCE WITH THE PLANS

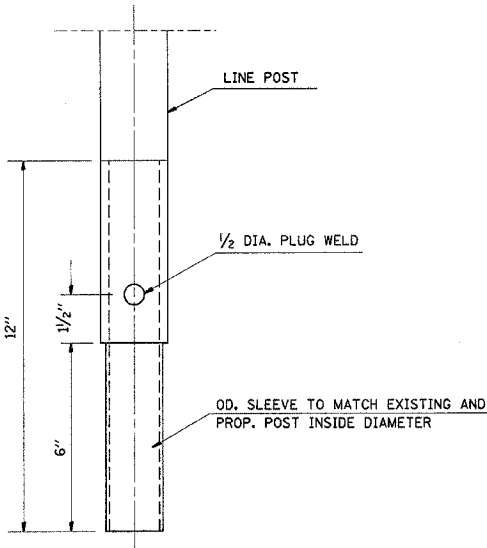
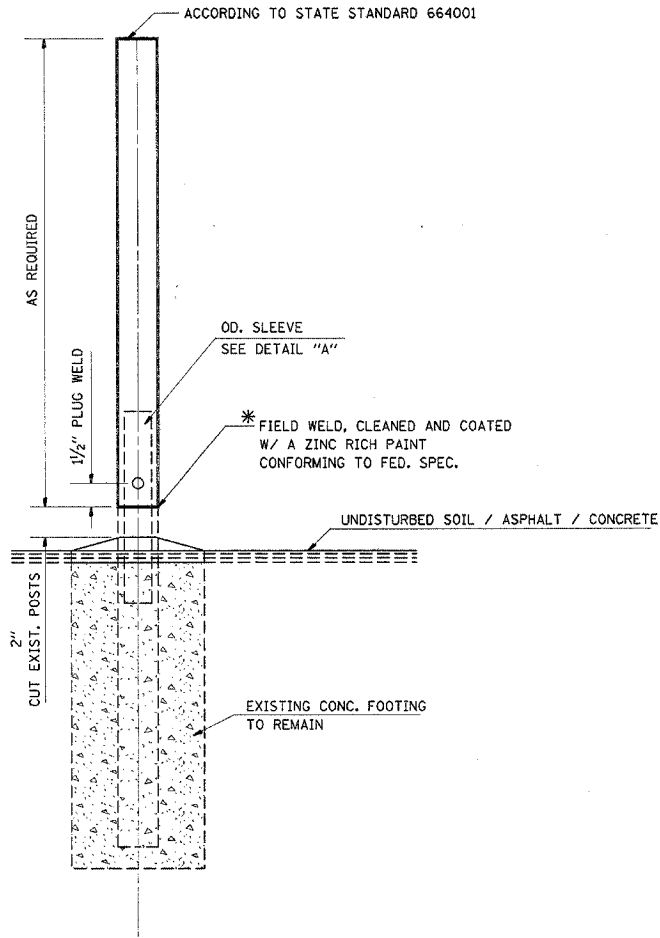
F. A. ATE.	SECTION	COUNTY	TOTAL SHEETS	SHEET NO.
VAR.	2005-025 I	VARIOUS	14	11
STA.	TO STA.			
FED. ROAD DIST. NO.	ILLINOIS	FED. AID PROJECT		

CONTRACT NO. 62959

GENERAL NOTES:

THIS WORK CONSISTS OF FURNISHING ALL LABOR, MATERIALS, TOOLS AND EQUIPMENT TO REPAIR CHAIN LINK FENCE POST SLEEVE AS SHOWN ON THE PLANS OR AS DIRECTED BY THE ENGINEER, AND IN ACCORDANCE WITH STATE STANDARD 664001.

BASIS OF PAVEMENT: THIS WORK SHALL BE PAID FOR AT THE CONTRACT UNIT PRICE EACH FOR "CHAIN LINK FENCE POST SLEEVE REPAIR" WHICH PRICE SHALL BE PAYMENT IN FULL TO COMPLETE THE WORK AS SPECIFIED HEREIN.



SLEEVE DET. DWG  
DETAIL "A"  
SLEEVE DETAIL

\* THIS WORK SHALL BE INCLUDED IN THE COST OF THE PAY ITEM "CHAIN LINK FENCE POST SLEEVE REPAIR"

ILLINOIS DEPARTMENT OF TRANSPORTATION

CHAIN LINK FENCE POST SLEEVE REPAIR DETAIL

REVISIONS	
NAME	DATE

SCALE: NONE  
DATE 9/16/2005

DRAWN BY CADD  
CHECKED BY

CONTRACT NO. 62824

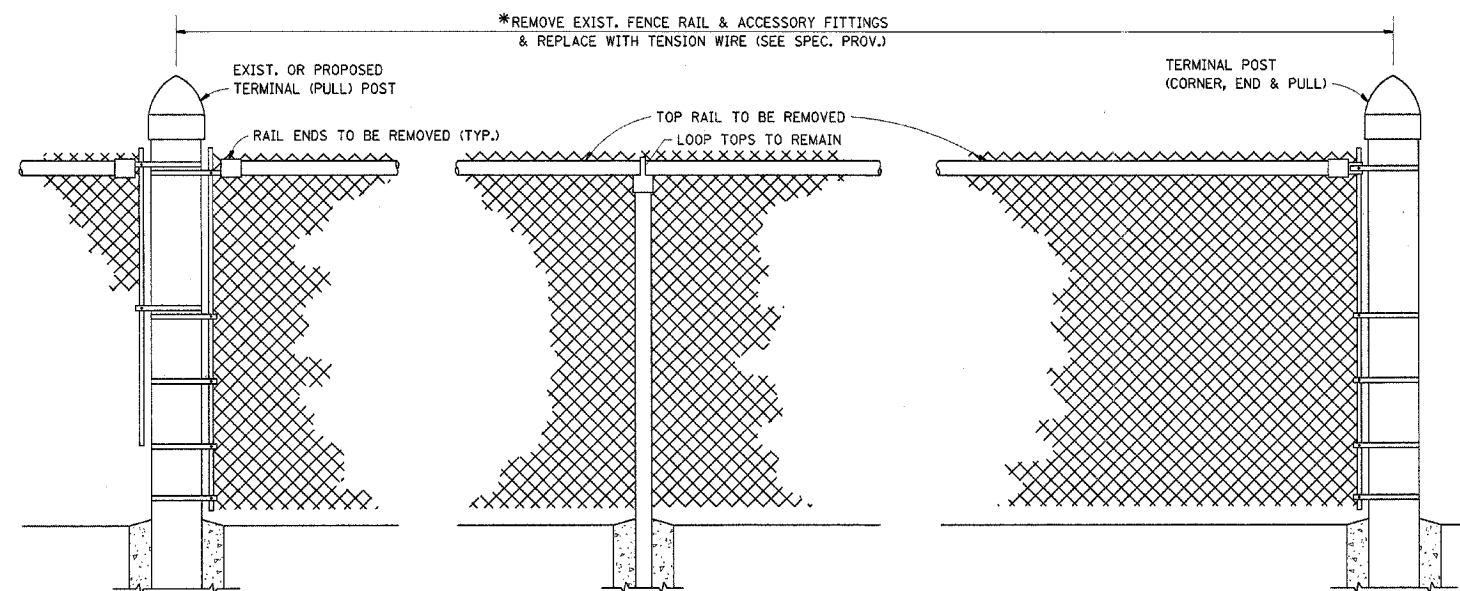
## GENERAL NOTES

**FENCE RAIL REMOVAL:** THIS ITEM CONSISTS OF REMOVING EXISTING TOP OR BOTTOM RAIL (DAMAGED OR UNDAMAGED) AND REPLACING WITH TENSION WIRE. BOTTOM TENSION WIRE SHALL BE CONSIDERED INCIDENTAL EXCEPT AT LOCATIONS OF EXISTING BOTTOM RAIL REMOVAL.

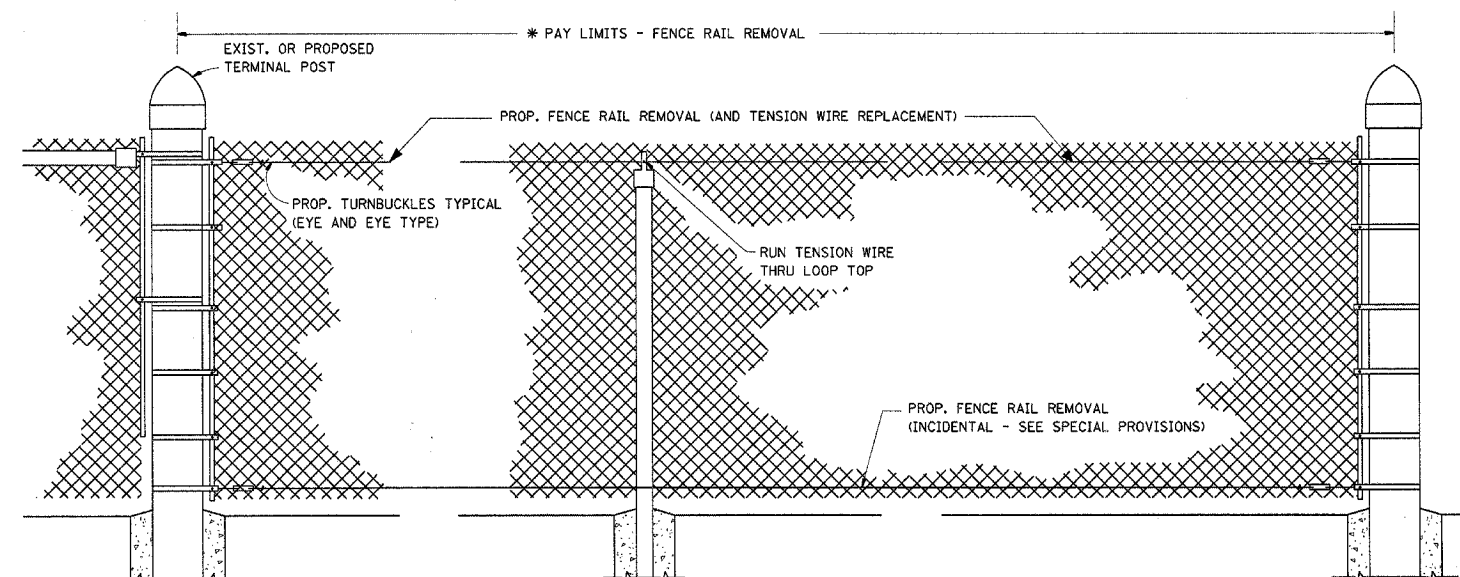
**TENSION WIRE:** THIS ITEM CONSISTS OF INSTALLING TENSION WIRE, TOP OR BOTTOM, WHERE TOP OR BOTTOM RAIL IS NON-EXISTENT, OR WHERE EXISTING DAMAGED TENSION WIRE IS REMOVED AND REPLACED BY NEW TENSION WIRE.

ALL WORK AND MATERIALS SHALL BE IN ACCORDANCE WITH THE PLANS, SPECIAL PROVISIONS, STANDARD SPECIFICATIONS AND STANDARD 664001.

REPLACEMENT OF OTHER FENCE COMPONENT PARTS SHALL BE MEASURED AND PAID FOR SEPARATELY AS DESCRIBED IN THE SPECIAL PROVISIONS.

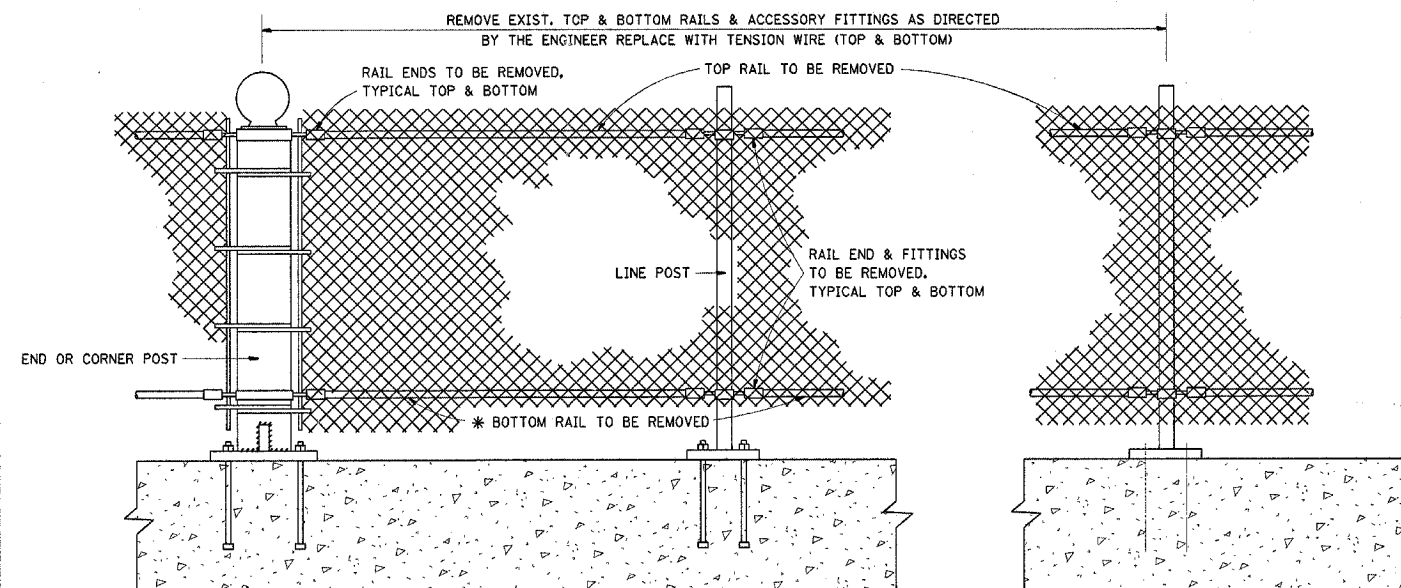


EXIST. CHAIN LINK FENCE WITH TOP RAIL

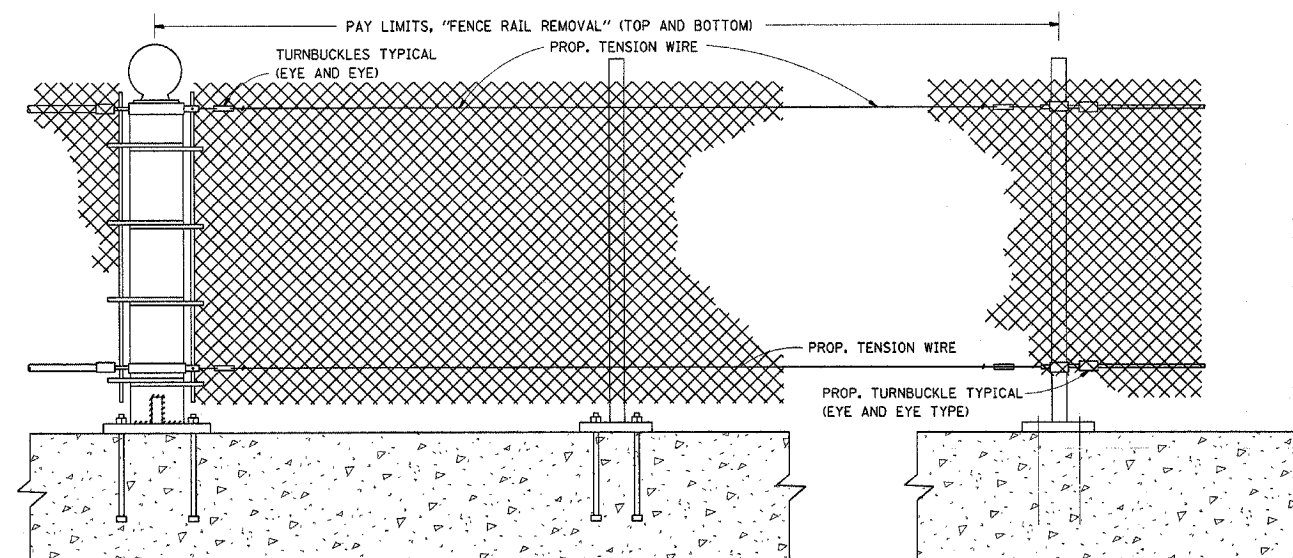


PROP. CHAIN LINK FENCE WITH "FENCE RAIL REMOVAL"

\* THE ENGINEER IN CHARGE SHALL DETERMINE THE LENGTH OF FENCE RAIL TO BE REMOVED & REPLACED WITH "TENSION WIRE"



EXIST. PEDESTRIAN BARRIER TYPE 3 WITH TOP AND BOTTOM RAILS



PROP. PEDESTRIAN BARRIER TYPE 3 WITH FENCE RAIL REMOVAL

ALL DIMENSIONS ARE IN MILLIMETERS (INCHES) UNLESS OTHERWISE SHOWN.

ILLINOIS DEPARTMENT OF TRANSPORTATION  
PROPOSED PEDESTRIAN BARRIER  
AND  
CHAIN LINK FENCE WITH TENSION  
WIRE AND FENCE RAIL REMOVAL

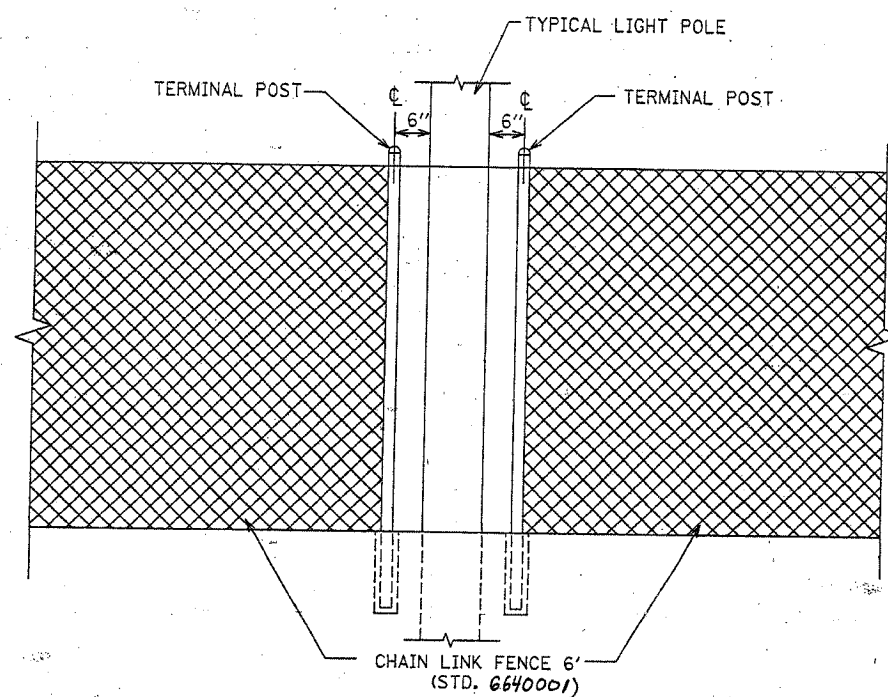
REVISIONS	
NAME	DATE

SCALE: NONE  
DATE: 9/16/2005

DRAWN BY C.A.D.D.  
CHECKED BY

F.A. ETC.	SECTION	COUNTY	TOTAL SHEETS	SHEET NO.
VAR 1005-0251	VAR		14	13
STA.	TO STA.			
FED. ROAD DIST. NO. 7	ILLINOIS	FED. AID PROJECT		

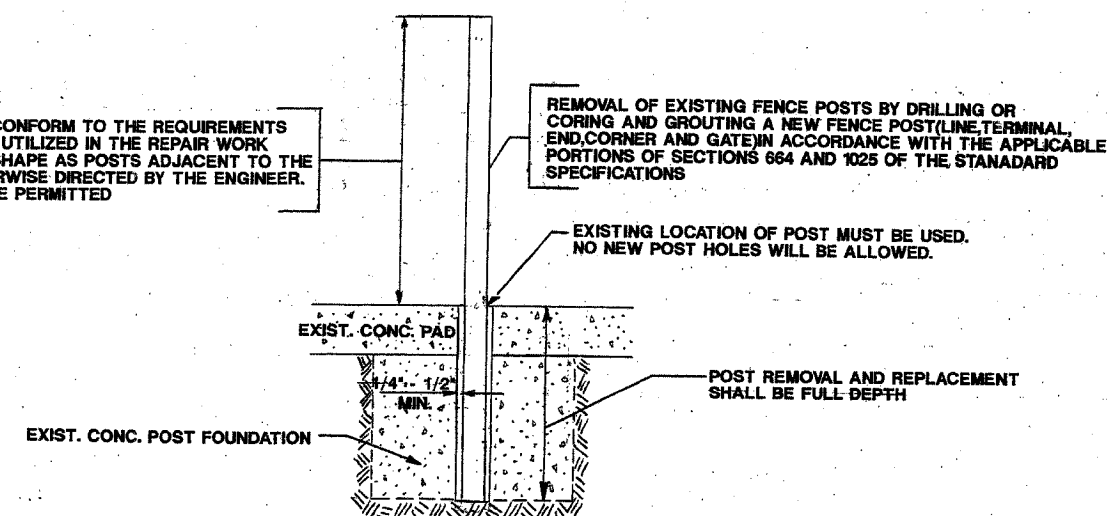
CONTRACT 62959



FENCE CONFLICT WITH LIGHT POLE

N.T.S.

GALVANIZED POSTS SHALL CONFORM TO THE REQUIREMENTS OF STANDARD 664001 POSTS UTILIZED IN THE REPAIR WORK SHALL BE THE SAME TYPE SHAPE AS POSTS ADJACENT TO THE REPAIR AREA UNLESS OTHERWISE DIRECTED BY THE ENGINEER. NO USED MATERIALS WILL BE PERMITTED



POST REMOVAL AND REPLACEMENT

REVISIONS	
NAME	DATE

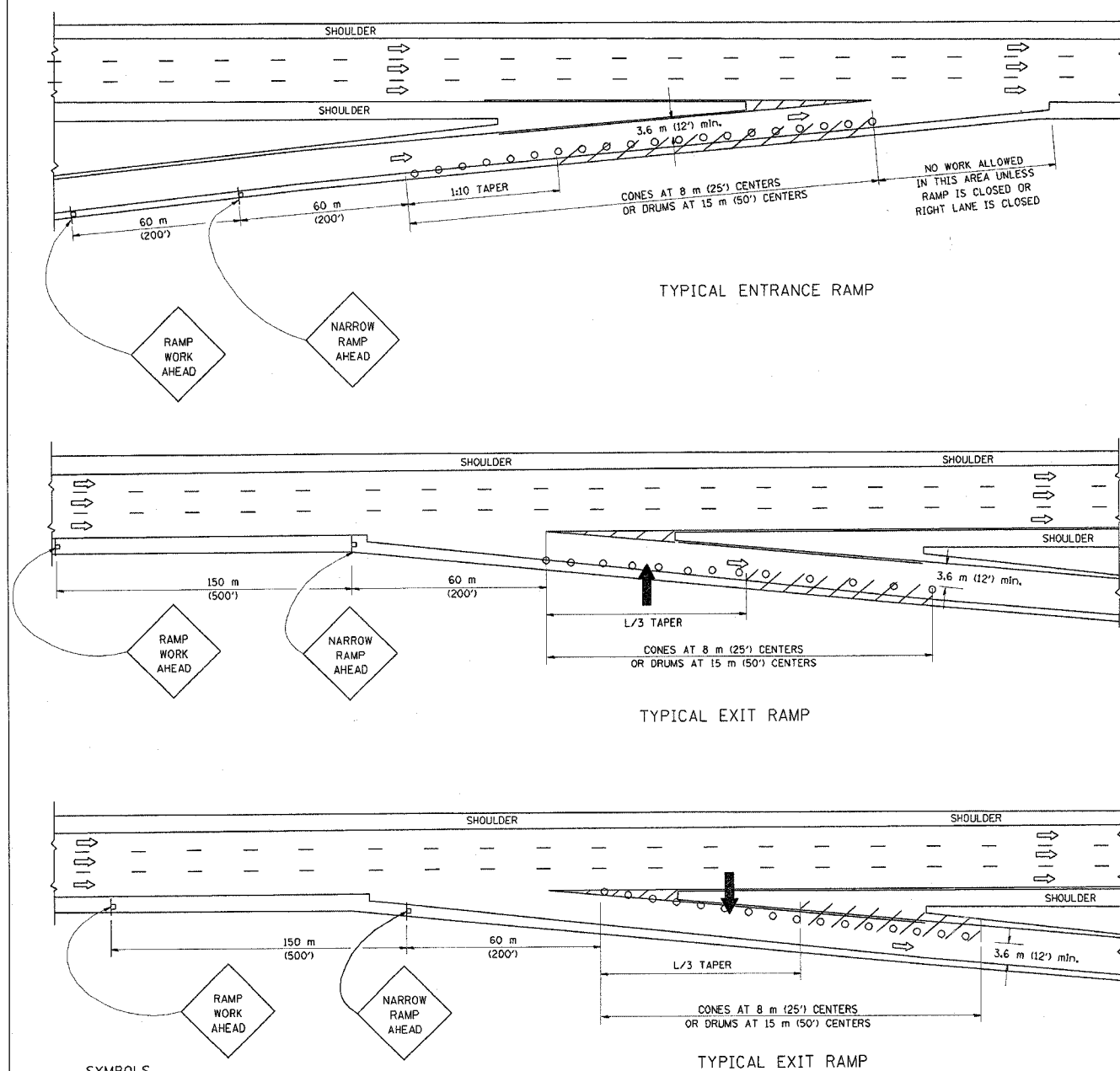
ILLINOIS DEPARTMENT OF TRANSPORTATION

## SPECIAL DETAILS

SCALE: VERT.  
HORIZ.  
DATE

DRAWN BY  
DESIGNED BY  
CHECKED BY

## PARTIAL RAMP CLOSURE DETAILS



## SYMBOLS

- ↑ ARROWBOARD
- ▨ WORK AREA
- ⊥ SIGN ON PORTABLE OR PERMANENT SUPPORT
- FLAGGER WITH CONTROL SIGN
- ⊙ DRUM WITH MONO-DIRECTIONAL STEADY BURNING LIGHT
- CONES - 700 (28) IN HEIGHT

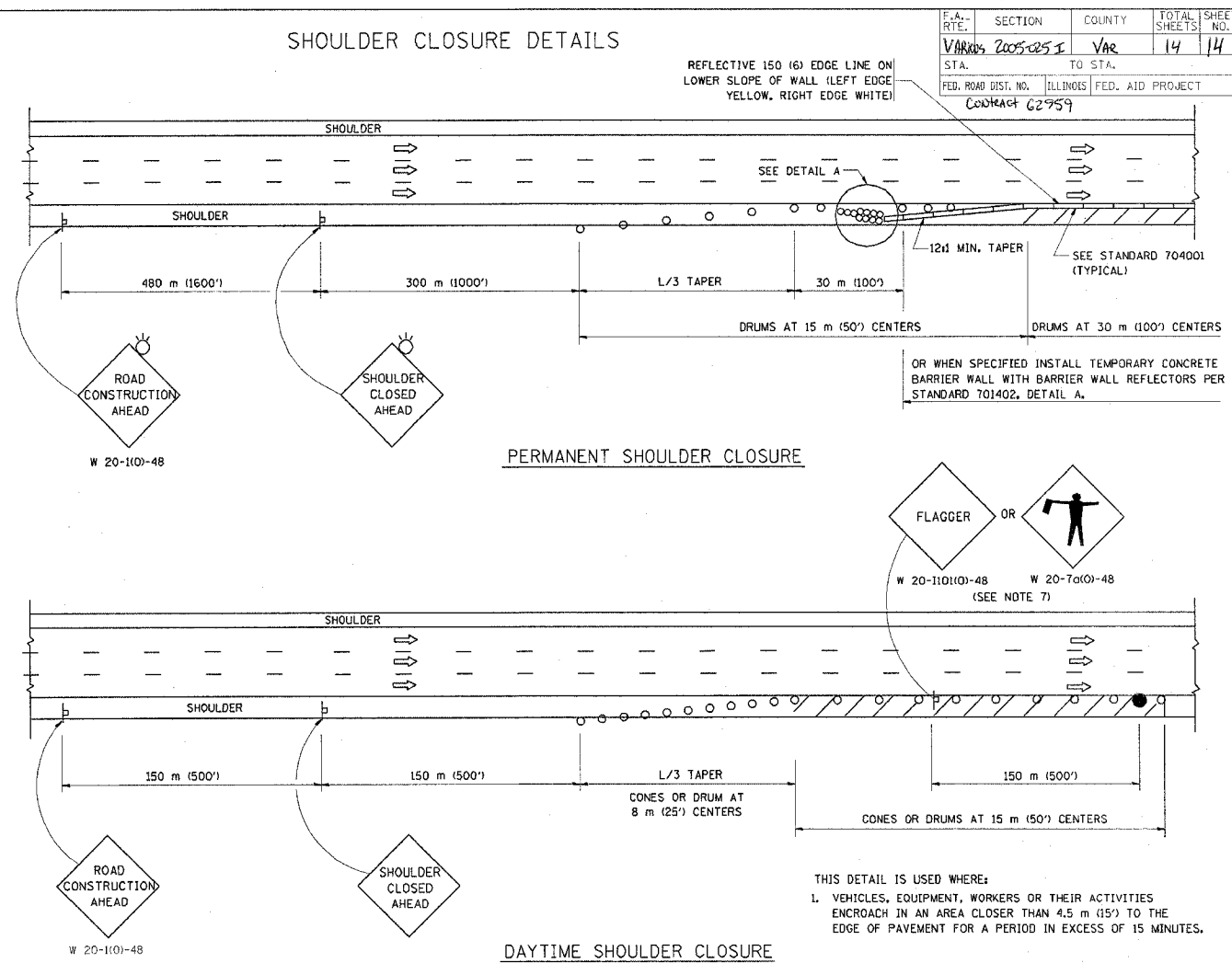
## GENERAL NOTES

- THE "L" DISTANCE EQUALS:  

SPEED LIMIT	FORMULAS
80 km/h (45 mph) OR GREATER:	METRIC: $L = 0.65(W)(S)$ ENGLISH: $L = (W)(S)$

W = WIDTH OF OFFSET IN METERS (FEET)  
S = NORMAL POSTED SPEED KM/H (MPH)
- PLASTIC DRUMS WITH HIGH PERFORMANCE REFLECTIVE SHEETING AND STEADY BURNING LIGHTS ARE REQUIRED FOR ALL NIGHTTIME CLOSURES.
- ALL SIGNS SHALL BE POST MOUNTED IF THE CLOSURE TIME EXCEEDS FOUR DAYS.
- FLASHING LIGHTS SHALL BE USED DURING THE HOURS OF DARKNESS AND SHALL BE INSTALLED ABOVE THE FIRST TWO SETS OF SIGNS.

## SHOULDER CLOSURE DETAILS



THIS DETAIL IS USED WHERE:  
 1. VEHICLES, EQUIPMENT, WORKERS OR THEIR ACTIVITIES ENCROACH IN AN AREA CLOSER THAN 4.5 m (15') TO THE EDGE OF PAVEMENT FOR A PERIOD IN EXCESS OF 15 MINUTES.

ARRAY DESIGN PER MANUFACTURER TO BE NCHRP 350 COMPLIANT FOR POSTED SPEED.

DETAIL "A"  
 IMPACT ATTENUATOR, TEMPORARY  
 (SEE NOTE 5)

ALL DIMENSIONS ARE IN MILLIMETERS (INCHES)  
 UNLESS OTHERWISE SHOWN.

ILLINOIS DEPARTMENT OF TRANSPORTATION

**TRAFFIC CONTROL DETAILS  
 FOR FREEWAY  
 SHOULDER CLOSURES  
 PARTIAL RAMP CLOSURES**

SCALE: NONE  
 DATE: 05/06/2003

DRAWN BY  
 DESIGNED BY: DWS  
 CHECKED BY  
 TC-17

REVISION DATE: 04/24/03