

**INDEX OF SHEETS**

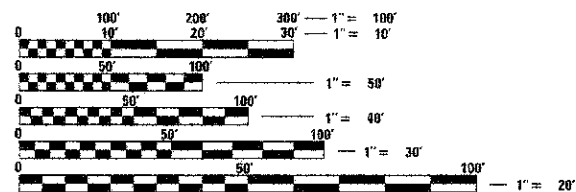
SHEET NO.	DESCRIPTION
1	COVER SHEET
2	GENERAL NOTES AND SUMMARY OF QUANTITIES
3	SCHEDULES OF QUANTITIES
4-6	EXISTING TYPICAL CROSS SECTIONS
7-9	PROPOSED TYPICAL CROSS SECTIONS
10-37 (INCL)	PLAN SHEETS
38	SIDEROAD RESURFACING DETAILS
39	ENTRANCE DETAILS
40	MAILBOX TURNOUT DETAILS
41	TRAFFIC CONTROL FOR SIDEROADS

**ILLINOIS HIGHWAY STANDARD DRAWINGS**

701011-03	OFF-ROAD MOVING OPERATIONS, 2-LANE, 2-WAY, DAYTIME ONLY
701301-04	LANE CLOSURE, 2-LANE, 2-WAY, SHORT TIME OPERATION
701306-03	LANE CLOSURE, 2-LANE, 2-WAY, SLOW MOVING OPERATIONS, DAYTIME ONLY FOR SPEEDS EQUAL TO OR GREATER THAN 45 MPH
701311-03	LANE CLOSURE, 2-LANE, 2-WAY, MOVING OPERATIONS, DAYTIME ONLY
701901-02	TRAFFIC CONTROL DEVICES
780001-03	TYPICAL PAVEMENT MARKINGS
781001-03	TYPICAL APPLICATIONS RAISED REFLECTIVE PAVEMENT MARKERS

STRUCTURAL DESIGN TRAFFIC		YEAR	2019
PV=	1,041 (94.6%)	SU=	19 (1.7%)
		MU=	41 (3.7%)
ROAD/STREET CLASSIFICATION		CLASS III	
PERCENT OF STRUCTURAL DESIGN TRAFFIC IN DESIGN LANE			
P=	55%	S=	55%
		M=	55%
TRAFFIC FACTOR		Actual TF =	0.255
		AC Type =	PG 64-22
Minimum TF = 0.5			
PG GRADE:		Level Binder =	64-22
		Surface =	64-22

AARON M. LAWSON  
 PROFESSIONAL ENGINEER  
 NO. 062-051230  
 EXPIRES 11-30-2013



FULL SIZE PLANS HAVE BEEN PREPARED USING STANDARD ENGINEERING SCALES. REDUCED SIZED PLANS WILL NOT CONFORM TO STANDARD SCALES. IN MAKING MEASUREMENTS ON REDUCED PLANS, THE ABOVE SCALES MAY BE USED.

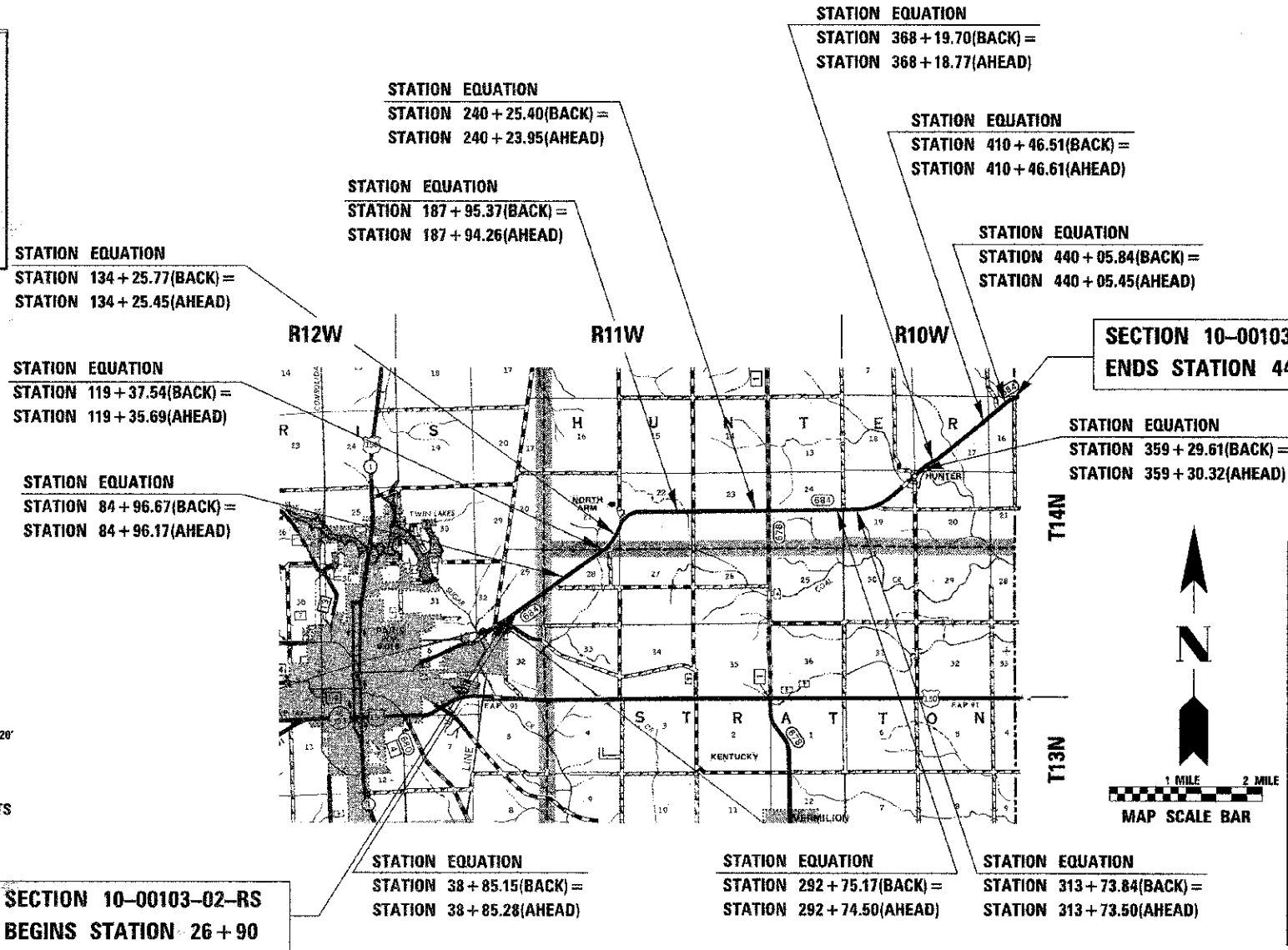
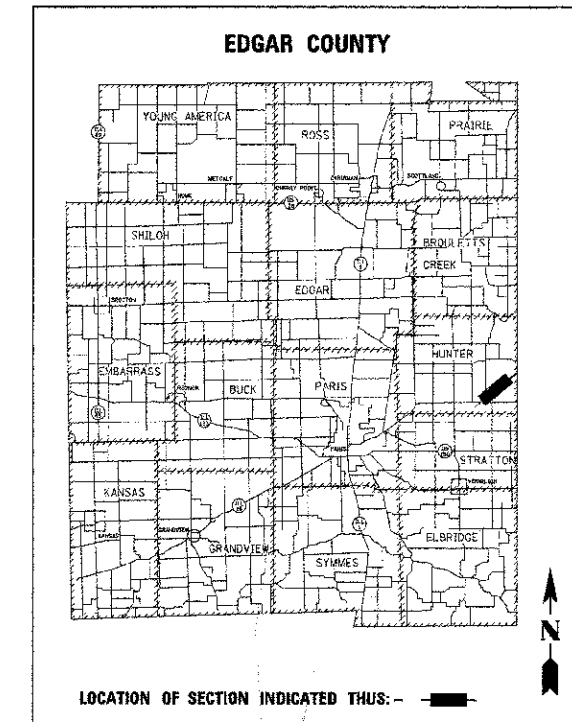
J.U.L.I.E.  
 JOINT UTILITY LOCATION INFORMATION FOR EXCAVATION  
 1-800-892-0123  
 OR 811

**SECTION 10-00103-02-RS  
 BEGINS STATION 26 + 90**

STATE OF ILLINOIS  
 DEPARTMENT OF TRANSPORTATION  
 DIVISION OF HIGHWAYS  
**PROPOSED  
 HIGHWAY PLANS**  
 FAS ROUTE 684 (CH 2) (CLINTON ROAD)  
 SECTION 10-00103-02-RS  
 PROJECT NO. RS-0684(106)  
 HMA RESURFACING  
 EDGAR COUNTY  
 FUNDING STR & TARP  
 JOB NO. C-95-323-12

ROUTE	SECTION	COUNTY	TOTAL SHEETS	SHEET NO.
FAS 684 (CH 2)	10-00103-02-RS	EDGAR	41	1

CONTRACT NO. 91471  
 C-95-323-12



**AGENCY RESPONSIBLE FOR LETTING**

APPROVED: *[Signature]* 10/11 20 12  
 EDGAR COUNTY ENGINEER

PASSED: *[Signature]* 10/11 20 12  
 DISTRICT FIVE ENGINEER OF LOCAL ROADS AND STREETS

RELEASING FOR BID  
 BASED ON LIMITED REVIEW: *[Signature]* 10/11 20 12  
 DEPUTY DIRECTOR OF HIGHWAYS, REGION THREE ENGINEER  
 STATE OF ILLINOIS  
 DEPARTMENT OF TRANSPORTATION

CONTRACT NO. 91471

GROSS LENGTH = 41,797.21 FT. = 7.916 MILE  
 NET LENGTH = 41,797.21 FT. = 7.916 MILE

ROUTE: CH 2 CLINTON RD EDGAR COUNTY  
 SECTION: 10-00103-02-RS DESCRIPTION: HMA RESURFACING 700' EAST OF CSX RR TO STATE LINE