

FEDERAL AID PROGRAM ENGINEER: CARMEN E. RAMOS, P.E. SCHAUMBURG, IL.

01-17-2025 LETTING ITEM 130

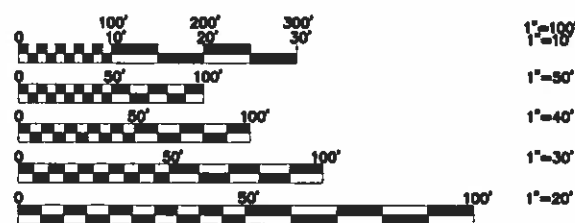
STATE OF ILLINOIS  
DEPARTMENT OF TRANSPORTATION  
**PLANS FOR PROPOSED  
FEDERAL AID HIGHWAY**  
**FAU 2759 (DES PLAINES AVENUE)**  
**FAU 1459 (26TH STREET) TO FAU 1453 (CERMAK ROAD)**  
**LED STREET LIGHTING**  
SECTION 22-00094-00-LT  
PROJECT WL3A(619)  
**VILLAGE OF NORTH RIVERSIDE**  
**COOK COUNTY**  
JOB C-91-137-23

SECTION	COUNTY	TOTAL SHEETS	SHEET NO.
22-00094-00-LT	COOK	21	1

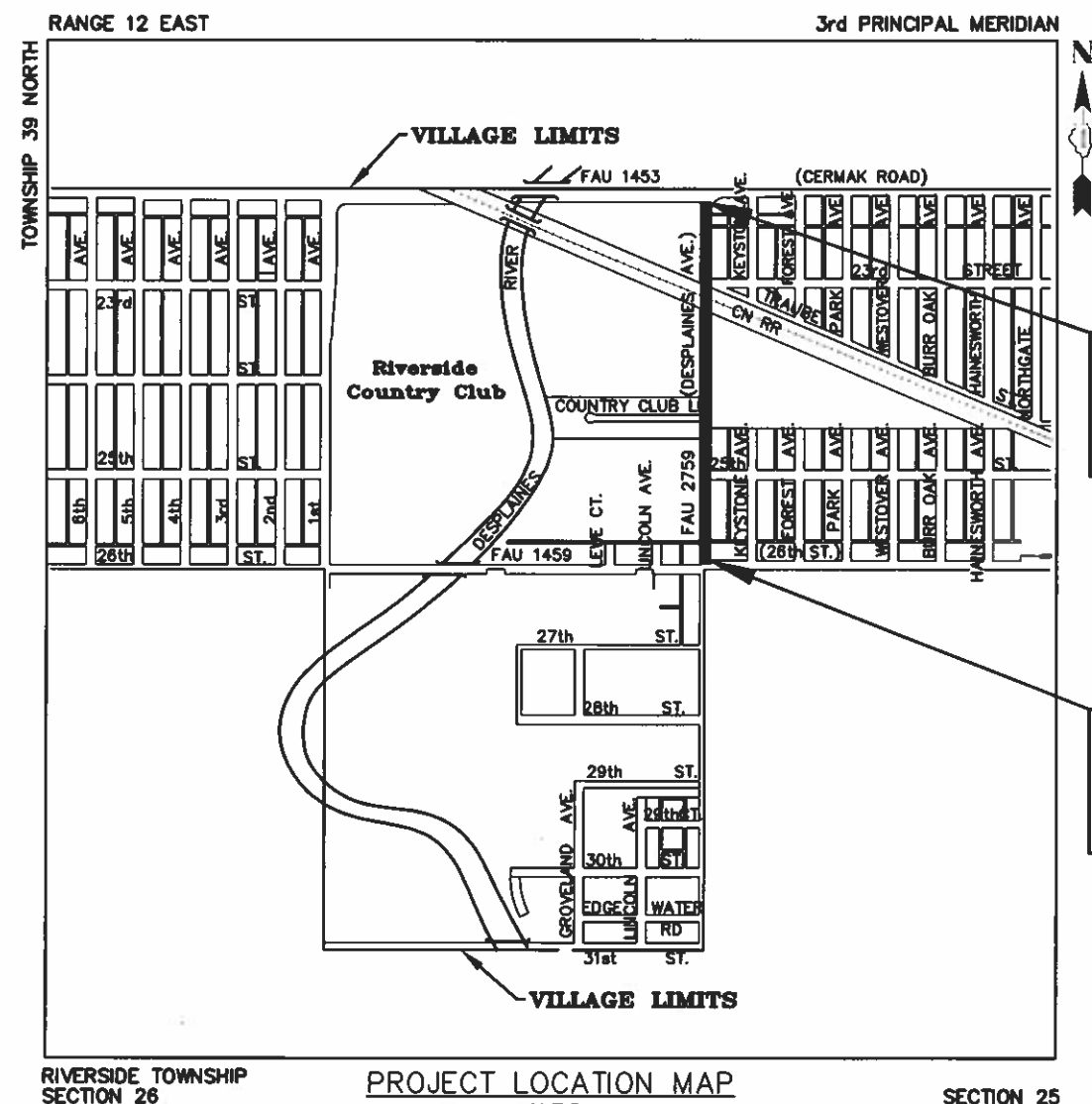
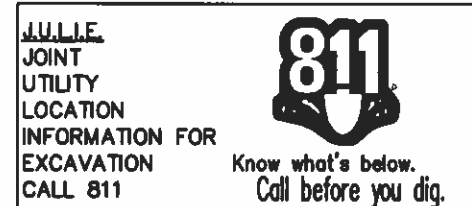
CONTRACT NO. 61K53

FOR INDEX OF SHEETS, SEE SHEET 2  
FOR LIST OF DISTRICT 1 STANDARD DETAILS, SEE SHEET 2  
FOR LIST OF INDEX OF DOT HIGHWAY STANDARDS, SEE SHEET 2

**FUNCTIONAL CLASSIFICATION**  
COLLECTOR  
**TRAFFIC DATA**  
(FAU 2759) DES PLAINES AVENUE  
ADT: 11,800 (2022)  
**POSTED SPEED LIMIT**  
(FAU 2759) DES PLAINES AVENUE = 30 MPH  
**DESIGNED SPEED LIMIT**  
(FAU 2759) DES PLAINES AVENUE = 30 MPH

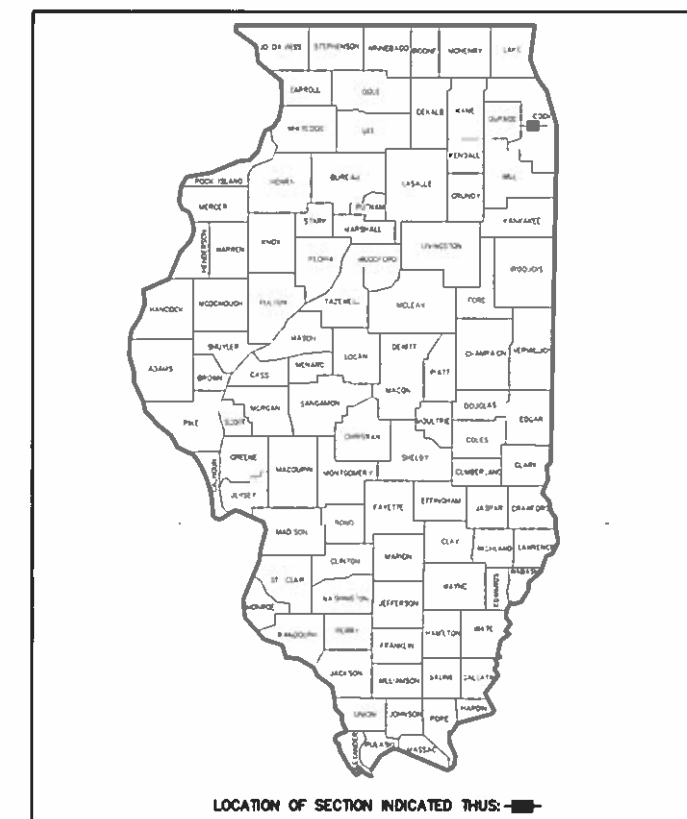


FULL SIZE PLANS HAVE BEEN PREPARED USING STANDARD ENGINEERING SCALES. REDUCED SIZED PLANS WILL NOT CONFORM TO STANDARD SCALES. IN MAKING MEASUREMENTS ON REDUCED PLANS, THE ABOVE SCALES MAY BE USED.



**LIGHTING  
PROJECT ENDS  
FAU 2759  
(DESPLAINES AVE.)  
(STA. 34+96)**

**LIGHTING  
PROJECT BEGINS  
FAU 2759  
(DESPLAINES AVE.)  
(STA. 10+86)**



STATE OF ILLINOIS  
DEPARTMENT OF TRANSPORTATION

APPROVED 07/17/24 2024  
VILLAGE OF NORTH RIVERSIDE JOSEPH MENGONI, VILLAGE PRESIDENT

PASSED NOV 15 2024  
DISTRICT 1 ENGINEER OF LOCAL ROADS & STREETS JOHN 18

RELEASING FOR BID  
BASED ON LIMITED  
REVIEW Joe Proski 2024  
REGIONAL ENGINEER

John E. Fitzgerald  
JOHN E. FITZGERALD, P.E.  
IL. P.E. NO. 062-048559  
EXPIRES 11-30-2025  
10/25/24  
DATE

SEAL

**PRINTED BY THE AUTHORITY  
OF THE STATE OF ILLINOIS**

CONTRACT NO. 61K53

— DENOTES LOCATION OF IMPROVEMENT  
GROSS LENGTH OF PROJECT = 2,410 FEET (0.46 MILES)  
NET LENGTH OF PROJECT = 2,410 FEET (0.46 MILES)

INDEX OF SHEETS		LIST OF DISTRICT 1 STANDARD DETAILS		LIST OF ILLINOIS DOT HIGHWAY STANDARDS	
1.)	<u>COVER SHEET</u> : LOCATION MAP	17.)	BE-301 LIGHT POLE FOUNDATION 40' (12.192m) TO 47 1/2' (14.478m) M.H. 15" (381mm) BOLT CIRCLE	000001-08	STANDARD SYMBOLS, ABBREVIATIONS, AND PATTERNS
2.)	INDEX OF SHEETS, LIST OF DISTRICT 1 STANDARD DETAILS, LIST OF ILLINOIS DOT HIGHWAY STANDARDS, GENERAL CONSTRUCTION NOTES, LIGHTING NOTES	18.)	BE-310 LIGHT POLE FOUNDATION OFFSET 40' (12.192m) TO 47 1/2' (14.478m) M.H. 15" (381mm) BOLT CIRCLE	701101-05	OFF-RD OPERATIONS, MULTILANE, 15' TO 24" FROM PAVEMENT EDGE
3.-5.)	SUMMARY OF QUANTITIES			701427-05	LANE CLOSURE, MULTILANE, INTERMITTENT OR MOVING OPERATION, FOR SPEEDS ≤ 40 MPH
6.-8.)	TYPICAL SECTIONS	19.)	BE-702 MISC. ELECTRICAL DETAILS, SHEET A	701601-09	URBAN LANE CLOSURE, MULTILANE, 1W OR 2W WITH NONTRAVERSABLE MEDIAN
9.-11.)	<u>LIGHTING REMOVAL AND ROADWAY &amp; PEDESTRIAN LIGHTING PLAN</u> : FAU 2759 (DES PLAINES AVENUE)	20.)	TC-10 TRAFFIC CONTROL & PROTECTION FOR SIDE ROADS, INTERSECTIONS & DRIVEWAYS	701606-10	URBAN SINGLE LANE CLOSURE, MULTILANE, 2W WITH MOUNTABLE MEDIAN
12.)	LIGHT POLE, UNIT DUCT AND CCONDUCTOR INFORMATION CHARTS - FAU 2759 (DES PLAINES AVENUE)	21.)	TC-22 ARTERIAL ROAD INFORMATION SIGN	701701-10	URBAN LANE CLOSURE, MULTILANE INTERSECTION
13.)	ROADWAY AND PEDESTRIAN LIGHTING STANDARD DETAILS			701801-06	SIDEWALK, CORNER OR CROSSWALK CLOSURE
14.)	ROADWAY AND PEDESTRIAN LIGHTING CONSTRUCTION DETAILS			701901-10	TRAFFIC CONTROL DEVICES
15.)	ROADWAY AND PEDESTRIAN LIGHTING WRING DETAILS			836001-05	LIGHT POLE FOUNDATION
16.)	SINGLE LINE DIAGRAM				
17.-21.)	DISTRICT 1 STANDARD DETAILS (SEE LIST AT RIGHT)				

GENERAL CONSTRUCTION NOTES ROADWAY STREET LIGHTING		LIGHTING NOTES	
<u>SPECIFICATIONS</u> THE JANUARY 1, 2022 EDITION OF THE "STANDARD SPECIFICATIONS FOR ROAD AND BRIDGE CONSTRUCTION", THE JANUARY 1, 2025 EDITION OF THE "SUPPLEMENTAL SPECIFICATIONS AND RECURRING SPECIAL PROVISIONS", PREPARED BY THE ILLINOIS DEPARTMENT OF TRANSPORTATION AND THE 11TH EDITION DATED DECEMBER 2023 OF THE "MANUAL OF UNIFORM TRAFFIC CONTROL DEVICES" SHALL GOVERN ALL WORK ASSOCIATED WITH THIS PROJECT. <u>NOTIFICATION OF PUBLIC UTILITIES</u> PRIOR TO STARTING CONSTRUCTION, THE CONTRACTOR SHALL NOTIFY THE OFFICIALS OF THE PUBLIC WORKS DEPARTMENT OF THE LOCAL MUNICIPALITY, J.U.L.I.E. AT 1-800-892-0123 OR 811, AND OTHER PUBLIC AND PRIVATE UTILITIES SO THAT ARRANGEMENTS CAN BE MADE TO LOCATE THEIR VARIOUS FACILITIES WITHIN THE LIMITS OF CONSTRUCTION UNDER THIS CONTRACT, AS WELL AS TO PROVIDE ADEQUATE PROTECTION AND INSPECTION THERETO. IT SHALL BE THIS CONTRACTOR'S RESPONSIBILITY TO DETERMINE THE ACTUAL LOCATION OF ALL SUCH FACILITIES IN THE FIELD. <u>EXCAVATED MATERIALS</u> THE WASTE FROM THE TRENCH AND/OR FOUNDATION EXCAVATION INCLUDED UNDER THIS CONTRACT SHALL BE DISPOSED OF OFF SITE BY THE CONTRACTOR, UNLESS OTHERWISE DIRECTED BY THE ENGINEER. THE CONTRACT UNIT PRICE FOR "TRENCH AND BACKFILL" AND "CONCRETE FOUNDATION" OF THE SIZE INDICATED ON THE PLANS, SHALL INCLUDE THE DISPOSAL OF WASTE MATERIALS AS MAY OR MAY NOT BE DESIGNATED ABOVE, THEREFORE, AS A PROVISION OF THIS CONTRACT, THE CONTRACTOR WILL BE REQUIRED TO DISPOSE OF ALL SURPLUS MATERIALS OFF SITE AS WORK PROGRESSES. THE TEMPORARY STOCKPILING OF MATERIAL ON SITE WILL NOT BE ALLOWED. <u>TREES AND BRANCHES</u> WHERE OVERHANGING BRANCHES INTERFERE WITH OPERATIONS OF CONSTRUCTION, SAID BRANCHES SHALL BE TRIMMED AND SEALED IN ACCORDANCE WITH ARTICLE 253.09 OF THE "STANDARD SPECIFICATIONS FOR ROAD AND BRIDGE CONSTRUCTION", AND WILL BE PAID FOR IN ACCORDANCE WITH THE SPECIFICATIONS. <u>SAWING EXISTING IMPROVEMENTS</u> ALL PERMANENT TYPE PAVEMENTS OR OTHER PERMANENT IMPROVEMENTS WHICH ABUT THE PROPOSED IMPROVEMENT AND MUST BE REMOVED, SHALL BE SAWED AS DIRECTED PRIOR TO REMOVAL. ALL ITEMS SO REMOVED SHALL BE REPLACED WITH SIMILAR CONSTRUCTION MATERIALS TO THEIR ORIGINAL CONDITION OR BETTER. EXISTING DRIVEWAY PAVEMENT AND SIDEWALK TO REMAIN IN PLACE SHALL BE SAWCUT TO PROVIDE A NEAT VERTICAL FACE BETWEEN THE PROPOSED AND THE EXISTING. <u>PROJECT SAFETY</u> THE CONTRACTOR SHALL COMPLY WITH AND OBSERVE THE RULES AND REGULATIONS OF O.S.H.A. AND APPROPRIATE AUTHORITIES REGARDING SAFETY PROVISIONS. THE CONTRACTOR, ENGINEER, AND OWNER SHALL EACH BE RESPONSIBLE FOR THEIR OWN RESPECTIVE AGENTS AND EMPLOYEES. THE ENGINEER AND OWNER ARE NOT RESPONSIBLE FOR THE CONSTRUCTION MEANS, METHODS, TECHNIQUES, SEQUENCES OR PROCEDURES, TIME OF PERFORMANCE, PROGRAMS, OR FOR ANY SAFETY PRECAUTIONS USED BY THE CONTRACTOR. THE CONTRACTOR IS SOLELY RESPONSIBLE FOR EXECUTION OF HIS WORK IN ACCORDANCE WITH THE DOCUMENTS AND SPECIFICATIONS.		<ol style="list-style-type: none"><li>1. THE CONTRACTOR SHALL VERIFY ALL OF THE INFORMATION SHOWN IN THE CONTRACT PLANS WHICH AFFECT THE WORK UNDER THIS CONTRACT.</li><li>2. IT IS THE RESPONSIBILITY OF THE CONTRACTOR TO ASCERTAIN EXISTING FILED CONDITIONS BEFORE BIDDING ON THE PROJECT.</li><li>3. THE ENGINEER RESERVES THE RIGHT TO ADJUST THE LOCATIONS OF LIGHT POLES, CONDUIT PUSHES, TRENCH LINES, AND OTHER APPURTENANCES TO NEW LOCATIONS DEPENDING UPON THE LOCATION OF OTHER FACILITIES THAT MAY CONFLICT WITH THE NEW LIGHTING SYSTEM.</li><li>4. ALL LUMINAIRES SHALL BE ORIENTED WITH THE OPTICS PERPENDICULAR TO THE ROADWAY UNLESS OTHERWISE INDICATED OR DIRECTED BY THE ENGINEER.</li><li>5. CONDUIT DUCTS SHALL BE INSTALLED AT A MINIMUM DEPTH OF 30" BELOW GRADE AND POSITIONED IN THE FIELD TO AVOID CONFLICT WITH ROADWAY UNDERDRAINS AND OTHER EXISTING AND PROPOSED UTILITIES. THE CONTRACTOR SHALL INCREASE DEPTH OF UNIT DUCT AND CONDUIT AS REQUIRED. THE CONTRACTOR SHALL COORDINATE RACEWAY DEPTH WITH THE ELECTRICAL DETAILS AND THE ENGINEER.</li><li>6. WHERE THE CONTRACTOR'S EXCAVATION MEETS AN OBSTRUCTION, THE CONTRACTOR SHALL NOTIFY THE ENGINEER FOR DIRECTION IN WRITING PRIOR TO EXCAVATION. IF DAMAGE OCCURS, THE CONTRACTOR SHALL RESTORE THE DAMAGE TO EXISTING SYSTEMS OR UTILITIES AND REMOVE EXISTING OBSTRUCTIONS AND FOUNDATIONS TO THE SATISFACTION OF THE ENGINEER.</li><li>7. ALL THE FOUNDATIONS SHALL INCLUDE A GROUND ROD PER STANDARD DETAIL BE-300 AND STANDARD SPECIFICATION SECTION 806..</li><li>8. POLE SETBACKS SHALL NOT BE LESS THAN 3 FEET FROM FACE OF CURB (FOC) TO CENTER OF POLE.</li><li>9. ALL SIDEWALK REMOVAL AND REPLACEMENT SHALL BE SELECTED BY THE ENGINEER.</li></ol>	

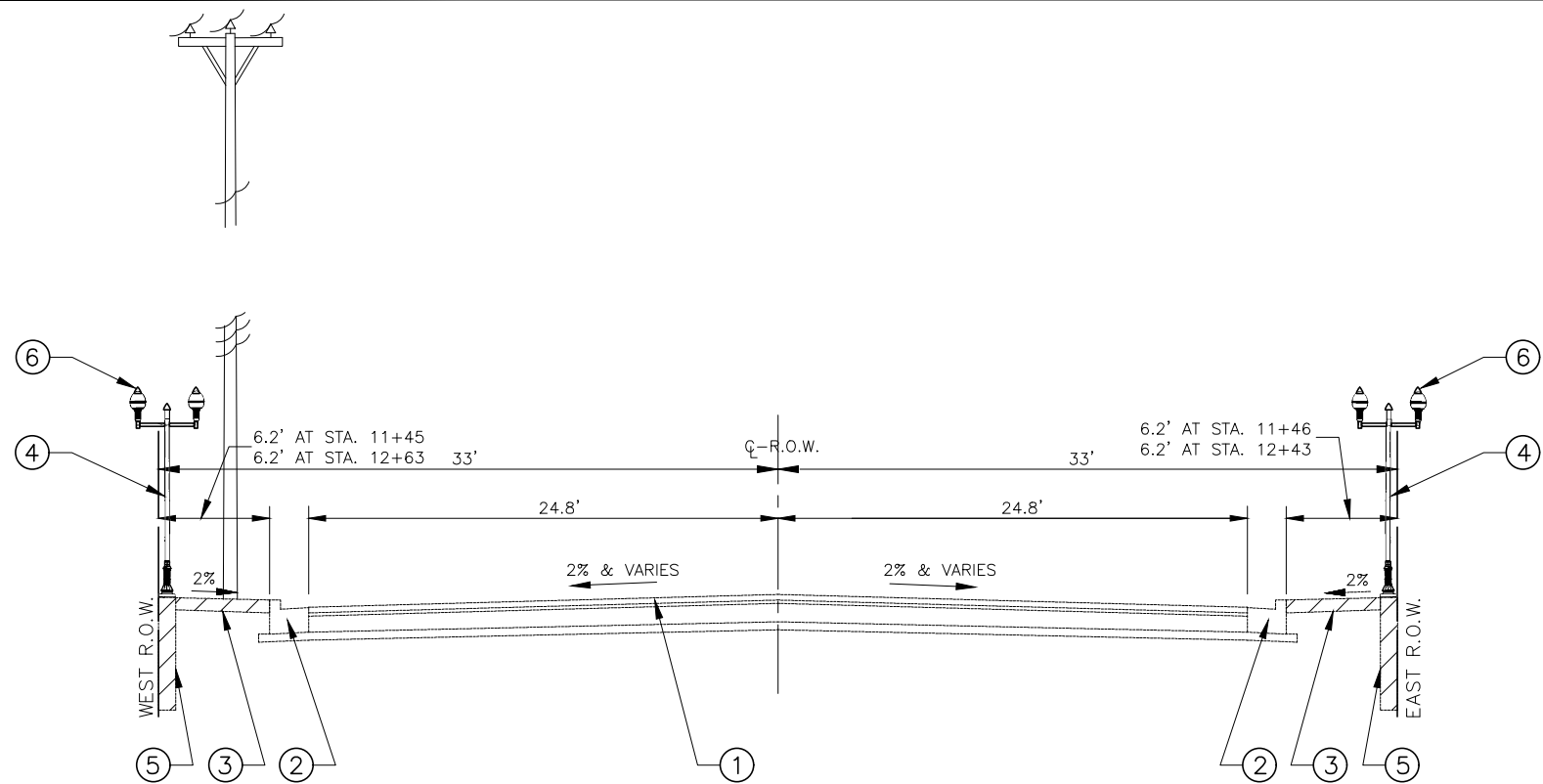
<div>RAILROAD FLAGGERS GENERAL NOTE</div> <div>IT IS THE CONTRACTOR'S SOLE RESPONSIBILITY TO COORDINATE WITH THE CHICAGO, CENTRAL AND PACIFIC RAILROAD (CC&amp;P RR) UNDER THE PARENT COMPANY OF THE CANADIAN NATIONAL RAILROAD (CN RR) WHENEVER CONSTRUCTION ACTIVITY IS WITHIN 25 FEET OF THE RAILROAD ROW. THE CONTRACTOR SHALL RETAIN FLAGMEN EMPLOYED AND DESIGNATED BY THE CANADIAN NATIONAL RAILROAD (CN RR) TO MONITOR ON-COMING TRAIN TRAFFIC AND ADVISE CONTRACTOR PERSONNEL WHEN ACTIVITY ON OR NEAR THE RAILROAD RIGHT-OF-WAY MAY PROCEED. THIS ITEM WILL BE PAID FOR ACCORDING TO ARTICLE 107.12 AND WILL BE REIMBURSED ACCORDING TO ARTICLE 109.05</div>																								
FILE NAME (FAU 2759) DES PLAINES AVENUE (FAU 1459) 26TH STREET TO (FAU 1453) CERMAK ROAD LED STREET LIGHTING #20072		USER NAME =	DESIGNED — JEF	REVISED — 6-11-24	STATE OF ILLINOIS DEPARTMENT OF TRANSPORTATION					INDEX OF SHEETS, LIST OF DISTRICT 1 STANDARD DETAILS, LIST OF ILLINOIS DOT HIGHWAY STANDARDS, GENERAL CONSTRUCTION NOTES, LIGHTING NOTES					F.A.U. RTE.	SECTION		COUNTY	TOTAL SHEETS	SHEET NO.				
			DRAWN — JFP	REVISED — 7-9-24											2759		22-00094-00-LT		COOK	21	2			
		PLOT SCALE =	CHECKED — THK	REVISED — 7-11-24											CONTRACT NO. 61K53									
		PLOT DATE =	DATE — 2-22-24	REVISED — 10-25-24											SCALE: NONE		SHEET NO.	OF	SHEETS	STA.	TO	STA.	FED. ROAD DIST. NO.	ILLINOIS

				80% Fed 20% Local	
Specialty Item	Code Number	Description	Unit	Total Quantity	Construction Code Roadway 0021
*	20101300	TREE PRUNING (1 TO 10 INCH DIAMETER)	EACH	5	5
*	20101350	TREE PRUNING (OVER 10 INCH DIAMETER)	EACH	5	5
	21101615	TOPSOIL FURNISH AND PLACE, 4"	SQ YD	285	285
	25000400	NITROGEN FERTILIZER NUTRIENT	POUND	4	4
	25000500	PHOSPHORUS FERTILIZER NUTRIENT	POUND	4	4
	25000600	POTASSIUM FERTILIZER NUTRIENT	POUND	4	4
	25200110	SODDING, SALT TOLERANT	SQ YD	285	285
	25200200	SUPPLEMENTAL WATERING	UNIT	25	25
*	42400200	PORTLAND CEMENT CONCRETE SIDEWALK, 5"	SQ FT	1,000	1,000
*	42400800	DETECTABLE WARNINGS	SQ FT	20	20
*	44000600	SIDEWALK REMOVAL	SQ FT	1,350	1,350
	67100100	MOBILIZATION	L.SUM	1	1
	70102625	TRAFFIC CONTROL AND PROTECTION, STANDARD 701606	L.SUM	1	1
	70102630	TRAFFIC CONTROL AND PROTECTION, STANDARD 701601	L.SUM	1	1
	70102635	TRAFFIC CONTROL AND PROTECTION, STANDARD 701701	L.SUM	1	1
	70102640	TRAFFIC CONTROL AND PROTECTION, STANDARD 701801	L.SUM	1	1
FILE NAME FAU 2759 (DES PLAINES AVENUE) FAU 1459 (26TH STREET) TO FAU 1453 (CERMAK ROAD) LED STREET LIGHTING				SUMMARY OF QUANTITIES	
USER NAME =				SCALE: NONE	SHEET NO. OF SHEETS STA. TO STA.
DESIGNED - JEF				F.A.U. SECTION COUNTY TOTAL SHEETS SHEET NO.	
DRAWN - JFP				2759 22-00094-00-LT COOK 21 3	
CHECKED - THK				CONTRACT NO. 61K53	
DATE - 2-22-24				FED. ROAD DIST. NO. ILLINOIS FED. AID PROJECT WL3A(619)	
REVISED - 5-22-24					
REVISED - 6-11-24					
REVISED - 7-9-24					
REVISED - 10-25-24					
STATE OF ILLINOIS DEPARTMENT OF TRANSPORTATION					
#20072					

				80% Fed 20% Local	
Specialty Item	Code Number	Description	Unit	Total Quantity	Construction Code Roadway 0021
	81028200	UNDERGROUND CONDUIT, GALVANIZED STEEL, 2" DIA.	FOOT	65	65
	81702400	ELECTRICAL CABLE IN CONDUIT, 600V (XLP-TYPE USE), 3-1/C NO. 2	FOOT	65	65
	82500360	LIGHTING CONTROLLER, BASE MOUNTED, 480 VOLT, 100AMP	EACH	1	1
	83600200	LIGHT POLE FOUNDATION, 24" DIAMETER	FOOT	310	310
	83600352	LIGHT POLE FOUNDATION, METAL, 11 1/2" Bolt Circle, 8' 5/8" x 6'	EACH	7	7
	84200500	REMOVAL OF LIGHTING UNIT, SALVAGE	EACH	36	36
	84200804	REMOVAL OF POLE FOUNDATION	EACH	36	36
	84500110	REMOVAL OF LIGHTING CONTROLLER	EACH	1	1
	84500120	REMOVAL OF ELECTRICAL SERVICE INSTALLATION	EACH	1	1
	84500130	REMOVAL OF LIGHTING CONTROLLER FOUNDATION	EACH	1	1
	89502300	REMOVE ELECTRIC CABLE FROM CONDUIT	FOOT	270	270
	X1400282	POLYETHYLENE DUCT, 1-1/4" DIA.	FOOT	50	50
	XX009688	ELECTRICAL CABLE IN CONDUIT, 600V (XLP-TYPE USE), 3-1/C NO. 10, 3-1/C NO. 6, 1/C NO. 8 GROUND	FOOT	270	270
	XX009691	UNIT DUCT, 600V, 3-1/C NO. 8, 3-1/C NO. 1, 1/C NO. 6 GROUND, (XLP-TYPE USE), 1 1/2" DIA. POLYETHYLENE, DIRECTIONALLY BORED	FOOT	1,630	1,630
<div><div>FILE NAME FAU 2759 (DES PLAINES AVENUE) FAU 1459 (25TH STREET) TO FAU 1453 (CERMAK ROAD) LED STREET LIGHTING</div><div>#20072</div></div> <div><div>USER NAME =</div><div>PLOT SCALE =</div><div>PLOT DATE =</div></div> <div><div>DESIGNED - JEF</div><div>DRAWN - JFP</div><div>CHECKED - THK</div><div>DATE - 2-22-24</div></div> <div><div>REVISED - 5-22-24</div><div>REVISED - 6-11-24</div><div>REVISED - 7-9-24</div><div>REVISED - 10-25-24</div></div> <div>STATE OF ILLINOIS DEPARTMENT OF TRANSPORTATION</div> <div>SUMMARY OF QUANTITIES SCALE: NONE    SHEET NO.    OF    SHEETS    STA.    TO STA.</div> <div><div>F.A.U. RTE. 2759</div><div>SECTION 22-00094-00-LT</div><div>COUNTY COOK</div><div>TOTAL SHEETS 21</div><div>SHEET NO. 4</div><div>CONTRACT NO. 61K53</div><div>FED. ROAD DIST. NO.    ILLINOIS FED. AID PROJECT    WLJA(619)</div></div>					

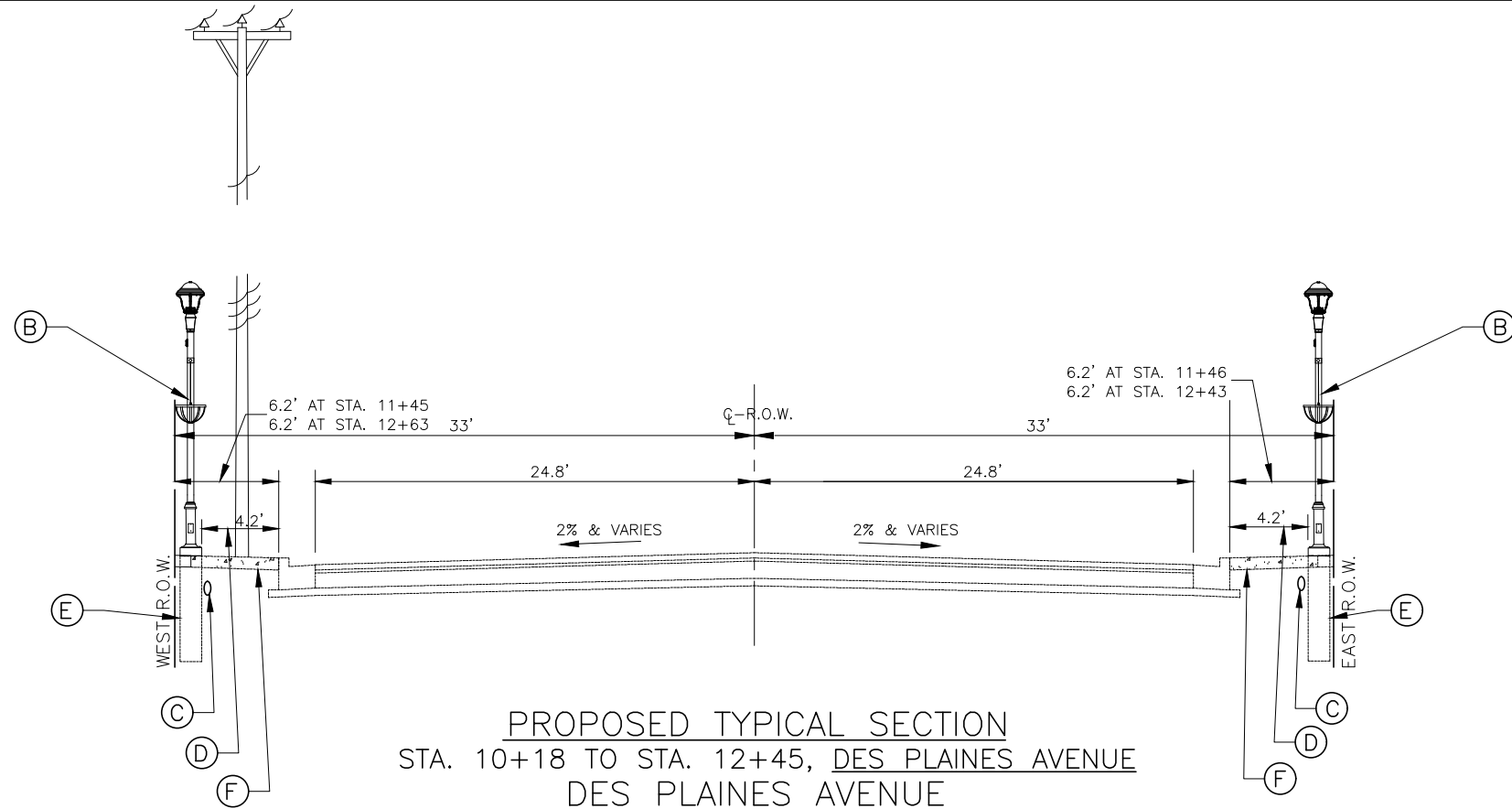
				80% Fed 20% Local	
Specialty Item	Code Number	Description	Unit	Total Quantity	Construction Code Roadway 0021
*	XX009692	UNIT DUCT, 600V, 3-1/C NO. 10, 3-1/C NO. 4, 1/C NO. 8 GROUND, (XLP-TYPE USE), 1 1/2" DIA. POLYETHYLENE, DIRECTIONALLY BORED	FOOT	500	500
	XX009693	UNIT DUCT, 600V, 3-1/C NO. 10, 3-1/C NO. 6, 1/C NO. 8 GROUND, (XLP-TYPE USE), 1 1/2" DIA. POLYETHYLENE, DIRECTIONALLY BORED	FOOT	1,460	1,460
	XX009694	UNIT DUCT, 600V, 3-1/C NO. 10, 3-1/C NO. 2, 1/C NO. 8 GROUND, (XLP-TYPE USE), 1 1/2" DIA. POLYETHYLENE, DIRECTIONALLY BORED	FOOT	1,540	1,540
	X1700067	STAMPED COLORED PORTLAND CEMENT CONCRETE SIDEWALK, 5"	SQ FT	350	350
	X8050135	SERVICE INSTALLATION, TYPE C (MODIFIED)	EACH	1	1
	X8130125	REMOVE EXISTING JUNCTION BOX	EACH	1	1
	X8360215	LIGHT POLE FOUNDATION, 24" DIAMETER, OFFSET	EACH	30	30
	X8380084	BREAKAWAY DEVICE, COUPLING	EACH	34	34
	XX008068	LUMINAIRE INSTALLATION, TYPE 1	EACH	27	27
	XX008069	LUMINAIRE INSTALLATION, TYPE 2	EACH	27	27
	XX009148	LUMINAIRE INSTALLATION, TYPE 3	EACH	18	18
	XX009377	DECORATIVE LIGHT POLE, TYPE A	EACH	27	27
	XX009378	DECORATIVE LIGHT POLE, TYPE B	EACH	18	18
	Z0030850	TEMPORARY INFORMATION SIGNING	SQ FT	57	57
	Z0048665	RAILROAD PROTECTIVE LIABILITY INSURANCE	L.SUM	1	1

FILE NAME FAU 2759 (DES PLAINES AVENUE) FAU 1459 (26TH STREET) TO FAU 1453 (CERMAK ROAD) LED STREET LIGHTING #Z0072	USER NAME =	DESIGNED -- JEF	REVISED -- 6-11-24	STATE OF ILLINOIS DEPARTMENT OF TRANSPORTATION	SUMMARY OF QUANTITIES					F.A.U.	SECTION	COUNTY	TOTAL SHEETS	SHEET NO.
		DRAWN -- JFP	REVISED -- 7-9-24							2759	22-00094-00-LT	COOK	21	5
	PLOT SCALE =	CHECKED -- THK	REVISED -- 7-17-24		CONTRACT NO. 61K53									
	PLOT DATE =	DATE -- 2-22-24	REVISED -- 10-25-24		SCALE: NONE	SHEET NO.	OF	SHEETS	STA.	TO STA.				
					FED. ROAD DIST. NO. 142-2025 (FED. AID PROJECT) FA 3A (619)									



EXISTING TYPICAL SECTION  
STA. 10+18 TO STA. 12+45, DES PLAINES AVENUE

- EXISTING LEGEND**
- ① EXISTING 3" HOT-MIX ASPHALT SURFACE COURSE OVER 8" PORTLAND CEMENT CONCRETE BASE TO REMAIN
  - ② EXISTING COMBINATION CONCRETE CURB AND GUTTER, TYPE B-6.12 TO REMAIN
  - ③ PORTLAND CEMENT SIDEWALK, STAMPED PORTLAND CEMENT CONCRETE SIDEWALK, AND GRASS PARKWAY TO REMAIN (ACCEPT AT EXCAVATIONS FOR UNDERGROUND ELECTRICAL WORK)
  - ④ EXISTING PEDESTRIAN LIGHT STANDARD TO BE REMOVED
  - ⑤ EXISTING POLE FOUNDATION TO REMOVED
  - ⑥ EXISTING MAST ARM AND LUMINAIRE THAT ENCROACH OUTSIDE OF RIGHT-OF-WAY TO BE REMOVED BY OTHERS (8-TOTAL)



PROPOSED TYPICAL SECTION  
STA. 10+18 TO STA. 12+45, DES PLAINES AVENUE  
DES PLAINES AVENUE

- PROPOSED LEGEND**
- Ⓐ PROPOSED DECORATIVE LED LIGHTING STANDARD, TYPE B WITH PLANTER BASKET AND FESTOON OUTLETS MOUNTED ON NEW CONCRETE FOUNDATION (SEE DETAILS ON SHEET 13)
  - Ⓑ PROPOSED DECORATIVE LED LIGHTING STANDARD, TYPE A WITH BANNER ARMS AND FESTOON OUTLETS, MOUNTED ON NEW CONCRETE FOUNDATION (SEE DETAILS ON SHEET 13)
  - Ⓒ PROPOSED UNIT DUCT WITH CABLE OR REMOVE EXISTING ELECTRIC CABLE FROM EXISTING UNIT DUCT AND INSTALL NEW ELECTRIC CABLE IN EXISTING UNIT DUCT
  - Ⓓ PROVIDE A MINIMUM OF 48" CLEARANCE
  - Ⓔ PROVIDE 8-5/8"x6' METAL FOUNDATION
  - Ⓕ PROPOSED PORTLAND CEMENT CONCRETE SIDEWALK, STAMPED PORTLAND CEMENT CONCRETE SIDEWALK AND GRASS PARKWAY RESTORATION AT ELECTRICAL EXCAVATIONS.

FILE NAME <b>FAU 2759 (DES PLAINES AVENUE)</b> FAU 1459 (26TH STREET) TO FAU 1453 (CERMAK ROAD) LED STREET LIGHTING #20072	USER NAME =	DESIGNED - JEF	REVISED - 6-11-24
		DRAWN - JFP	REVISED - 7-9-24
	PLOT SCALE =	CHECKED - THK	REVISED - 7-17-24
	PLOT DATE =	DATE - 2-22-24	REVISED - 10-25-24

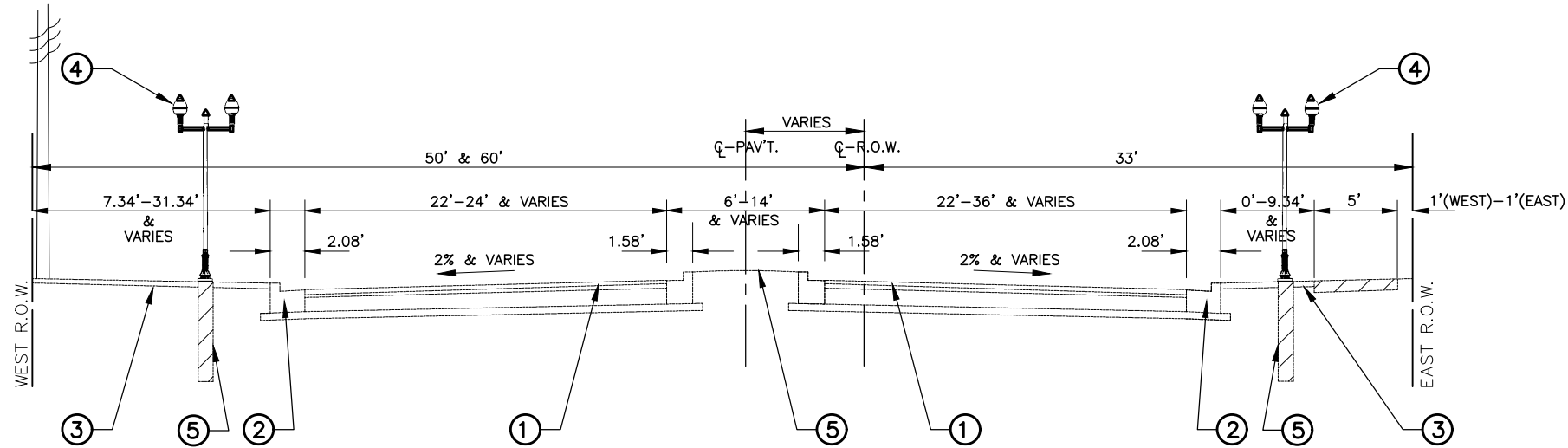
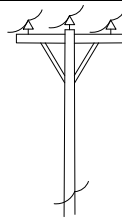
**STATE OF ILLINOIS  
DEPARTMENT OF TRANSPORTATION**

**TYPICAL SECTIONS**

SCALE: 1"=10' SHEET NO. OF SHEETS STA. TO STA.

F.A.U. RTE.	SECTION	COUNTY	TOTAL SHEETS	SHEET NO.
2759	22-00094-00-LT	COOK	21	6
CONTRACT NO. 61K53				
FED. ROAD DIST. NO. ILLINOIS FED. AID PROJECT WL3A(619)				

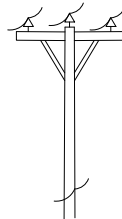




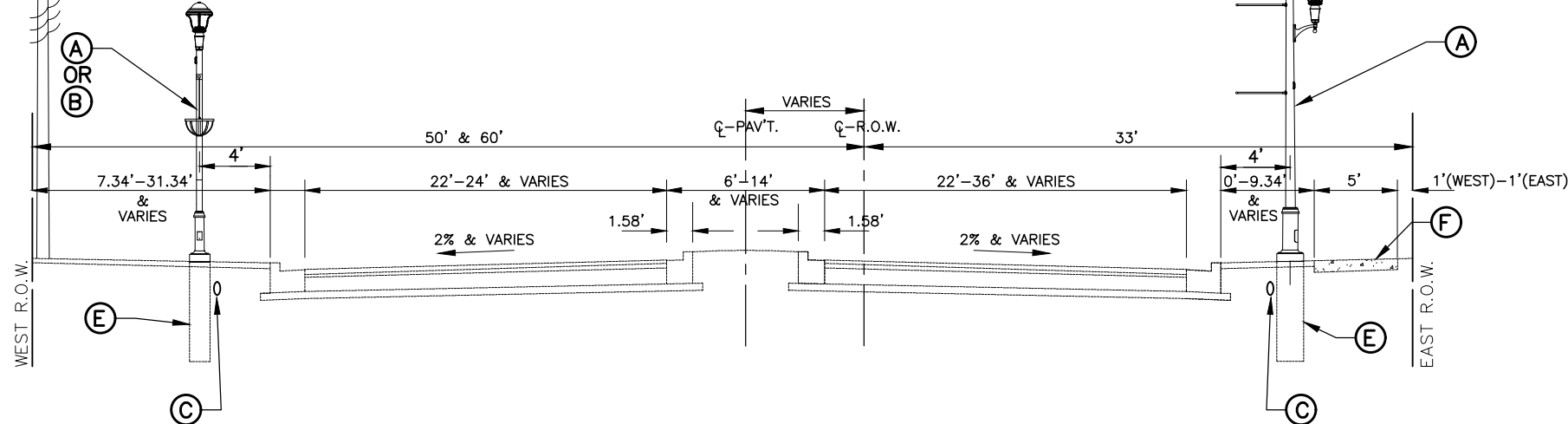
EXISTING TYPICAL SECTION  
STA. 25+77 TO STA. 35+65, DES PLAINES AVENUE

#### EXISTING LEGEND

- ① EXISTING 3" HOT-MIX ASPHALT SURFACE COURSE OVER 8" PORTLAND CEMENT CONCRETE BASE TO REMAIN
- ② EXISTING COMBINATION CONCRETE CURB AND GUTTER, TYPE B-6.12 TO REMAIN
- ③ PORTLAND CEMENT SIDEWALK, STAMPED PORTLAND CEMENT CONCRETE SIDEWALK, AND GRASS PARKWAY TO REMAIN (ACCEPT AT EXCAVATIONS FOR UNDERGROUND ELECTRICAL WORK)
- ④ EXISTING PEDESTRIAN LIGHT STANDARD TO BE REMOVED
- ⑤ EXISTING POLE FOUNDATION TO REMOVED
- ⑥ EXISTING MAST ARM AND LUMINAIRE THAT ENCROACH OUTSIDE OF RIGHT-OF-WAY TO BE REMOVED BY OTHERS (8-TOTAL)



SEE ROADWAY AND  
PEDESTRIAN LIGHTING  
PLAN SHEETS



PROPOSED TYPICAL SECTION  
STA. 25+77 TO STA. 35+65, DES PLAINES AVENUE  
DES PLAINES AVENUE

#### PROPOSED LEGEND

- Ⓐ PROPOSED DECORATIVE LED LIGHTING STANDARD, TYPE B WITH PLANTER BASKET AND FESTOON OUTLETS MOUNTED ON NEW CONCRETE FOUNDATION (SEE DETAILS ON SHEET 13)
- Ⓑ PROPOSED DECORATIVE LED LIGHTING STANDARD, TYPE A WITH BANNER ARMS AND FESTOON OUTLETS, MOUNTED ON NEW CONCRETE FOUNDATION (SEE DETAILS ON SHEET 13)
- Ⓒ PROPOSED UNIT DUCT WITH CABLE OR REMOVE EXISTING ELECTRIC CABLE FROM EXISTING UNIT DUCT AND INSTALL NEW ELECTRIC CABLE IN EXISTING UNIT DUCT
- Ⓓ PROVIDE A MINIMUM OF 48" CLEARANCE
- Ⓔ PROVIDE 24" CONCRETE FOUNDATION
- Ⓕ PROPOSED PORTLAND CEMENT CONCRETE SIDEWALK, STAMPED PORTLAND CEMENT CONCRETE SIDEWALK AND GRASS PARKWAY RESTORATION AT ELECTRICAL EXCAVATIONS.

FILE NAME <b>FAU 2759 (DES PLAINES AVENUE)</b> FAU 1459 (26TH STREET) TO FAU 1453 (CERMAK ROAD) LED STREET LIGHTING	USER NAME =	DESIGNED — JEF	REVISED — 5-22-24
		DRAWN — JFP	REVISED — 6-11-24
	PLOT SCALE =	CHECKED — THK	REVISED — 7-9-24
	PLOT DATE =	DATE — 2-22-24	REVISED — 7-17-24

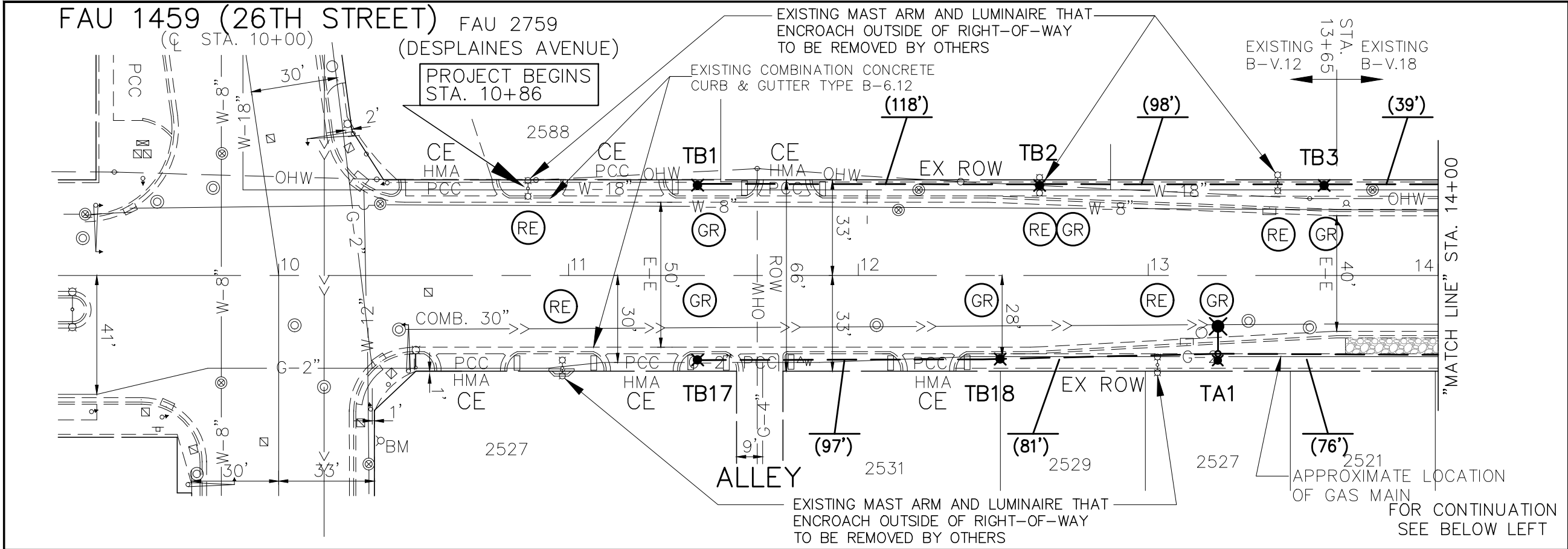
STATE OF ILLINOIS  
DEPARTMENT OF TRANSPORTATION

#### TYPICAL SECTIONS

SCALE: NONE SHEET NO. OF SHEETS STA. TO STA.

F.A.U. RTE.	SECTION	COUNTY	TOTAL SHEETS	SHEET NO.
2759	22-00094-00-LT	COOK	21	8
CONTRACT NO. 61K53				
FED. ROAD DIST. NO. ILLINOIS FED. AID PROJECT WL3A(619)				

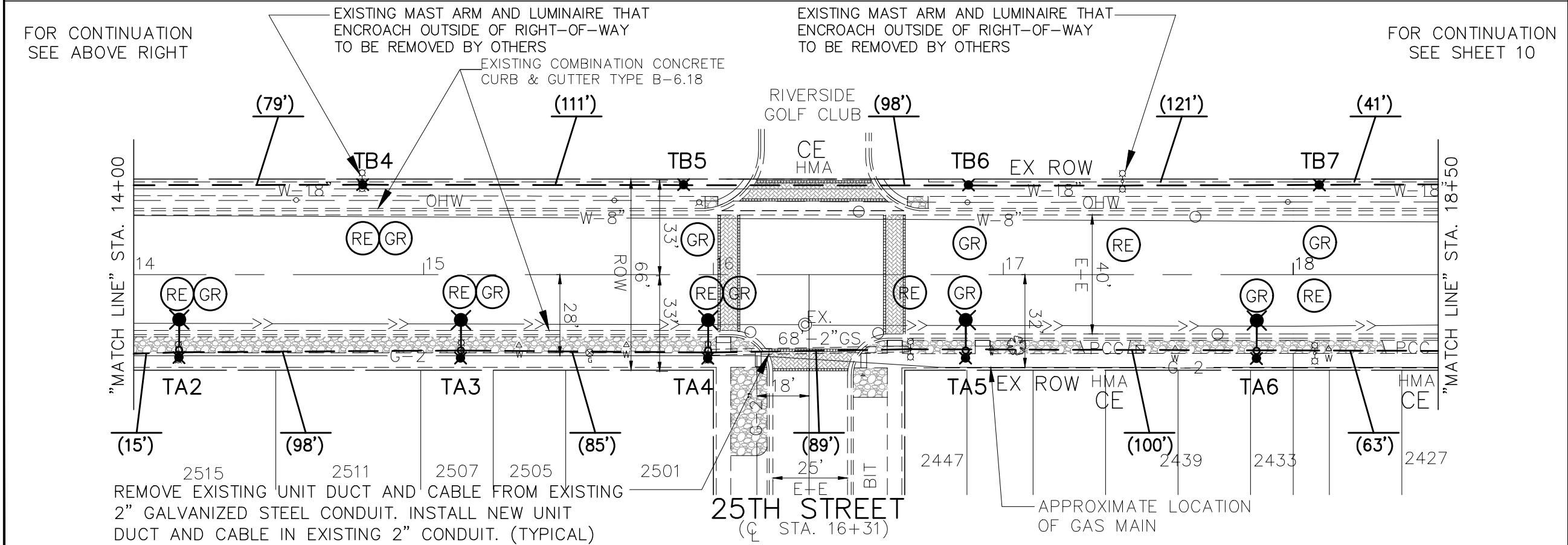




**LEGEND**

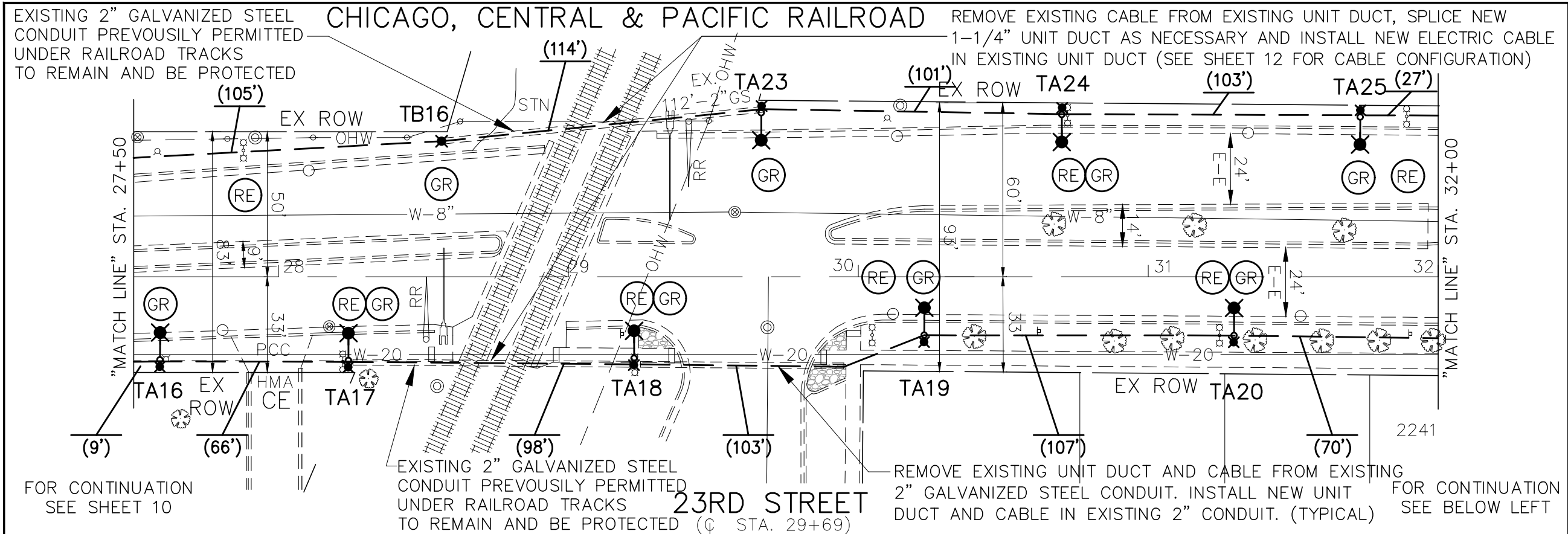
- (RE) REMOVE EXISTING PEDESTRIAN LIGHT STANDARD AND FOUNDATION
- (GR) PROPOSED DECORATIVE LED LIGHTING STANDARD, TYPE B MOUNTED ON NEW CONCRETE FOUNDATION OR METAL FOUNDATION. (SEE SHEET 13 FOR DETAILS AND METAL FOUNDATION NOTE BELOW)
- (TA) PROPOSED DECORATIVE LED LIGHTING STANDARD, TYPE A WITH BANNER ARMS, MOUNTED ON NEW CONCRETE FOUNDATION. (SEE DETAILS ON SHEET 13)
- (140') SEE SHEET 12 FOR UNIT DUCT SIZE, LENGTH AND CABLE CONFIGURATION
- (GR) GROUND ROD TO BE INSTALLED
- CE COMMERCIAL ENTRANCE
- PE PRIVATE ENTRANCE
- EXISTING DECORATIVE CROSSWALK
- EXISTING DECORATIVE STAMPED CONCRETE

PROVIDE 8-5/8"x6' METAL FOUNDATION FOR POLES: TB1, TB2, TB3, TB17 AND TB18



FILE NAME <b>FAU 2759 (DES PLAINES AVENUE)</b> <b>FAU 1459 (26TH STREET) TO FAU 1453 (CERMAK ROAD)</b> <b>LED STREET LIGHTING</b> <b>#20072</b>	USER NAME =	DESIGNED — THK	REVISED — 6-11-24	STATE OF ILLINOIS DEPARTMENT OF TRANSPORTATION	LIGHTING REMOVAL AND ROADWAY & PEDESTRIAN LIGHTING PLAN: FAU 2759 (DES PLAINES AVENUE) - FAU 1459 (26TH STREET) TO STA. 18+50				F.A.U. RTE.	SECTION	COUNTY	TOTAL SHEETS	SHEET NO.		
	PLOT SCALE =	DRAWN — JFP	REVISED — 7-9-24						2759	22-00094-00-LT	COOK	21	9		
	PLOT DATE =	CHECKED — JEF	REVISED — 7-17-24		CONTRACT NO. 61K53				FED. ROAD DIST. NO.				ILLINOIS	FED. AID PROJECT	WL3A(619)
	DATE — 12-27-23	REVISED — 10-25-24	SCALE: 1"=40'				SHEET NO.	OF	SHEETS	STA.	TO STA.				





LEGEND

(RE) REMOVE EXISTING PEDESTRIAN LIGHT STANDARD AND FOUNDATION

PROPOSED DECORATIVE LED LIGHTING STANDARD, TYPE B MOUNTED ON NEW CONCRETE FOUNDATION. (SEE SHEET 13 FOR DETAILS)

PROPOSED DECORATIVE LED LIGHTING STANDARD, TYPE A WITH BANNER ARMS, MOUNTED ON NEW CONCRETE FOUNDATION. (SEE DETAILS ON SHEET 13)

(140') SEE SHEET 12 FOR UNIT DUCT SIZE, LENGTH AND CABLE CONFIGURATION

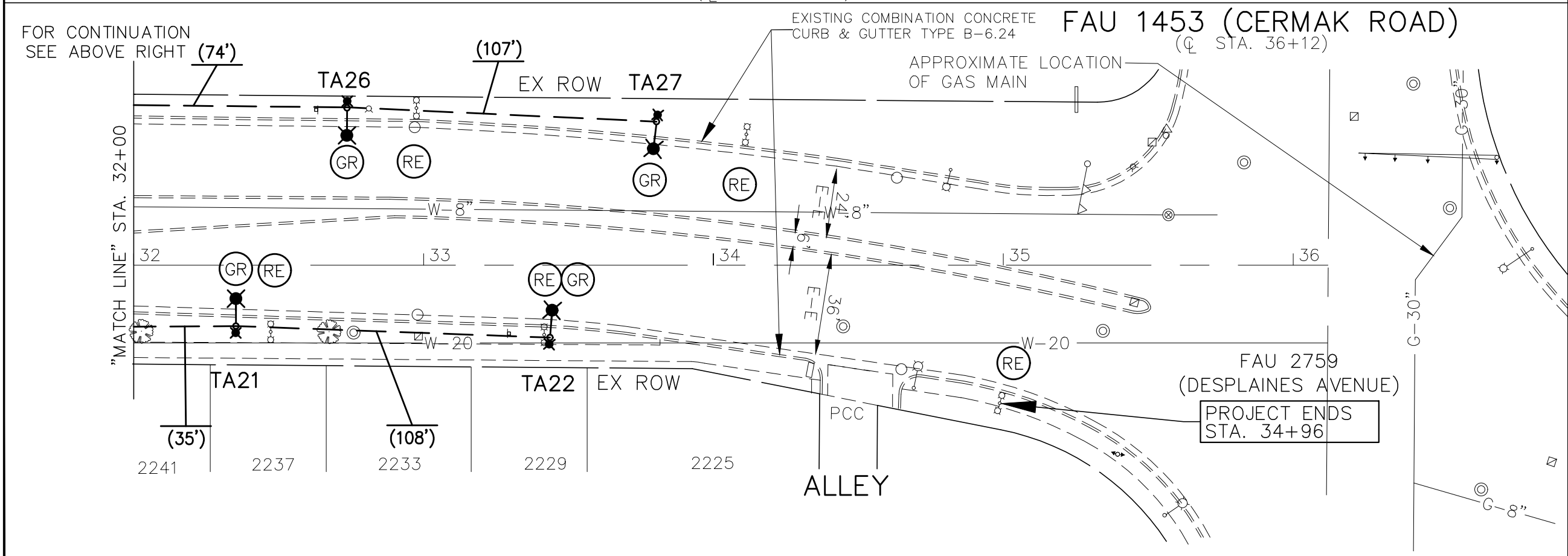
(GR) GROUND ROD TO BE INSTALLED

CE COMMERCIAL ENTRANCE

PE PRIVATE ENTRANCE

EXISTING DECORATIVE CROSSWALK

EXISTING DECORATIVE STAMPED CONCRETE



GRAPHIC SCALE

IN FEET

20 0 20 40

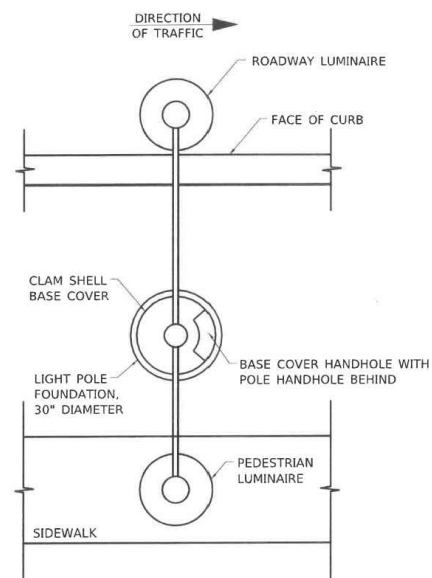
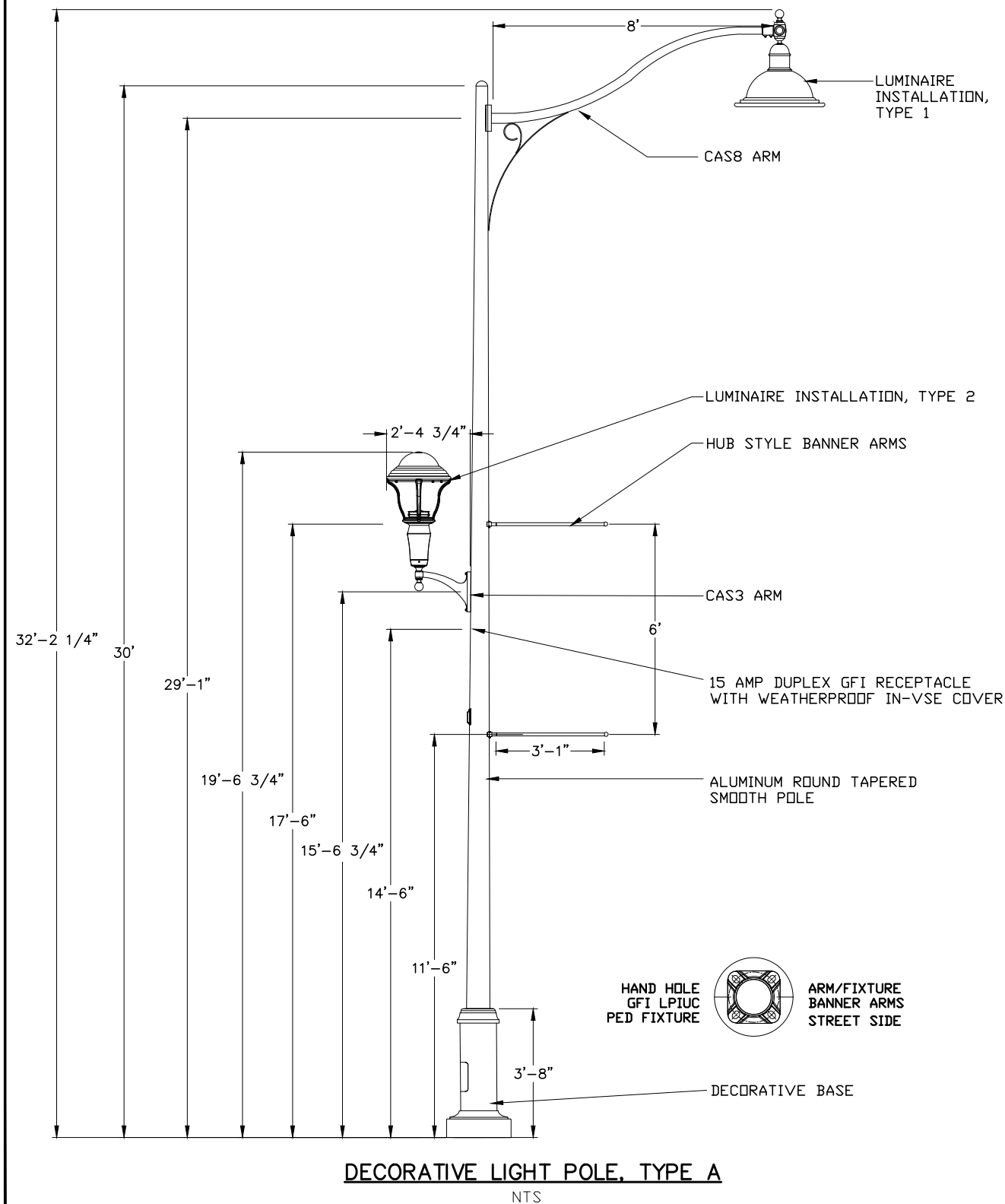
FILE NAME FAU 2759 (DES PLAINES AVENUE) FAU 1459 (26TH STREET) TO FAU 1453 (CERMAK ROAD) LED STREET LIGHTING	USER NAME =	DESIGNED - THK	REVISED - 6-11-24	STATE OF ILLINOIS DEPARTMENT OF TRANSPORTATION	LIGHTING REMOVAL AND ROADWAY & PEDESTRIAN LIGHTING PLAN: FAU 2759 (DES PLAINES AVENUE) - STA. 27+50 TO FAU 1453 (CERMAK ROAD)	F.A.U. RTE. 2759	SECTION 22-00094-00-LT	COUNTY COOK	TOTAL SHEETS 21	SHEET NO. 11
	PLOT SCALE =	DRAWN - JFP	REVISED - 7-9-24			CONTRACT NO. 61K53				
	CHECKED - JEF	DATE - 12-27-23	REVISED - 7-17-24			FED. ROAD DIST. NO. ILLINOIS FED. AID PROJECT WL3A(619)				
	PLOT DATE =	DATE - 12-27-23	REVISED - 10-25-24			SCALE: 1"=40' SHEET NO. OF SHEETS STA. TO STA.				

WEST SIDE LIGHT POLES				
POLE NO.	STATION	OFFSET	LIGHTING CIRCUIT	RECEPTACLE CIRCUIT
TB 1	11+45	31.0'	SW-B(L)	SW-B(R)
TB 2	12+63	31.0'	SW-R(L)	SW-R(R)
TB 3	13+61	31.0'	SW-B(L)	SW-B(R)
TB 4	14+79	31.0'	SW-R(L)	SW-R(R)
TB 5	15+90	31.0'	SW-B(L)	SW-B(R)
TB 6	16+88	31.0'	SW-R(L)	SW-R(R)
TB 7	18+09	31.0'	SW-B(L)	SW-B(R)
TB 8	19+24	31.0'	SW-R(L)	SW-R(R)
TB 9	20+37	31.0'	SW-B(L)	SW-B(R)
TB 10	21+59	28.0'	SW-R(L)	SW-R(R)
TB 11	22+82	28.0'	SW-B(L)	SW-B(R)
TB 12	24+00	31.0'	SW-R(L)	SW-R(R)
TB 13	25+19	32.0'	NW-B(L)	NW-B(R)
TB 14	26+33	33.0'	NW-R(L)	NW-R(R)
TB 15	27+46	40.0'	NW-B(L)	NW-B(R)
TB 16	28+55	46.0'	NW-R(L)	NW-R(R)
TA 23	29+69	56.0'	NW-B(L)	NW-B(R)
TA 24	30+70	56.0'	NW-R(L)	NW-R(R)
TA 25	31+73	55.0'	NW-B(L)	NW-B(R)
TA 26	32+74	54.0'	NW-R(L)	NW-R(R)
TA 27	33+81	50.0'	NW-B(L)	NW-B(R)

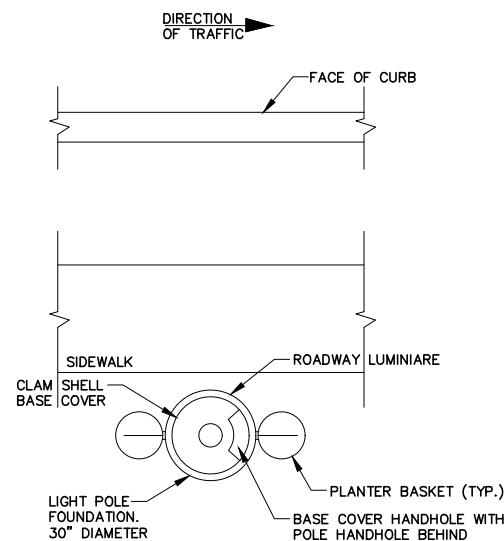
EAST SIDE LIGHT POLES				
POLE NO.	STATION	OFFSET	LIGHTING CIRCUIT	RECEPTACLE CIRCUIT
TB17	11+46	29.0'	SE-B(L)	SE-B(R)
TB18	12+43	29.0'	SE-R(L)	SE-R(R)
TA1	13+24	28.0'	SE-B(L)	SE-B(R)
TA2	14+15	26.0'	SE-R(L)	SE-R(R)
TA3	15+13	26.0'	SE-B(L)	SE-B(R)
TA4	15+98	26.0'	SE-R(L)	SE-R(R)
TA5	16+87	26.0'	SE-B(L)	SE-B(R)
TA6	17+87	26.0'	SE-R(L)	SE-R(R)
TA7	18+75	26.0'	SE-B(L)	SE-B(R)
TA8	19+69	26.0'	SE-R(L)	SE-R(R)
TA9	20+70	26.0'	SE-B(L)	SE-B(R)
TA10	21+73	26.0'	SE-R(L)	SE-R(R)
TA11	21+75	29.0'	SE-B(L)	SE-B(R)
TA12	23+76	29.0'	SE-R(L)	SE-R(R)
TA13	24+75	30.0'	NE-B(L)	NE-B(R)
TA14	25+71	30.0'	NE-R(L)	NE-R(R)
TA15	26+67	29.0'	NE-B(L)	NE-B(R)
TA16	27+59	28.0'	NE-R(L)	NE-R(R)
TA17	28+25	28.0'	NE-B(L)	NE-B(R)
TA18	29+23	28.0'	NE-R(L)	NE-R(R)
TA19	30+23	20.0'	NE-B(L)	NE-B(R)
TA20	31+30	20.0'	NE-R(L)	NE-R(R)
TA21	32+35	21.0'	NE-B(L)	NE-B(R)
TA22	33+43	24.0'	NE-R(L)	NE-R(R)

WEST SIDE PROPOSED UNIT DUCT & CONDUCTOR INFORMATION										
FROM	TO	LENGTH (FT)	UNIT DUCT SIZE (IN)	CABLES & CONDUCTORS		FROM	TO	LENGTH (FT)	UNIT DUCT SIZE (IN)	CABLES & CONDUCTORS
TB1	TB2	118.0000	1-1/2	LIGHTING 3/C #10, RECEPTACLES 3/C #2, GROUND 1/C #8		TB12	CONTROLLER	66.0000	1-1/2	LIGHTING 3/C #10, RECEPTACLES 3/C #2, GROUND 1/C #8
TB2	TB3	98.0000	1-1/2	LIGHTING 3/C #10, RECEPTACLES 3/C #2, GROUND 1/C #8	CONTROL LER		TB13	51.0000	1-1/2	LIGHTING 3/C #10, RECEPTACLES 3/C #4, GROUND 1/C #8
TB3	TB4	118.0000	1-1/2	LIGHTING 3/C #10, RECEPTACLES 3/C #2, GROUND 1/C #8		TB13	TB14	114.0000	1-1/2	LIGHTING 3/C #10, RECEPTACLES 3/C #6, GROUND 1/C #8
TB4	TB5	111.0000	1-1/2	LIGHTING 3/C #10, RECEPTACLES 3/C #2, GROUND 1/C #8		TB14	TB15	113.0000	1-1/2	LIGHTING 3/C #10, RECEPTACLES 3/C #6, GROUND 1/C #8
TB5	TB6	98.0000	1-1/2	LIGHTING 3/C #10, RECEPTACLES 3/C #2, GROUND 1/C #8		TB15	TB16	109.0000	1-1/2	LIGHTING 3/C #10, RECEPTACLES 3/C #6, GROUND 1/C #8
TB6	TB7	121.0000	1-1/2	LIGHTING 3/C #10, RECEPTACLES 3/C #2, GROUND 1/C #8		TB16	TA25	114.0000	USE EXISTING 1-1/4	LIGHTING 3/C #10, RECEPTACLES 3/C #6, GROUND 1/C #8
TB7	TB8	115.0000	1-1/2	LIGHTING 3/C #10, RECEPTACLES 3/C #2, GROUND 1/C #8		TA23	TA24	101.0000	1-1/2	LIGHTING 3/C #10, RECEPTACLES 3/C #6, GROUND 1/C #8
TB8	TB9	113.0000	1-1/2	LIGHTING 3/C #10, RECEPTACLES 3/C #2, GROUND 1/C #8		TA24	TA25	103.0000	1-1/2	LIGHTING 3/C #10, RECEPTACLES 3/C #6, GROUND 1/C #8
TB9	TB10	122.0000	1-1/2	LIGHTING 3/C #10, RECEPTACLES 3/C #2, GROUND 1/C #8		TA25	TA26	101.0000	1-1/2	LIGHTING 3/C #10, RECEPTACLES 3/C #6, GROUND 1/C #8
TB10	TB11	123.0000	1-1/2	LIGHTING 3/C #10, RECEPTACLES 3/C #2, GROUND 1/C #8		TA26	TA27	107.0000	1-1/2	LIGHTING 3/C #10, RECEPTACLES 3/C #6, GROUND 1/C #8
TB11	TB12	118.0000	1-1/2	LIGHTING 3/C #10, RECEPTACLES 3/C #2, GROUND 1/C #8						

EAST SIDE PROPOSED UNIT DUCT & CONDUCTOR INFORMATION										
FROM	TO	LENGTH (FT)	UNIT DUCT SIZE (IN)	CABLES & CONDUCTORS		FROM	TO	LENGTH (FT)	UNIT DUCT SIZE (IN)	CABLES & CONDUCTORS
TB17	TB18	97.0000	1-1/2	LIGHTING 3/C #8, RECEPTACLES 3/C #1, GROUND 1/C #6		TA11	TA12	101.0000	1-1/2	LIGHTING 3/C #8, RECEPTACLES 3/C #1, GROUND 1/C #6
TB18	TA1	81.0000	1-1/2	LIGHTING 3/C #8, RECEPTACLES 3/C #1, GROUND 1/C #6		TA12	CONTROLLER	156.0000	1-1/2	LIGHTING 3/C #8, RECEPTACLES 3/C #1, GROUND 1/C #6
TA1	TA2	91.0000	1-1/2	LIGHTING 3/C #8, RECEPTACLES 3/C #1, GROUND 1/C #6	CONTROL LER		TA13	74.0000	1-1/2	LIGHTING 3/C #10, RECEPTACLES 3/C #4, GROUND 1/C #8
TA2	TA3	98.0000	1-1/2	LIGHTING 3/C #8, RECEPTACLES 3/C #1, GROUND 1/C #6		TA13	TA14	96.0000	1-1/2	LIGHTING 3/C #10, RECEPTACLES 3/C #4, GROUND 1/C #8
TA3	TA4	85.0000	1-1/2	LIGHTING 3/C #8, RECEPTACLES 3/C #1, GROUND 1/C #6		TA14	TA15	96.0000	1-1/2	LIGHTING 3/C #10, RECEPTACLES 3/C #4, GROUND 1/C #8
TA4	TA5	89.0000	1-1/2	LIGHTING 3/C #8, RECEPTACLES 3/C #1, GROUND 1/C #6		TA15	TA16	92.0000	1-1/2	LIGHTING 3/C #10, RECEPTACLES 3/C #4, GROUND 1/C #8
TA5	TA6	100.0000	1-1/2	LIGHTING 3/C #8, RECEPTACLES 3/C #1, GROUND 1/C #6		TA16	TA17	66.0000	1-1/2	LIGHTING 3/C #10, RECEPTACLES 3/C #6, GROUND 1/C #8
TA6	TA7	88.0000	1-1/2	LIGHTING 3/C #8, RECEPTACLES 3/C #1, GROUND 1/C #6		TA17	TA18	98.0000	USE EXISTING 1-1/4	LIGHTING 3/C #10, RECEPTACLES 3/C #6, GROUND 1/C #8
TA7	TA8	94.0000	1-1/2	LIGHTING 3/C #8, RECEPTACLES 3/C #1, GROUND 1/C #6		TA18	TA19	103.0000	1-1/2	LIGHTING 3/C #10, RECEPTACLES 3/C #6, GROUND 1/C #8
TA8	TA9	101.0000	1-1/2	LIGHTING 3/C #8, RECEPTACLES 3/C #1, GROUND 1/C #6		TA19	TA20	107.0000	1-1/2	LIGHTING 3/C #10, RECEPTACLES 3/C #6, GROUND 1/C #8
TA9	TA10	103.0000	1-1/2	LIGHTING 3/C #8, RECEPTACLES 3/C #1, GROUND 1/C #6		TA20	TA21	105.0000	1-1/2	LIGHTING 3/C #10, RECEPTACLES 3/C #6, GROUND 1/C #8
TA10	TA11	102.0000	1-1/2	LIGHTING 3/C #8, RECEPTACLES 3/C #1, GROUND 1/C #6		TA21	TA22	108.0000	1-1/2	LIGHTING 3/C #10, RECEPTACLES 3/C #6, GROUND 1/C #8



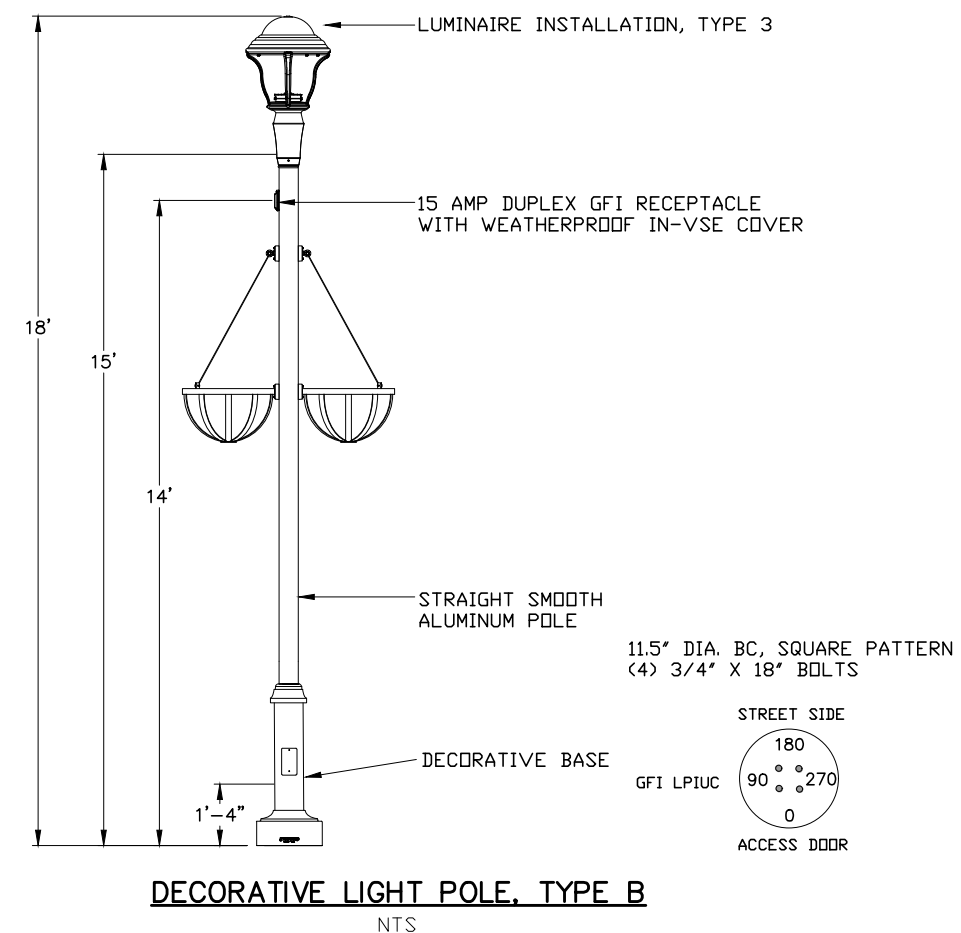
TYPE A ORIENTATION PLAN  
NTS



TYPE B ORIENTATION PLAN  
NTS

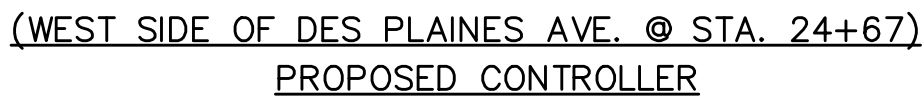
**NOTES:**

1. LIGHTING STANDARDS SHALL BE PROVIDED WITH BLACK, SMOOTH FINISH. SEE SPECIAL PROVISIONS.
2. POLE WIRING SHALL BE ACCORDING TO POLE WIRING DETAIL, BE-702 AND INCLUDED IN THE LIGHT POLE PAY ITEM. PROVIDE EACH LUMINAIRE WITH A DOUBLE-POLE FUSE HOLDER.
3. CONCRETE LIGHT POLE FOUNDATION SHALL BE ACCORDING TO DISTRICT 1 STANDARD BE301.
4. LIGHT POLES SHALL CARRY THE LISTING MARKS FROM UL OR ETL.

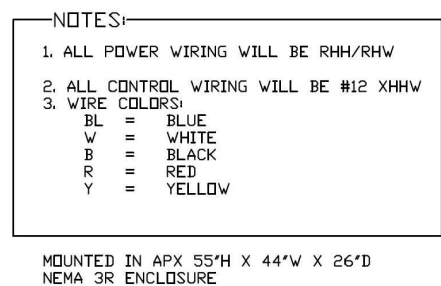
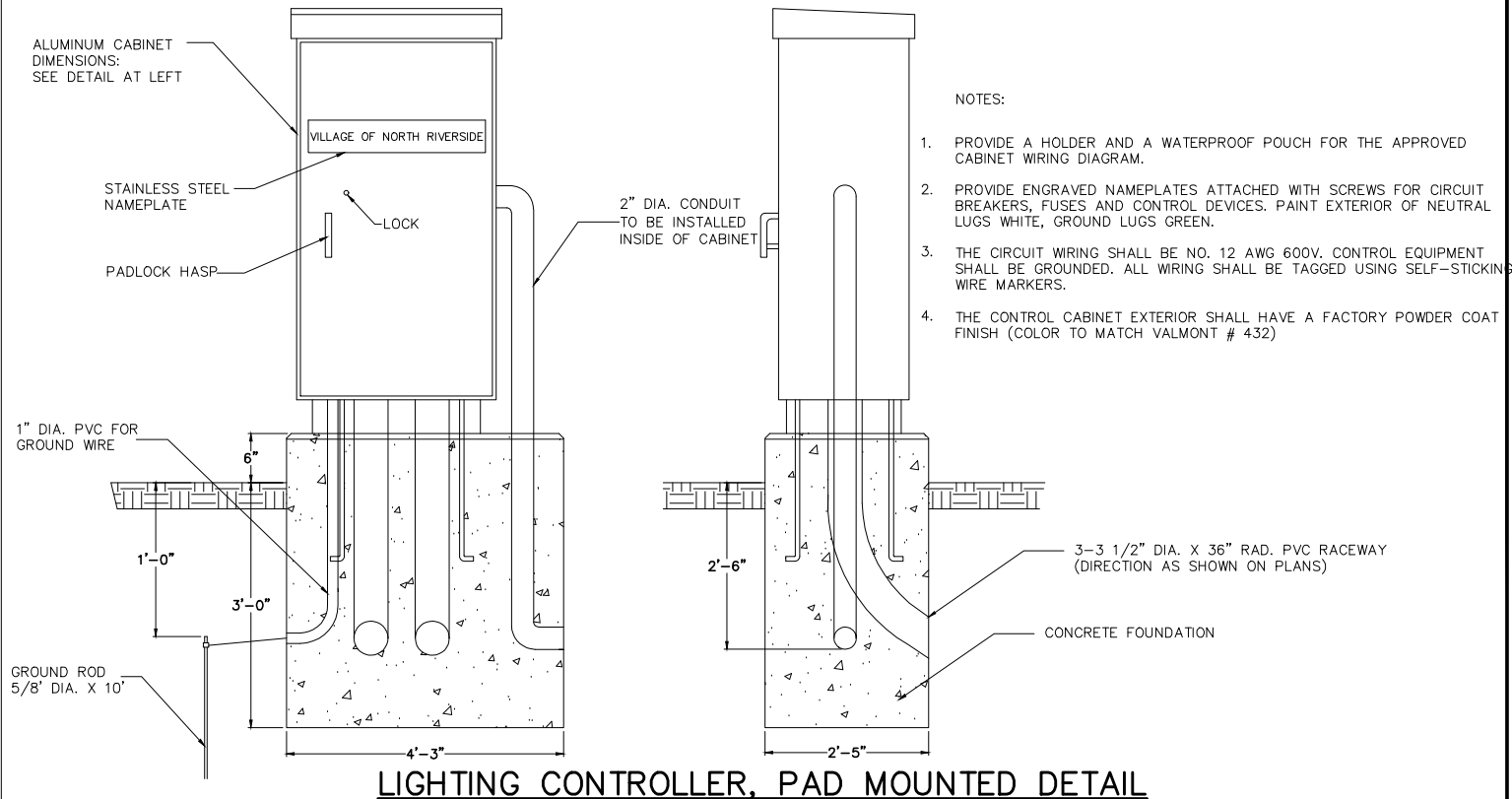


DECORATIVE LIGHT POLE, TYPE B  
NTS

FILE NAME <b>FAU 2759 (DES PLAINES AVENUE)</b> <b>FAU 1459 (26TH STREET) TO FAU 1453 (CERMAK ROAD)</b> <b>LED STREET LIGHTING</b>  #20072	USER NAME =	DESIGNED — JEF	REVISED — 5-22-24	<b>STATE OF ILLINOIS</b> <b>DEPARTMENT OF TRANSPORTATION</b>	<b>ROADWAY AND PEDESTRIAN LIGHTING STANDARD DETAILS</b>				F.A.U. RTE.	SECTION	COUNTY	TOTAL SHEETS	SHEET NO.	
	DRAWN — JFP	REVISED — 6-07-24	2759						22-00094-00-LT	COOK	21	13		
	PLOT SCALE =	CHECKED — THK	REVISED — 7-9-24		CONTRACT NO. 61K53									
	PLOT DATE =	DATE — 2-22-24	REVISED — 7-11-24		SCALE: NTS	SHEET NO.	OF	SHEETS	STA.	TO STA.	FED. ROAD DIST. NO.	ILLINOIS	FED. AID PROJECT	WL 3A(619)

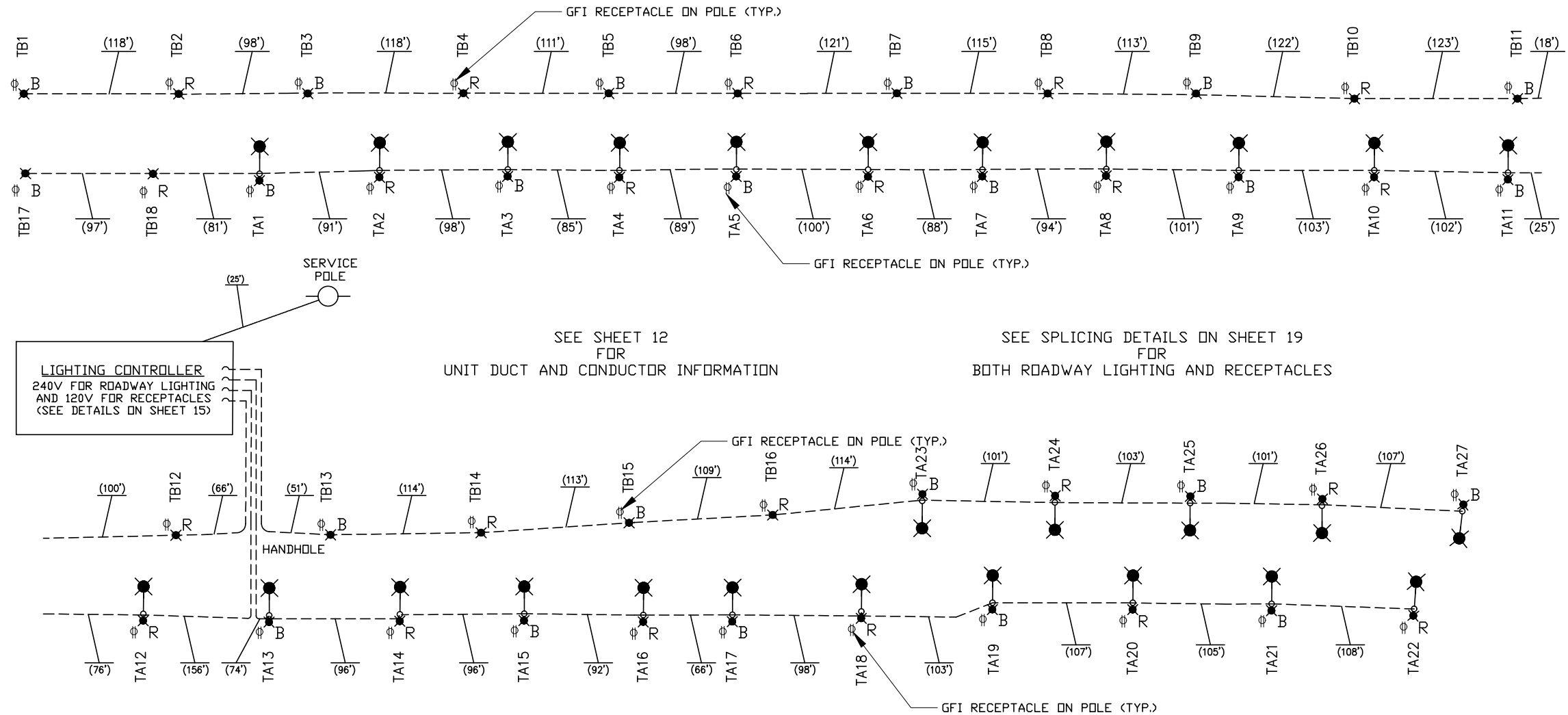
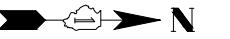


FILE NAME	USER NAME =	DESIGNED — JEF	REVISED — 5-22-24	STATE OF ILLINOIS DEPARTMENT OF TRANSPORTATION	ROADWAY AND PEDESTRIAN LIGHTING CONSTRUCTION DETAILS				F.A.U. RTE.	SECTION	COUNTY	TOTAL SHEETS	SHEET NO.
FAU 2759 (DES PLAINES AVENUE) FAU 1459 (26TH STREET) TO FAU 1453 (CERMAK ROAD) LED STREET LIGHTING		DRAWN — JFP	REVISED — 6-11-24						2759	22-00094-00-LT	COOK	21	14
#20072	PLOT SCALE =	CHECKED — THK	REVISED — 7-17-24		CONTRACT NO. 61K53								
	PLOT DATE =	DATE — 2-22-24	REVISED —		SCALE: NTS	SHEET NO. OF SHEETS	STA. TO STA.	FED. ROAD DIST. NO.	ILLINOIS FED. AID PROJECT	WL3A(619)			



<u>CONTROLLER – SCHEDULE OF EQUIPMENT</u>		
<i>ITEM</i>	<i>QTY</i>	<i>DESCRIPTION</i>
<b>A</b>	<b>1</b>	2P/100A MAIN DISCONNECT
<b>B</b>	<b>2</b>	2P/60A DISCONNECT BREAKER
<b>C</b>	<b>3</b>	1P/15A CTRL/AUX/TRANS. PRI
<b>D</b>	<b>16</b>	1P/20A BRANCH BREAKERS
<b>E</b>	<b>2</b>	2P 60A ELEC. CONTACTOR
<b>F</b>	<b>1</b>	5KVA TRANSFORMER
<b>G</b>	<b>2</b>	H.O.A. SELECTOR SWITCH IN CONTROL STATION
<b>H</b>	<b>1</b>	3PT TERMINAL BLOCK
<b>I</b>	<b>1</b>	120V PHOTOCELL
<b>J</b>	<b>1</b>	20A GFCI RECPT.
<b>K</b>	<b>1</b>	DOOR SWITCH
<b>L</b>	<b>1</b>	LIGHT FIXTURE
<b>M</b>	<b>2</b>	12" X 1" X 1/4" GROUND/NEUTRAL BUS BARS
<b>N</b>	<b>1</b>	SURGE PROTECTION DEV.
<b>O</b>	<b>2</b>	DISTRIBUTION BLOCK
<b>R</b>	<b>1</b>	METER FITTING

MOUNTED IN APX 55"H X 44"W X 26"D  
NEMA 3R ENCLOSURE

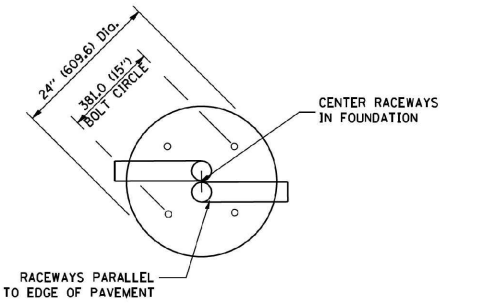


FILE NAME <b>FAU 2759 (DES PLAINES AVENUE)</b> FAU 1459 (26TH STREET) TO FAU 1453 (CERMAK ROAD) <b>LED STREET LIGHTING</b> #20072	USER NAME =	DESIGNED — JEF	REVISED — 5-22-24	STATE OF ILLINOIS DEPARTMENT OF TRANSPORTATION	SINGLE LINE DIAGRAM	F.A.U. RTE. 2759	SECTION 22-00094-00-LT	COUNTY COOK	TOTAL SHEETS 21	SHEET NO. 16
	PLOT SCALE =	DRAWN — JFP	REVISED — 6-11-24			CONTRACT NO. 61K53				
	PLOT DATE =	CHECKED — THK	REVISED — 7-17-24			FED. ROAD DIST. NO. ILLINOIS FED. AID PROJECT WL3A(619)				
	DATE — 2-22-24	REVISED —	SCALE: 1"=100'   SHEET NO. OF SHEETS STA. TO STA.							

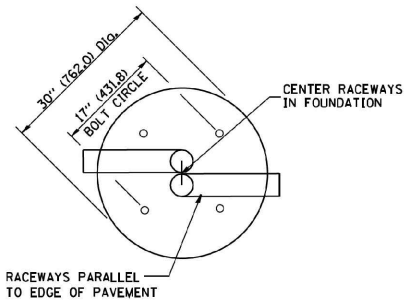


LIGHT POLE FOUNDATION DEPTH TABLE  
 40 FT. (12.192 m) TO 47.5 FT. (14.478 m) MOUNTING HEIGHT

SOIL CONDITIONS	DESIGN DEPTH "D" OF FOUNDATION	
	SINGLE ARM POLE	TWIN ARM POLE
SOFT CLAY Qu = 0.375 TON/SQ. FT.	13'-0" (3.96 m)	15'-0" (4.57 m)
MEDIUM CLAY Qu = 0.75 TON/SQ.FT	9'-6" (2.09 m)	10'-9" (3.23 m)
STIFF CLAY Qu = 1.50 TON/SQ. FT.	7'-0" (2.13 m)	8'-0" (2.44 m)
LOOSE SAND φ = 34°	9'-0" (2.74 m)	10'-0" (3.05 m)
MEDIUM SAND φ = 37.5°	8'-3" (2.52 m)	9'-0" (2.74 m)
DENSE SAND φ = 40°	7'-9" (2.36 m)	9'-0" (2.74 m)



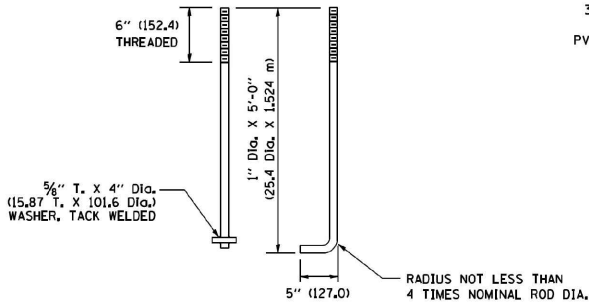
TOP VIEW



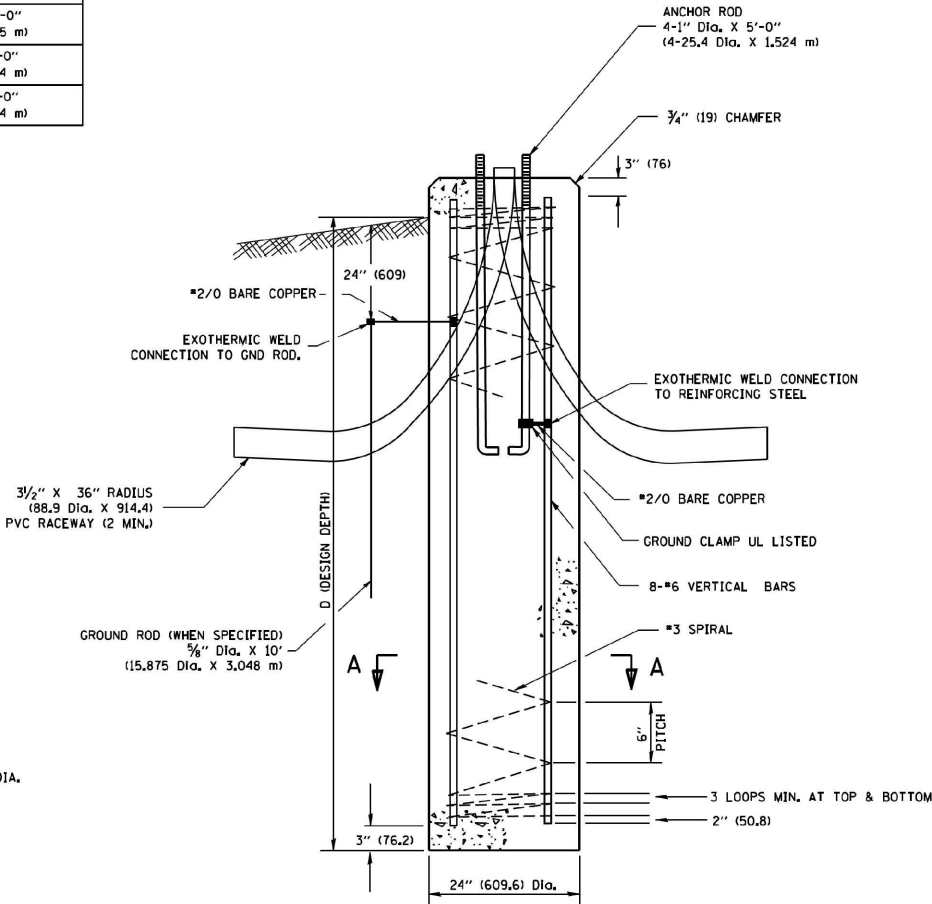
TOP VIEW

NOTES

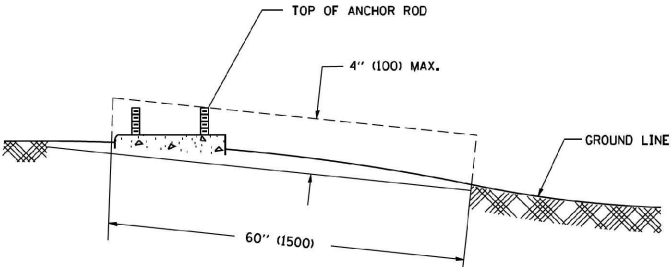
- ALL DIMENSIONS ARE IN INCHES (MILLIMETERS) UNLESS OTHERWISE SHOWN.
- THE ANCHOR RODS AND RACEWAYS SHALL BE PROPERLY SECURED IN PLACE BEFORE THE CONCRETE IS PLACED.
- THE FOUNDATION SHALL NOT PROTRUDE MORE THAN 100MM (4 IN.) ABOVE THE FINISHED GRADE WITHIN A 60 IN. (1.5 m) CHORD ACROSS THE FOUNDATION, WITH ANCHOR RODS INCLUDED, IN ACCORDANCE WITH AASHTO GUIDELINES. IF THE FOUNDATION HEIGHT, INCLUDING ANCHOR RODS, EXTENDS BEYOND THESE SPECIFIED LIMITS, THE FOUNDATION SHALL BE REPLACED AT THE CONTRACTOR'S EXPENSE. SEE FOUNDATION EXTENSION DETAIL.
- THE HOLE FOR THE FOUNDATION SHALL BE MADE BY DRILLING WITH AN AUGER, OF THE SAME DIAMETER AS THE FOUNDATION, IF SOIL CONDITIONS REQUIRE THE USE OF A LINER TO FORM THE HOLE, THE LINER SHALL BE WITHDRAWN AS THE CONCRETE IS DEPOSITED.
- THE TOP OF THE FOUNDATION SHALL BE CONSTRUCTED LEVEL. A LINER OR FORM SHALL BE USED TO PRODUCE A UNIFORM SMOOTH SIDE TO THE TOP OF THE FOUNDATION. FOUNDATION TOP SHALL BE CHAMFERED 3/4-IN. (20 mm).
- THE CONCRETE SHALL BE CLASS S1. CONCRETE SHALL CURE ACCORDING TO ARTICLE 1020.13 BEFORE LIGHT POLES ARE INSTALLED.
- THE ANCHOR ROD SHALL BE A HOOK ROD TYPE. COLD BENDING OF THE ANCHOR ROD WILL NOT BE ALLOWED. THE RADIUS OF THE HOOK BEND SHALL NOT BE LESS THAN 4 TIMES THE NOMINAL DIAMETER OF THE ANCHOR ROD. A TACK WELDED ANCHOR ROD MAY BE SUBSTITUTED WITH THE APPROVAL OF THE ENGINEER.
- THE ANCHOR RODS SHALL BE ACCORDING TO ASTM F1554 GRADE 725 (GRADE 105). NUTS SHALL BE HEXAGON NUTS ACCORDING TO ASTM A 194 2H OR ASTM A 563 DH, AND WASHERS SHALL BE ACCORDING TO ASTM F 436.
- ANCHOR RODS, NUTS AND WASHERS SHALL BE COMPLETELY GALVANIZED BY EITHER THE HOT-DIPPED PROCESS CONFORMING WITH AASHTO M 232, THE MECHANICAL PLATING METHOD CONFORMING TO AASHTO M 298, CLASS 50 WITH A MAXIMUM COATING THICKNESS OF 150 UMG MILS) OR THE ELECTROLYTIC PROCESS ACCORDING TO ASTM F 1136.
- THE ANCHOR RODS SHALL BE THREADED A MINIMUM OF 6 INCHES (150 mm) WITH A MINIMUM OF 3 INCHES (75 mm) OF THREADED ANCHOR ROD EMBEDDED IN THE FOUNDATION.
- ANCHOR RODS SHALL PROJECT 2 3/4" (69.9 mm) ABOVE THE TOP OF THE FOUNDATION. IF BREAKAWAY COUPLINGS ARE SPECIFIED, THE CONTRACTOR SHALL CAREFULLY COORDINATE THE ANCHOR ROD PROJECTION WITH THE INSTALLATION REQUIREMENTS OF THE BREAKAWAY COUPLINGS.
- THE CONTRACTOR SHALL USE A #3 SPIRAL AT 6" (152.4 mm) PITCH OR MAY SUBSTITUTE #3 TIES AT 12" (304.8 mm) O.C. WITH THE APPROVAL OF THE ENGINEER.
- THE CABLE TRENCHES AND FOUNDATION SHALL BE BACK FILLED AND COMPACTED AS SPECIFIED BEFORE THE LIGHT POLE IS ERECTED.
- THE RACEWAYS SHALL PROJECT 1" (25.4 mm) ABOVE THE TOP OF THE FOUNDATION.



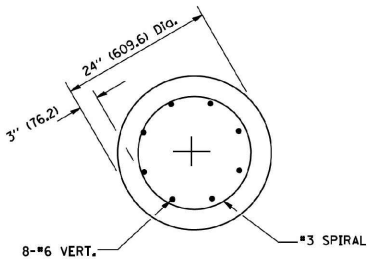
ANCHOR ROD DETAIL



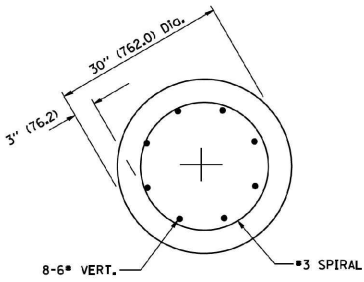
FOUNDATION DETAIL



FOUNDATION EXTENSION DETAIL



SECTION A-A



SECTION A-A

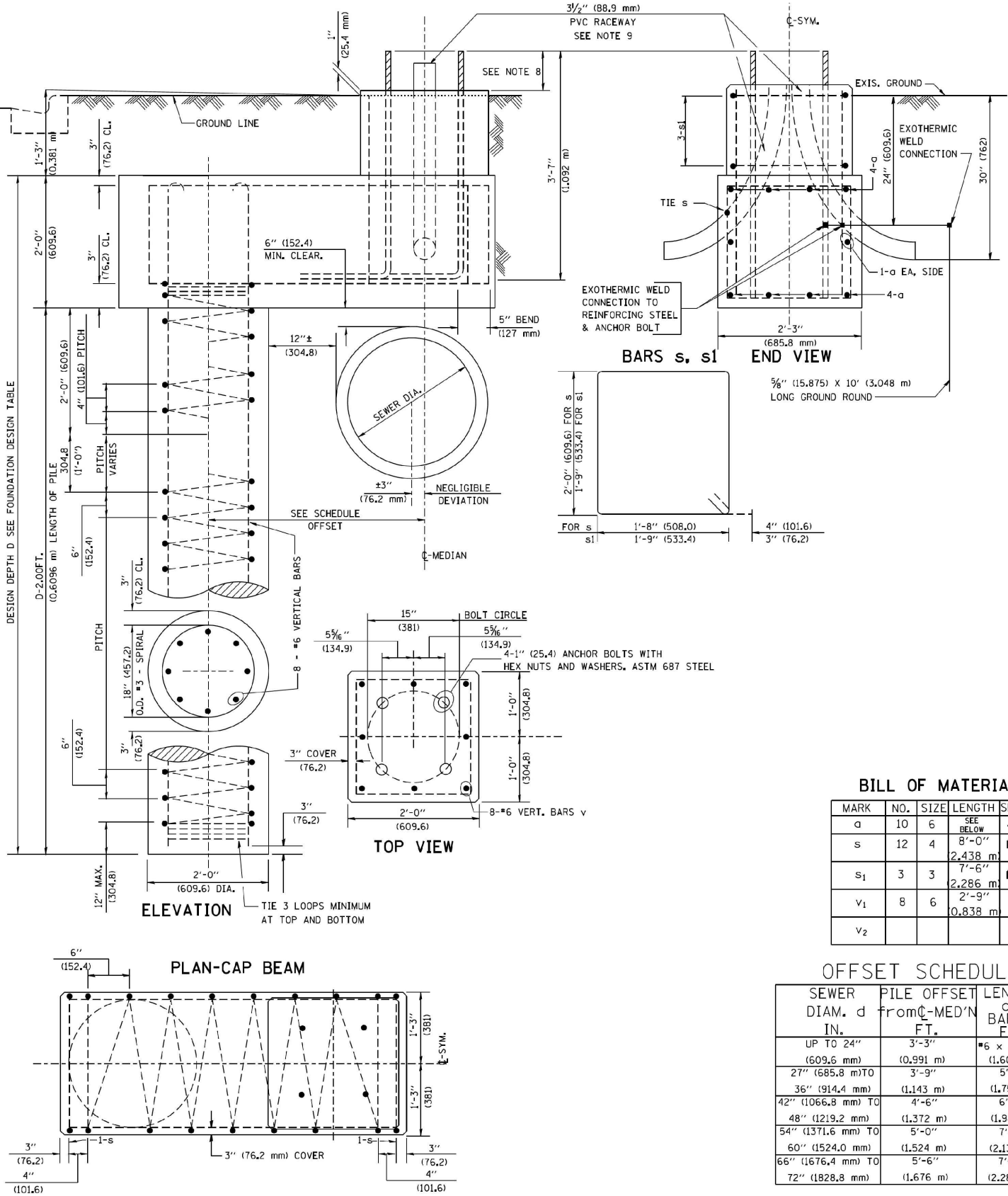
FILE NAME = W:\diststd\22x34\be381.dgn	USER NAME = gaglianob		DESIGNED -	REVISED - 04-22-02	STATE OF ILLINOIS DEPARTMENT OF TRANSPORTATION	LIGHT POLE FOUNDATION 40' (12.192 m) TO 47 1/2' (14.478 m) M.H. 15" (381 mm) BOLT CIRCLE			F.A.U. RTE.	SECTION	COUNTY	TOTAL SHEETS	SHEET NO.
	DRAWN -		CHECKED -	REVISED -					2759	22-00094-00-LT	COOK	21	17
	PLOT SCALE = 50.0000' / IN.		DATE -	REVISED -		SCALE: NONE SHEET NO. 1 OF 1 SHEETS STA. TO STA.			BE-301 CONTRACT NO. 61K53				
	PLOT DATE = 1/4/2008								FED. ROAD DIST. NO. 1 ILLINOIS FED. AID PROJECT H99H(730)				

FOUNDATION DESIGN TABLE

TYPE OF SOIL	DESIGN DEPTH OF FOUNDATION		REINFORCEMENT IN FOUNDATION			
	SINGLE ARM D	TWIN ARM D	SINGLE ARM		TWIN ARM	
			VERT BARS	SPIRAL	VERT BARS	SPIRAL
SOFT CLAY	13'-0" (3,962 m)	15'-0" (4,572 m)	8-#6X12'-6" (3,810 m)	#3X122' (37,186 m)	8-#6X14'-3" (4,343 m)	#3X141' (42,977 m)
MEDIUM CLAY	9'-6" (2,896 m)	10'-9" (3,277 m)	8-#6X9'-0" (2,743 m)	#3X90' (27,432 m)	8-#6X10'-0" (3,048 m)	#3X100' (30,480 m)
STIFF CLAY	7'-0" (2,134 m)	8'-0" (2,438 m)	8-#6X6'-6" (1,981 m)	#3X66' (20,112 m)	8-#6X7'-6" (2,286 m)	#3X76' (23,165 m)
LOOSE SAND	9'-0" (2,743 m)	10'-0" (3,048 m)	8-#6X8'-6" (2,591 m)	#3X85' (25,908 m)	8-#6X9'-6" (2,896 m)	#3X94' (28,651 m)
MEDIUM SAND	8'-3" (2,515 m)	9'-0" (2,743 m)	8-#6X8'-0" (2,438 m)	#3X78' (23,774 m)	8-#6X8'-6" (2,591 m)	#3X85' (25,908 m)
DENSE SAND	7'-9" (2,362 m)	9'-0" (2,743 m)	8-#6X7'-6" (2,286 m)	#3X73' (22,250 m)	8-#6X8'-6" (2,591 m)	#3X85' (25,908 m)
ROCK OR SOLIDIFIED SLAG	5'-0" (1,524 m)	5'-0" (1,524 m)	NONE	NONE	NONE	NONE

NOTES

- ALL DIMENSIONS ARE IN INCHES (MILLIMETERS) UNLESS OTHERWISE SHOWN.
- THE ENGINEER SHALL DETERMINE THE CLASS OF SOIL DURING EXCAVATION AND SELECT THE DESIGN DEPTH OF FOUNDATION FROM THE DESIGN TABLE.
- EXCAVATION OF THE POLE FOUNDATION SHALL BE MADE WITH AN AUGER, 24" (609.6 mm) OR 30" (762.0 mm) IN DIAMETER.
- THE ANCHOR ROD SHALL BE A HOOK ROD TYPE. COLD BENDING OF THE ANCHOR ROD WILL NOT BE ALLOWED. THE RADIUS OF THE HOOK SHALL NOT BE LESS THAN 4 TIMES THE NOMINAL DIAMETER OF THE ANCHOR ROD. A TACK WELDED ANCHOR ROD MAY BE SUBSTITUTED WITH THE APPROVAL OF THE ENGINEER.
- THE ANCHOR BOLTS AND RACEWAYS SHALL BE PROPERLY SECURED IN PLACE BEFORE THE CONCRETE IS PLACED IN THE FORM.
- THE ANCHOR RODS SHALL BE ACCORDING TO ASTM F1554 GRADE 725 (GRADE 105). NUTS SHALL BE HEXAGON NUTS ACCORDING TO ASTM A 194 2H OR ASTM A 563 DH, AND WASHERS SHALL BE ACCORDING TO ASTM F 436.
- THE CONTRACTOR SHALL COORDINATE EXTENSION OF ANCHOR BOLTS ABOVE TOP OF FOUNDATION WITH THE BREAKAWAY DEVICE MANUFACTURER'S REQUIREMENTS. IF LIGHT POLE IS MOUNTED WITHOUT BREAKAWAY DEVICE, ANCHOR BOLTS SHALL PROJECT 2 3/4" (69.9 mm) ABOVE TOP OF THE FOUNDATION. THE CONTRACTOR SHALL CONFIRM ANCHOR BOLT EXTENTION WITH ENGINEER.
- RACEWAYS SHALL PROJECT 1" (25.4 mm) ABOVE THE TOP OF THE FOUNDATION.
- THE CABLE TRENCH SHALL BE BACKFILLED AND FIRMLY COMPACTED BEFORE THE LIGHT IS ERCTED.



BILL OF MATERIAL

MARK	NO.	SIZE	LENGTH	SHAPE
a	10	6	SEE BELOW	—
s	12	4	8'-0" (2,438 m)	□
s <sub>1</sub>	3	3	7'-6" (2,286 m)	□
v <sub>1</sub>	8	6	2'-9" (0,838 m)	—
v <sub>2</sub>				

OFFSET SCHEDULE

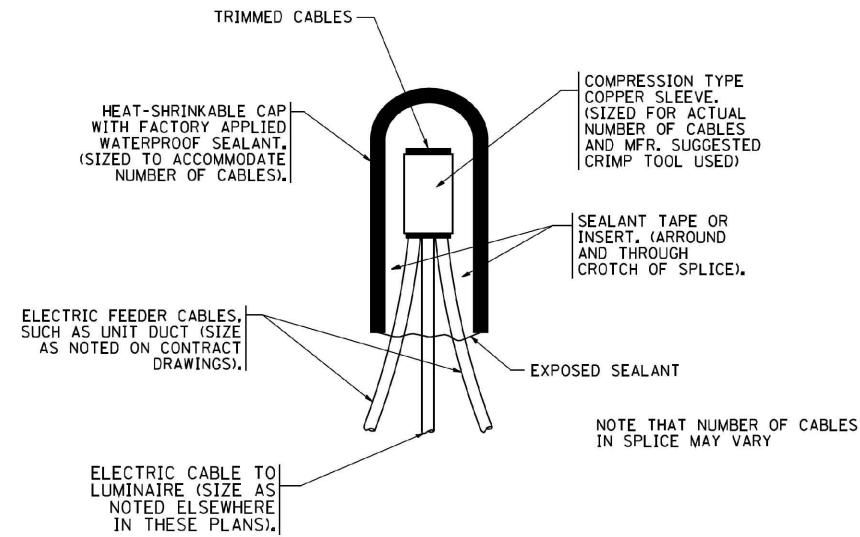
SEWER DIAM. d IN.	PILE OFFSET from C-MED'N FT.	LENGTH OF BAR a FT.
UP TO 24" (609.6 mm)	3'-3" (0,991 m)	#6 x 5'-3" (1,600 m)
27" (685.8 mm) TO 36" (914.4 mm)	3'-9" (1,143 m)	5'-9" (1,753 m)
42" (1066.8 mm) TO 48" (1219.2 mm)	4'-6" (1,372 m)	6'-6" (1,981 m)
54" (1371.6 mm) TO 60" (1524.0 mm)	5'-0" (1,524 m)	7'-0" (2,134 m)
66" (1676.4 mm) TO 72" (1828.8 mm)	5'-6" (1,676 m)	7'-6" (2,286 m)

FILE NAME = K:\dststd22x34\be310.dgn	USER NAME = bauerdl	DESIGNED -	REVISED - 06-16-08 R. TOMSONS
		DRAWN -	REVISED -
	PLOT SCALE = 50.000 ' / IN.	CHECKED -	REVISED -
	PLOT DATE = 6/16/2008	DATE -	REVISED -

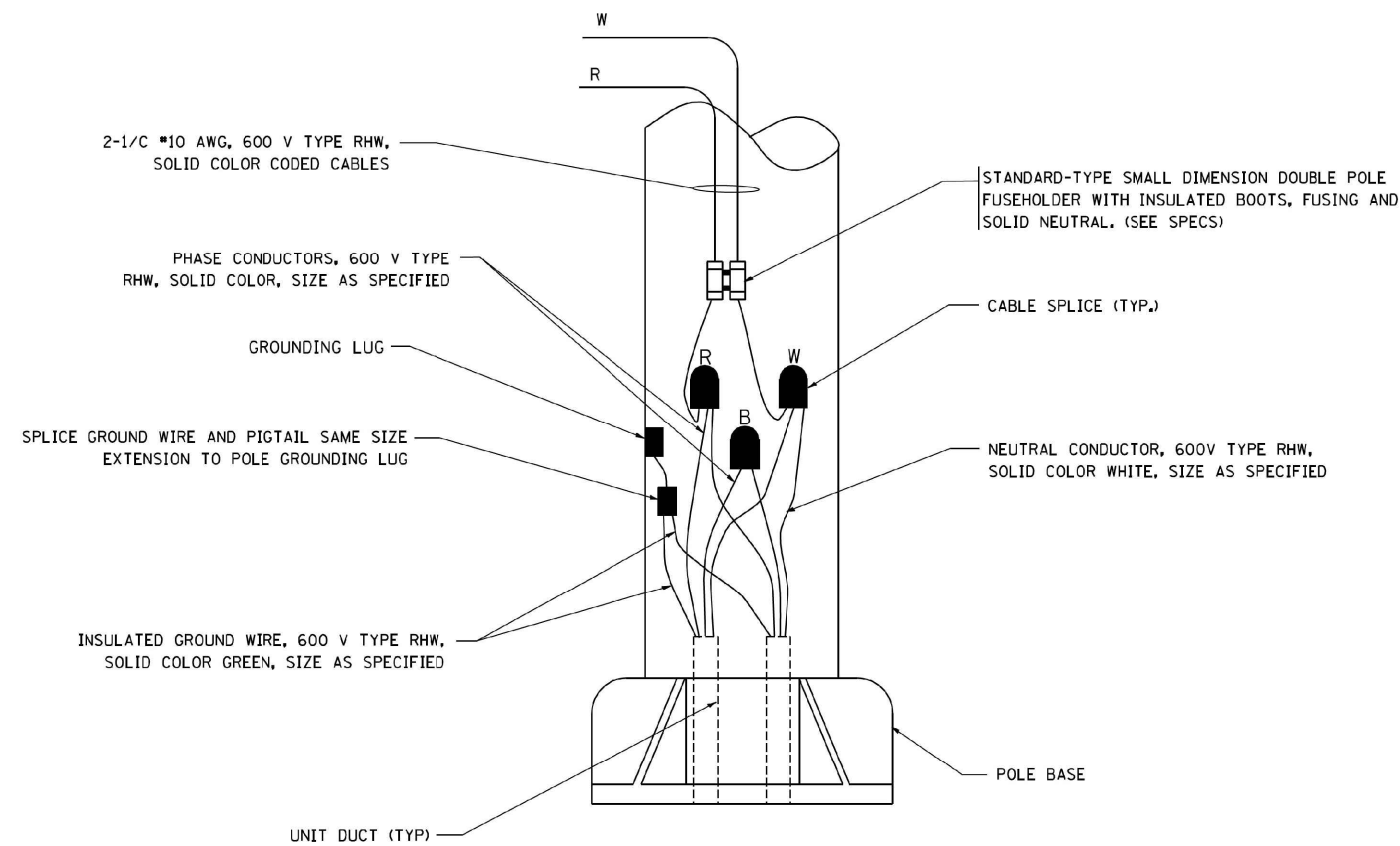
STATE OF ILLINOIS  
DEPARTMENT OF TRANSPORTATION

LIGHT POLE FOUNDATION OFFSET 40' (12,192 m) TO 47 1/2' (14,478 m) M.H. 15" (381 mm) BOLT CIRCLE		F.A.U. RTE. 2759	SECTION 22-00094-00-LT	COUNTY COOK	TOTAL SHEETS 21	SHEET NO. 18
SCALE: SHEET NO. 1 OF 1 SHEETS STA. TO STA.		BE-310 CONTRACT NO. 61K53 ILLINOIS FED. AID PROJECT H99H(730)				

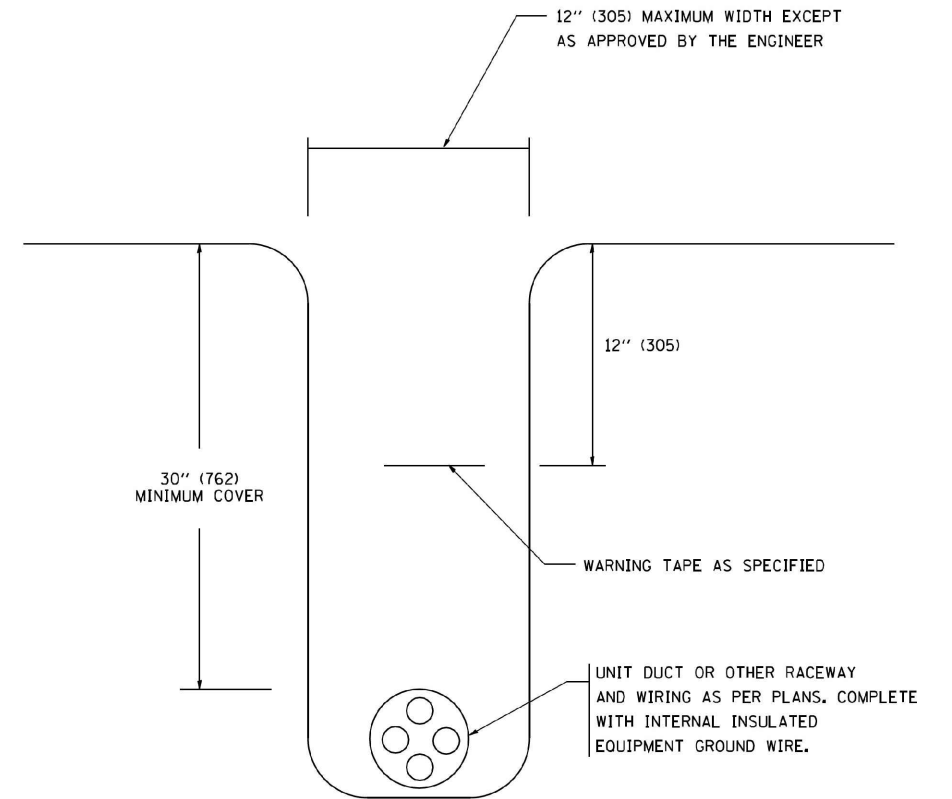
6/16/2008  
K:\dststd22x34\be310.dgn  
bauerdl



TYPICAL SPLICE DETAIL  
N.T.S.



POLE WIRING DETAIL  
N.T.S.



TYPICAL WIRING IN TRENCH DETAIL  
N.T.S.

FILE NAME = W:\diststd\22x34\be782.dgn	USER NAME = gaglienabt	DESIGNED -	REVISED - 08-08-03	STATE OF ILLINOIS DEPARTMENT OF TRANSPORTATION	MISC. ELECTRICAL DETAILS SHEET A					F.A.U. RTE.	SECTION	COUNTY	TOTAL SHEETS	SHEET NO.
		DRAWN -	REVISED -							2759	22-00094-00-LT	COOK	21	19
	PLOT SCALE = 50.000' / IN.	CHECKED -	REVISED -							BE-702		CONTRACT NO. 61K53		
	PLOT DATE = 1/4/2008	DATE -	REVISED -		SCALE: NONE	SHEET NO. 1 OF 1 SHEETS	STA.	TO STA.	FED. ROAD DIST. NO. 1   ILLINOIS   FED. AID PROJECT H99H(730)					

Model: Default  
File Name: p:\work-pw-bentley.com\pwwd\DOT\Documents\DOT\_Offices\District\_1\Projects\Dist1\Std22a\1\CAD\Drawn\CA\Drawn\std10.dgn

USER NAME	= Lawrence.DelManche	DESIGNED	- L.H.A.	REVISED	- T. RAMMACHER 01-06-00
		DRAWN	-	REVISED	- A. SCHUETZE 07-01-13
PLOT SCALE	= 100.0000' / in.	CHECKED	-	REVISED	- A. SCHUETZE 09-15-16
PLOT DATE	= 5/3/2024	DATE	- 06-89	REVISED	- D. SENDERAK 05-03-24

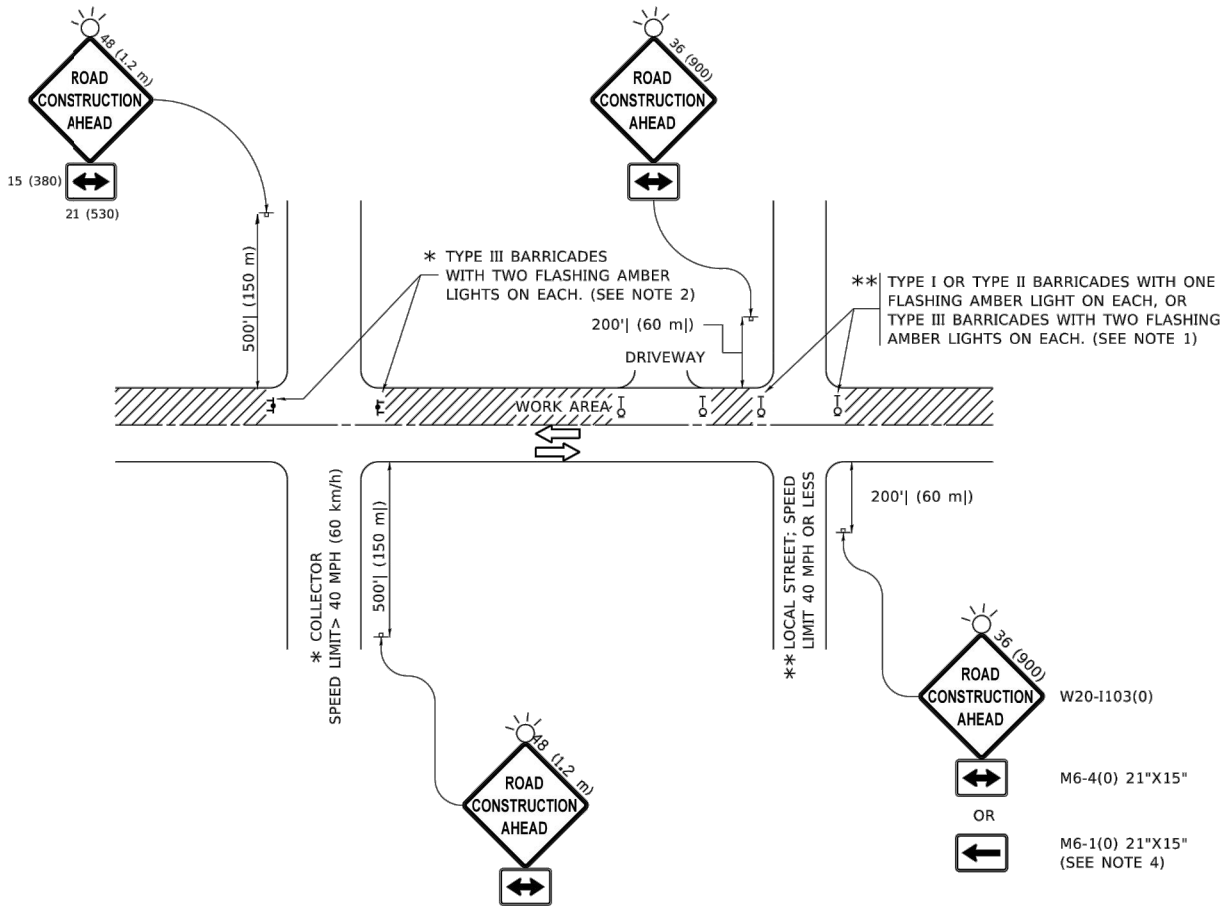
STATE OF ILLINOIS  
DEPARTMENT OF TRANSPORTATION

TRAFFIC CONTROL AND PROTECTION FOR  
SIDE ROADS, INTERSECTIONS, AND DRIVEWAYS

SCALE: NONE    SHEET 1 OF 1 SHEETS    STA. TO STA.

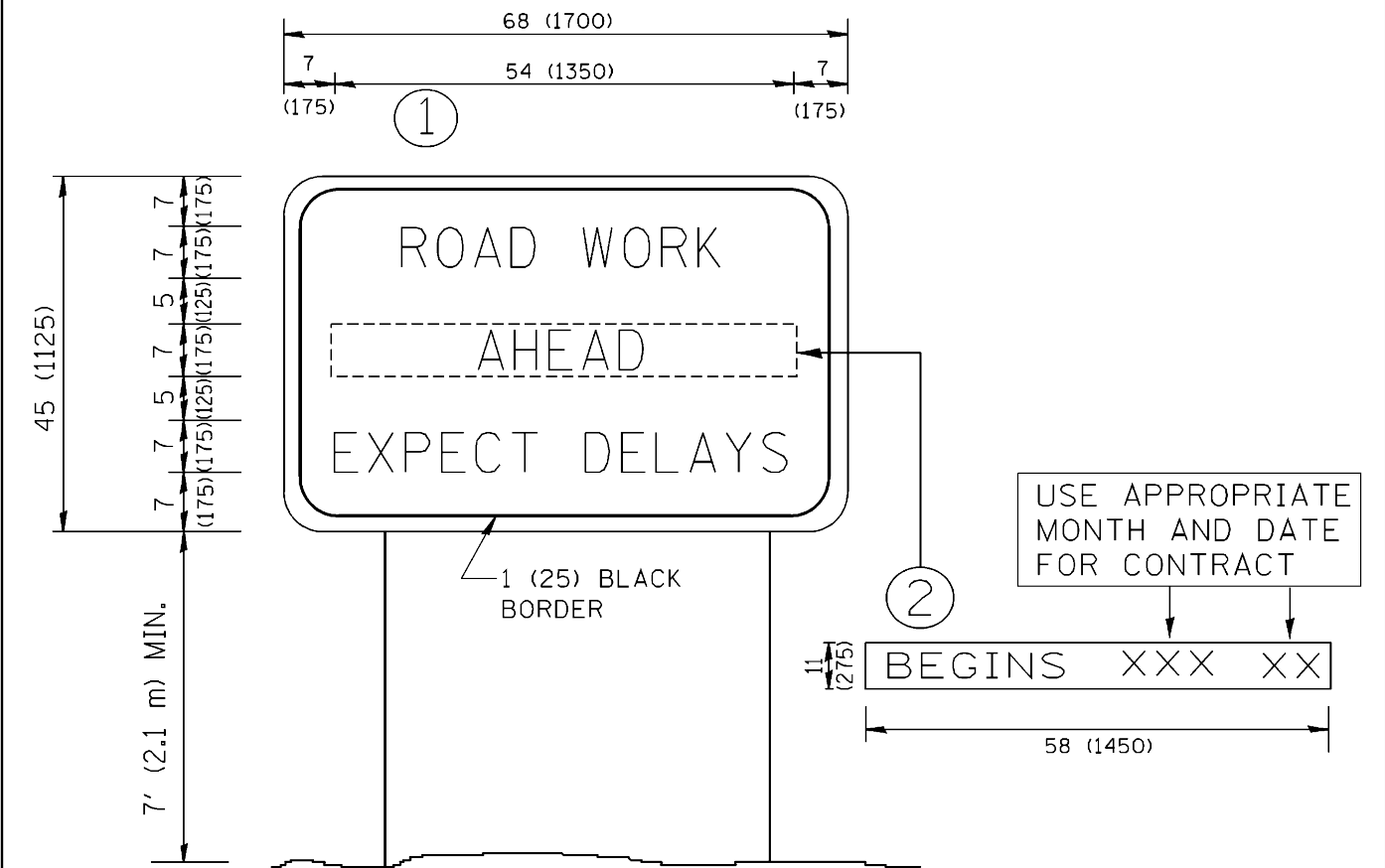
All dimensions are in inches (millimeters)  
unless otherwise shown.

F.A. U RTE	SECTION	COUNTY	TOTAL SHEETS	SHEET NO.
2759	22-00094-00-LT	COOK	21	20
TC-10		CONTRACT NO. 61K53		
ILLINOIS		FED. AID PROJECT	H99H(730)	



NOTES:

- SIDE ROAD WITH A SPEED LIMIT OF 40 MPH (60 km/h) OR LESS AS SHOWN ON THE DRAWING AND AS DIRECTED BY THE ENGINEER:
  - ONE "ROAD CONSTRUCTION AHEAD" SIGN 36 x 36 (900x900) WITH A FLASHER MOUNTED ON IT APPROXIMATELY 200' (60 m) IN ADVANCE OF THE MAIN ROUTE.
  - THE CLOSED PORTION OF THE MAIN ROUTE SHALL BE PROTECTED BY BLOCKING WITH TYPE I, TYPE II OR TYPE III BARRICADES, 1/3 OF THE CROSS SECTION OF THE CLOSED PORTION.
- SIDE ROAD WITH A SPEED LIMIT GREATER THAN 40 MPH (60 km/h) AS SHOWN ON THE DRAWING AND AS DIRECTED BY THE ENGINEER:
  - ONE "ROAD CONSTRUCTION AHEAD" SIGN 48 x 48 (1.2 m x 1.2 m) WITH A FLASHER MOUNTED ON IT APPROXIMATELY 500' (150 m) IN ADVANCE OF THE MAIN ROUTE.
  - THE CLOSED PORTION OF THE MAIN ROUTE SHALL BE PROTECTED BY BLOCKING WITH TYPE III BARRICADES, 1/2 OF THE CROSS SECTION OF THE CLOSED PORTION.
- CONES MAY BE SUBSTITUTED FOR BARRICADES OR DRUMS AT HALF THE SPACING DURING DAY OPERATIONS. CONES SHALL BE A MINIMUM OF 28 (710) IN HEIGHT.
- SIGNING AND THE WORK ZONE, A SINGLE HEADED ARROW (M6-1) SHALL BE USED IN LIEU OF THE DOUBLE HEADED ARROW (M6-4).
- WHEN WORK IS BEING PERFORMED ON A SIDE ROAD OR DRIVEWAY, FOLLOW THE APPLICABLE STANDARD(S). THE DIRECTIONAL ARROW (M6-1 OR M6-4) SHALL BE COVERED OR REMOVED WHEN NO LONGER CONSISTENT WITH THE TRAFFIC CONTROL SET-UP.
- ADVANCE WARNING SIGNS ARE TO BE OMITTED ON DRIVEWAYS UNLESS OTHERWISE SPECIFIED IN THE PLANS OR BY THE ENGINEER.
- THE TRAFFIC CONTROL AND PROTECTION FOR SIDE ROADS, INTERSECTIONS, AND DRIVEWAYS SHALL BE INCLUDED IN THE COST OF SPECIFIED TRAFFIC CONTROL STANDARDS OR ITEMS.



NOTES:

1. USE BLACK LETTERING ON ORANGE BACKGROUND.
2. ERECT SIGNS IN ADVANCE OF THE LOCATION FOR THE "ROAD CONSTRUCTION AHEAD" SIGN AT LOCATIONS AS DIRECTED BY THE ENGINEER.
3. ERECT SIGN ① WITH INSTALLED PANEL ② ONE WEEK PRIOR TO THE START OF CONSTRUCTION.
4. REMOVE PANEL ② SOON AFTER THE START OF CONSTRUCTION.
5. SEE SPECIAL PROVISION FOR "TEMPORARY INFORMATION SIGNING" FOR ADDITIONAL INFORMATION.
6. ONE SIGN ASSEMBLY EQUALS 25.70 SQ. FT. (2.3 SQ. M.)
7. SHALL BE PAID FOR AS TEMPORARY INFORMATION SIGNING.

ALL DIMENSIONS ARE IN INCHES (MILLIMETERS)  
UNLESS OTHERWISE SHOWN.

FILE NAME = W:\diststd\22x34\tc22.dgn	USER NAME = gaglienobt	DESIGNED -	REVISED - R. MIRS 09-15-97	STATE OF ILLINOIS DEPARTMENT OF TRANSPORTATION	ARTERIAL ROAD INFORMATION SIGN				F.A.U. RTE.	SECTION	COUNTY	TOTAL SHEETS	SHEET NO.
		DRAWN -	REVISED - R. MIRS 12-11-97						2759	22-00094-00-LT	COOK	21	21
	PLOT SCALE = 50.000' / IN.	CHECKED -	REVISED - T. RAMMACHER 02-02-99						TC-22		CONTRACT NO. 61K53		
	PLOT DATE = 1/4/2008	DATE -	REVISED - C. JUCIUS 01-31-07						FED. ROAD DIST. NO. 1 ILLINOIS FED. AID PROJECT H99H(730)				
					SCALE: NONE	SHEET NO. 1 OF 1 SHEETS	STA.	TO STA.					