

INDEX OF SHEETS

01-17-2025 LETTING ITEM 113

1. COVER SHEET
2. SUMMARY OF QUANTITIES
3. QUANTITY DETAILS
4. TYPICAL SECTION
5. INTERSECTION DETAIL
6. PAVEMENT MARKING
- 7-9. BUTT JOINTS
- 10-11. TYPICAL PAVEMENT MARKINGS

IDOT DISTRICT 4 STANDARDS

406101-D4
780001-D4

HIGHWAY STANDARDS

701427-05
701901-10
780001-05

STATE OF ILLINOIS DEPARTMENT OF TRANSPORTATION DIVISION OF HIGHWAYS

PLANS FOR PROPOSED ROADWAY IMPROVEMENT

TAZEWELL COUNTY

F.A.U. 6711 - PARKWAY DRIVE (CH 25)

SECTION NO. 22-00050-00-RS

PROJECT NO. ELND (118)

JOB NO. C-94-056-24

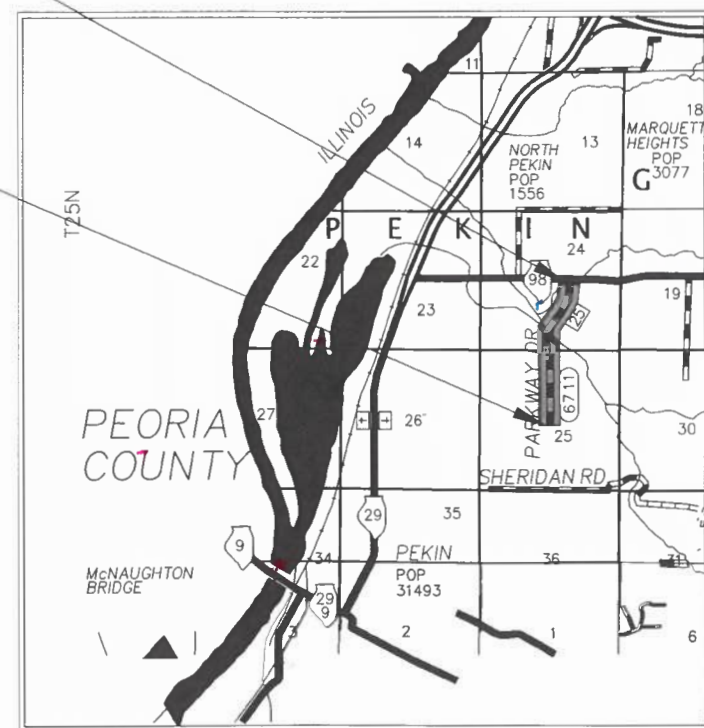
PROPOSED
PROJECT
LOCATION

ROUTE NO.	SECTION	COUNTY	TOTAL SHEETS	SHEET NO.
FAU 6711	22-00050-00-RS	TAZEWELL	11	1
FED. ROAD DIST. NO.		ILLINOIS PROJECT		



END IMPROVEMENT
STA. 84+25

BEGIN IMPROVEMENT
STA. 57+60



R5W

SCALE OF LAYOUT
1 mi

NET LENGTH OF IMPROVEMENT: 2,665 FEET OR 0.505 MILES
TOTAL LENGTH OF IMPROVEMENT: 2,665 FEET OR 0.505 MILES

TOLL FREE

JOINT UTILITY LOCATING INFORMATION FOR EXCAVATORS
(J.U.L.I.E.) TELEPHONE NUMBER
1-800-892-0123

DESIGN GUIDELINES: LAFO

ADT (2023) = 6850
DESIGN SPEED: 40 M.P.H.
HIGHWAY CLASS: MINOR ARTERIAL (URBAN)
CONTRACT NO: 89863
CATALOG NO: 036502-00D

THESE PLANS WERE PREPARED BY A FULL TIME
MEMBER OF MY STAFF UNDER MY PERSONAL
SUPERVISION.

DATE: 24 Oct 2024



TAZEWELL COUNTY ENGINEER

APPROVED: 24 Oct 20 24
TAZEWELL COUNTY ENGINEER
PASSED: 10-29-20 24
DISTRICT 4 ENGINEER OF LOCAL ROADS & STREETS

RELEASING FOR BID
BASED ON LIMITED
REVIEW: October 30 20 24
REGION 3 ENGINEER
STATE OF ILLINOIS
DEPARTMENT OF TRANSPORTATION

ROUTE NO.	SECTION	COUNTY	TOTAL SHEETS	SHEET NO.
FAU 6711	22-00050-00-RS	TAZEWELL	11	2
FED. ROAD DIST. NO.		ILLINOIS	PROJECT	

SUMMARY OF QUANTITIES

CONSTRUCTION TYPE CODE:

CODE NO.	PAY ITEM	UNIT	QUANTITY
40600295	POLYMERIZED BITUMINOUS MATERIALS (TACK COAT)	POUND	9,404
40600405	MATERIAL TRANSFER DEVICE	TON	1,097
40600982	HOT-MIX ASPHALT SURFACE REMOVAL - BUTT JOINT	SQ YD	360
40600990	TEMPORARY RAMP	SQ YD	30
40604160	POLYMERIZED HOT-MIX ASPHALT SURFACE COURSE, IL-9.5, MIX "D", N50	TON	1,097
44000155	HOT-MIX ASPHALT SURFACE REMOVAL, 1 1/2"	SQ YD	12,702
67100100	MOBILIZATION	L SUM	1
70300100	SHORT TERM PAVEMENT MARKING	FOOT	1,696
70300150	SHORT TERM PAVEMENT MARKING REMOVAL	SQ FT	283
* 78009000	MODIFIED URETHANE PAVEMENT MARKING - LETTERS AND SYMBOLS	SQ FT	58
* 78009004	MODIFIED URETHANE PAVEMENT MARKING - LINE 4"	FOOT	6,460
* 78009008	MODIFIED URETHANE PAVEMENT MARKING - LINE 8"	FOOT	485
* 78009012	MODIFIED URETHANE PAVEMENT MARKING - LINE 12"	FOOT	77
* 78009024	MODIFIED URETHANE PAVEMENT MARKING - LINE 24"	FOOT	60
X7010216	TRAFFIC CONTROL AND PROTECTION (SPECIAL)	L SUM	1

* SPECIALTY ITEM

GENERAL NOTES

1) WHERE SECTION OR SUBSECTION MONUMENTS ARE ENCOUNTERED, THE ENGINEER SHALL BE NOTIFIED BEFORE SUCH MONUMENTS ARE REMOVED. THE CONTRACTOR SHALL PROTECT AND CAREFULLY PRESERVE ALL PROPERTY MARKS AND MONUMENTS UNTIL THE OWNER, AN AUTHORIZED SURVEYOR, OR AGENT HAS WITNESSED OR OTHERWISE REFERENCED THEIR LOCATION.

2) THERE ARE EXISTING DECTECTOR LOOPS FOR THE TRAFFIC SIGNALS AT PARKWAY DRIVE AND IL ROUTE 98 IN THE NORTH BOUND LANE OF PARKWAY DRIVE. IT IS ASSUMED THEY WILL NOT BE DAMAGED DURING THE HOT-MIX ASPHALT SURFACE REMOVAL. IF THE DECTECTOR LOOPS ARE DAMAGED AND NEED TO BE REPAIRED OR REPLACED THIS WORK WILL BE DONE IN ACCORDANCE WITH ART. 109.04 OF THE STANDARD SPECIFICATIONS FOR ROAD AND BRIDGE CONSTRUCTION.

SUMMARY OF QUANTITIES PARKWAY DRIVE (CH 25) SEC. 22-00050-00-RS TAZEWELL COUNTY	
CONTRACT NO.	89863
PROJECT NO.	ELND (118)
JOB NO.	C-94-056-24

ROUTE NO.	SECTION	COUNTY	TOTAL SHEETS	SHEET NO.
FAU 6711	22-00050-00-RS	TAZEWELL	11	3
FED. ROAD DIST. NO.		ILLINOIS	PROJECT	

QUANTITY DETAILS

FAU 6711 - Parkway Dr. (CH 25) - Northern Limits of City of Pekin - Sta. 57 + 60
to Edge of Pavement of IL 98 - Sta. 84 + 25

Road Length: 2,665 Feet
Road Width: 42 Feet

P HMA Surface Course thickness: 1.5 Inches

Bituminous Area: Roadway: 11,947 SQ YD
IL 98 Intersection: 1,115 SQ YD
TOTAL: 13,062 SQ YD

40600295 - POLYMERIZED BITUMINOUS MATERIALS (TACK COAT) 9,404 POUND
0.08 lb / SQ FT on Milled Surface

40600982 - HOT-MIX ASPHALT SURFACE REMOVAL - BUTT JOINT 360 SQ YD
Ends

44000155 - HOT-MIX ASPHALT SURFACE REMOVAL, 1 1/2" 12,702 SQ YD

40600990 - TEMPORARY RAMP 30 SQ YD

40604160 - POLYMERIZED HOT-MIX ASPHALT SURFACE COURSE, IL 9.5, MIX "D", N50 1,097 TON
Roadway

40600405 - MATERIAL TRANSFER DEVICE 1,097 TON
Poly HMA Surface Course

70300100 - SHORT-TERM PAVEMENT MARKING 1,696 FOOT
Yellow 2 Lifts 4'/40': 512 Foot
White 2 Lifts 4'/40': 1,184 Foot
Total 1,696 Foot

70300150 - SHORT TERM PAVEMENT MARKING REMOVAL 283 SQ FT

67100100 - MOBILIZATION 1 L SUM

X7010216 - TRAFFIC CONTROL AND PROTECTION, (SPECIAL) 1 L SUM

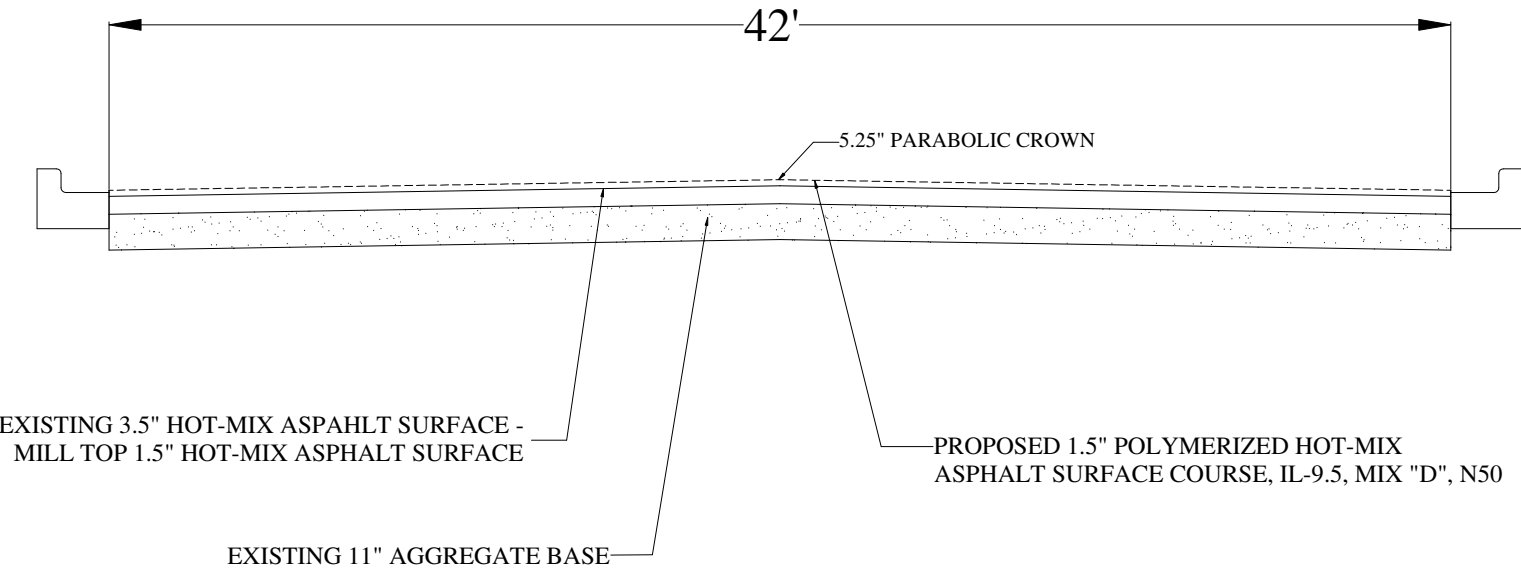
PAVEMENT MARKING QUANTITIES - SEE SHEET 6 OF 6

QUANTITY DETAILS PARKWAY DRIVE (CH 25) SEC. 22-00050-00-RS TAZEWELL COUNTY	
CONTRACT NO.	89863
PROJECT NO.	ELND (118)
JOB NO.	C-94-056-24

ROUTE NO.	SECTION	COUNTY	TOTAL SHEETS	SHEET NO.
FAU 6711	22-00050-00-RS	TAZEWELL	11	4
FED. ROAD DIST. NO.		ILLINOIS	PROJECT	

TYPICAL CROSS SECTION
FAU 6711 - PARKWAY DR. (CH 25)

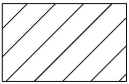
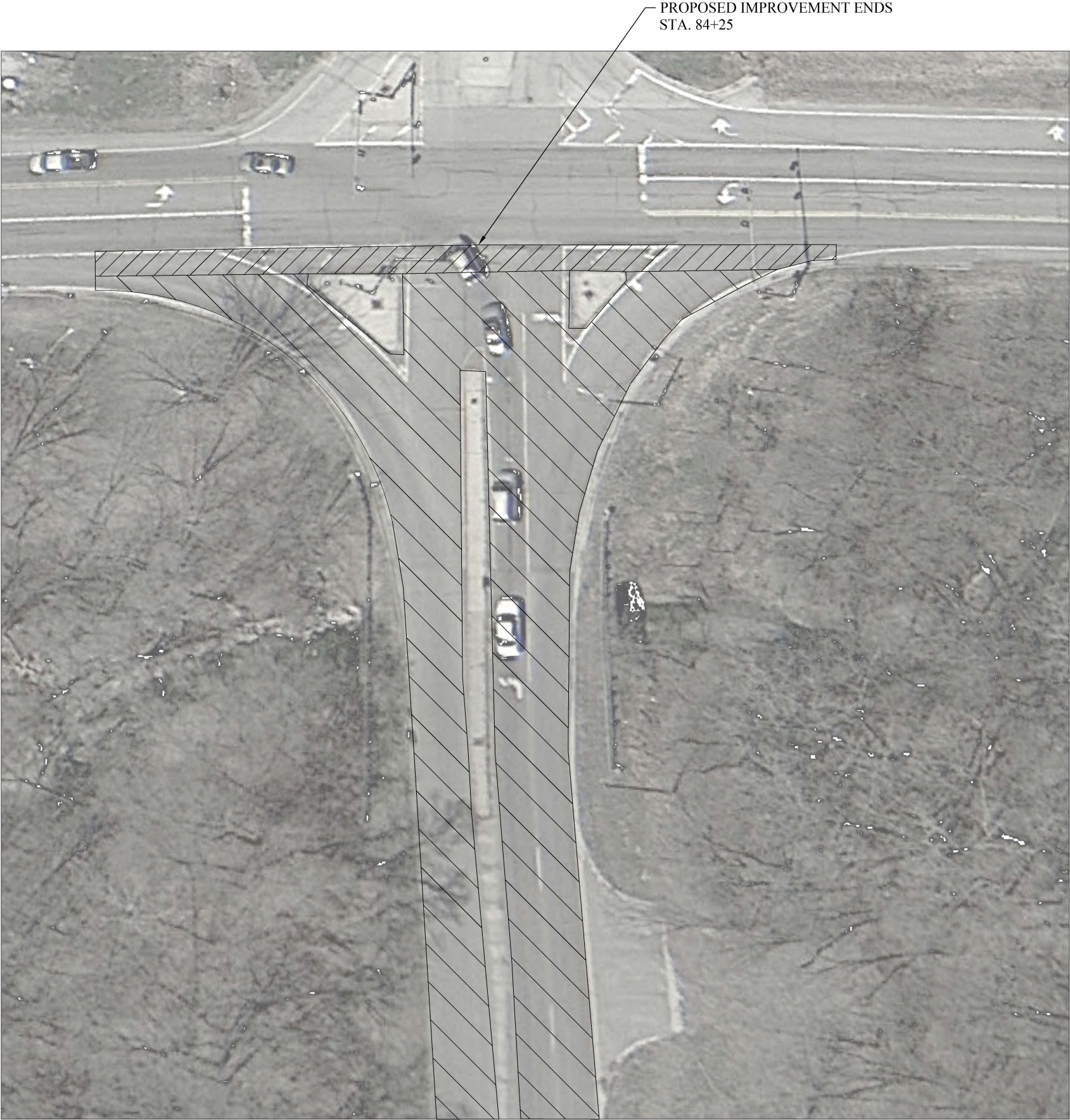
Northern Limist of City of Pekin - Sta. 57+60
to Edge of Pavement of IL 98 - Sta. 84+25



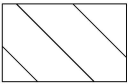
LOCATION: FAU 6711 - PARKWAY DR. (CH 25)	
MIXTURE USE:	SURFACE
PG:	SBS 70-22
DESIGN AIR VOIDS:	4% @ Ndes 50
MIXTURE COMPOSTION: (MIXTURE GRADATION)	IL 9.5
FRICTION AGGREGATE:	MIXTURE D

TYPICAL CROSS SECTION PARKWAY DRIVE (CH 25) SEC. 22-00050-00-RS TAZEWELL COUNTY	
CONTRACT NO.	89863
PROJECT NO.	ELND (118)
JOB NO.	C-94-056-24

ROUTE NO.	SECTION	COUNTY	TOTAL SHEETS	SHEET NO.
FAU 6711	22-00050-00-RS	TAZEWELL	11	5
FED. ROAD DIST. NO.		ILLINOIS	PROJECT	



HOT-MIX ASPHALT SURFACE
REMOVAL - BUTT JOINT



HOT-MIX ASPHALT SURFACE
REMOVAL

NOTE:

THERE ARE EXISTING DECTECTOR LOOPS FOR THE TRAFFIC SIGNALS AT PARKWAY DRIVE AND IL ROUTE 98 IN THE NORTH BOUND LANE OF PARKWAY DRIVE. IT IS ASSUMED THEY WILL NOT BE DAMAGED DURING THE HOT-MIX ASPHALT SURFACE REMOVAL. IF THE DECTECTOR LOOPS ARE DAMAGED AND NEED TO BE REPAIRED OR REPLACED THIS WORK WILL BE DONE IN ACCORDANCE WITH ART. 109.04 OF THE STANDARD SPECIFICATIONS FOR ROAD AND BRIDGE CONSTRUCTION.

INTERSECTION DETAIL PARKWAY DRIVE (CH 25) SEC. 22-00050-00-RS TAZEWELL COUNTY	
CONTRACT NO.	89863
PROJECT NO.	ELND (118)
JOB NO.	C-94-056-24

ROUTE NO.	SECTION	COUNTY	TOTAL SHEETS	SHEET NO.
FAU 6711	22-00050-00-RS	TAZEWELL	11	6
FED. ROAD DIST. NO.		ILLINOIS	PROJECT	

PAVEMENT MARKING QUANTITY DETAILS

78009000 - MODIFIED URETHANE PAVEMENT MARKING - LETTERS AND SYMBOLS

2 LEFT TURN ARROWS	-	31.2	SQ FT
1 THROUGH ARROW	-	11.5	SQ FT
1 RIGHT TURN ARROW	-	15.6	SQ FT
TOTAL		58	SQ FT

78009004 - MODIFIED URETHANE PAVEMENT MARKING - LINE 4"

4" SOLID DOUBLE YELLOW			
(STA. 57 + 60 TO STA. 81 + 45)	-	4,770	FOOT
4" SOLID YELLOW AROUND RASIED MEDIAN			
(STA. 81 + 45 TO STA. 83 + 90)	-	490	FOOT
4" SKIP DASH WHITE			
(STA. 57 + 60 RT TO STA. 82 + 40 RT)	-	620	FOOT
(STA. 57 + 60 LT TO STA. 80 + 65 LT)	-	580	FOOT
TOTAL		6,460	FOOT

78009008 - MODIFIED URETHANE PAVEMENT MARKING - LINE 8"

8" SOLID WHITE			
TURN LANE (STA. 82 + 85 RT TO STA. 84 + 05 RT)	-	120	FOOT
AROUND ISLAND (STA. 84 + 10 LT)	-	180	FOOT
AROUND ISLAND (STA. 84 + 10 RT)	-	145	FOOT
TURN LANE (STA. 84+25 LT)	-	40	FOOT
TOTAL		485	FOOT

78009012 - MODIFIED URETHANE PAVEMENT MARKING - LINE 12"

12" SOLID WHITE			
ISLAND (STA. 84 + 10 LT)	-	44	FOOT
ISLAND (STA. 84 + 10 RT)	-	33	FOOT
TOTAL		77	FOOT

78009024 - MODIFIED URETHANE PAVEMENT MARKING - LINE 24"

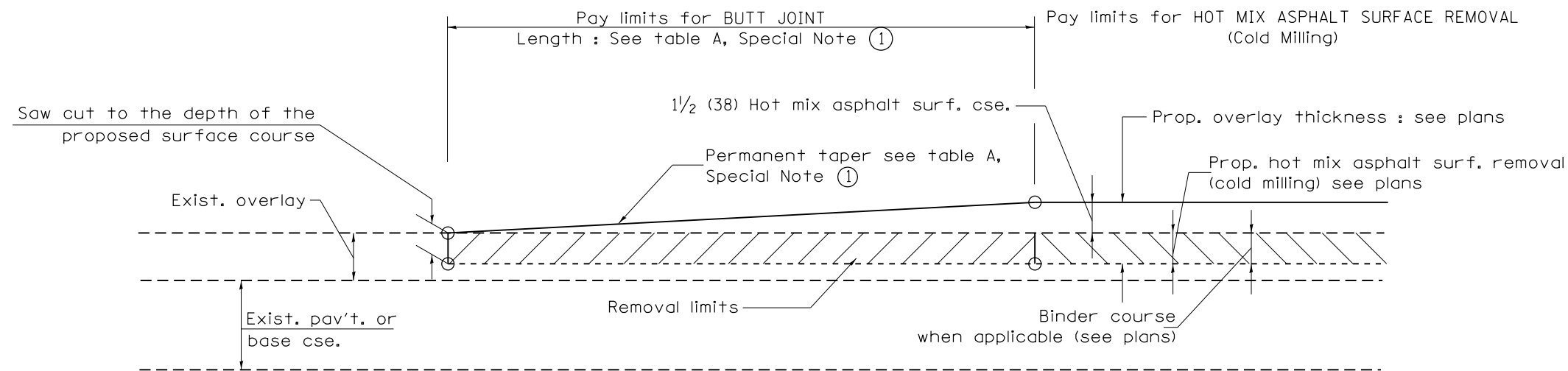
24" SOLID WHITE			
STOP BAR (STA. 83 + 80 RT)	-	11	FOOT
STOP BAR (STA. 84 + 02 RT)	-	11	FOOT
STOP BAR (STA. 84 + 07 RT)	-	19	FOOT
STOP BAR (STA. 83 + 93 LT)	-	19	FOOT
TOTAL		60	FOOT

PAVEMENT MARKING LEGEND

- ① MODIFIED URETHANE PAVEMENT MARKING - LINE 4" WHILE SKIP DASH
- ② MODIFIED URETHANE PAVEMENT MARKING - LINE 4" YELLOW SOLID
- ③ MODIFIED URETHANE PAVEMENT MARKING - LINE 8" WHITE SOLID
- ④ MODIFIED URETHANE PAVEMENT MARKING - LINE 12" WHITE SOLID
- ⑤ MODIFIED URETHANE PAVEMENT MARKING - LINE 24" WHITE SOLID
- ⑥ MODIFIED URETHANE PAVEMENT MARKING - LETTERS AND SYMBOLS



PAVEMENT MARKING PARKWAY DRIVE (CH 25) SEC. 22-00050-00-RS TAZEWELL COUNTY	
CONTRACT NO.	89863
PROJECT NO.	ELND (118)
JOB NO.	C-94-056-24



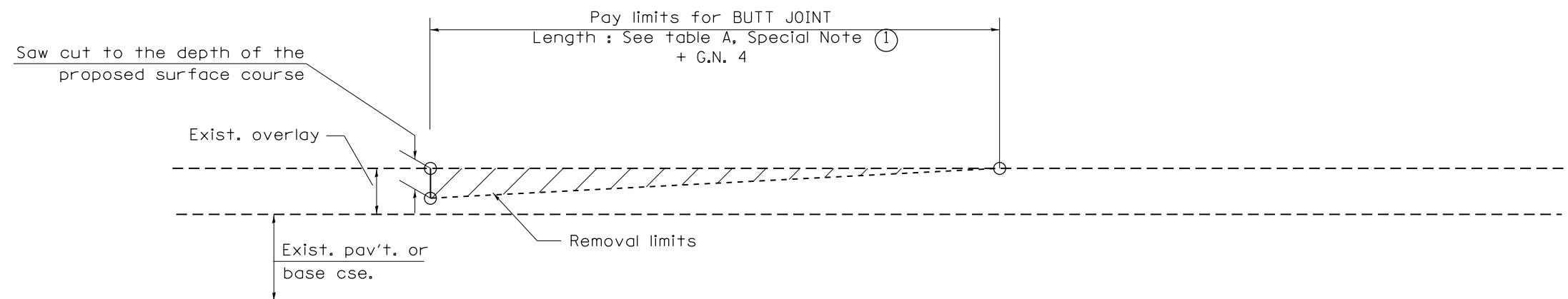
CASE 1 : WITH HOT MIX ASPHALT SURFACE REMOVAL (COLD MILLING)

TABLE A
TAPER RATES

SPECIAL NOTE NUMBER	ELEMENT	MAINLINE INTERSTATES & 4-LANE EXPRESSWAYS	ALL OTHERS
①	BUTT JOINT TAPER RATE	1:480	1:240
②	TEMPORARY RAMP TAPER RATE	1:80	1:40

GENERAL NOTES

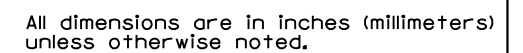
1. The work shall be done in accordance with Article 406.08 and the Special Provision for Butt Joints.
2. The pavement surface to be removed may be either bituminous or P.C. concrete. The work shall be performed in accordance with Article 440.04 and the Special Provisions for Butt Joints.
3. The saw cut joints shall be primed just prior to the placing of bituminous material. The work will be in accordance with the applicable portions of Article 406.05.
4. The length of butt joint is based on the taper rate times change in cold milling depth within the butt joint pay limits, unless otherwise indicated.
5. Temporary ramps are paid for separately and not included in the cost of the butt joints.



CASE 2 : NO HOT MIX ASPHALT SURFACE REMOVAL (COLD MILLING)

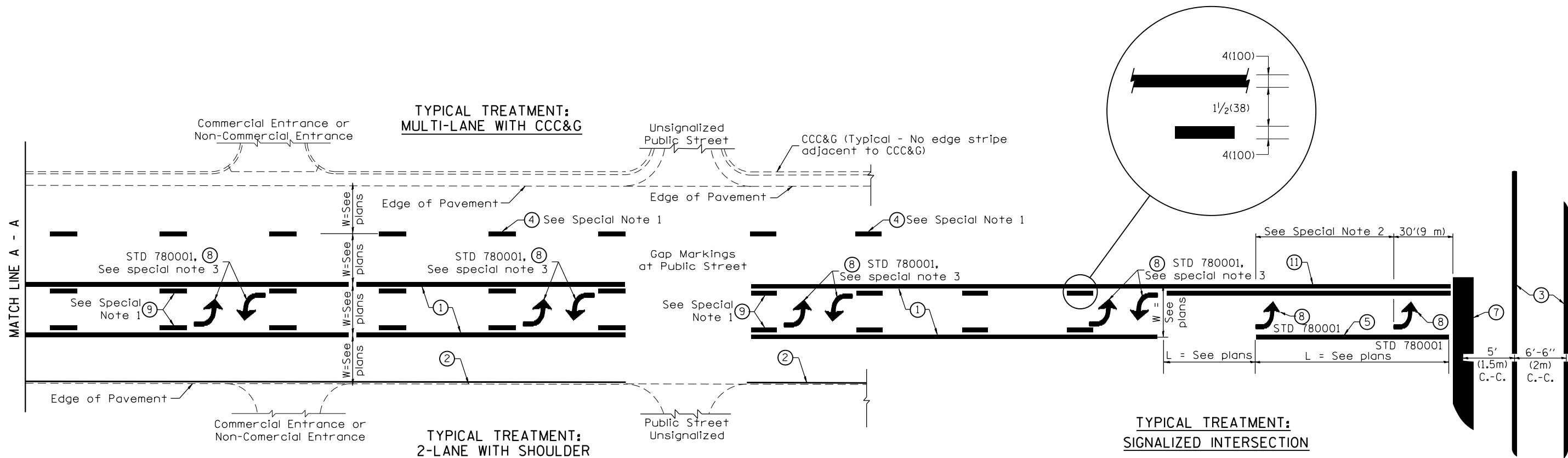
All dimensions are in inches (millimeters)
unless otherwise noted.

01-01-97	RENUM. C-23.01, NEW REVISION BOX	T.P.	08-21-13	MAJOR MODIFICATIONS	R.D.	STATE OF ILLINOIS DEPARTMENT OF TRANSPORTATION	BUTT JOINTS	SHT. 1 OF 3 CADD STD. 406101-D4	FED. ROAD DIST. NO. ILLINOIS FED. AID PROJECT
04-01-97	CORRECTION TO DEPTH	J.A.	04-12-16	MINOR CORRECTIONS	R.D.				
09-15-05	REVISED DESIGNER NOTE	M.M.A.	02-14-17	ADDED NOTE 5	R.D.				
10-16-06	REVISED TO 2007 SPEC.	M.A.	07-16-19	Wording and Spelling corrections	R.D.				
						NOT TO SCALE			

[illegible]

[illegible]

DESIGNER NOTES:
1. Include State Standard 780001 (Typical Pavement Markings)



FLUSH PAVED MEDIAN: TWO-WAY LEFT TURN LANE
WITH ONE-WAY LEFT TURN LANE AT SIGNALIZED INTERSECTION

TYPICAL PAVEMENT MARKING LEGEND

(Note: This is a District Standard Legend.
Some elements may not apply to specific project.)

- ① 4(100) Solid (Yellow)
- ② 4(100) Solid (White)
- ③ 2-6(150) Crosswalk @ 6'-6" (2m)min C.-C. (White)
2-8(200) Crosswalk @ 6'-6" (2m)min C.-C. (White) (When traffic signals are present.)
- ④ 6(150) Skip-Dash (White) (See Special Note 1)
- ⑤ 8(200) Solid (White)
- ⑥ 12(300) Diagonal (White) (Item ⑥ is shown on Std. 780001)
- ⑦ 24(600) Stop Bar (White)
- ⑧ Letters & Arrows (See Std. 780001 and Special Notes 2 & 3)
- ⑨ 4(100) Skip-Dash (Yellow) (See Special Note 1)
- ⑩ 12(300) Diagonal (Yellow) (See Table A)
- ⑪ 4(100) Double Solid (Yellow)

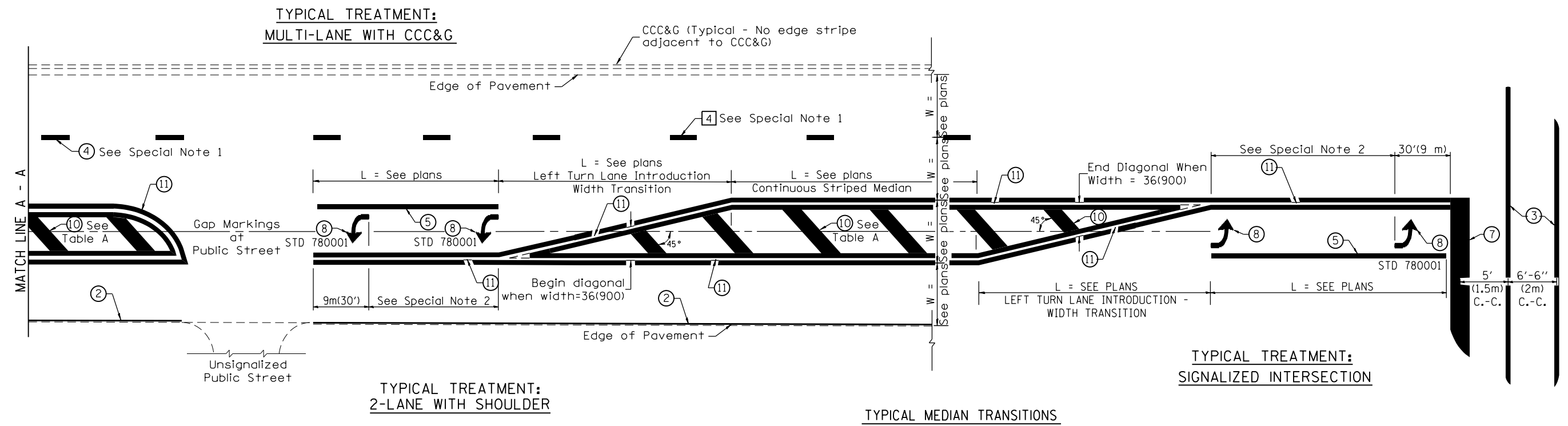
SPECIAL NOTES

- Skip-Dash markings will be centered between both ends of city blocks and shall be placed in alignment transversely across the pavement.
- The following shall apply to arrows located in one-way left turn lanes:
 - A minimum of two (2) arrows is required.
 - The maximum spacing between arrows is 80' (24 m).
 - Arrows shall be evenly spaced if three (3) or more are required.
- The following shall apply to arrow pairs located in two-way left turn lanes:
 - A minimum of two (2) arrow pairs is required.
 - The maximum spacing between arrow pairs is 200' (61 m).
 - Arrow pairs shall be evenly spaced if three (3) or more are required.
 - The spacing between Bi Directional Left Turn Arrows is 33' (10 m).

GENERAL NOTES

- Refer to State Standard 780001 for additional Pavement Markings including letters & arrows.
- See Plans for Pavement Markings adjacent to curbed islands and medians, and through lane reductions.
- Refer to Article 780.13 for letter, number and symbol areas (sq. ft.).
- Areas are grooved 1" beyond each edge for the following symbols:
Through Arrow= 14.8 sq. ft.
Large Left or Right Arrow= 21.9 sq. ft.
2 Arrow Combination Left (or Right) and Through= 34.9 sq. ft.
Wrong Way Arrow= 29.5 sq. ft.
Railroad Crossing Symbol= 69.8 sq. ft.
(For further information, refer to BDE Special Provision: Grooving for Recessed Pavement Markings)

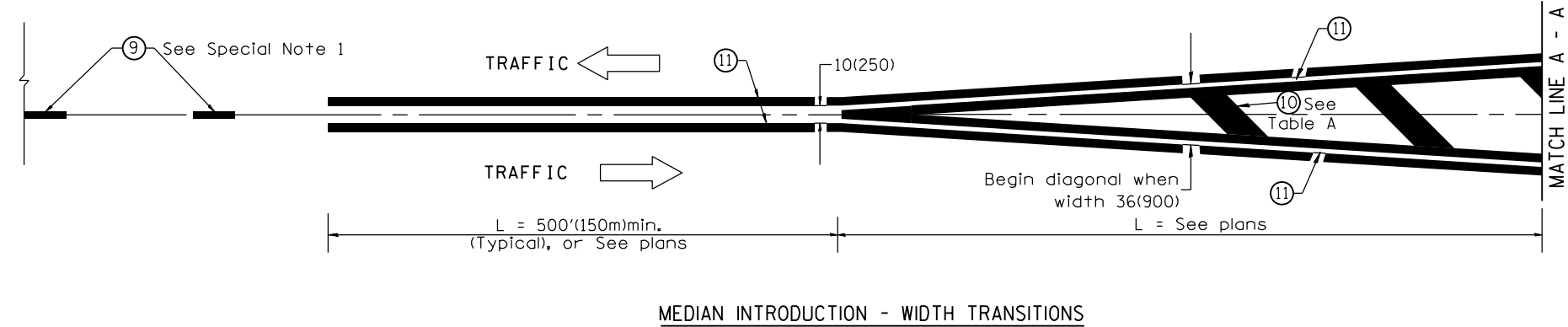
01-01-97	RENUM. F-8.03, NEW REVISION BOX	T.P.	10-16-06	REVISED TO 2007 SPEC.		STATE OF ILLINOIS DEPARTMENT OF TRANSPORTATION	TYPICAL PAVEMENT MARKINGS	SHT. 1 OF 2 CADD STD. 780001-D4	F.A. RTE.	SECTION	COUNTY	TOTAL SHEETS	SHEET NO.
02-07-97	ADD BI DIRECTIONAL DIMENSION	J.A.	2/29/16	ADDED GROOVING AREAS	R.D.					22-00050-00-RS	TAZEWELL	11	10
10-97	CORRECT BI DIRECTIONAL DIMENSION	J.A.	07-16-19	SPELLING CORRECTIONS	R.D.								
08-02	ADD CROSSWALK DMNS. WITH T.S.	M.A.							FED. ROAD DIST. NO.	ILLINOIS	FED. AID PROJECT		



FLUSH PAVED MEDIAN: RESTRICTED LEFT TURN LANE

TABLE A
RECOMMENDED SPACING BETWEEN DIAGONAL LINES

SPEED LIMIT RANGE	CONTINUOUS	INTERSECTION CHANNELIZATION (Includes Width Transitions for Median and Left Turn Lane Introductions)
Less Than 30 mph (50 km/h)	50' (15m)	15' (5m)
30 - 45 mph (50 - 70 km/h)	75' (23m)	20' (6m)
Over 45 mph (70 km/h)	150' (46m)	30' (9m)



All dimensions are in inches (millimeters) unless otherwise noted.