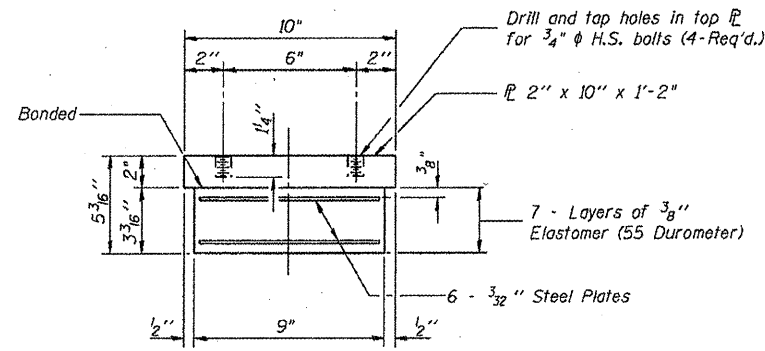
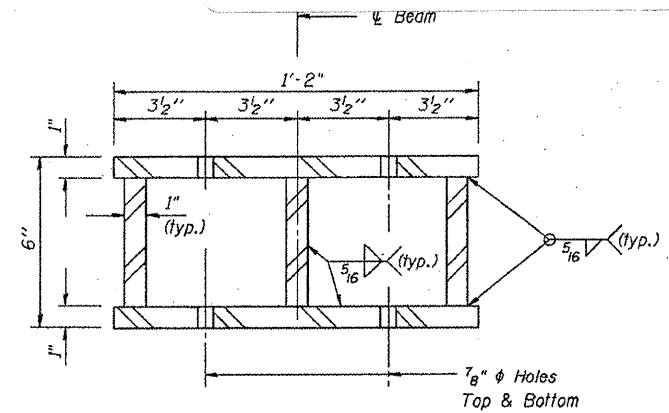
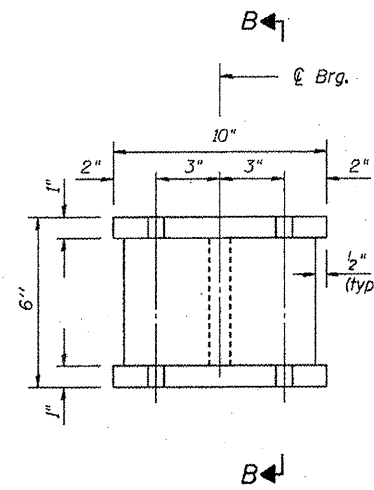


TYPE I ELASTOMERIC EXP. BRG. AT ABUTMENTS

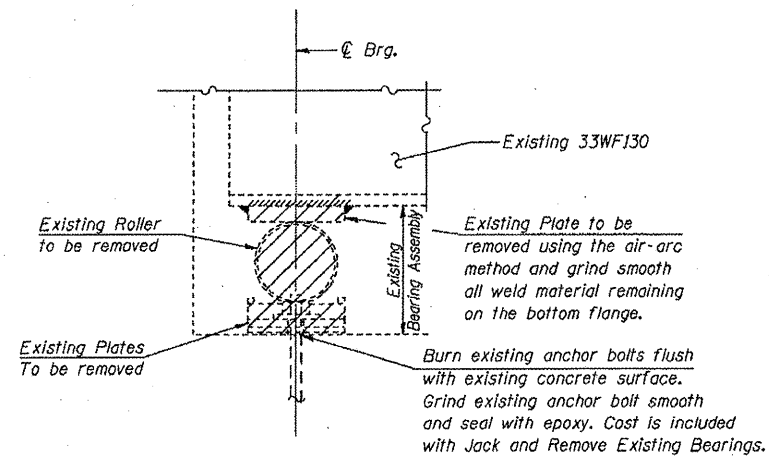


Note: Shim plates shall not be placed under Bearing Assembly.

FILL P's AT BOTH ABUTMENTS

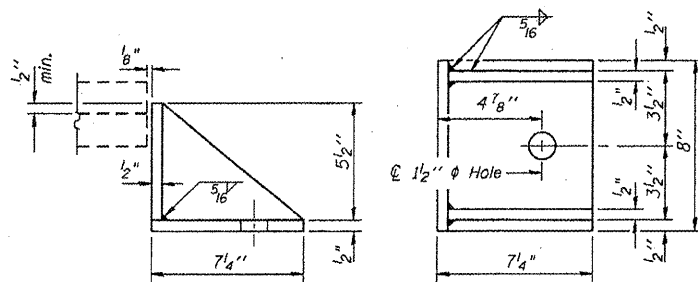
	Beam 1A	Beams 1 thru 6	Beam 6A
Thickness	—	$\frac{3}{4}$ "	1 $\frac{1}{2}$ "

Dimension same as top bearing plate.



EXISTING BEARING REMOVAL AT ABUTS

@ Reaction @ Abuts. = 4 kips (Wt. of steel only)
Min. Jack Capacity @ Abuts. = 3 tons



Equivalent rolled angle with stiffeners will be allowed in lieu of welded plates.

DESIGNED	Ruben V. Boehler
CHECKED	Tim S. Howard
DRAWN	TSH / RVB
CHECKED	Michael D. Cummins

BILL OF MATERIAL

Item	Unit	Total
Elastomeric Bearing Assembly Type I	Each	16
Jack and Remove Existing Bearings	Each	12

BEARING DETAILS ABUTMENTS

IL ROUTE 15 OVER SEVEN MILE CREEK
F.A.P. ROUTE 821 SECTION (15-2)BR
JEFFERSON COUNTY
STA. 129+81.00
S.N. 041-0027

BRIDGE NO. 2

CUMMINS ENGINEERING CORPORATION

JOB #: 2175
FILE: 2175brg
DATE: 4/10/06