

STATE OF ILLINOIS
DEPARTMENT OF TRANSPORTATION

VAR. RTE.	SECTION	COUNTY	TOTAL SHEETS	SHEET NO.
VAR.	2020-229-BP	COOK	18	1
		ILLINOIS	CONTRACT NO. 62M90	

D-91-016-21

FOR INDEX OF SHEETS, SEE SHEET NO. 2

IMPROVEMENTS ARE LOCATED IN THE VILLAGES OF
BURNHAM AND TINLEY PARK

TRAFFIC DATA:

I-80
2019 ADT = 124,100
POSTED SPEED LIMIT = 65MPH

RIDGELAND AVENUE
2018 ADT = 4,550
POSTED SPEED LIMIT = 45MPH

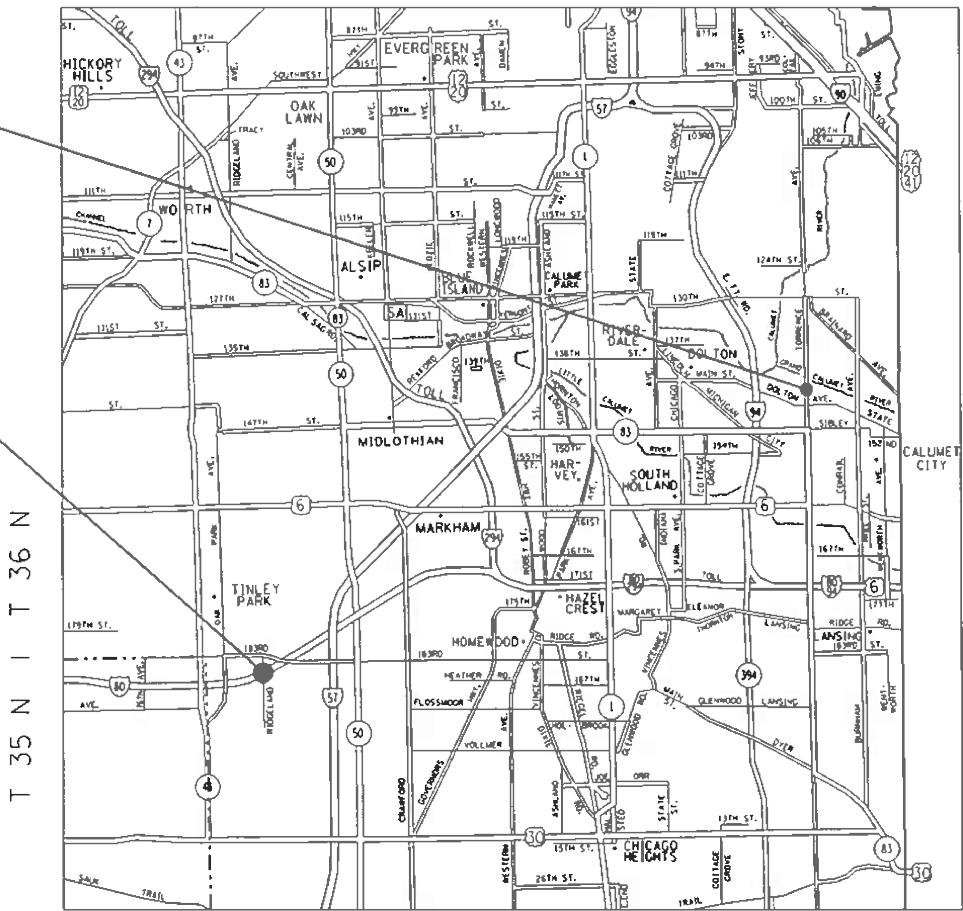
TORRENCE AVENUE
2018 ADT = 17,500
POSTED SPEED LIMIT = 40MPH

PROPOSED
HIGHWAY PLANS

VARIOUS ROUTES
VARIOUS LOCATIONS
SECTION: 2020-229-BP
BRIDGE PAINTING
COOK COUNTY

C-91-015-21

R 13 E | R 14 E | R 15 E



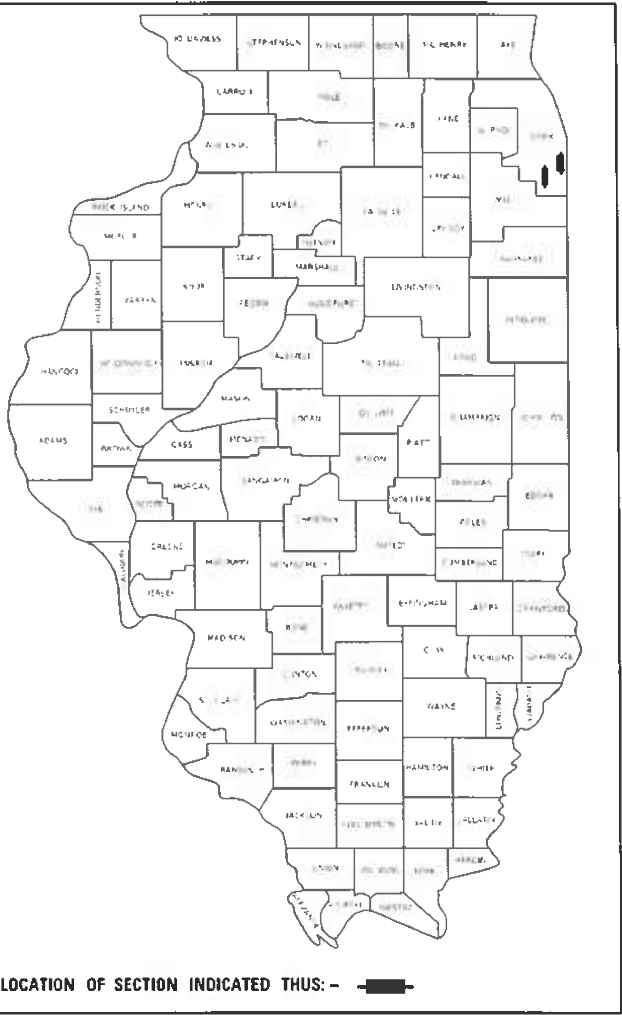
IMPROVEMENT LOCATION 2:
TORRENCE AVENUE OVER
CSXT & IHB RR
VILLAGE OF BURNHAM
SN: 016-0935

IMPROVEMENT LOCATION 1:
I-80 AT RIDGELAND AVENUE
VILLAGE OF TINLEY PARK
SN: 016-0718

J.U.I.E.
JOINT UTILITY LOCATION INFORMATION FOR EXCAVATION
1-800-892-0123
OR 811

PROJECT MANAGER: J. ALAIN MIDY (847) 221-3056

CONTRACT NO. 62M90



STATE OF ILLINOIS
DEPARTMENT OF TRANSPORTATION

SUBMITTED October 6, 2020
Anthony J. Ruzhy REGIONAL ENGINEER
December 4, 2020
Scott A. Elk ENGINEER OF DESIGN AND ENVIRONMENT
December 4, 2020
Samuel J. Jan DIRECTOR OF HIGHWAYS PROJECT IMPLEMENTATION 13

PRINTED BY THE AUTHORITY
OF THE STATE OF ILLINOIS

INDEX OF SHEETS

1. TITLE SHEET
2. INDEX OF SHEETS, STATE STANDARDS,
GENERAL NOTES AND GENERAL PAINT NOTES
3. SUMMARY OF QUANTITIES
- 4-6. LOCATION 1 (SN 016-0718)
- 7-13. LOCATION 2 (SN 016-0934)
14. ENTRANCE AND EXIT RAMP CLOSURE DETAILS (TC-08)
15. TRAFFIC CONTROL DETAILS FOR FREEWAY SINGLE LANE
AND MULTI-LANE WEAVE (TC-09)
16. TRAFFIC CONTROL AND PROTECTION FOR SIDE ROADS,
INTERSECTIONS, AND DRIVEWAYS (TC-10)
17. TRAFFIC CONTROL FOR FREEWAY SHOULDER CLOSURES
AND PARTIAL RAMP CLOSURES (TC-17)
18. ARTERIAL ROAD INFORMATION SIGN (TC-22)

GENERAL NOTES

1. BEFORE STARTING ANY EXCAVATION, THE CONTRACTOR SHALL CALL “J.U.L.I.E.” (800) 892-0123 OR 811 FOR FIELD LOCATIONS OF BURIED ELECTRIC, TELEPHONE AND GAS UTILITIES. (48 HOUR NOTIFICATION IS REQUIRED).
3. THE CONTRACTOR SHALL COORDINATE CONSTRUCTION ACTIVITIES WITH UTILITY COMPANIES, THE VILLAGES OF TINLEY PARK AND BURNHAM.
4. IT SHALL BE THE CONTRACTOR’S RESPONSIBILITY TO PROTECT AND PRESERVE THE EXISTING BRIDGE LIGHTING AT ANY LOCATIONS THAT LIGHTING IS ENCOUNTERED ADJACENT TO AN AREA TO BE CLEANED AND PAINTED.
5. IT SHALL BE THE CONTRACTOR’S RESPONSIBILITY TO VERIFY ALL THE DIMENSIONS & CONDITIONS EXISTING IN THE FIELD PRIOR TO CONSTRUCTION & ORDERING OF MATERIALS.
6. THE CONTRACTOR WILL NOT BE ALLOWED TO SET UP A YARD OR FIELD OFFICE ON STATE PROPERTY WITHOUT WRITTEN PERMISSION FROM THE DEPARTMENT.
7. THESE PLANS HAVE BEEN PREPARED FROM NOTES RECEIVED FROM THE BUREAU OF MAINTENANCE BRIDGE INSPECTORS.
8. THE CONTRACTOR SHALL CONTACT THE DISTRICT ONE TRAFFIC CONTROL SUPERVISOR AT KALPANA.KANNAN-HOSADURGA@ILLINOIS.GOV FOR ARTERIALS AND (847) 705-4151 FOR EXPRESSWAYS A MINIMUM OF 72 HOURS IN ADVANCE OF BEGINNING WORK.
9. THE CONTRACTOR SHALL BE REQUIRED TO PROVIDE ACCESS TO ABUTTING PROPERTY AT ALL TIMES DURING THE CONSTRUCTION OF THIS PROJECT.
10. THE “ARTERIAL ROAD INFORMATION SIGN (TC-22)” IS APPLICABLE ONLY TO ARTERIAL ROADS AND SHALL NOT BE APPLIED TO EXPRESSWAYS.
11. PLAN DIMENSIONS AND DETAILS RELATIVE TO EXISTING PLANS ARE SUBJECT TO NOMINAL CONSTRUCTION VARIATIONS. THE CONTRACTOR SHALL FIELD VERIFY EXISTING DIMENSIONS AND DETAILS AFFECTING NEW CONSTRUCTION AND MAKE NECESSARY APPROVED ADJUSTMENTS PRIOR TO CONSTRUCTION OR ORDERING OF MATERIALS. SUCH VARIATIONS SHALL NOT BE CAUSE FOR ADDITIONAL COMPENSATION FOR A CHANGE IN SCOPE OF THE WORK, HOWEVER, THE CONTRACTOR WILL BE PAID FOR THE QUANTITY ACTUALLY FURNISHED BASED AT THE UNIT PRICE BID FOR THE WORK.
12. DO NOT SCALE PLANS FOR CONSTRUCTION DIMENSIONS.
13. THE CONTRACTOR SHALL REQUEST AND GAIN APPROVAL FROM THE ILLINOIS DEPARTMENT OF TRANSPORTATION’S EXPRESSWAY TRAFFIC OPERATIONS ENGINEER AT (847-705-4151 OR 4155) OR WWW.IDOTLCS.COM AT LEAST (24) HOURS IN ADVANCE OF ALL DAILY LANE, AND RAMP AND SHOULDER CLOSURES.

GENERAL NOTES FOR PAINT

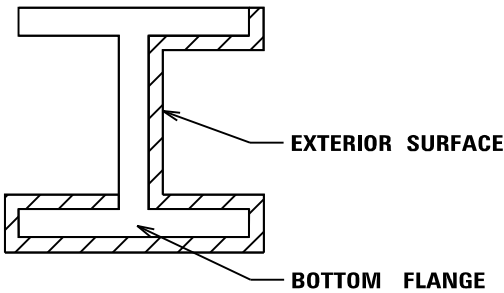
1. CLEANING AND PAINTING OF THE EXISTING STRUCTURAL STEEL SHALL BE AS SPECIFIED IN THE SPECIAL PROVISION FOR “CLEANING AND PAINTING EXISTING STEEL STRUCTURES”.
2. THE AREAS DESIGNATED SHALL BE CLEANED PER NEAR WHITE BLAST CLEANING - SSPC-SP10.THE AREAS DESIGNATED SHALL BE PAINTED ACCORDING TO THE REQUIREMENTS OF PAINT SYSTEM 1 -OZ/E/U. THE COLOR OF THE FINAL FINISH COAT FOR ALL INTERIOR STEEL SURFACES SHALL BE GRAY, MUNSELL NO 5B 7/1. THE COLOR OF THE FINAL FINISH COAT FOR EXTERIOR AND BOTTOM FLANGE OF THE FASCIA BEAMS SHALL BE REDDISH BROWN, MUNSELL NO 2.5YR 3/4.
3. A MINIMUM OF 1 AIR MONITORS AT LOCATION 1 AND 1 AT LOCATION 2 WILL BE REQUIRED TO MONITOR ABRASIVE BLASTING OPERATIONS.SEE SPECIAL PROVISIONS FOR “CONTAINMENT AND DISPOSAL OF LEAD PAINT CLEANING RESIDUES”
4. ALL ITEMS (SUCH AS, BUT NOT LIMITED TO: CONDUITS, BRACKETS AND DECK DRAINS) ATTACHED TO OUTSIDE OF THE FASCIA BEAMS SHOULD BE CLEANED AND PAINTED.
5. LOCATION 1 (SN 016-0718): ALL BEAMS, BEARINGS AND OTHER STRUCTURAL STEEL, SHALL BE CLEANED PER NEAR WHITE BLAST CLEANING SSPC-SP10.
6. LOCATION 2 (SN 016-0935): (4 DECK JOINT OPENINGS) ALL BEAMS, BEARINGS AND OTHER STRUCTURAL STEEL WITHIN 5 FEET (MEASURED ALONG THE BEAM) OF EITHER SIDE OF ALL DECK JOINTS, SHALL BE CLEANED PER NEAR WHITE BLAST CLEANING SSPC-SP10. THE EXTERIOR SURFACES AND TOP AND BOTTOM OF THE BOTTOM FLANGE OF THE FASCIA BEAMS OUTSIDE THE DECK JOINTS FOR THE LENGTH OF THE BRIDGE (SEE FIGURE 1) SHALL BE CLEANED PER NEAR WHITE BLAST CLEANING SSPC-SP10.

STATE STANDARDS

STANDARD NO.

DESCRIPTION

- 701006-05 OFF-ROAD OPERATIONS, 2L, 2W, 15’ TO 24’’ FROM PAVEMENT EDGE
- 701101-05 OFF-ROAD OPERATIONS, MULTILANE, 15’ TO 24’’ FROM PAVEMENT EDGE
- 701106-02 OFF-ROAD OPERATIONS, MULTILANE, MORE THAN 15’ AWAY
- 701301-04 LANE CLOSURE, 2L, 2W, SHORT TIME OPERATIONS
- 701400-10 APPROACH TO LANE CLOSURE, FREEWAY/EXPRESSWAY
- 701401-12 LANE CLOSURE, FREEWAY/EXPRESSWAY
- 701411-09 LANE CLOSURE, MULTILANE, AT ENTRANCE OR EXIT RAMP, FOR SPEEDS ≥ 45 MPH
- 701428-01 TRAFFIC CONTROL, SETUP AND REMOVAL, FREEWAY/EXPRESSWAY
- 701446-11 TWO LANE CLOSURE, FREEWAY/EXPRESSWAY
- 701501-06 URBAN LANE CLOSURE, 2L ,2W, UNDIVIDED
- 701606-10 URBAN SINGLE LANE CLOSURE, MULTILANE, 2W WITH MOUNTABLE MEDIAN
- 701801-06 SIDEWALK, CORNER OR CROSSWALK CLOSURE
- 701901-08 TRAFFIC CONTROL DEVICES



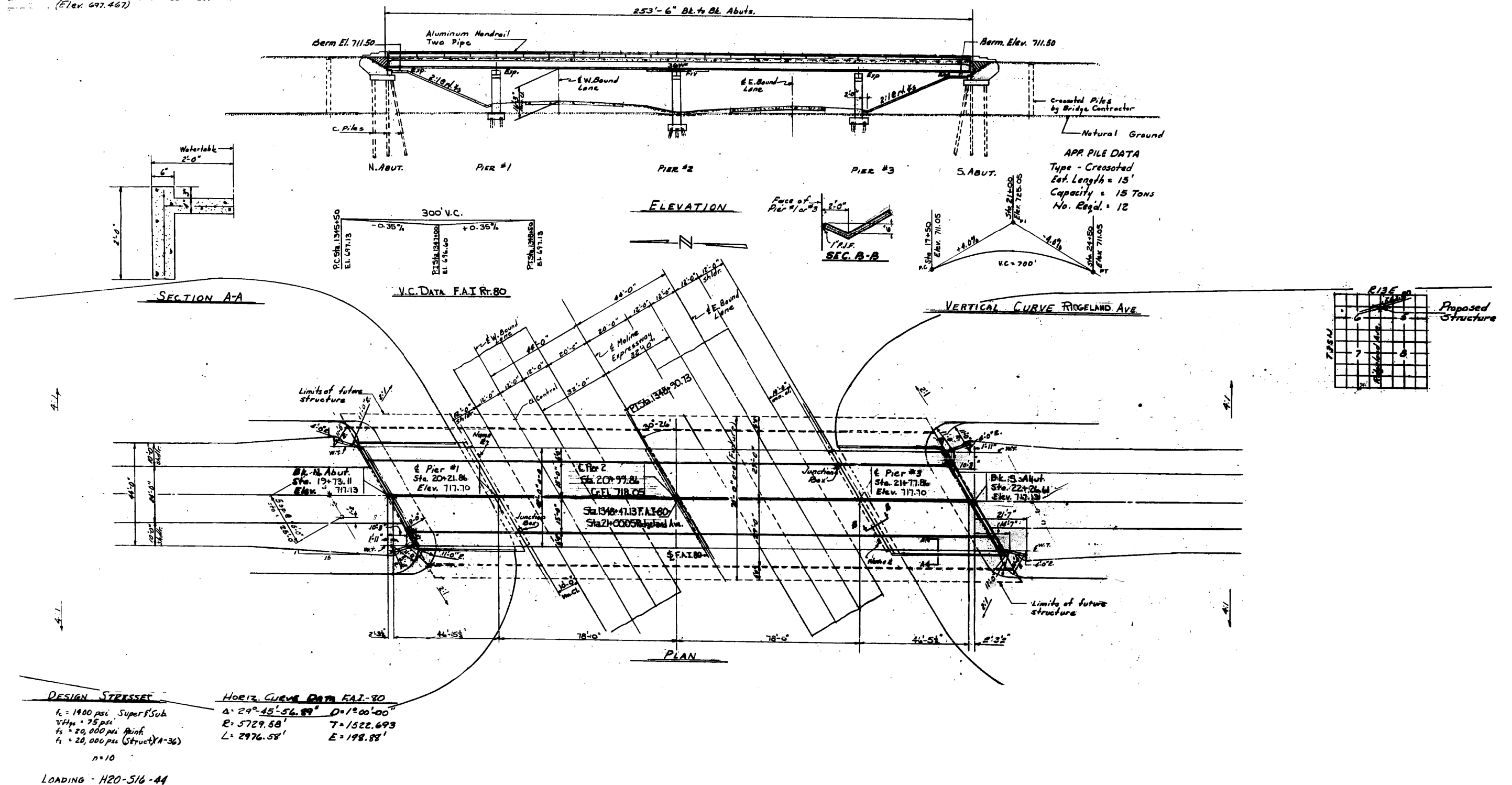
FASCIA BEAM PAINTING DETAIL
FIGURE 1

 SURFACE TO BE CLEANED AND PAINTED

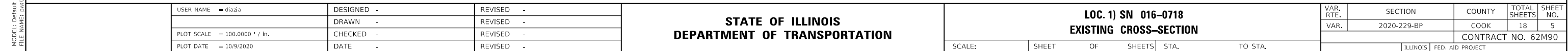
FILE NAME = pwt\planroom.dot\illinois.gov\FWIDOT\Documents\IDOT Offices\District 1\Projects\DI22618-01\Design\DI22618-sht-plan.dgn	USER NAME = diazia	DESIGNED -	REVISED -	STATE OF ILLINOIS DEPARTMENT OF TRANSPORTATION	INDEX OF SHEETS, STATE STANDARDS, GENERAL NOTES AND GENERAL PAINT NOTES			VAR. RTE.	SECTION	COUNTY	TOTAL SHEETS	SHEET NO.
			REVISED -					VAR.	2020-229-BP	COOK	18	2
	PLOT SCALE = 100.0995 ' / in.	CHECKED -	REVISED -					CONTRACT NO. 62M90				
	PLOT DATE = 11/20/2020	DATE -	REVISED -					ILLINOIS FED. AID PROJECT				
Default					SCALE:	SHEET 1	OF 1	SHEETS	STA.	TO STA.		

SUMMARY OF QUANTITIES				URBAN TOTAL QUANTITIES	CONSTRUCTION TYPE CODE				
CODE NO	ITEM	UNIT	0013 BRIDGE 1 016-0718 100% STATE		0013 BRIDGE 2 016-0935 100% STATE				
67000400	ENGINEER'S FIELD OFFICE, TYPE A	CAL MO	6	3	3				
67100100	MOBILIZATION	L SUM	1	0.5	0.5				
70102620	TRAFFIC CONTROL AND PROTECTION,	L SUM	1	1					
	STANDARD 701501								
70102640	TRAFFIC CONTROL AND PROTECTION,	L SUM	1		1				
	STANDARD 701801								
70200100	NIGHTTIME WORK ZONE LIGHTING	L SUM	1	1					
X7011015	TRAFFIC CONTROL AND PROTECTION	L SUM	1	1					
	(EXPRESSWAYS)								
Z0007101	CONTAINMENT AND DISPOSAL OF LEAD PAINT	L SUM	1	1					
	CLEANING RESIDUES NO. 1								
Z0007102	CONTAINMENT AND DISPOSAL OF LEAD PAINT	L SUM	1		1				
	CLEANING RESIDUES NO. 2								
Z0010501	CLEANING AND PAINTING STEEL BRIDGE NO. 1	L SUM	1	1					
Z0010502	CLEANING AND PAINTING STEEL BRIDGE NO. 2	L SUM	1		1				
Z0030850	TEMPORARY INFORMATION SIGNING	SO FT	51.4		51.4				
Z0048665	RAILROAD PROTECTIVE LIABILITY INSURANCE	L SUM	1		1				
FILE NAME =				USER NAME = dlozla		DESIGNED -		REVISED -	
C:\planroom\dl\Illinois\gov\FWI\DOT\Documents\UDOT - Office\District 1\Projects\DI22618\CADD\Design\DI22618-sheet1.dgn				DRAWN -		CHECKED -		REVISED -	
PLOT SCALE = 100,0000' / 1 in.				DATE -		DATE -		DATE -	
PLOT DATE = 10/9/2020									
STATE OF ILLINOIS DEPARTMENT OF TRANSPORTATION									
SUMMARY OF QUANTITIES									
SCALE: SHEET NO. 1 OF 1 SHEETS STA. TO STA.									
FED. ROAD DIST. NO. 1 (ILLINOIS) FED. AID PROJECT									
REV-SEP									
VAR. RTE. SECTION COUNTY TOTAL SHEETS SHEET NO.									
VAR. 2020-229-BP COOK 18 3									
CONTRACT NO. 62M90									

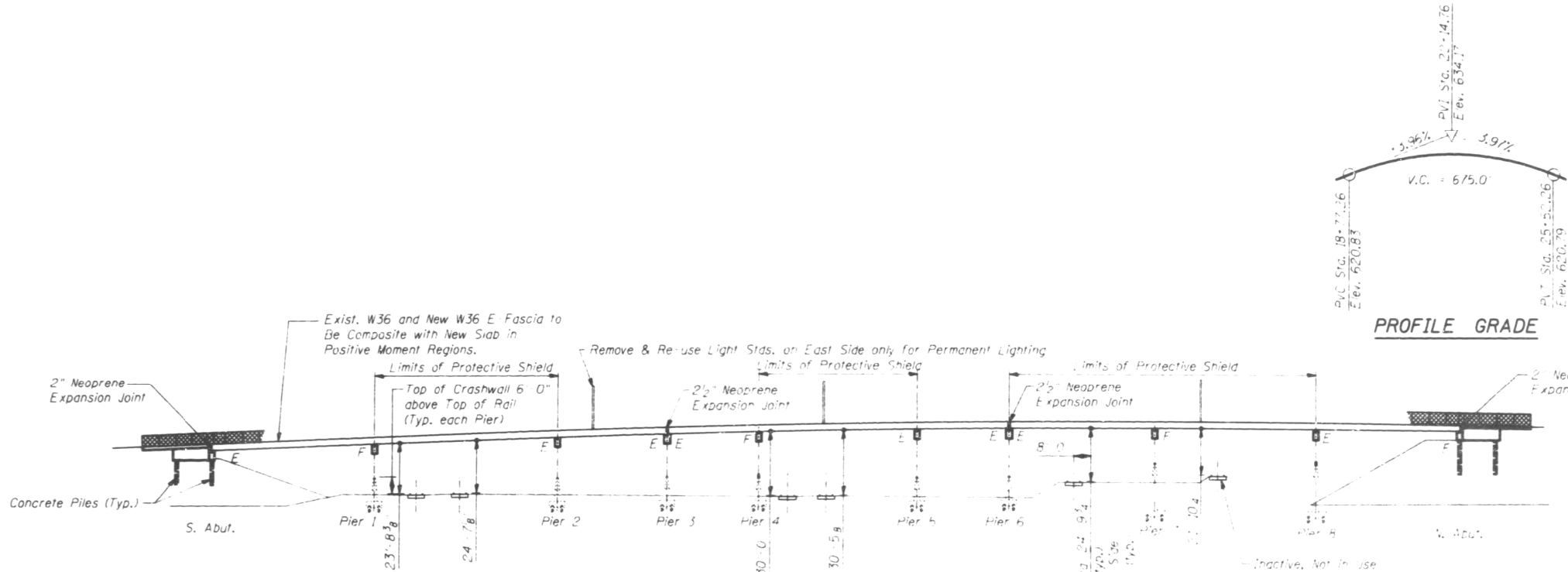
B.M. 39B: Cut in top of West Culvert
Wall along Edgeland Ave.
70' S. of 183rd St. (Elev. 695.810)
B.M. # 41
R.R. Spike in P.P. on East Side of
Edgeland Ave. & Farm Side Drive,
Sta. 39+86 South of 183rd St. -
(Elev. 697.467)



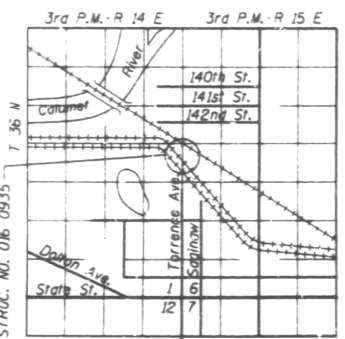
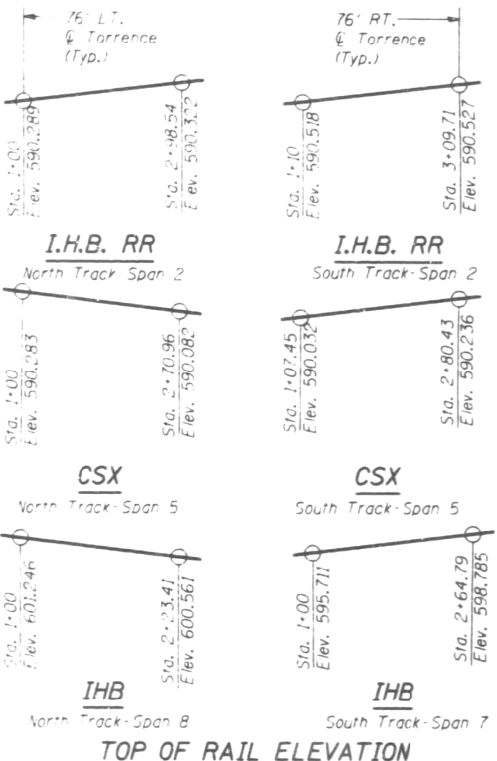
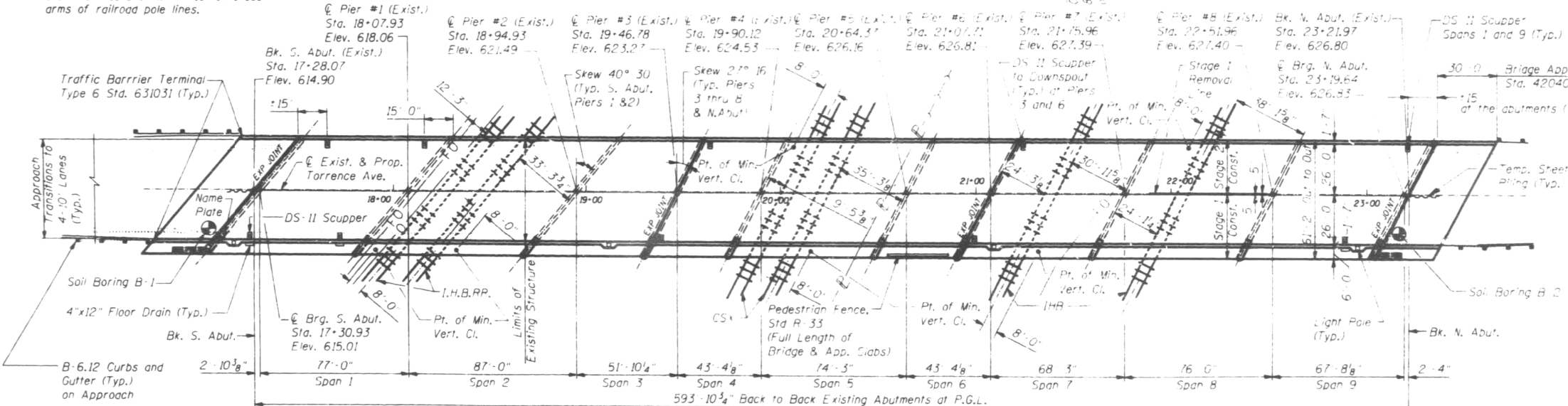
MODEL: Default
FILE NAME: nsw\lanroom_dot_illinois_cour.gov\DOTDocuments\DOT_Offices\District_1\Projects\ID122618\CADD\data\Des\m\ID122618-shr\lane.dgn



FOR INFORMATION ONLY



Note:
No deck drains will be in the spans over the tracks or within 10' of cross arms of railroad pole lines.



STATION 20+25.28
RE-BUILT 200_ BY
STATE OF ILLINOIS
F.A.P. RT. 358 SEC. 1111.1B-1
F.A.P. PROJ.
LOADING HS20
STR. NO. 016-0935

NAME PLATE

DESIGN STRESSES

FIELD UNITS
 $f_c = 3,500$ psi
 $f_y = 36,000$ psi (M270 Grade 36)
 $f_y = 60,000$ psi (Reinforcement)

EXISTING
 $f_y = 33,000$ psi (structural steel)
 $f_y = 40,000$ psi (Reinforcement)
 $f_c = 1,200$ psi (Concrete)

DESIGN SPECIFICATIONS

1996 AASHTO 16th Edition, with 1997 through 2000 & 2002 Interims.

SEISMIC DATA

Seismic Performance Category (SPC) = A
Acceleration coefficient (A) = .04g
Site coefficient (S) = 2.0

LOADING HS20

Allow 25 psf for future wearing surface.

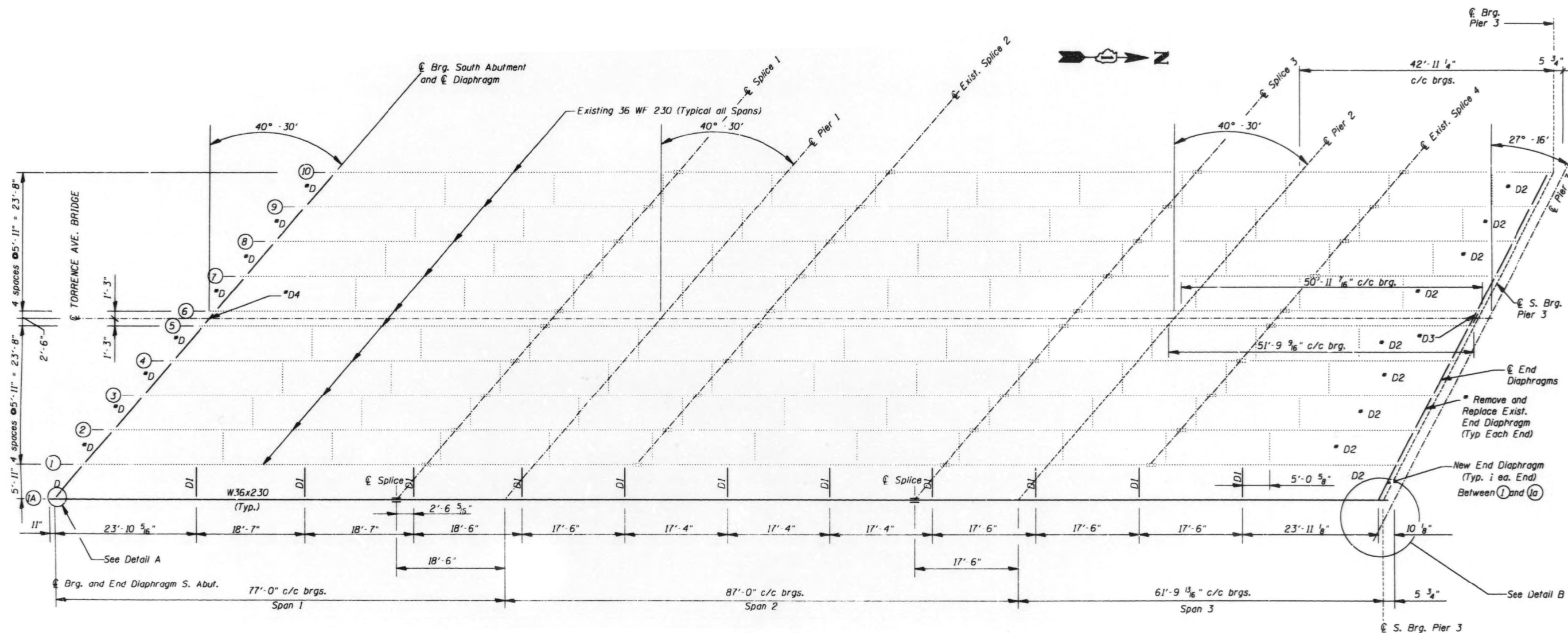
STATE OF ILLINOIS
DEPARTMENT OF TRANSPORTATION

LOC. 2) SN 016-0935
GENERAL PLAN AND ELEVATION

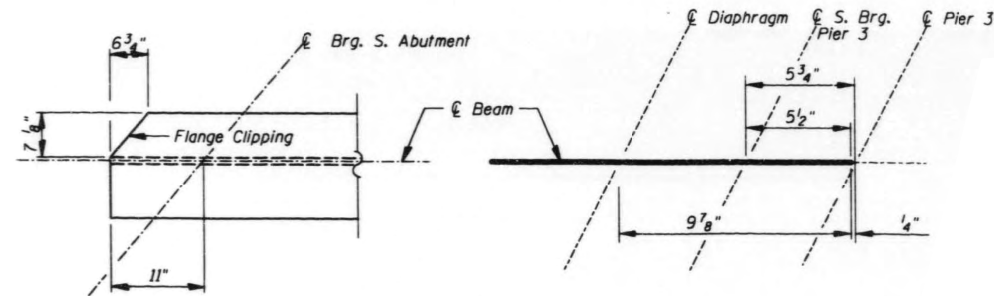
SCALE: SHEET OF SHEETS STA. TO STA.

VAR. RTE.	SECTION	COUNTY	TOTAL SHEETS	SHEET NO.
VAR.	2020-229-BP	COOK	18	7
CONTRACT NO. 62M90				
ILLINOIS FED. AID PROJECT				

FOR INFORMATION ONLY



STEEL FRAMING PLAN



DETAIL A

DETAIL B

MODEL: Default
FILE: \\nrcs-prod\pub\lanroom\dotall\links\gov\p\w\DOT\Documents\DOT - Office\Bldg\1\Projects\122618\CD\Bldg\Design\122618-8-18-2020.dgn

USER NAME = diaza	DESIGNED -	REVISED -
	DRAWN -	REVISED -
PLOT SCALE = 100,0000' / in.	CHECKED -	REVISED -
PLOT DATE = 10/28/2020	DATE -	REVISED -

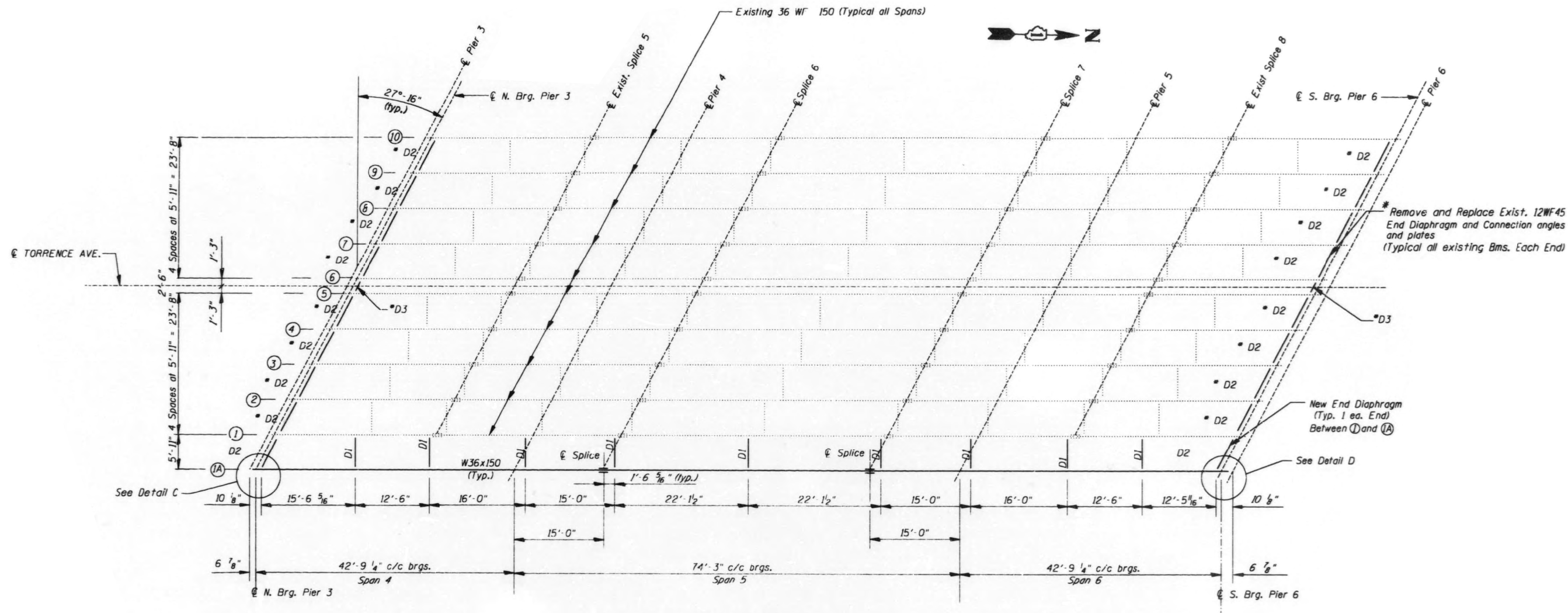
STATE OF ILLINOIS
DEPARTMENT OF TRANSPORTATION

LOC. 2) SN 016-0935
EXISTING STEEL FRAMING PLAN (UNIT 1)

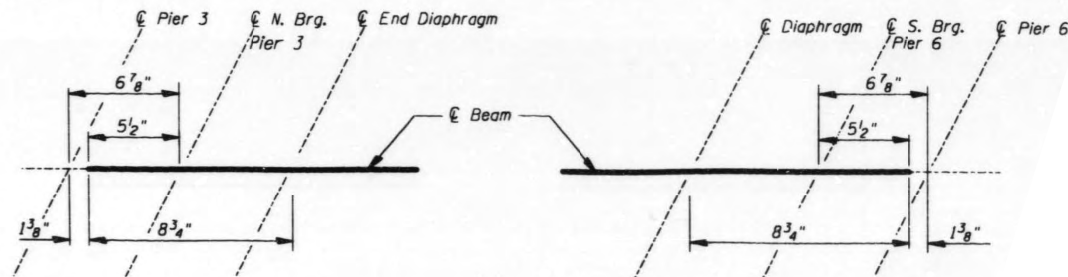
SCALE: SHEET OF SHEETS STA. TO STA.

VAR. RTE.	SECTION	COUNTY	TOTAL SHEETS	SHEET NO.
VAR.	2020-229-BP	COOK	18	8
CONTRACT NO. 62M90				
ILLINOIS FED. AID PROJECT				

FOR INFORMATION ONLY



STEEL FRAMING PLAN



DETAIL C

DETAIL D

MODEL: Default
FILE: \\nrcs\pub\planroom\dat\illinois\2020\229\BP\016-0935\Design\0122618-01\idea.dgn
PROJECT: 0122618-01\idea.dgn

USER NAME = diaza	DESIGNED -	REVISED -
	DRAWN -	REVISED -
PLOT SCALE = 100,0000' / in.	CHECKED -	REVISED -
PLOT DATE = 10/9/2020	DATE -	REVISED -

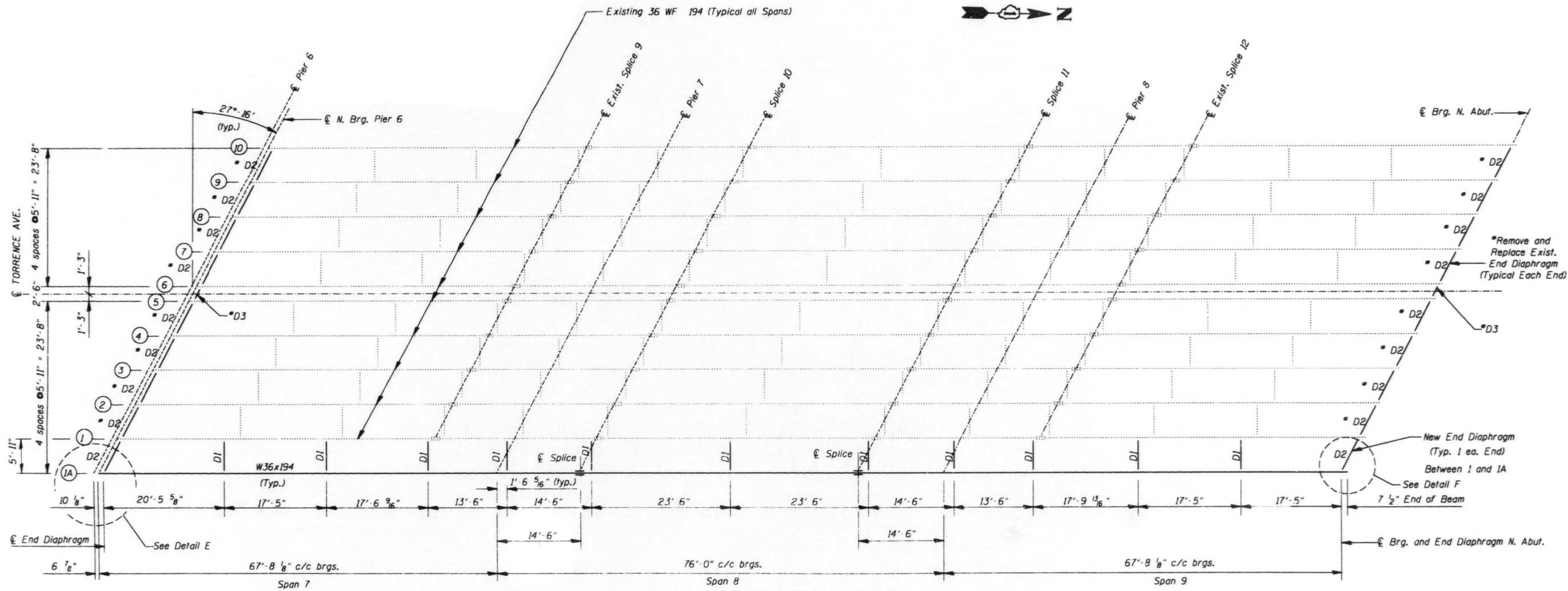
STATE OF ILLINOIS
DEPARTMENT OF TRANSPORTATION

LOC. 2) SN 016-0935
EXISTING STEEL FRAMING PLAN (UNIT 2)

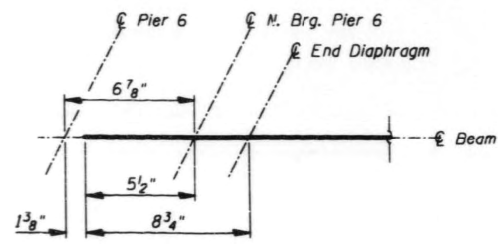
SCALE: SHEET OF SHEETS STA. TO STA.

VAR. RTE.	SECTION	COUNTY	TOTAL SHEETS	SHEET NO.
VAR.	2020-229-BP	COOK	18	9
CONTRACT NO. 62M90				
ILLINOIS FED. AID PROJECT				

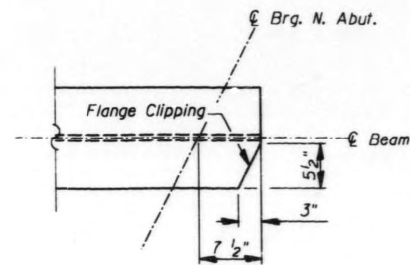
FOR INFORMATION ONLY



STEEL FRAMING PLAN



DETAIL E



DETAIL F

MODEL: Default
FILE: \\nrc\p\pub\lancom\dat\illinois\p\pub\DOT\Documents\DOT - Office\Bldg\1\Projects\122618\CD\Bldg\Design\122618-01\Bldg.dgn

USER NAME = diaza	DESIGNED -	REVISED -
	DRAWN -	REVISED -
PLOT SCALE = 100,0000' / in.	CHECKED -	REVISED -
PLOT DATE = 10/9/2020	DATE -	REVISED -

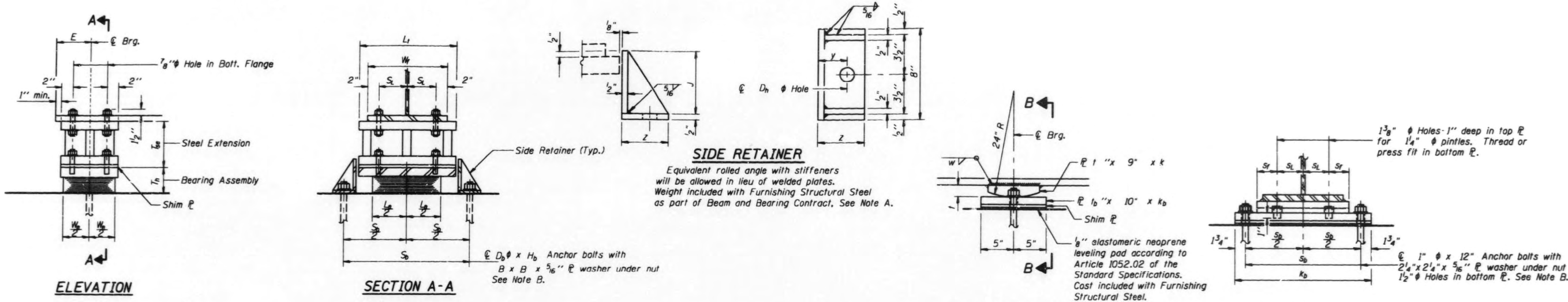
STATE OF ILLINOIS
DEPARTMENT OF TRANSPORTATION

LOC. 2) SN 016-0935
EXISTING STEEL FRAMING PLAN (UNIT 3)

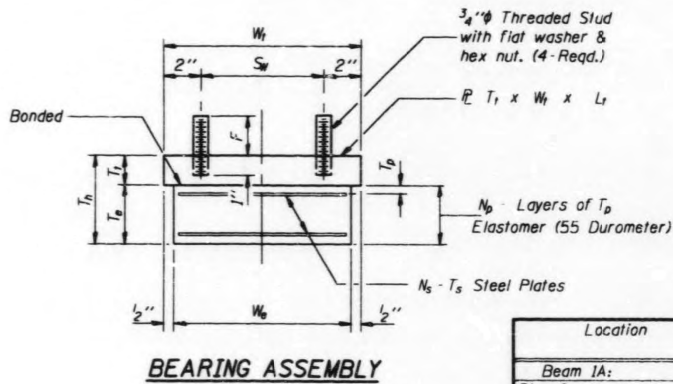
SCALE: SHEET OF SHEETS STA. TO STA.

VAR. RTE.	SECTION	COUNTY	TOTAL SHEETS	SHEET NO.
VAR.	2020-229-BP	COOK	18	10
CONTRACT NO. 62M90				
ILLINOIS FED. AID PROJECT				

FOR INFORMATION ONLY



TYPE I ELASTOMERIC EXP. BRG.

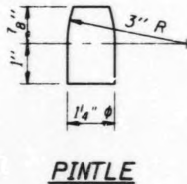


Notes:

For Steel Extension Details See Sheet #35.

Anchor bolts at fixed bearings may be built into the masonry.

See sheet #36 for Anchor Bolt installation.



FIXED BEARING

TABLE OF DIMENSIONS - FIXED BEARINGS

Location	t	k	t _b	k _b	S _b	S _L	S _T	taper (North)	weld w
Beam 1A:									
Pier 1	2 1/4"	18 1/2"	1 3/8"	25 1/2"	22"	4 1/8"	5 1/8"	3/8"	7/16"
Pier 4	2 1/4"	14"	2 1/4"	21"	17 1/2"	3"	4"	3/16"	5/16"
Pier 7	2 1/4"	14"	2 1/4"	21"	17 1/2"	3"	4"	none	5/16"

TABLE OF DIMENSIONS - ELASTOMERIC BEARING ASSEMBLIES - TYPE I

Location	No. Each	Dimension W _e x L _e	W _t	L _t	S _w	W _t	S _L	E	T _D	N _b	T _S	N _S	T _S	T _L	T _H	T _{SS}	Extension Type	F	Bolt ϕ xH D _b xH _b	Hole ϕ D _h	ϕ Washer B	y	z	J	S _b	
Beam 1A:																										
Pier 2	1	11x16	12"	18"	8"	16 1/2"	6 1/4"		1 1/2"	5	1 1/2"	4	3"	2 3/4"	5 3/4"	9 1/2"	Fab.	3"	1 1/4"x15"	1 1/2"	2 3/4"	2 3/4"	4 3/4"	5 5/8"	23"	
North Bearing Pier 3	1	6x10	7"	12"		12"	4"	5 1/2"	1 1/2"	5	1 1/2"	4	1 1/2"	1 3/4"	3 3/4"	7 1/2"	Fab.	2 3/4"	1"x12"	1 1/4"	2 1/4"	2 1/4"	4"	3 3/8"	16 1/2"	
Pier 5	1	10x14	11"	16"	7"	12"	4"		1 1/2"	5	1 1/2"	4	2 1/2"	2 3/4"	5 1/4"	11 1/4"	Fab.	2 3/4"	1 1/4"x15"	1 1/2"	2 1/4"	2 1/4"	4 3/4"	5 1/8"	21"	
North Bearing Pier 6	1	7x12	8"	14"	4"	12 1/2"	4 1/8"	5 1/2"	1 1/2"	5	1 1/2"	4	2 1/4"	2"	4 1/4"	7 1/8"	Fab.	3"	1"x12"	1 1/4"	2 1/4"	2 1/4"	4"	4 1/4"	18 1/2"	
Pier 8	1	11x16	12"	18"	8"	12 1/2"	4 1/8"		1 1/2"	4	1 1/2"	3	2 3/4"	2 3/4"	5"	11 1/4"	Fab.	3"	1 1/4"x15"	1 1/2"	2 3/4"	2 3/4"	4 3/4"	5"	23"	
Beams 1-10:																										
Pier 2	10	11x16	12"	18"	8"	16 1/2"	6 1/4"		1 1/2"	5	1 1/2"	4	3"	2 3/4"	5 3/4"	11 1/4"	Fab.	3"	1 1/4"x15"	1 1/2"	2 3/4"	2 3/4"	4 3/4"	9 1/8"	23"	
Pier 5	10	10x14	11"	16"	7"	12"	4"		1 1/2"	5	1 1/2"	4	2 1/2"	2 3/4"	5 1/4"	11 1/4"	Fab.	2 3/4"	1 1/4"x15"	1 1/2"	2 1/4"	2 1/4"	4 3/4"	11 3/4"	21"	
Pier 8	10	11x16	12"	18"	8"	12 1/2"	4 1/8"		1 1/2"	4	1 1/2"	3	2 3/4"	2 3/4"	5"	11 1/4"	Fab.	3"	1 1/4"x15"	1 1/2"	2 3/4"	2 3/4"	4 3/4"	11 3/4"	23"	

MODEL: Default
FILE: \\nrcs\pub\planroom\dat\illinois\p\w\DOT\Documents\DOT - Office\Bldg\1 - Projects\ID 1226\B\CADD\Bldg\Design\1226-18-elev.dwg
DATE: 10/9/2020

USER NAME = diaza	DESIGNED -	REVISED -
	DRAWN -	REVISED -
PLOT SCALE = 100,0000' / in.	CHECKED -	REVISED -
PLOT DATE = 10/9/2020	DATE -	REVISED -

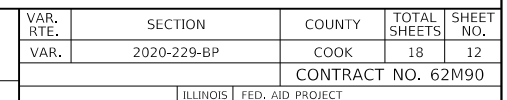
STATE OF ILLINOIS
DEPARTMENT OF TRANSPORTATION

LOC. 2) SN 016-0935
BEARING DETAILS

SCALE: SHEET OF SHEETS STA. TO STA.

VAR. RTE.	SECTION	COUNTY	TOTAL SHEETS	SHEET NO.
VAR.	2020-229-BP	COOK	18	11
CONTRACT NO. 62M90				
ILLINOIS FED. AID PROJECT				

MODEL: Default
FILE NAME: ows:\planroom-dot\llnols.gov\PWIDOT\Documents\IDOT Offices\District 1\Projects\ID122618\CADData\Design\ID122618-eir\ktdge.dgn



FOR INFORMATION ONLY

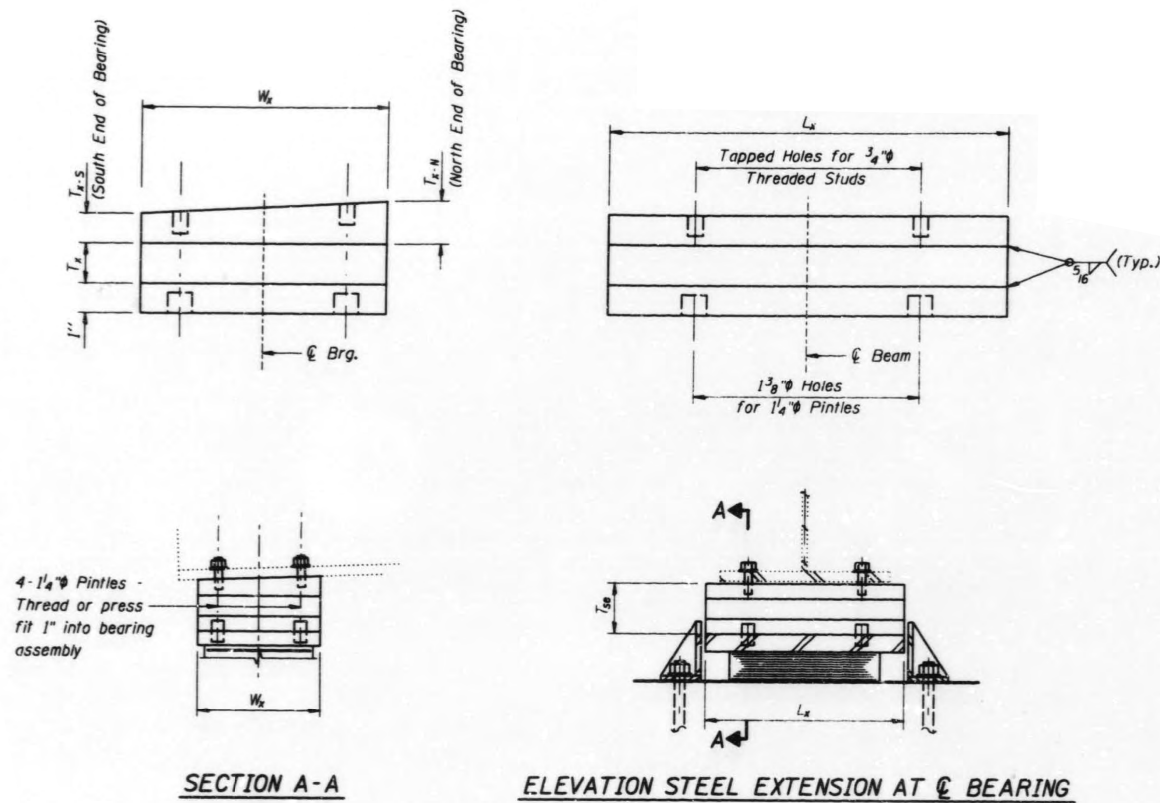


TABLE OF DIMENSIONS - STACKED BEARING EXTENSIONS

Location	W_b	L_x	T_x	T_{x-N}	T_{x-S}
Beam 1A:					
South Bearing Pier 3	8"	16 1/2"	2 1/4"	1 3/8"	1"

BEAM 1A - SEAT ELEVATIONS

South Abutment	Pier 1	Pier 2	Pier 3	Pier 4	Pier 5	Pier 6	Pier 7	Pier 8	North Abutment
608.97	612.51	615.07	617.82	619.57	620.39	621.51	622.55	621.82	621.68

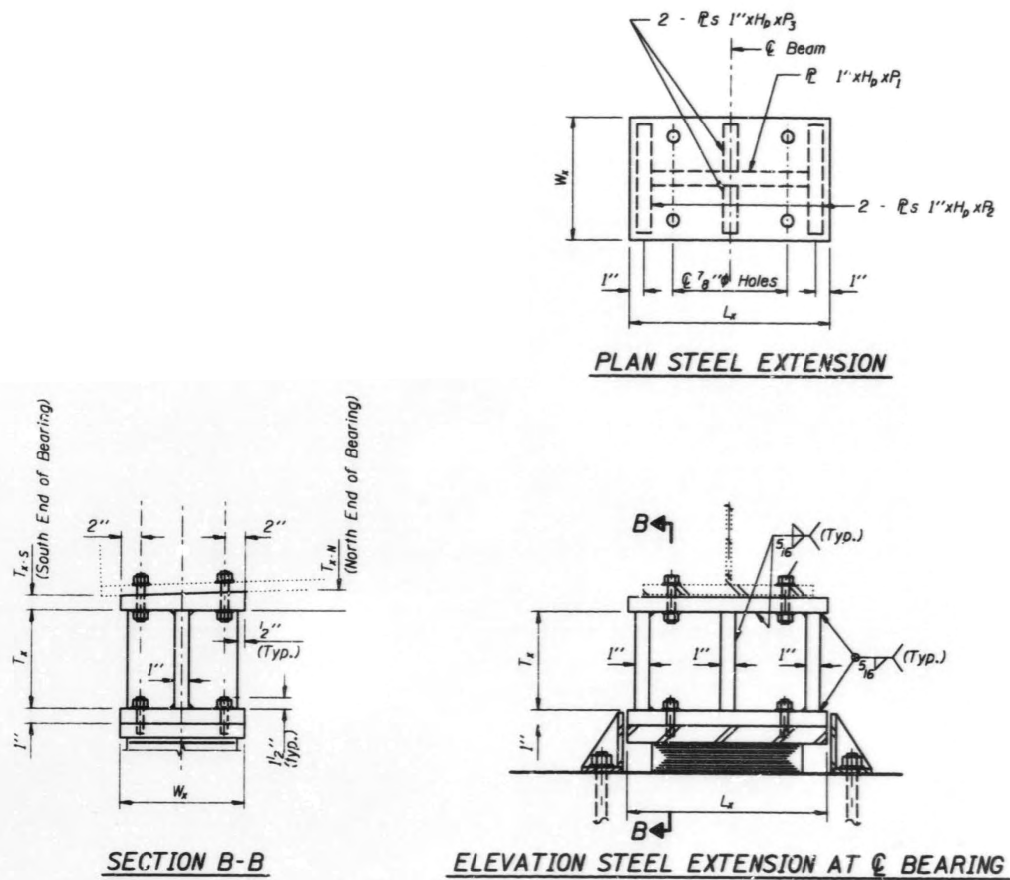


TABLE OF DIMENSIONS - FABRICATED BEARING EXTENSIONS

Location	W_b	L_x	T_x	P_1	P_2	P_3	T_{x-N}	T_{x-S}
Beam 1A:								
South Abutment	8"	16 1/2"	4"	13 1/2"	7"	3"	1 3/8"	1"
Pier 2	12"	18"	7 1/6"	15"	11"	5"	1 3/8"	1"
North Bearing Pier 3	7"	12"	5 1/6"	9"	6"	2 1/2"	1 3/8"	1"
Pier 5	11"	16"	9 1/6"	13"	10"	4 1/2"	1 3/8"	1"
South Bearing Pier 6	8"	12"	4 3/4"	9"	6"	2 1/2"	1 3/8"	1"
North Bearing Pier 6	8"	14"	5 1/8"	11"	7"	3"	1"	1"
Pier 8	12"	18"	9 1/8"	15"	11"	5"	1"	1"
North Abutment	9"	14"	5 1/2"	11"	7"	3"	1"	1"
Beams 1-10:								
Pier 2	12"	18"	9 1/6"	15"	11"	5"	1 3/8"	1"
Pier 5	11"	16"	9"	13"	10"	4 1/2"	1 3/8"	1"
Pier 8	12"	18"	9 1/4"	15"	11"	5"	1"	1"

MODEL: Default
FILE: \\nrc\pub\planroom\dotall\links\gov\p\w\DOT\Documents\DOT - Offices\District 1\Projects\ID 1226\B\CADD\Drawings\DOT 1226-18-elev.dgn

USER NAME = diaza	DESIGNED -	REVISED -
	DRAWN -	REVISED -
PLOT SCALE = 100,0000' / in.	CHECKED -	REVISED -
PLOT DATE = 10/9/2020	DATE -	REVISED -

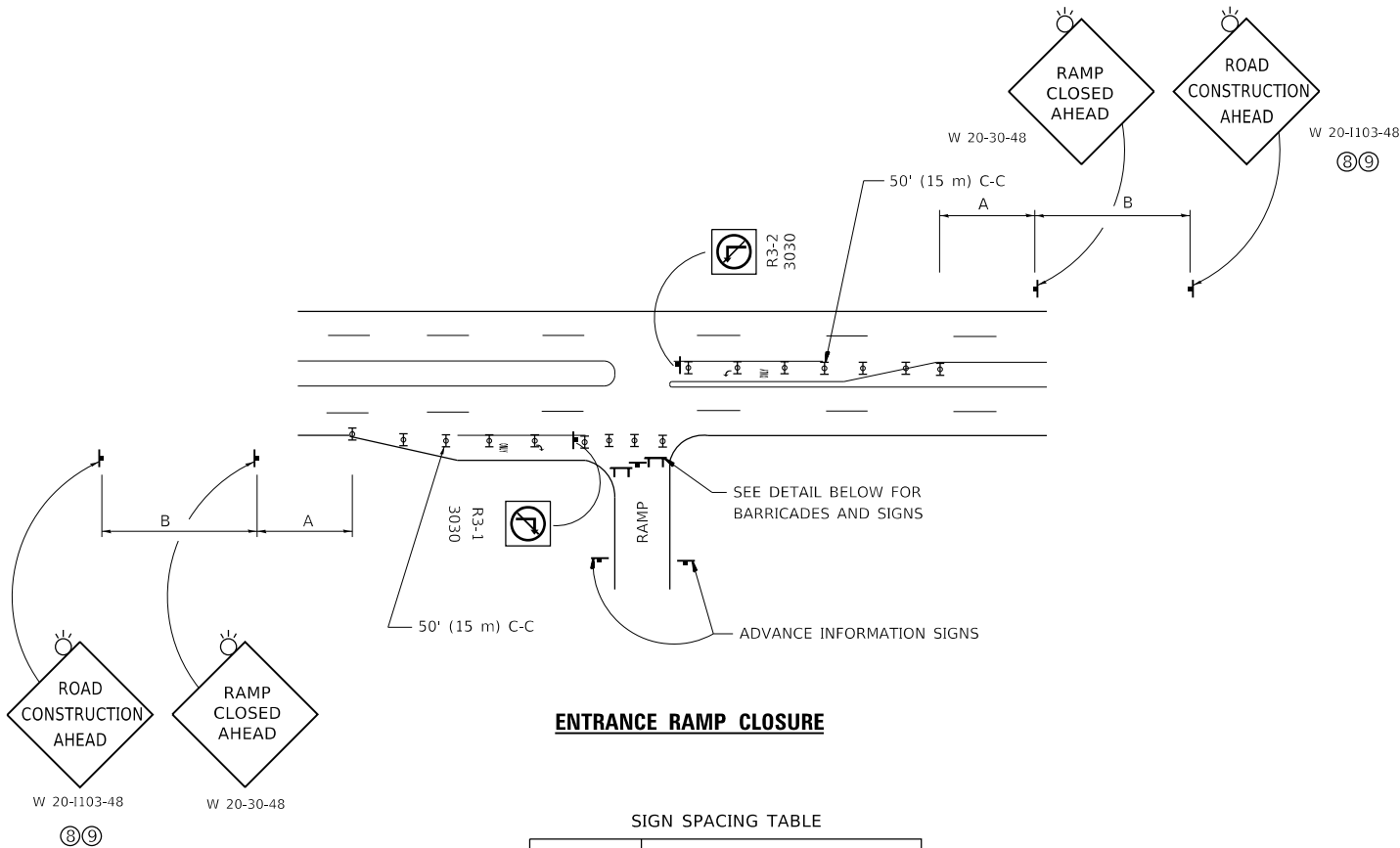
STATE OF ILLINOIS
DEPARTMENT OF TRANSPORTATION

LOC. 2) SN 016-0935
BEARING DETAILS

SCALE: SHEET OF SHEETS STA. TO STA.

VAR. RTE.	SECTION	COUNTY	TOTAL SHEETS	SHEET NO.
VAR.	2020-229-BP	COOK	18	13
CONTRACT NO. 62M90				
ILLINOIS FED. AID PROJECT				

MODEL Default
FILE Name: pavlabanraon.datalinks.southernDOTDocuments\DOT Offices\District 1\Projects\ID122618\CADDData\Design\DIS454.dgn

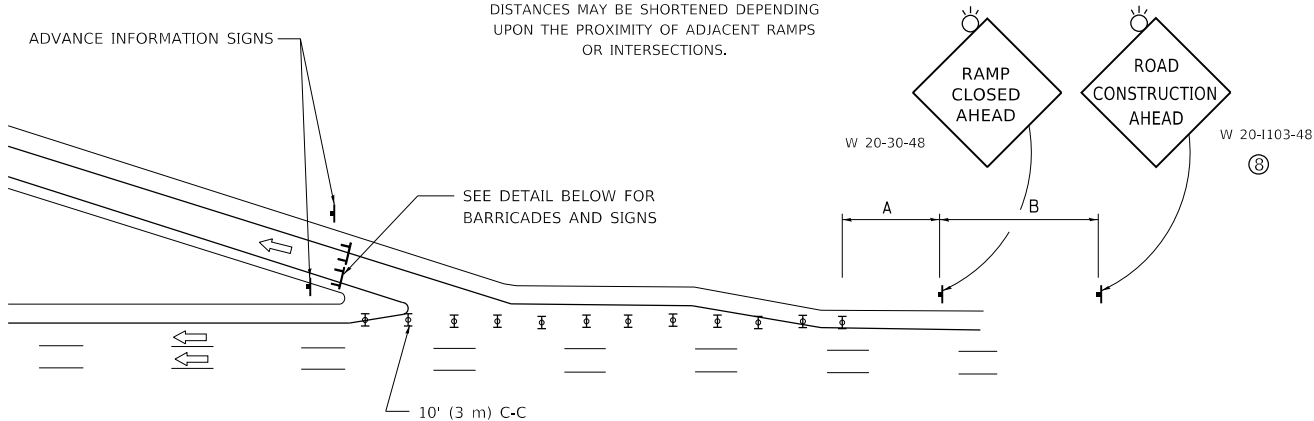


ENTRANCE RAMP CLOSURE

SIGN SPACING TABLE

FACILITY	DISTANCE BETWEEN SIGNS	
	A	B
EXPRESSWAY >24 HOURS	1000' (300 m)	1500' (450 m)
EXPRESSWAY ≤24 HOURS	500' (150 m)	500' (150 m)
ARTERIAL 55 MPH	500' (150 m)	500' (150 m)
ARTERIAL 50-45 MPH	350' (100 m)	350' (100 m)
ARTERIAL <45 MPH	200' (60 m)	200' (60 m)

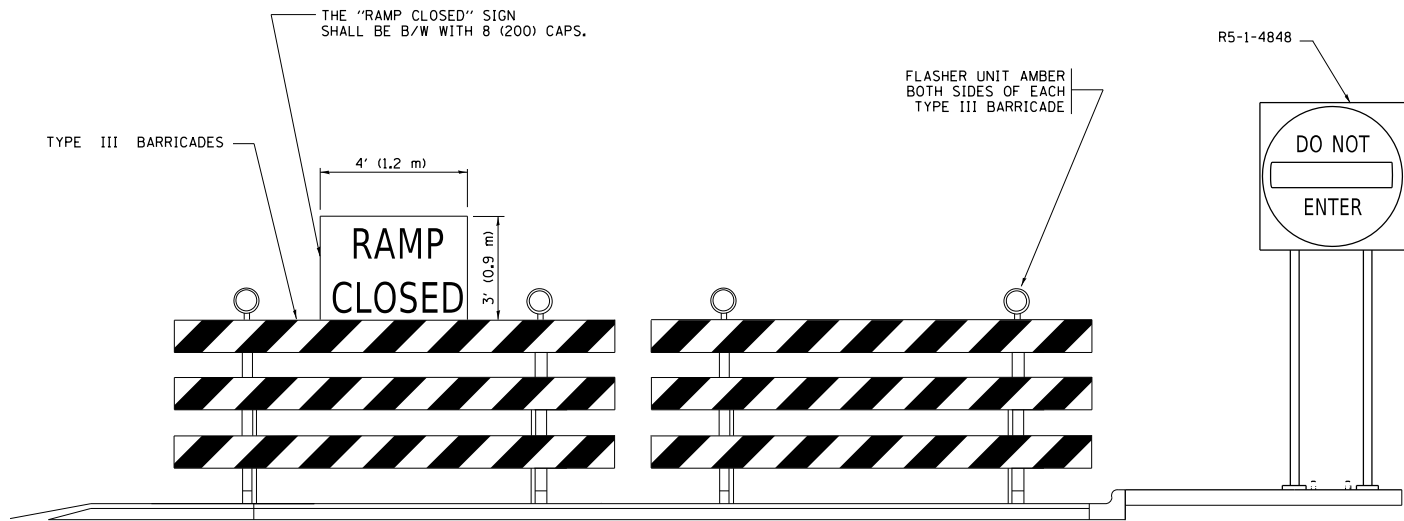
DISTANCES MAY BE SHORTENED DEPENDING UPON THE PROXIMITY OF ADJACENT RAMPS OR INTERSECTIONS.



EXIT RAMP CLOSURE

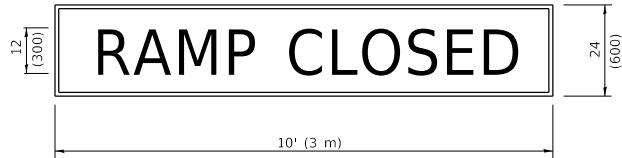
SYMBOLS

- TYPE II BARRICADE OR DRUM
- TYPE III BARRICADE WITH 2 FLASHING LIGHTS



DETAIL FOR REQUIRED BARRICADES & SIGNS

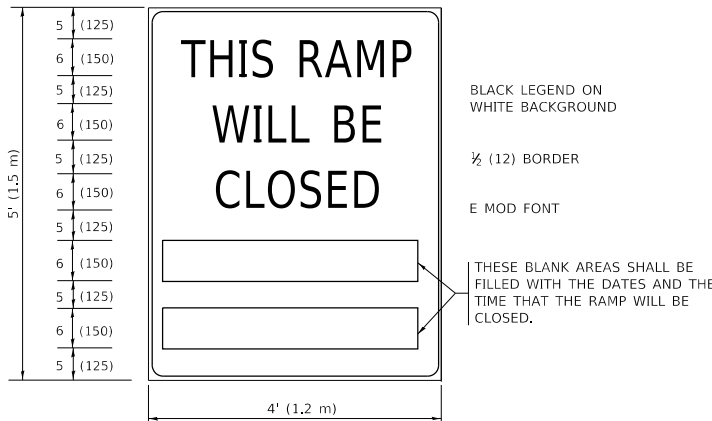
RAMP CLOSURE ADVANCE WARNING SIGN



BLACK LEGEND ON ORANGE
BACKGROUND MOUNTED
DIAGONALLY
E MOD FONT
1 (25) BORDER

THESE SIGNS ARE REQUIRED ON ALL THE EXIT
GUIDE SIGNS FOR EXIT RAMPS THAT WILL BE
CLOSED FOR MORE THAN FOUR (4) CONSECUTIVE DAYS.

RAMP CLOSURE ADVANCE INFORMATION SIGN



BLACK LEGEND ON
WHITE BACKGROUND

½ (12) BORDER

E MOD FONT

THESE BLANK AREAS SHALL BE
FILLED WITH THE DATES AND THE
TIME THAT THE RAMP WILL BE
CLOSED.

THESE SIGNS ARE REQUIRED ON BOTH SIDES OF THE RAMP, MINIMUM OF 1 WEEK IN ADVANCE OF THE CLOSURE.

THESE SIGNS SHALL BE FABRICATED AND PAID FOR ACCORDING TO THE TEMPORARY INFORMATION SIGNING SPECIAL PROVISION

GENERAL NOTES:

- CONES MAY BE SUBSTITUTED FOR DRUMS OR TYPE II BARRICADES DURING DAY OPERATIONS. CONES SHALL BE A MINIMUM OF 28 (700) HIGH.
- VERTICAL BARRICADES SHALL NOT BE USED FOR RAMP CLOSURES.
- A FLAGGER SHALL BE POSITIONED AT EACH CLOSED RAMP THAT IS OPEN TO CONSTRUCTION VEHICLES, PRECEDED BY A W20-7 FLAGGER WARNING SIGN.
- ALL ROUTE MARKERS AND TRAILBLAZER ASSEMBLIES WHICH DIRECT MOTORISTS TO A CLOSED ENTRANCE RAMP SHALL BE COVERED WHEN THE RAMP IS CLOSED FOR MORE THAN FOUR (4) DAYS.
- THE SIGNING AND BARRICADING WHICH IS REQUIRED BY THIS DETAIL SHALL BE INCLUDED IN THE COST OF TRAFFIC CONTROL AND PROTECTION (EXPRESSWAYS).
- AUTHORIZATION FROM THE DISTRICT'S BUREAU OF TRAFFIC IS REQUIRED FOR ALL RAMP CLOSURES.
- THE RAMP CLOSURE ADVANCE INFORMATION SIGNS SHALL BE ERECTED IF THE CLOSURE TIME EXCEEDS TWENTY-FOUR (24) HOURS. ADDITIONAL ADVANCE WARNING SIGNS ON EXIT GUIDE SIGNING WILL BE REQUIRED FOR EXIT RAMP CLOSURES THAT EXCEED FOUR (4) DAYS IN LENGTH.
- ROAD CONSTRUCTION AHEAD SIGNS MAY BE OMITTED WHEN THIS DETAIL IS USED IN CONJUNCTION WITH OTHER TRAFFIC CONTROL THAT ALREADY INCLUDES A ROAD CONSTRUCTION AHEAD SIGN.
- ARTERIAL ROAD CONSTRUCTION AHEAD SIGNS SHALL BE INSTALLED ON THE LEFT SIDE OF TRAFFIC IF THE MEDIAN IS MORE THAN 10 FT WIDE.

ALL DIMENSIONS ARE IN INCHES (MILLIMETERS)
UNLESS OTHERWISE SHOWN.

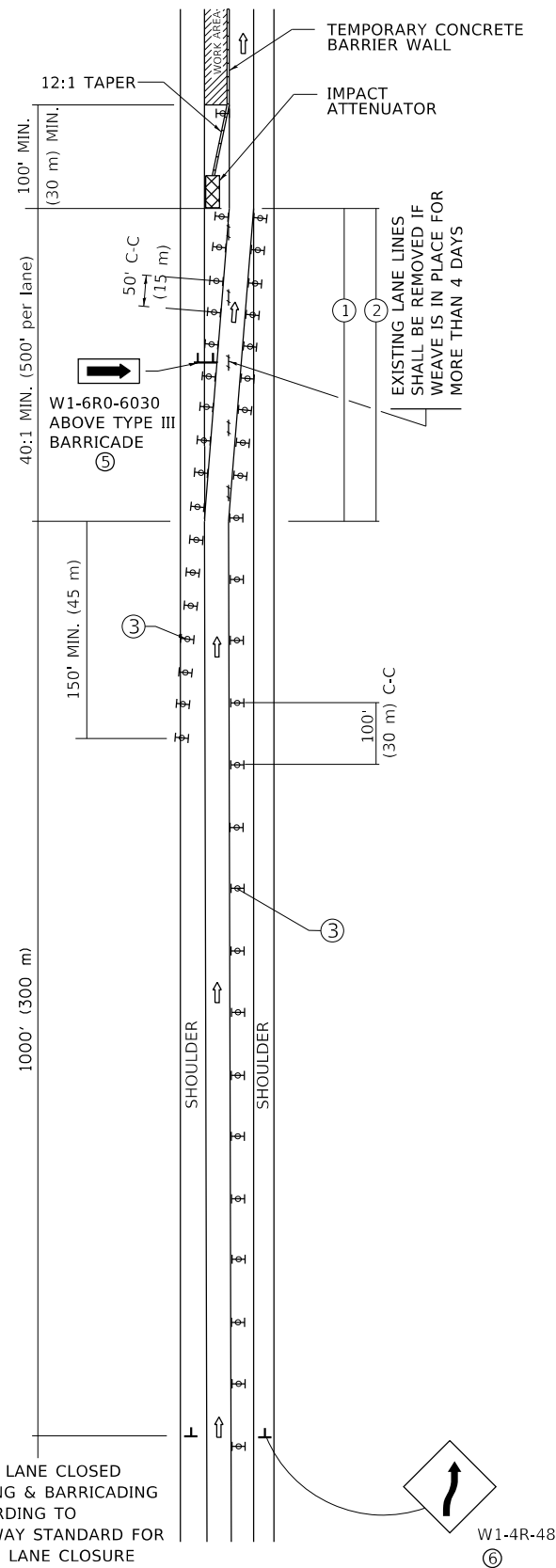
STATE OF ILLINOIS
DEPARTMENT OF TRANSPORTATION

ENTRANCE_AND_EXIT_RAMP
CLOSURE_DETAILS

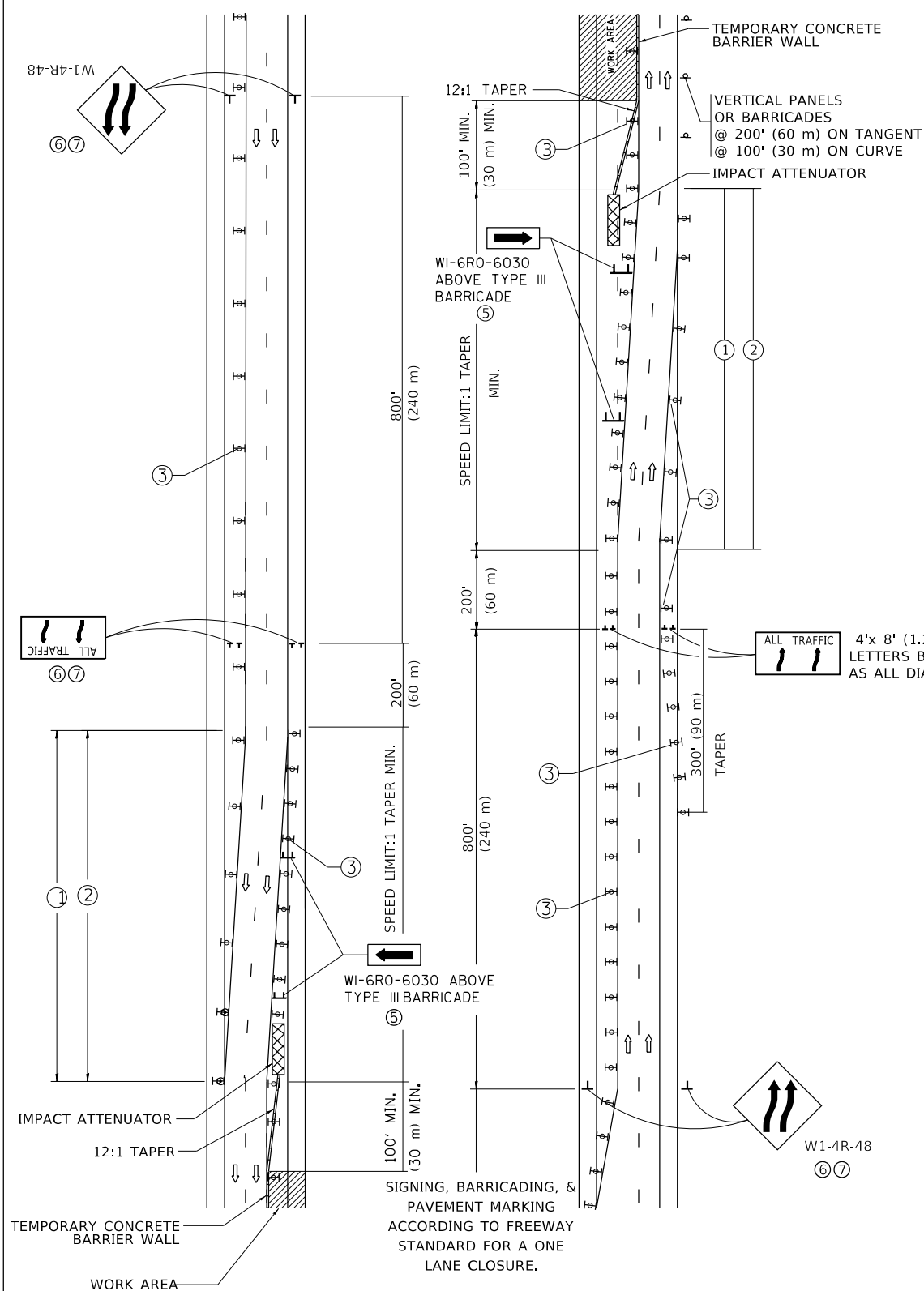
SCALE: NONE SHEET 1 OF 1 SHEETS STA. TO STA.

F.A. RTE.	SECTION	COUNTY	TOTAL SHEETS	SHEET NO.
VAR.	2020-229-BP	COOK	18	14
TC-08		CONTRACT NO. 62M90		
		ILLINOIS	FED. AID PROJECT	

SINGLE LANE WEAVE









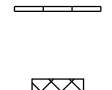
MULTI-LANE WEAVE



- GENERAL NOTES:

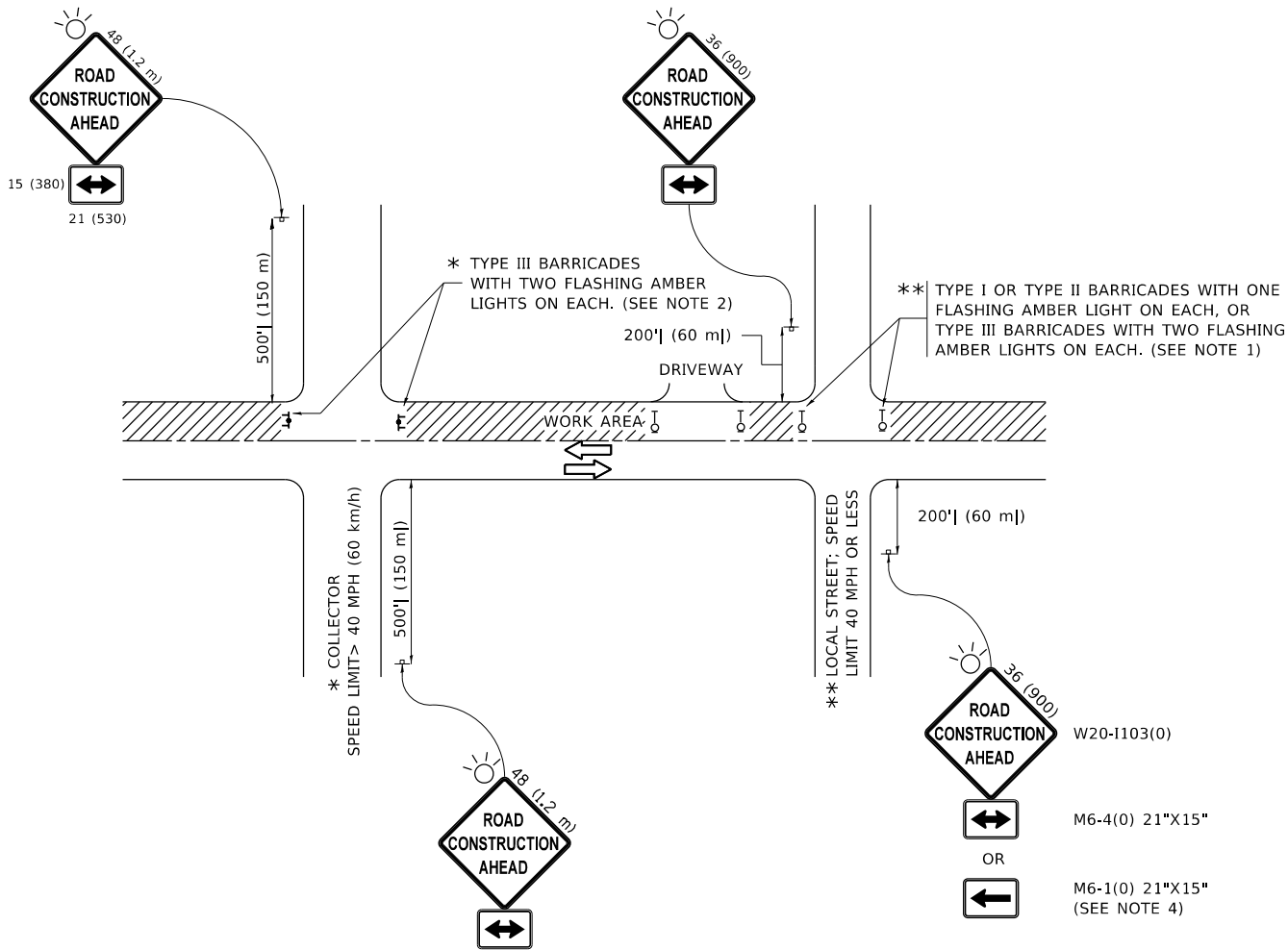
- ① EXISTING CONFLICTING PAVEMENT MARKING LINES SHALL BE REMOVED. PAVEMENT MARKING REMOVAL SHALL NOT BE REQUIRED FOR SINGLE LANE WEAVES UNDER 4 DAYS IN DURATION.
- ② CONTINUOUS REFLECTIVE TEMPORARY PAVEMENT MARKING TAPE SHALL BE PLACED THROUGHOUT THE TAPER AND FOR 300' (90 m) ALONG SIDE THE WORK AREA WHERE THE CLOSURE TIME IS GREATER THAN FOURTEEN DAYS. THE LEFT EDGE LINE SHALL BE YELLOW AND THE RIGHT EDGE LINE SHALL BE WHITE. FOR MULTI-LANE WEAVES LANE LINES SHALL BE 5 INCH, 10'-30' (3 m-9 m) SKIP DASH, WHITE.
- ③ PLASTIC DRUMS WITH STEADY BURN LIGHTS AT 50' (15 m) C-C SPACING IN TAPERS AND 100' (30 m) C-C SPACING IN TANGENTS.
- ④ ALL SIGNS SHALL BE POST MOUNTED IF THE CLOSURE TIME EXCEEDS FOUR DAYS.
- ⑤ TYPE III BARRICADES MAY BE OMITTED FOR SINGLE-LANE WEAVES UNDER 24-HOURS IN DURATION. W1-6 SIGNS WILL STILL BE REQUIRED. IF THE WIDTH OF OFFSET IS LESS THAN 6' THEN THE TYPE III BARRICADE WITH ATTACHED ARROW SIGN PANEL CAN BE ELIMINATED IN THE TAPER AREAS.
- ⑥ WHEN THE LENGTH OF THE SHIFTED SEGMENT (DISTANCE BETWEEN WEAVE POINTS) IS LESS THAN 1500', DOUBLE REVERSE CURVE SIGNS (W24-1) SHOULD BE USED INSTEAD OF THE REVERSE CURVE (W1-4) SIGNS. ARROWS ON THE 4'X8' "ALL TRAFFIC" SIGNS SHALL BE THE SAME SHAPE.
- ⑦ THE NUMBER OF ARROWS ON THESE SIGNS SHALL MATCH THE NUMBER OF LANES OPEN TO TRAFFIC.

SYMBOLS

- | | |
|---|--|
|  | DIRECTION OF TRAFFIC |
|  | WORK AREA |
|  | SIGN ON PORTABLE OR PERMANENT SUPPORT |
|  | TYPE II BARRICADE OR DRUM WITH MONO-DIRECTIONAL STEADY BURNING LIGHT |
|  | TEMPORARY CONCRETE BARRIER WALL |
|  | IMPACT ATTENUATOR |
|  | |
- W24-1-48
- ⑦

ALL DIMENSIONS ARE IN INCHES (MILLIMETERS)
UNLESS OTHERWISE SHOWN

MODEL Default
FILE Name: p:\publansroom\dat\illinois\gov\p\WIDOT\Documents\DOT Office\DI\drctct_1\Projects\01226\B\CADDData\Design\Dis54.dgn



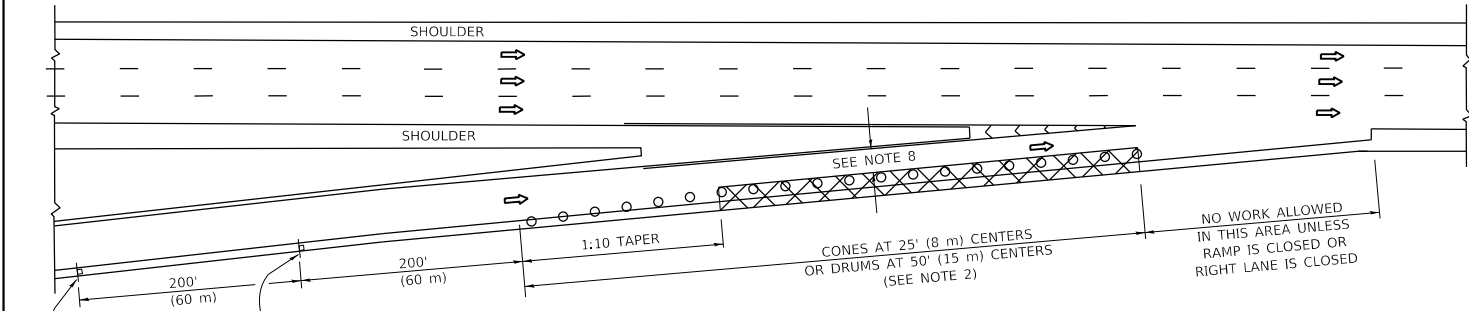
NOTES:

- SIDE ROAD WITH A SPEED LIMIT OF 40 MPH (60 km/h) OR LESS AS SHOWN ON THE DRAWING AND AS DIRECTED BY THE ENGINEER:
 - ONE "ROAD CONSTRUCTION AHEAD" SIGN 36 x 36 (900x900) WITH A FLASHER MOUNTED ON IT APPROXIMATELY 200' (60 m) IN ADVANCE OF THE MAIN ROUTE.
 - THE CLOSED PORTION OF THE MAIN ROUTE SHALL BE PROTECTED BY BLOCKING WITH TYPE I, TYPE II OR TYPE III BARRICADES, 1/3 OF THE CROSS SECTION OF THE CLOSED PORTION.
- SIDE ROAD WITH A SPEED LIMIT GREATER THAN 40 MPH (60 km/h) AS SHOWN ON THE DRAWING AND AS DIRECTED BY THE ENGINEER:
 - ONE "ROAD CONSTRUCTION AHEAD" SIGN 48 x 48 (1.2 m x 1.2 m) WITH A FLASHER MOUNTED ON IT APPROXIMATELY 500' (150 m) IN ADVANCE OF THE MAIN ROUTE.
 - THE CLOSED PORTION OF THE MAIN ROUTE SHALL BE PROTECTED BY BLOCKING WITH TYPE III BARRICADES, 1/2 OF THE CROSS SECTION OF THE CLOSED PORTION.
- CONES MAY BE SUBSTITUTED FOR BARRICADES OR DRUMS AT HALF THE SPACING DURING DAY OPERATIONS. CONES SHALL BE A MINIMUM OF 28 (710) IN HEIGHT.
- WHEN THE SIDE ROAD LIES BETWEEN THE BEGINNING OF THE MAINLINE SIGNING AND THE WORK ZONE, A SINGLE HEADED ARROW (M6-1) SHALL BE USED IN LIEU OF THE DOUBLE HEADED ARROW (M6-4).
- WHEN WORK IS BEING PERFORMED ON A SIDE ROAD OR DRIVEWAY, FOLLOW THE APPLICABLE STANDARD(S). THE DIRECTIONAL ARROW (M6-1 OR M6-4) SHALL BE COVERED OR REMOVED WHEN NO LONGER CONSISTENT WITH THE TRAFFIC CONTROL SET-UP.
- ADVANCE WARNING SIGNS ARE TO BE OMITTED ON DRIVEWAYS UNLESS OTHERWISE SPECIFIED IN THE PLANS OR BY THE ENGINEER.
- THE TRAFFIC CONTROL AND PROTECTION FOR SIDE ROADS, INTERSECTIONS, AND DRIVEWAYS SHALL BE INCLUDED IN THE COST OF SPECIFIED TRAFFIC CONTROL STANDARDS OR ITEMS.

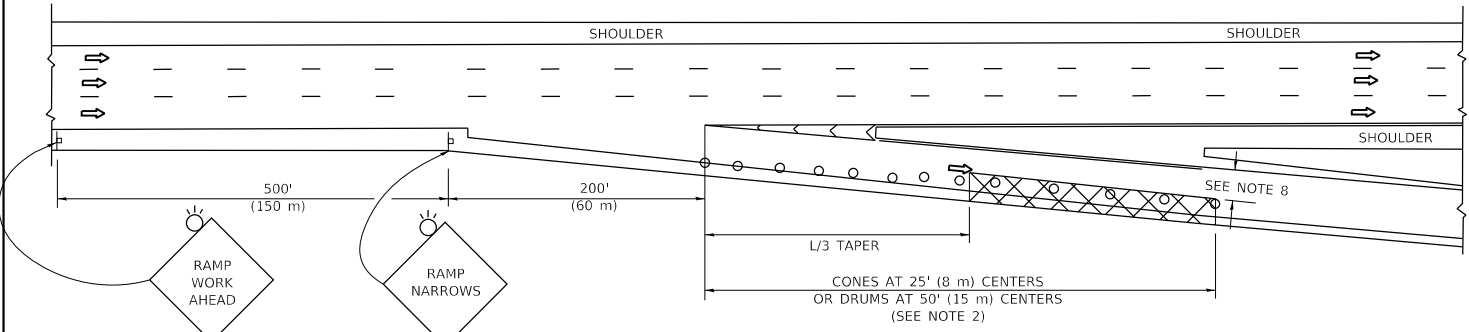
All dimensions are in inches (millimeters)
unless otherwise shown.

	USER NAME = diaza	DESIGNED - L.H.A.	REVISED - A. HOUSEH 10-15-96	STATE OF ILLINOIS DEPARTMENT OF TRANSPORTATION	TRAFFIC CONTROL AND PROTECTION FOR SIDE ROADS, INTERSECTIONS, AND DRIVEWAYS	SCALE: NONE	SHEET 1 OF 1 SHEETS	STA. TO STA.	F.A. RTE.	SECTION	COUNTY	TOTAL SHEETS	SHEET NO.
		DRAWN -	REVISED - T. RAMMACHER 01-06-00						VAR.	2020-229-BP	COOK	18	16
	PLOT SCALE = 100,0000 ' / in.	CHECKED -	REVISED - A. SCHUETZE 07-01-13						TC-10		CONTRACT NO. 62M90		
	PLOT DATE = 10/9/2020	DATE - 06-89	REVISED - A. SCHUETZE 09-15-16						ILLINOIS FED. AID PROJECT				

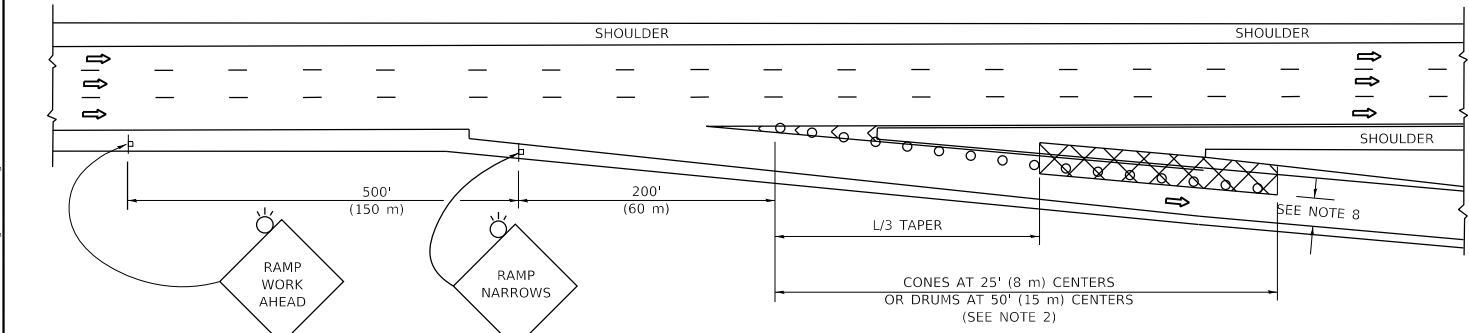
PARTIAL RAMP CLOSURE DETAILS



TYPICAL ENTRANCE RAMP



TYPICAL EXIT RAMP



TYPICAL EXIT RAMP

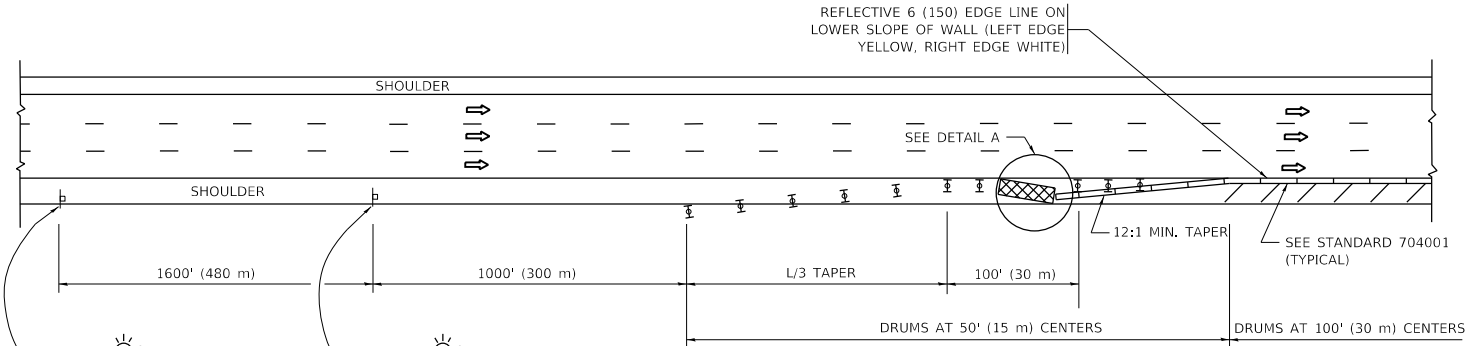
SYMBOLS

- ACTIVE WORK AREA
- SIGN ON PORTABLE OR PERMANENT SUPPORT
- FLAGGER WITH CONTROL SIGN
- TYPE II BARRICADE OR DRUM
- CONE, DRUM OR BARRICADE
- IMPACT ATTENUATOR OF TYPE AND TEST LEVEL SPECIFIED

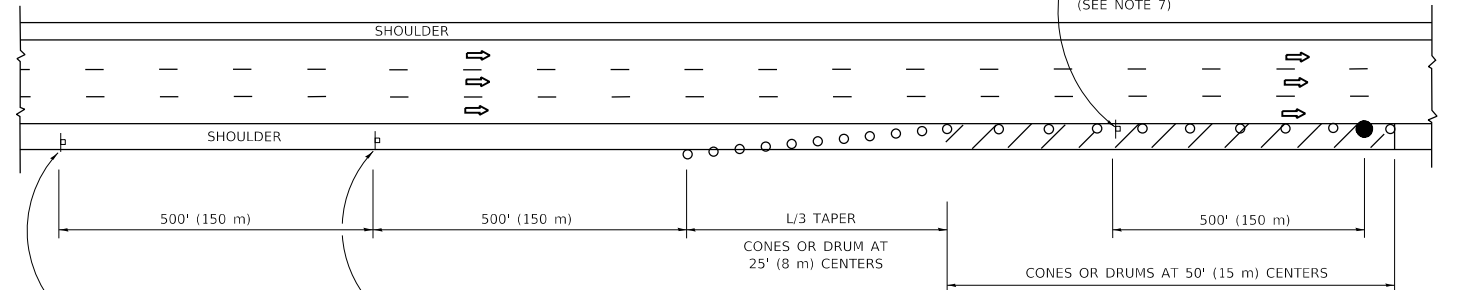
GENERAL NOTES:

- THE "L" DISTANCE EQUALS:
SPEED LIMIT FORMULAS
45 mph (80 km/h) METRIC ENGLISH
OR GREATER: $L = 0.65(W)(S)$ $L = (W)(S)$
W = WIDTH OF OFFSET IN FEET (METERS)
S = NORMAL POSTED SPEED MPH (KM/H)
- TYPE II BARRICADES OR DRUMS ARE REQUIRED FOR ALL NIGHTTIME CLOSURES. TYPE II BARRICADES OR DRUMS WITH MONODIRECTIONAL STEADY BURN LIGHTS ARE REQUIRED FOR DELINEATING OBSTACLES, EXCAVATIONS, OR HAZARDS EXCEEDING 100 FT (30m) IN LENGTH AT NIGHT.
- ALL SIGNS SHALL BE POST MOUNTED IF THE CLOSURE TIME EXCEEDS FOUR DAYS.
- FLASHING LIGHTS SHALL BE USED DURING THE HOURS OF DARKNESS AND SHALL BE INSTALLED ABOVE THE FIRST TWO SETS OF SIGNS.

SHOULDER CLOSURE DETAILS



PERMANENT SHOULDER CLOSURE



DAYTIME SHOULDER CLOSURE

DETAIL "A"
IMPACT ATTENUATOR, TEMPORARY
(SEE NOTE 5)

ALL DIMENSIONS ARE IN INCHES (MILLIMETERS) UNLESS OTHERWISE SHOWN.

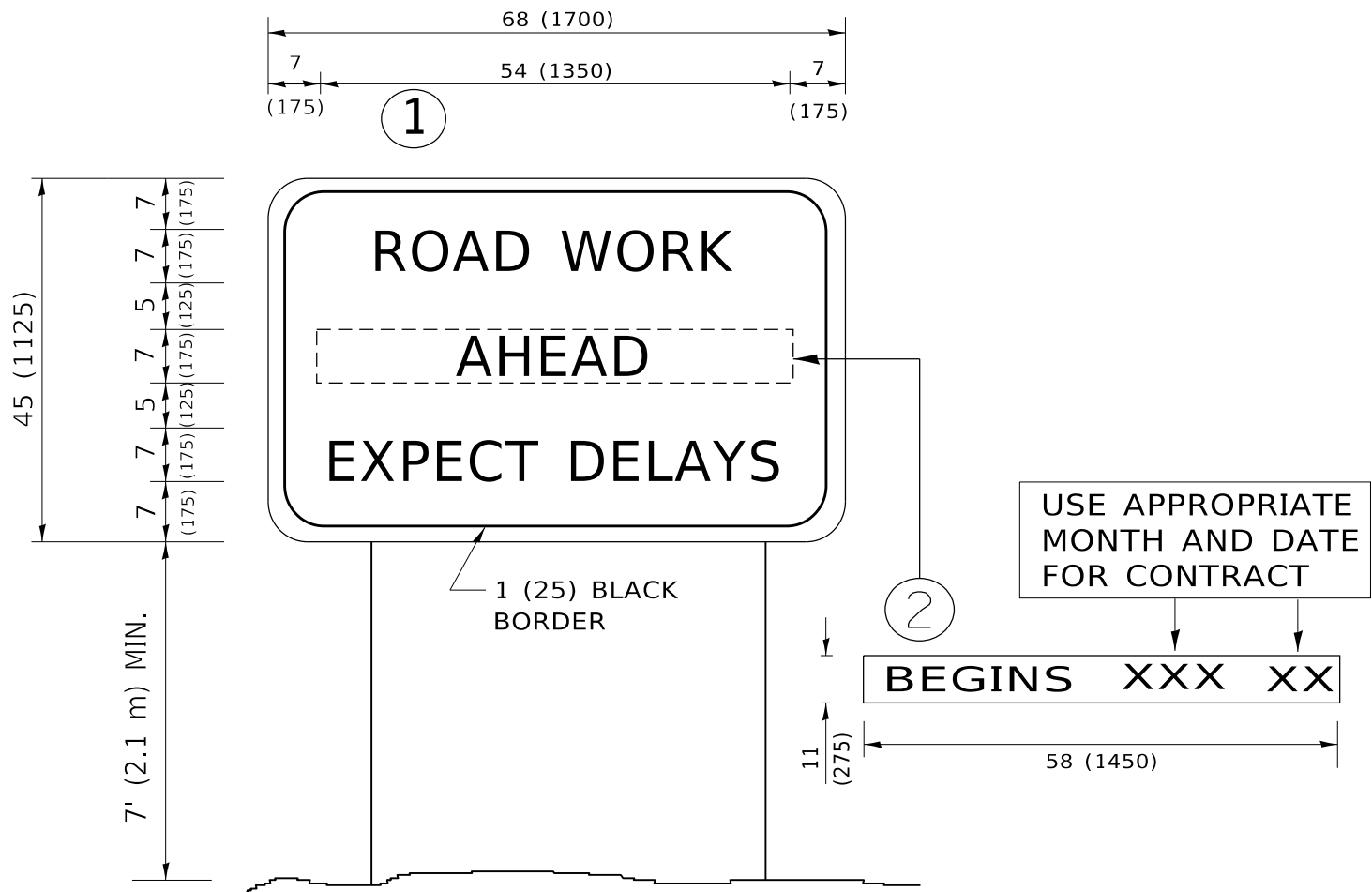
STATE OF ILLINOIS
DEPARTMENT OF TRANSPORTATION

TRAFFIC CONTROL DETAILS FOR FREEWAY
SHOULDER CLOSURES AND PARTIAL RAMP CLOSURES

F.A. RTE.	SECTION	COUNTY	TOTAL SHEETS	SHEET NO.
VAR.	2020-229-BP	COOK	18	17
TC-17		CONTRACT NO. 62M90		
		ILLINOIS FED. AID PROJECT		

SCALE: NONE SHEET 1 OF 1 SHEETS STA. TO STA.

MODEL Default
FILE Name: p:\publanroom\dot\illinois\gov\p\WIDOT\Documents\DOT Office\District 1\Projects\012261\0\CoDData\Design\Dis54.dgn



NOTES:

1. USE BLACK LETTERING ON ORANGE BACKGROUND.
2. ERECT SIGNS IN ADVANCE OF THE LOCATION FOR THE "ROAD CONSTRUCTION AHEAD" SIGN AT LOCATIONS AS DIRECTED BY THE ENGINEER.
3. ERECT SIGN①WITH INSTALLED PANEL②ONE WEEK PRIOR TO THE START OF CONSTRUCTION.
4. REMOVE PANEL②SOON AFTER THE START OF CONSTRUCTION.
5. SEE SPECIAL PROVISION FOR "TEMPORARY INFORMATION SIGNING" FOR ADDITIONAL INFORMATION.
6. ONE SIGN ASSEMBLY EQUALS 25.70 SQ. FT. (2.3 SQ. M.)
7. SHALL BE PAID FOR AS TEMPORARY INFORMATION SIGNING.

ALL DIMENSIONS ARE IN INCHES (MILLIMETERS)
UNLESS OTHERWISE SHOWN.

	USER NAME = diaza	DESIGNED -	REVISED - R. MIRS 09-15-97	STATE OF ILLINOIS DEPARTMENT OF TRANSPORTATION	ARTERIAL ROAD INFORMATION SIGN				F.A. RTE.	SECTION	COUNTY	TOTAL SHEETS	SHEET NO.
		DRAWN -	REVISED - R. MIRS 12-11-97						VAR.	2020-229-BP	COOK	18	18
	PLOT SCALE = 100.0000 ' / in.	CHECKED -	REVISED -T. RAMMACHER 02-02-99						TC-22		CONTRACT NO. 62M90		
	PLOT DATE = 10/9/2020	DATE -	REVISED - C. JUCIUS 01-31-07						ILLINOIS FED. AID PROJECT				
					SCALE: NONE	SHEET 1	OF 1 SHEETS	STA.	TO STA.				