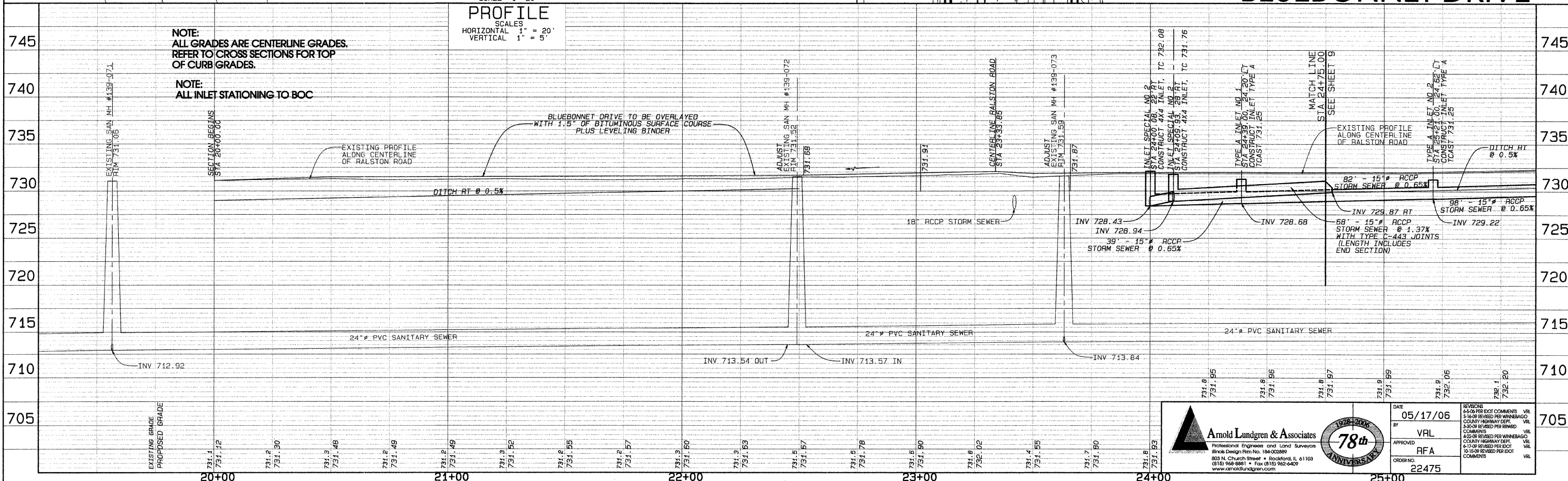
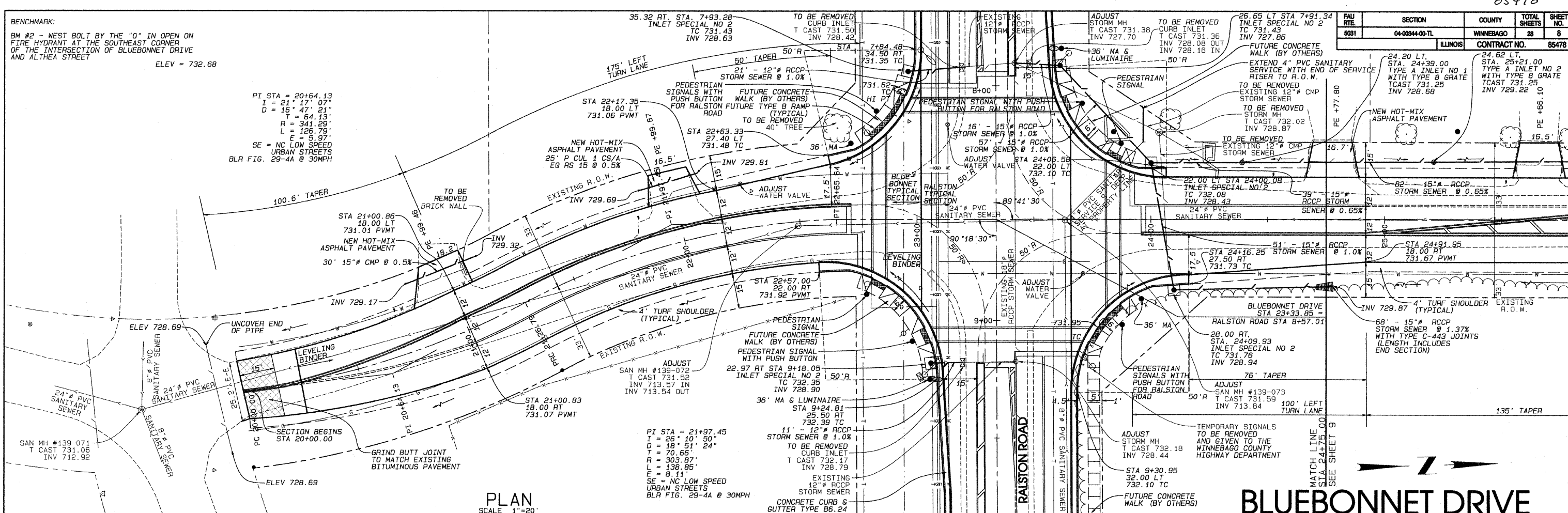


BENCHMARK:
 BM #2 - WEST BOLT BY THE "O" IN OPEN ON
 FIRE HYDRANT AT THE SOUTHEAST CORNER
 OF THE INTERSECTION OF BLUEBONNET DRIVE
 AND ALTHEA STREET
 ELEV = 732.68

PI STA = 20+64.13
 L = 21' 17' 07"
 D = 16' 47' 21"
 T = 64.13'
 R = 341.29'
 L = 126.79'
 E = 5.97'
 SE = NC LOW SPEED
 URBAN STREETS
 BLR FIG. 29-4A @ 30MPH

FAU RTE	SECTION	COUNTY	TOTAL SHEETS	SHEET NO.
5081	04-00844-00-TL	WINNEBAGO	28	8

ILLINOIS CONTRACT NO. 85478



Arnold Lundgren & Associates
 Professional Engineers and Land Surveyors
 Illinois Design Firm No. 184-002889
 803 N. Church Street • Rockford, IL 61103
 (815) 968-8881 • Fax (815) 962-4429
 www.arnoldlundgren.com

78th ANIVERSARY

DATE: 05/17/06
 BY: VRL
 APPROVED: RFA
 ORDER NO.: 22475

REVISIONS:
 1-16-06 PER DOT COMMENTS VRL
 3-16-06 REVISED PER WINNEBAGO VRL
 COUNTY HIGHWAY DEPT VRL
 3-30-06 REVISED PER WINNEBAGO VRL
 COUNTY HIGHWAY DEPT VRL
 4-22-06 REVISED PER WINNEBAGO VRL
 COUNTY HIGHWAY DEPT VRL
 4-17-06 REVISED PER DOT VRL
 10-15-06 REVISED PER DOT VRL
 COMMENTS VRL