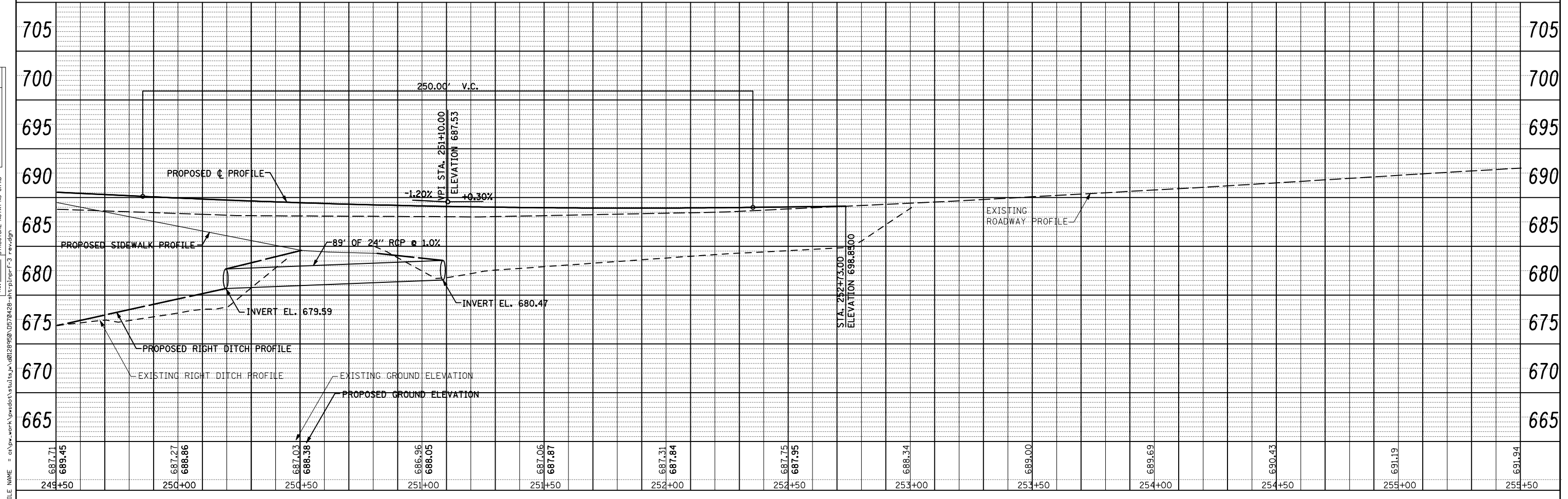
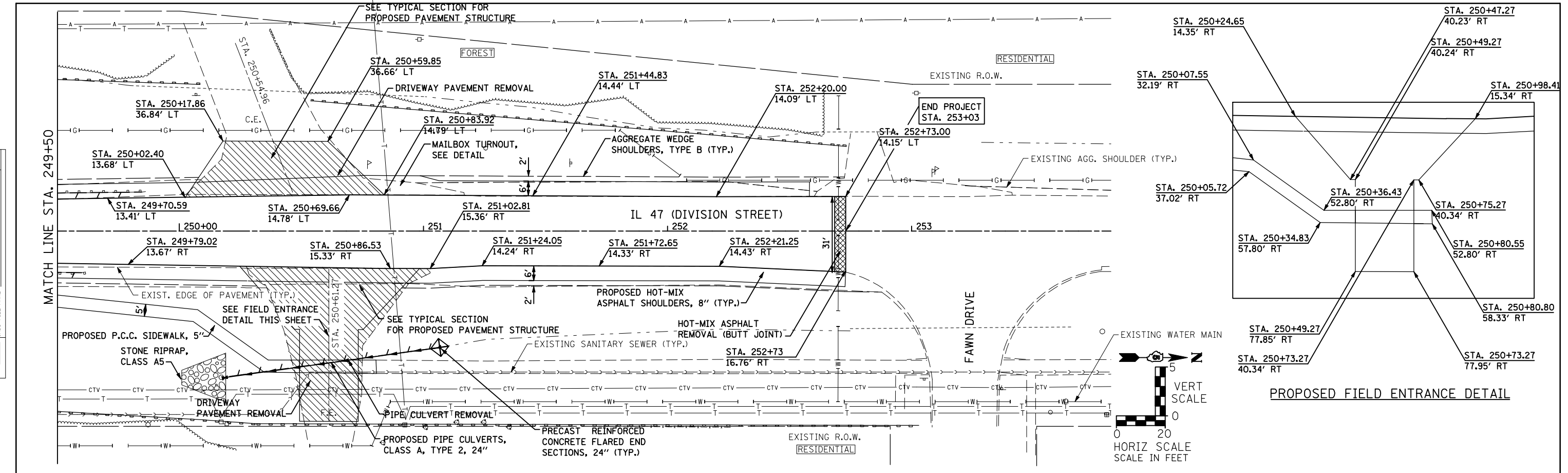


PLAN	SURVEYED	DATE
	PLOTTED	
	CHECKED	
	BY	
	NO.	
	FILE NAME	

PROFILE	SURVEYED	DATE
	PLOTTED	
	CHECKED	
	BY	
	NO.	
	FILE NAME	



1170 SOUTH HOUBOLT ROAD JOLIET, ILLINOIS 60431 (815) 744-4200	USER NAME = stults,jw DESIGNED - CHECKED - DRAWN - CHECKED -	REVISED - REVISED - REVISED - REVISED -	STATE OF ILLINOIS DEPARTMENT OF TRANSPORTATION	EXISTING AND PROPOSED PLAN AND PROFILE		F.A.P. RTE. 326	SECTION (137BR)BR	COUNTY CHAMPAIGN	TOTAL SHEETS 75	SHEET NO. 14
	PLOT SCALE = 40.3933' / IN. PLOT DATE = 10/23/2009	SCALE: AS SHOWN		SHEET NO. OF SHEETS	STA. 249+00 TO STA. 255+00	FED. ROAD DIST. NO. [ILLINOIS] FED. AID PROJECT	CONTRACT NO. 70428			