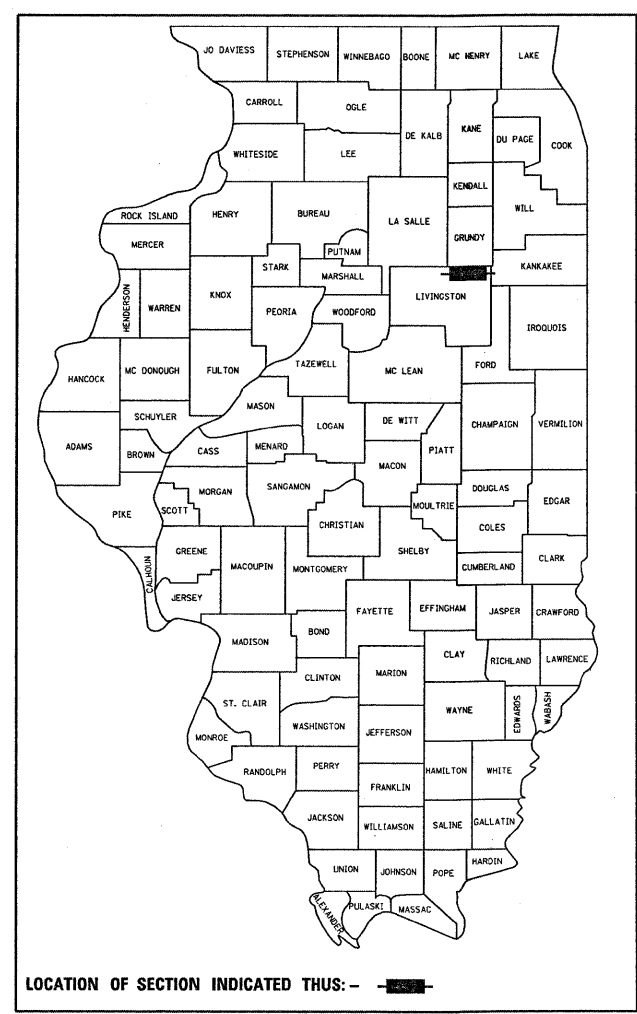


F.A.P. RTE.	SECTION	COUNTY	TOTAL SHEETS	SHEET NO.
41	15 BR-2	LIVINGSTON	64	1
ILLINOIS			CONTRACT NO. 66691	

STATE OF ILLINOIS
DEPARTMENT OF TRANSPORTATION
DIVISION OF HIGHWAYS
**PROPOSED
HIGHWAY PLANS**

P-93-012-07
D-93-012-07



LOCATION OF SECTION INDICATED THUS: - ■ -

INDEX OF SHEETS

- 1 COVER SHEET
- 2 GENERAL NOTES
- 3-4 SUMMARY OF QUANTITIES
- 5 TYPICAL SECTIONS
- 6-8 SCHEDULES
- 9 TIES
- 10-13 PLAN AND PROFILES SHEETS
- 14-16 TRAFFIC CONTROL SHEETS
- 17-50 STRUCTURAL SHEETS
- 51-53 EXISTING BRIDGE PLANS
- 54-58 DETAILS
- 59-64 CROSS SECTIONS

STANDARDS

- 000001-05 STANDARD SYMBOLS, ABBREVIATIONS AND PATTERNS
- 280001-05 TEMPORARY EROSION CONTROL SYSTEMS
- 420401-08 BRIDGE APPROACH PAVEMENT CONNECTOR
- 515001-03 NAME PLATE FOR BRIDGES
- 542401-01 METAL END SECTION FOR PIPE CULVERTS
- 601101-01 CONCRETE HEADWALL FOR PIPE DRAINS
- 602301-02 INLET, TYPE A
- 602401-02 MANHOLE, TYPE A
- 602601-02 PRECAST REINFORCED CONCRETE FLAT SLAB TOP
- 602701-02 MANHOLE STEPS
- 604001-03 FRAME AND LIDS, TYPE 1
- 604036-02 GRATE, TYPE 8
- 630001-08 STEEL PLATE BEAM GUARDRAIL
- 630201-06 PCC/HMA STABILIZATION AT STEEL PLATE BEAM GUARDRAIL
- 630301-05 SHOULDER WIDENING FOR TYPE 1(SPECIAL) GUARDRAIL TERMINALS
- 631031-08 TRAFFIC BARRIER TERMINAL, TYPE 6
- 635006-03 REFLECTOR AND TERMINAL MARKER PLACEMENT
- 635011-02 REFLECTOR MARKER AND MOUNTING DETAILS
- 701001-02 OFF-ROAD OPERATIONS 2L, 2W, MORE THAN 15' (4.5 m) AWAY
- 701006-03 OFF-ROAD OPERATIONS 2L, 2W, 15' (4.5 m) TO 24" (600 mm) FROM PAVEMENT EDGE
- 701301-03 LANE CLOSURE, 2L, 2W, SHORT TIME OPERATIONS
- 701306-02 LANE CLOSURE, 2L, 2W, SLOW MOVING OPERATIONS DAY ONLY, FOR SPEEDS ≥ 45 MPH
- 701311-03 LANE CLOSURE, 2L, 2W, MOVING OPERATIONS - DAY ONLY
- 701321-10 LANE CLOSURE, 2L, 2W, BRIDGE REPAIR WITH BARRIER
- 701326-03 LANE CLOSURE, 2L, 2W, PAVEMENT WIDENING, FOR SPEEDS ≥ 45 MPH
- 701901-01 TRAFFIC CONTROL DEVICES
- 704001-06 TEMPORARY CONCRETE BARRIER
- 781001-03 TYPICAL APPLICATIONS RAISED REFLECTIVE PAVEMENT MARKERS

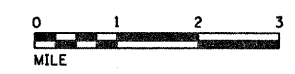
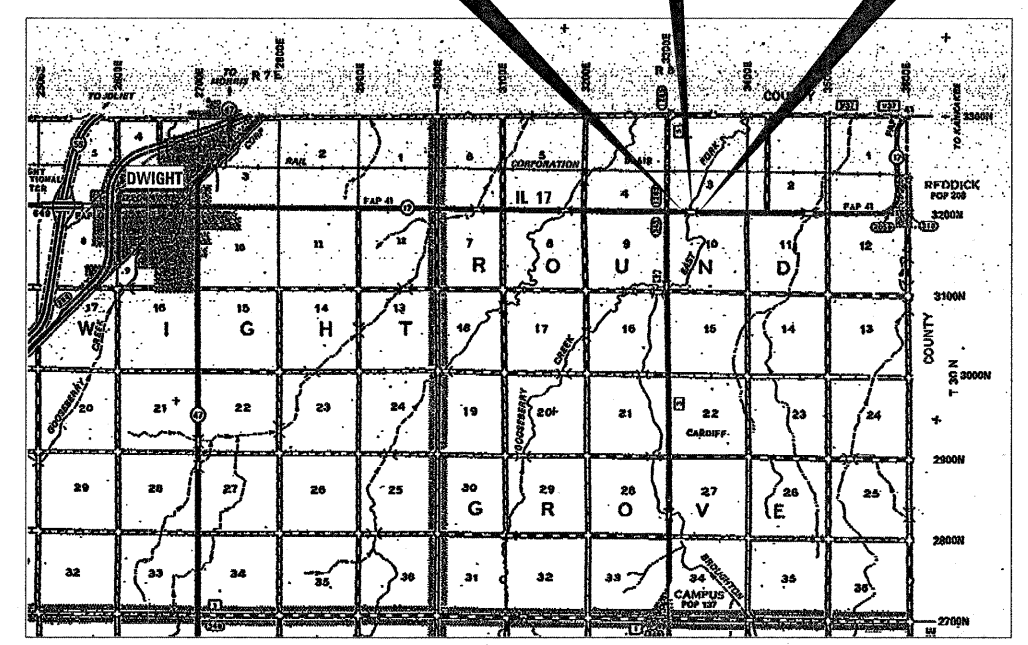
**FAP ROUTE 41 (IL 17)
SECTION 15 BR-2
PROJECT ACBHF-0041(133)
SUPERSTRUCTURE REPLACEMENT
LIVINGSTON COUNTY**

C-93-012-07

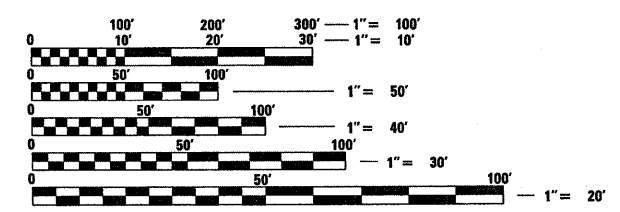
**BRIDGE SUPERSTRUCTURE
REPLACEMENT
STA. 323 + 21.04
S.N. 053-0150 EX. & PR.**

EXISTING S.N. 053-0150 CROSSES THE EAST FORK OF THE MAZON RIVER AT A LENGTH OF 181'-7". THE EXISTING SUPERSTRUCTURE WILL BE REMOVED AND REPLACED, AND EXISTING ABUTMENTS WILL BE CONVERTED TO SEMI-INTEGRAL ABUTMENTS.

**BEGIN IMPROVEMENT
STA. 317 + 05** **END IMPROVEMENT
STA. 329 + 23**



GROSS & NET LENGTH = 1218 FT. = .231 MILE



FULL SIZE PLANS HAVE BEEN PREPARED USING STANDARD ENGINEERING SCALES. REDUCED SIZED PLANS WILL NOT CONFORM TO STANDARD SCALES. IN MAKING MEASUREMENTS ON REDUCED PLANS, THE ABOVE SCALES MAY BE USED.

J.U.L.I.E.
JOINT UTILITY LOCATION INFORMATION FOR EXCAVATION
1-800-892-0123
OR 811

**DISTRICT 3 NO. (815) 434-6131
PROJECT ENGINEER: CRAIG REED
UNIT CHIEF: R SCHWANKE
TOWNSHIP: DWIGHT
CONTRACT NO. 66691**

**FUNCTIONAL CLASSIFICATION
RURAL MINOR ARTERIAL
2009 ADT = 2550
P.V. = 69.6% S.U. = 6.9% M.U. = 23.5%**

STATE OF ILLINOIS
DEPARTMENT OF TRANSPORTATION
DIVISION OF HIGHWAYS

SUBMITTED _____ 20 _____

George Ryan
DEPUTY DIRECTOR OF HIGHWAYS, REGION ENGINEER
December 4, 2009

Charles J. Ingersoll
ENGINEER OF DESIGN AND ENVIRONMENT
December 4, 2009

Christine M. Reed
DIRECTOR OF HIGHWAYS, CHIEF ENGINEER

**PRINTED BY THE AUTHORITY
OF THE STATE OF ILLINOIS**